

SC Commercial Galleries

continued from Page 61

appt. only. Contact: 864/517-4023 or at (www.littlehouseartstudios.com).

Ilyn strong, 119 North Main Street, Greenville. **Ongoing** - featuring the works of over 60 national custom jewelry designers and glass blowers. Hours: Mon.-Sat., 10am - 5:30pm. Contact: 864/233-5900 or at (www.ilynstrong.com).

Mary Praytor Gallery, 26 So. Main Street, Greenville. **Ongoing** - Exhibit of gallery artists include; Scott Belville, Judy Jones, Kent Ambler, Stephen Dell, Spela Brencic, Jack Burgess, Margaret Dyer, Ashley Norwood Cooper, Jonathan Fenske, Dobee Snowber, Jim Heiser, Mary Walker, Ken Page, Mark Mulfinger, and Mark Anderson. Hours: Tue.-Sat., 9am-5pm; Thur. & Fri. evenings & Sun. afternoons by appt. Contact: 864/235-1800.

Midtown Artery, 718-A S. Main St., West End, just one block below the Army/Navy Store and one block above The American Grocery Restaurant, Greenville. **Ongoing** - Featuring contemporary paintings by world renowned Andre Desjardins, Fidel Garcia and Anita Lewis. Also featuring original works by international artists Hengki Pudjianto, Eugenia Mangra, Yogendra Sethi and Victoria Stewart. Bronze sculpture by South Vietnamese artist Tuan and glass sculpture by Barry Entner can also be seen. Hours: Wed.-Sat., 11am-7pm, Sun., noon-5pm. Contact: 864/232-0018 or at (www.midtownartery.com).

Olde Towne Galleries, 1300 Laurens Road, Greenville. **Ongoing** - A fine art gallery featuring works by local, regional and international artists, including watercolor landscapes and florals by Judy Sahm, Celtic landscapes by Donna Nyzio, pottery by Veronica Inman, photography and hand-woven linens and garments by Gail Gray and Russian Gzhel ceramics and handpainted boxes. Hours: Tue.-Sat., 10am-5pm. Contact: 864/235-5592.

Ric Standridge Gallery, 1021 S. Main St., Greenville. **Ongoing** - We feature a continuing series of Standridge paintings and individual artist exhibitions as well as theme and invitational shows by artist from all geographic regions. We represent a diverse group of artistic styles of painting, sculptures and preeminent glass collection. Hours: Tue. & Thur., 10am-4pm or by appt. Contact: at (www.ricstandridge.com).

Sea Island Gallery, 115 Pelham Road, Pelham Court Shopping Center, Greenville. **Ongoing** - Original SC & southwest paintings by Douglas Grier, raku pottery by Tim Tyler, oils on paper by Betsy Bayne and a wide selection of prints by many artists. Hours: Tues. - Fri., 10am - 5:30pm; Sat., 10am - 4pm. Contact: 864/271-2007.

10 Central Avenue Studios, 10 Central Ave., is centrally located in the Heritage Historic District of Greenville. **Ongoing** - The studios is a unique gallery and working space for professional and emerging artists that invites the public inside the artistic process through shows, events, education and conversations with working artists. We also offer services for Giclée reproductions and framing. Featuring works by Laura K. Aiken, Joseph Ambuhl, Jeanne Blinkoff, Larry Coble, Deborah Feiste, Kay Larch, J.J. Ohlinger, Julia Peters, Georgia Pistolis, Jill Patterson Schmidt and Judith Woodward. Hours: Mon.-Fri., 10am-1pm & 2pm-5pm or by appt. Contact: Julia Peters at 864/370-0301 or at (www.10CentralAve.com).

New Gallery
The Art Cellar LLC, 123 B. South Main Street, directly across the street from the Westin Poinsett Hotel, underneath Bellacinos, Greenville, SC. **Ongoing** - Unique art gallery in downtown Greenville featuring over 40 local artists in variety of mediums and styles. Hours: Mon., Tue., & Thur., 11am-6pm; Fri., 11am-9pm; and Sat., 9am-9pm. Contact: 864/419-5032 or at (www.greenvilleartcellar.com).

The Arts Company, 1451-B Woodruff Road, (Shoppes at Woodruff-three doors down from Staples) Greenville. **Ongoing** - We have hand-crafted items from local and National artists such as Pottery, Stained Glass, Blown Glass, Woodworking, Metalworking, Jewelry, Yard Art, etc. Artists include Warren Carpenter, Chris Pittman, Chris Troy, Bill Campbell, Kent Follette, Katherine Owen, Lee Miller, Sarah Mandell, Lewis Holloway, Paul Anthony, etc. Hours: Mon.-Sat., 10am-6pm. Contact: 864/675-3808 or at (www.artscomp.com).

T.L. Norris Gallery, 1 Wade Hampton Blvd., Greenville. **Ongoing** - The TL Norris Gallery, based in downtown Greenville, SC, represents

many of the best and brightest contemporary artists of our time. The gallery represents artists who have shown an ability to emerge from the crowd and make a name for themselves as artists, worthy of serious collectors and museum acquisitions. We present a series of rotating exhibitions throughout the year and host show opening and closing events several times a month. Hours: Tue.-Fri., noon-6pm & Sat., noon-5pm. Contact: 864/991-8645 or at (<http://www.tlnorrisgallery.com>).

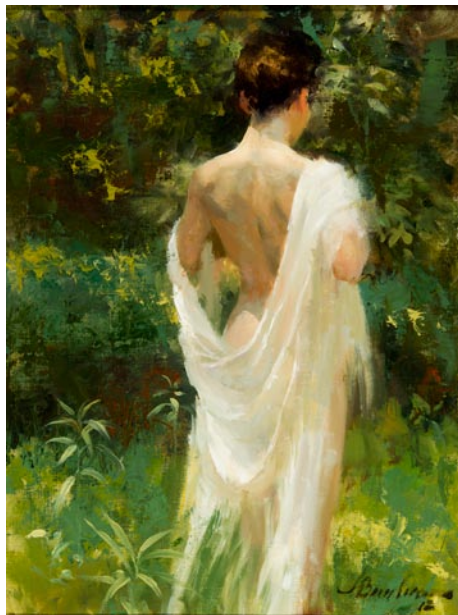
Hilton Head Island

Camellia Art, 8 Pope Avenue, Hilton Head Island. **Ongoing** - Featuring custom framing and art gallery with works by Marge Agin, Evelyn B. Ballentine, Vickie Ebbers, Cassandra M. Gillens, Kelly Graham, Ben Ham, Brucie Holler, Bill Little, Louanne Laroache, Lynn Parrott, Laurie McIntosh, Brian Vaughn, and Martha Worthy. Hours: Mon.-Fri., 8:30am-5:30pm & Sat., 9am-1pm. Contact: 843/785-3535 or at (<http://www.camelliaart.com>).

Fastframe, 95 Matthews Dr., unit A-6, Hilton Head Island. **Ongoing** - Featuring original work in oils, acrylics, pastels, water colors, and gouache, by David Randall and a variety of local artists. Also a broad mix of limited editions, prints and posters also available. Hours: Mon.-Fri., 10am-6pm & Sat., 10am-5pm. Contact: 843/342-7696 or at (www.fastframe.com).

Island Ideas Gallery, The Fresh Market Shoppes, Wm. Hilton Pkw., Hilton Head Island. **Ongoing** - Serving the Lowcountry since 1986. Representing local, regional and national artists in a wide variety of media. Extensive selection of prints, posters, photography, and giclee reproductions. Vast selection of framing materials. Offering fine art giclee reproduction services with state-of-the-art equipment. Hours: Mon.-Fri., 8am-6pm & Sat., 8am-4pm. Contact: 843/842-6261.

jcostello gallery, 8 Archer Rd., red fish restaurant building, Hilton Head Island. **Ongoing** - Representing an international landscape in compositions of oil, photography and print-making, from the Lowcountry to Morocco, Budapest, Kyoto, Latin America, and Provence. Hours: Mon.-Sat., 1-9pm & Sun., 5-9pm or by appt. Contact: 843/686-6550 or at (www.jcostellogallery.com).



Work by Joe Bowler

Morris & Whiteside Galleries, 220 Cordillo Parkway, Hilton Head Is. **Ongoing** - Presenting a broad collection of 19th and 20th century representational American paintings and sculpture. Landscapes, still lifes, genre scenes, figures and historical subjects by many of America's leading representational artists, impressionists and expressionists are available for discriminating private, corporate and institutional collectors. Hours: M-F, 9am-5pm; Sat., 10am-3pm or by appt. Contact: 843/842-4433 and at (www.morriswhiteside.com).

Picture This Gallery, Cypress Square, 78 Arrow Road, Suite D, near Sea Pines, Hilton Head Island. **Ongoing** - Cool bohemian art gallery in the exclusive resort of Hilton Head Island. We offer custom picture framing, original artwork, and art & frame restoration. This adorable space has a comfortable atmosphere that beckons one to stay for a while. Owners Mira Scott & Mark S. Tierney have created a space to exhibit their work and select guest artists, sculptors, jewelers, photographers and writers are represented. Featuring work by Mira Scott, Mark S. Tierney, Steven A. Chapp, Alexis Kostuk, James Herrmann, Sheri Farbstein, James Peach, Robert Stark, Terry Richard, Mary C Leto, Kashmira Lodaya, Jeanne

Bessette & Barbara Miller. Hours: Tue.-Fri., 9:30am-5:30pm; Sat., 9:30am-12:30pm or by appt. Contact: 843/842-5299 or at (www.picturethishiltonhead.com).

Pink House Gallery, 1503 Main Street Village,, Hilton Head Island. **Ongoing** - Featuring original art work of regional and nationally known artists; plus unique handcrafted gift items. Also, the best selection of prints and posters in the area. Hours: Mon.-Fri., 10am - 6pm & Sat., 10am-5pm. Contact: 843/681-5169.

Smith Galleries, Gallery of Fine Craft, Art, & Framing, in the Village at Wexford, upstairs in Ste. J-11, 1000 William Hilton Parkway, Hilton Head Island. **Ongoing** - Hilton Head's complete gallery representing more than 300 of the country's finest craftsmen offering the finest in the area of jewelry, kaleidoscopes, wooden jewelry boxes, Sticks furniture, art glass, kitchen utensils, metal and pottery. The gallery carries original art as well as fine prints and reproductions and offers complete framing services. Hours: Mon.-Sat., 10am-6pm. Contact: 843/842-2280 or at (www.smithgalleries.com).

Lake City

Olio Studio, 104 West Main Street, Lake City. **Ongoing** - Olio Studio is an art studio that offers classes, workshops, arty parties, paint your own pottery, local art and other art events & activities. Hours: Mon., 1-6pm; Tue.-Fri., 10am-6pm; and Sat., 10am-5pm. Contact: 843/374-6546 or at (www.olio-studio.com).

Lancaster

Bob Doster's Backstreet Studio, Gallery, & Garden, 217 E. Gay St., at the intersection of White St. & Gay St., one and one half blocks east of Main St., Lancaster. **Ongoing** - Featuring works by award winning sculptor Bob Doster, along with changing exhibits of local, regional, and national artists working in all mediums. Hours: by appt only. Contact: 803/285-9190 or at (www.bobdoster.com).

Chastain's Studio Lofts, 107 South Main Street, Lancaster. **Ongoing** - Chastain's Studio Lofts is a place for artists, wanna-be artists and those who appreciate visual arts or want to learn more about it. It's a place of color and shapes, of imagination and beauty, of heart and soul. Most of the pieces were done by artists from Lancaster County and the surrounding communities, and most pieces are for sale at reasonable prices. Classes are also offered at the gallery. Hours: Tue. and Thur., 1-5pm and by appt. Contact: 803/804-3659 or at (www.chastainsstudiolofts.com).

Gallery 102, 102 Williams Street, Lancaster. **Ongoing** - Lancaster's newest gallery features works by artists from throughout the region and beyond. Included are jewelry, paintings, photography, pottery, functional artwork, sculpture, folk and fine arts. Hours: Mon.-Wed., 9am-5pm & Sat., 9am-1pm. Contact: 803/804-1902 or e-mail at (info.gallery102@gmail.com).

Latta

RJK Frames and Things, 112 E. Main Street, Latta. **Ongoing** - Featuring Imperial Russian bone china, exceptional gold trimmed lacquer boxes, Soviet propaganda posters, rare Russian Orthodox Icons and Avant Garde drawings. Hours: Tue.-Sat., 8am-6pm. Contact: 843/752-9319 or (<http://www.rjkframesandthings.com/>).

Lexington

Mary Elliott Williams' Studio, 1044 Hope Ferry Rd., Lexington. **Ongoing** - Precious Faces, artworks mainly in pastel and oil, commissions accepted. Hours: by appt. Contact: 803/356-0381 or at (www.artistsofthesouth.com).

Sandlapper Art & Frame, 711 E. Main St., Suite M, downstairs in Lexington's Historic Old Mill, Lexington. **Ongoing** - Offering custom picture framing and fine art sales. Also handmade gifts such as pottery, jewelry, metal art, etc. The store has a very "coastal" flair but all mediums and subjects are exhibited. Hours: Tue.-Fri., 10am-6pm; Sat., 10am-3pm; & by appt. Contact: 803/785-4278 or at (www.sandlapperart.com).

Mt. Pleasant - Isle of Palms - Sullivan's Is.

Accent Framing & Gallery, 1303 Ben Sawyer Blvd., Mt. Pleasant. **Ongoing** - Original art by many of the Lowcountry's best artists featuring Martin Ahrens, Fletcher Crossman, Lynn Salkeld, Charles Parnell and Shea Fowler. Hundreds of prints and photographs in stock. We also offer painting lessons by master artists. Hours: M.-F., 10am-6pm & Sat., 10am-4pm. Contact: 843/884-5828.

Adele's Pottery Studio & Gallery, 1659 Middle St., Sullivan's Island. **Ongoing** - Featuring wheel thrown & hand-built clay works by Adele Deas Tobin. Also offering classes for children and teens. Pottery on the wheel Sept.-May. Hours: daily, 11am-5pm & by appt. Contact: 843/883-9545.

Artwerx Framing & Galleria, The Plaza @ Park West, Mt. Pleasant. **Ongoing** - Featuring a unique, one-of-a-kind collection of original artwork, prints, giclees, hand painted gifts, custom mirrors, hand blown glass lamps, and hand made jewelry by local artists such as Greg Drexler, Susan Hauser, Will Helger, Steve Neff, Richard Rose, Michael Story, and photographer Lea Dales. Also - Professional, on-site custom framing, as well as a space for gifts. Hours: Mon.-Fri., 9am-6pm & Sat., 10am-4pm. Contact: 843/971-4643.

Complements Gallery, 630 Johnny Dodds Road, Mt. Pleasant. **Ongoing** - Featuring pottery by Mary Jeffries. Hours: Mon.-Sat., 10am-5pm. Contact: 843/881-4035.

Karen's Korner, Gateway to the Beach center, 1405 Ben Sawyer Blvd., near CVS, Mt. Pleasant. **Ongoing** - Offering high quality custom framing, originals and prints by Charlynn Knight, Carol McGill, Sabine Avacalade, Kevin Curran, and Carol Ann Curran. Photography by Scott Henderson, Marc Epstein, as well as pottery, stained glass and other fine art objects. Hours: Mon.-Fri., 10am-6pm & Sat., 10am-4pm. Contact: 843/971-4110 or at (www.karenskorner-frameandart.com).

Sandpiper Gallery, 2201 Middle Street, across the street from Poe's Restaurant and beside Station 22 Restaurant, Sullivan's Island. **Ongoing** - Minutes from Charleston on charming Sullivan's Island, the gallery features a fresh mix of breath-taking paintings, pottery, exquisite jewelry and unique works in wood, glass and metal. The eclectic collection of works in this gallery is sure to bring a smile and will interest both the seasoned fine art collector as well as the fine craft enthusiast; from stunning paintings to special gifts from the lowcountry. Hours: Mon.-Sat., 11am-6pm. Contact: 843/883-0200 or at (www.sandpipergallery.net).

The Treasure Nest Art Gallery, 1055 Johnnie Dodds Blvd., Hwy. 17 frontage road., Crickentree Village, Mt. Pleasant. **Ongoing** - Featuring over 700 hand-painted oils and 1,000 frames at wonderful quality and truly superb value. Works by highly accomplished artists from the Southeast, US National, and International locales. Offering a great variety of subjects including: Lowcountry marschscapes, beachscapes, wildlife, boats, bridges and architecture; other US and European landscapes, cityscapes, and harbors; as well as still lifes, abstracts and much more. Hours: Mon.-Sat., 10am-6pm & Sun., 1-5pm. Contact: 843/216-1235 or at (www.treasurenestartgallery.com).

Myrtle Beach / Grand Strand

Chapin Park, 1400 Kings Hwy and 16th Ave. N., Myrtle Beach. **Oct. 11 & 12 and Nov. 1 & 2** - "42nd Annual Art in the Park - Show & Sale," sponsored by Waccamaw Arts and Crafts Guild. We will have over 60 artists from the East Coast, as far away as TN, with about 20 of those artists from our local area. Typical art will include paintings, woodworking, photography, jewelry, fabric, glass, metal, pottery, leather and stone. Free admission and Kid friendly. For info call JoAnne Utterback, 843/446-3830 or at (www.artsyparksy.com).

Valor Park, 1120 Farrow Parkway, The Market Common, Myrtle Beach. Valor Park, at The Market Common, in Myrtle Beach. **Nov. 8 & 9** - "Waccamaw Arts and Crafts Guild's 42nd Annual Art in the Park". We will have over 60 artists from the East Coast and as far away as Tennessee with about 20 of those artists from our local area. Typical art will include paintings, woodworking, photography, jewelry, fabric, glass, metal, pottery and stone. No admission charge. Child and Pet Friendly! Contact: JoAnne Utterback at 843/446-3830 or (www.artsyparksy.com).

Art & Soul, an Artisan Gallery, 5001 North Kings Highway, in the Rainbow Harbor plaza, Myrtle Beach. **Ongoing** - Featuring works by such local artists as Giuseppe Chillico, Kim Clayton, Dina Hall, Carl Kerridge, Alex Powers, Robert Sadlemire and Ed Streeter. Hours: Mon.-Fri., 10am-5pm & Sat., 10am-4pm. Contact: 843/839-2727 or at (www.artandsoulmb.com).

Collectors Cafe & Gallery, 7726 North Kings Highway, Hwy. 17 and 78th Avenue, Myrtle Beach. **Ongoing** - 5,000 square foot gallery featuring local and regional artists. Hours: Regular cafe hours. Contact: 843/449-9370.

continued on Page 63