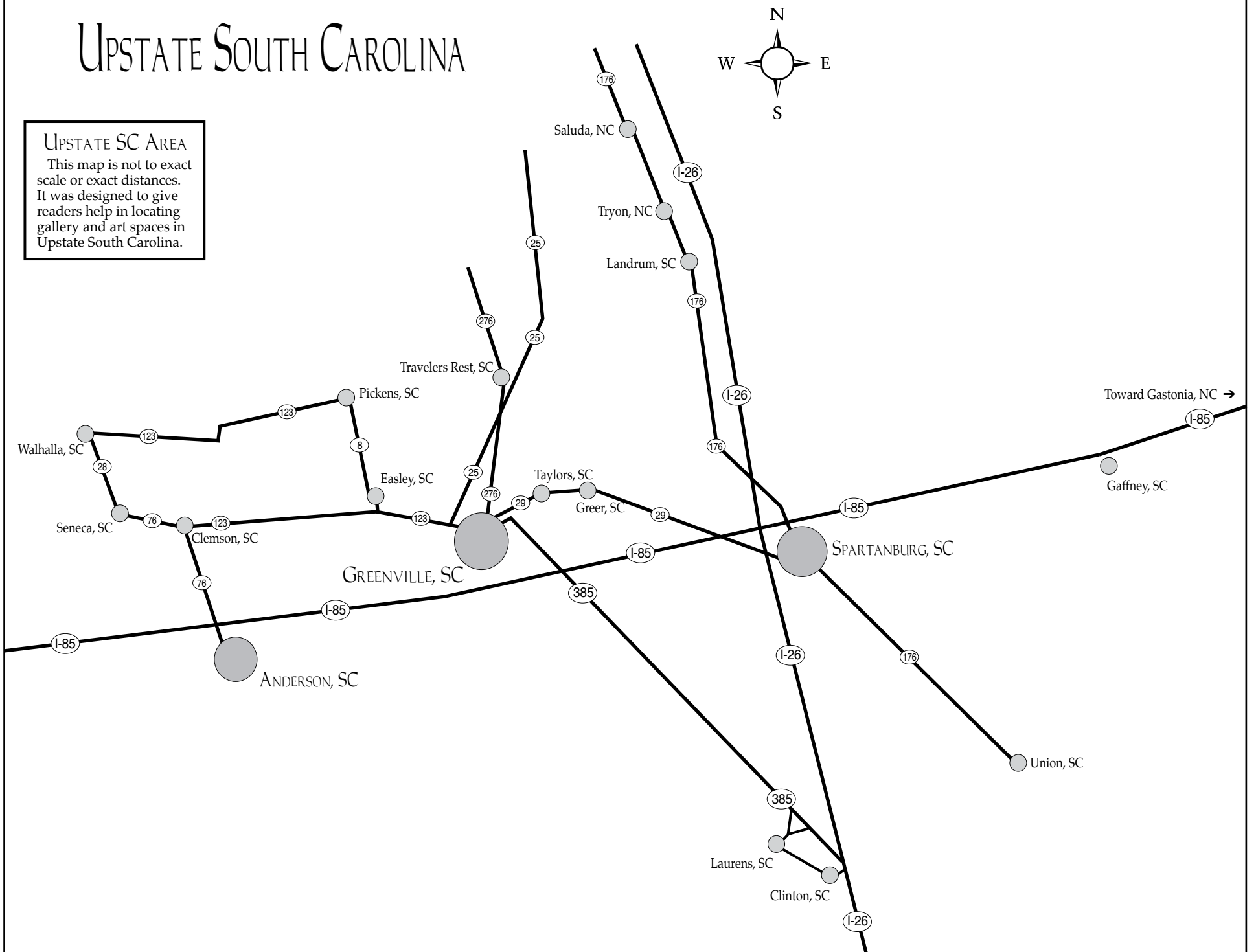


# UPSTATE SOUTH CAROLINA

## UPSTATE SC AREA

This map is not to exact scale or exact distances. It was designed to give readers help in locating gallery and art spaces in Upstate South Carolina.



## Artists' Guild of Spartanburg

continued from Page 48

relied heavily on the forms and scenes I found in nature as a means of creative expression. Some of the pieces I included in this show have been works in progress over several years; others were produced in a matter of days or even hours. The process has been very non-linear, yet profoundly organic and satisfying. I feel personal experience is one of the truest stories that someone can offer to you and these pieces visually transmit the ideas I find so difficult to articulate verbally. Works like 'The Red Lotus' and 'Coexist' are emotionally complex; these works represent a time or times in my life when I have felt pulled under or even just at a stillness. The reasons are varied and the

circumstances often differ but ultimately *Mechanisms of Resilience* is a body of work in which I use natural imagery to tell my own emerging story."

Wise is sharing not only her interpretation of nature and the nature of man, but her personal stories, obscured and synthesized into symbolic gestures. The artist is revealing intimate relationships, love and loss, desire and rejection, comfort and inquietude, her experiences of returning home.

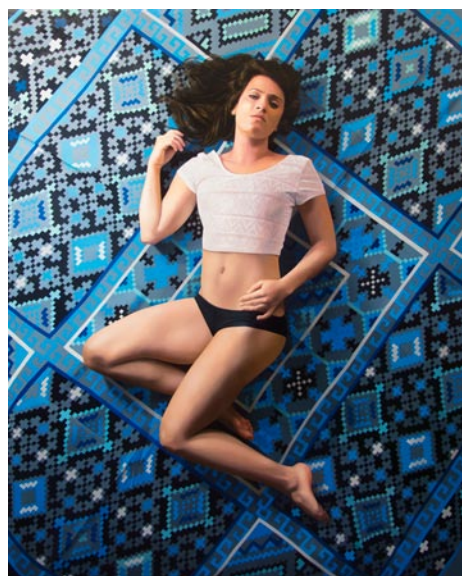
For further information check our SC Institutional Gallery listings, contact Caitlin Boice by e-mail at (artistsguild@spartanarts.org) or call 864/764-9568.

## Converse College in Spartanburg Offers Works by Karen Ann Myers

Converse College in Spartanburg, SC, is presenting *This is What Makes Us Girls*, featuring a large selection of paintings and works on paper by Charleston, SC, artist Karen Ann Myers, on view in the Milliken Art Gallery at Converse College, through Sept. 25, 2014. An artist's talk will be offered on Sept. 4, at 6pm, with a reception following at 6:30pm.

*Flavorwire* online recently described Myers' work as "psychologically intense, densely decorated portraits examine our culture's hyper sexualized obsession with glamour and physical beauty, touching on its aesthetic extremes, seductive appeal, and emotional casualties. Each image represents a certain aspect in a sort of collective self-portrait, with her subjects inhabiting a kaleidoscope of loneliness, power struggles, cocktail dresses, and clashing patterns."

Myers says that with her paintings she is "investigating the psychological complexity of women through intimate



Work by Karen Ann Myers

observations in the bedroom. The work is inspired by the cult of beauty in contem-

porary mass media. Intricately painted, decorative interiors are invented to titillate the viewer."

Myers is an artist, educator and curator. She received an MFA in Painting from Boston University and a BFA in Studio Art from Michigan State University. Her paintings and works on paper exist nationally and internationally in private collections and have most recently been exhibited at LUIS DE JESUS gallery in Los Angeles, CA, Robert Steele Gallery in NY, NY, at the Commonwealth Gallery in Boston, MA, the Katzen Arts Center in Washington, DC, the Lamar Dodd School of Art, University of Georgia, Athens, GA, Dalton Gallery at Agnes Scott College in Decatur, GA and the Visual Arts Gallery, University of Alabama, Birmingham, AL.

Founded in 1889 and located in the heart of Spartanburg, Converse College is home to six colleges and 13,000 college students. Converse helps women develop the skills necessary to balance

a full life. Students develop their unique voices through our challenging liberal arts curriculum, century-old honor tradition, and Daniels Center for Leadership and Service. Our close-knit residential community cultivates a spirit of sisterhood and enterprise among women diverse in backgrounds and interests. Across the board—from art and design to science, business, music and education—professors actively mentor and challenge students through spirited discussions inside and outside of the classroom. The Nisbet Honors Program, Petrie School of Music, independent and collaborative research opportunities, leading national debate teams, study abroad and internship programs, and a 10:1 student/faculty ratio differentiate the Converse learning community.

For further information check our SC Institutional Gallery listings, contact Kathryn Boucher, Milliken Art Gallery Director by e-mail at (kathryn.boucher@converse.edu).

## Eno Gallery in Hillsborough, NC, Offers Exhibition of Window Views

Eno Gallery in Hillsborough, NC, is presenting *The Windows View*, featuring works by 16 contemporary artists from throughout the country, on view through Oct. 19, 2014.

This intriguing theme will be represented with works that are abstract, metaphorical, and representational.

The notion of seeing is implied in the term 'window' itself, with notions of opening, showing, and light. The ordinary windows in our houses demarcate a boundary between inside and outside, between what's private and what's public. There are numerous ambiguities presented by the windows view, not the least of which is the viewer as voyeur. The window becomes a frame for its variable content, a marker of difference between what is inside and outside. Looking through the window from either side crosses a



Work by Marlise Newman

boundary. The window can also be seen as a metaphor. The intimate relation between the window, seeing, and perception has become part of our everyday language.

For further information check our NC Commercial Gallery listings, or call the gallery at 919/883-1415 or visit (www.enogallery.net).

Check us out at ([www.carolinaarts.com](http://www.carolinaarts.com)) or e-mail to ([info@carolinaarts.com](mailto:info@carolinaarts.com))