

NC Commercial Galleries

continued from Page 58

The Joyful Jewel, 44-A Hillsborough Street, Pittsboro. **Ongoing** - Featuring local art fresh from the Heart. Mariah Wheeler is shopkeeper at this gallery/gift store in downtown Pittsboro. We feature exquisite art and gifts from over ninety local artists, with a price range to suit your budget. You will find baskets, books, jewelry, cards, paintings, photography, sculpture, from glass, wood, clay, fiber, and more. On Fri. evenings the gallery features local musicians, poets, and other performance art with a wide array of talent. Hours: Mon.-Sat., 10:30am-5:30pm & Sun., noon-4pm. Contact: 919/883-2775 or at (www.joyfuljewel.com).

Raleigh Area

Adam Cave Fine Art, 2009 Progress Court, Raleigh. **Ongoing** - Representing a select group of regional and nationally known artists, including Joseph Cave, David Hewson, Stephen Aubuchon, Wayne Taylor, and Donald Furst. The gallery will also be introducing some new, young talent to the area, including Massachusetts painter Jennifer O'Connell. Hours: Tue.-Sat., 11am-5pm & by appt. Contact: 919/838-6692 or at (www.adamcavefineart.com).

Artcraft Gallery, 406 W Hillsborough Street, Raleigh. **Ongoing** - Funky, functional and fine art by several co-op artists. Hours: Mon.-Thur., 9am-5pm; Fri., 9am-1pm & 1st Fri., 6pm-midnight. Contact: 919/832-5058 or at (www.artcraftsignco.com).

ArtSource Fine Art & Framing, 4421-123 Six Forks Road (behind Bonefish Grill, across from Brother's Cleaners at North Hills...look for the red door), Raleigh. **Ongoing** - ArtSource is a fine art gallery housing over 1,600 works of art by 65+ artists. This award-winning gallery has assisted collectors and businesses in the selection of fine art, custom art pieces and framing for over 20 years. Hours: Mon.-Sat., 10am-6pm and Sun., 1-5pm. Contact: 919/787-9533, or at (www.artsources-raleigh.com).

Ashley's Art Gallery, 701 N. Main St, located 12 miles south of Raleigh, Fuquay-Varina. **Ongoing** - Featuring fine art originals by national and local artist including Terry Isaac, Braudt Bralds and John Weiss and reproductions by Pino, Robert Bateman, Carl Brenders, Bev Doolittle and William Mangum. Hours: Mon.-Thur., 11am-6pm & Fri.-Sat. 10:30am-5pm. Contact: 919/552-7533 ext.3 or at (www.ashleyart.com).

Flanders Gallery, 505 S. Blount Street, Raleigh. **Ongoing** - Flanders Gallery is committed to cultivating the careers of emerging artists. Through its rigorous exhibition program, the gallery continues to explore new concepts in contemporary art using various media. Flanders Gallery is dedicated to exhibiting provocative and innovative contemporary art, producing 14-18 exhibits each year both in the gallery and in alternative exhibit spaces. Hours: Wed.-Sat., 11am-6pm. Contact: 919/757-9533 or at (<http://flandersartgallery.com>).

Gallery C, 540 North Blount Street, Raleigh. **Aug. 1 - Sept. 3** - "New Works," by Kathy Daywalt and Lee Mims. A reception will be held on Aug. 2, from 6-9pm. Hours: Tue.-Fri., noon-6pm; Sat., 11am-5pm & Sun., 1-5pm. Contact: 919/828-3165 or at (www.galleryc.net).

Glenwood Gallery Art & Antiques, 610 W. Johnson St., Raleigh. **Ongoing** - Featuring works by Edwin D. Alexander, Barbara Evans, Michael Manas, Nancee Clark, Michael Van Horn, Rob Cox, Jim Green, Stan Strikland, Mark Tomczyk. Hours: Call. Contact: 919/829-7202.

Litmus Gallery & Studios, 312 W. Cabarrus Street, (across the tracks from Amtrak Train Station) Raleigh. **Ongoing** - Regional emerging and/or established artists are featured every month with a reception from 6-9pm the first Friday of each month. Studios of resident artists are open for touring, viewing, and selling of art (paintings, sketches, sculptures, pottery, mixed media, photography, etc.). Hours: Thur., 10am-2pm or by appt. Contact: 919/571-3605 or at (www.litmusgallery.com).

Local Color Gallery, Carter Building, 22 South Glenwood Ave., Raleigh. **Ongoing** - The gallery has now grown into a women's artist cooperative 13 members strong. Hours: Thur., Fri., & Sat., 11am-3pm. Contact: 919/754-3887 or at (www.localcolorraleigh.com).

Nicole's Studio & Art Gallery, 719 N. Person St., Raleigh. **Ongoing** - The gallery represents local and nationally recognized artists in all

genre specializing in excellence in Contemporary Realism. Up to 20 artists represented include; Rick McClure, Lori Putnam, Dawn Whitelaw, Nicole Kennedy, Kim Maselli, Dan Nelson. Hours: Tue.-Fri., 10:30am-5pm; Sat., noon-4:30pm; and 1st Fri., till 8:30pm. Contact: 919/838-8580 or at (www.nicolestudio.com).

Roundabout Art Collective, 305 Oberlin Road, Raleigh. **Ongoing** - Bringing together a diverse group of Wake County artists who have created a magnet location for exhibiting and selling art. Hours: Wed.-Sat., noon-5pm, and Sun., 1-5pm. Contact: 919/747-9495 or at (www.roundaboutartcollective.com).

The Mahler Fine Art, Mahler Building, 228 Fayetteville St., Raleigh. **Ongoing** - Featuring a dynamic venue dedicated to significant art of our time, committed to offering the best in regional and national fine art by emerging and established artists. Hours: Tue.-Fri., 11am-5pm; Sat., noon-4pm. Contact: 919/896-7503 or at (www.themahlerfineart.com).

311 - Martin St Gallery and Studios, 311 Martin Street, Warehouse District, Raleigh. **Ongoing** - Featuring three exhibit galleries, studios by tenant artists, The Print Studio, and the meeting place for The North Carolina Printmakers. Hours: Tue.-Sat., 11am-6pm and 6-9pm on 1st Friday of the month. Contact: 919/821-2262 or at (<http://311gallery.com/>).

Tipping Paint Gallery, 428 S. McDowell Street, Raleigh. **Ongoing** - The gallery is a group of artists that have worked together since 2009 planning and hanging exhibits, marketing, community outreach, and supporting and encouraging each other in our artistic endeavors. In 2011, the group found a great location in the heart of downtown Raleigh where we opened Tipping Paint Gallery in June. Our mission is two-fold: to exhibit quality art on a year-round basis and to continue to strive for personal artistic growth. Hours: Thur., 11am-3pm; Fri., 11am-3pm & 5-8pm; Sat., noon-8pm or by appt. Contact: 919/928-5279.

New Gallery

Triangle Cultural Art Gallery, 8320 Litchford Road, Suite 138 Raleigh. **Ongoing** - The Triangle Cultural Art Gallery cultivates and exhibits art that reflects the triangle's diverse cultural heritage and artistic expression. Through the engagement of cultural art awareness and events, we help build our local community. Hours: Tue.-Fri., 10am-6pm & Sat., 9am-5pm. Contact: call 919-900-8055 or at (www.trianglenculturalart.com).

Randleman

Joseph Sand Pottery, 2555 George York Road, Randleman. **Ongoing** - Featuring wood-fired, salt and ash glazed pottery by Joseph Sand at kiln openings held three times each year. Hours: by appt. only. Contact: 612/518-4051 or 336/460-0259 and at (<http://www.jsspottery.com/>).

New Salem Pottery, 789 New Salem Road, Randleman. **Ongoing** - Established in 1972, New Salem Pottery is owned and operated by Hal Pugh and Eleanor Minnock-Pugh. Hal and Eleanor produce a variety of original redware and stoneware pottery. Years of work at the wheel and the subtle evolutionary convergence of originality with past traditions make their pottery recognizable by its own style. The slip decorated redware pitcher shown above is illustrative of their art. Hours: Wed.-Sat., 10am-5pm. Contact: 336/498-2178 or at (www.newsalempottery.com).

Rutherfordton

Ornamentals and Finer Welding, Inc., 142 West Court St., Rutherfordton. **Ongoing** - Featuring works by master artisan Tom Elfers. Hours: Mon.-Fri., 9am-5pm and Sat., 10am-5pm. Contact: 828/288-3001 or at (www.ornametals1.com).

Salisbury/Spencer

Green Goat Gallery, 516 S. Salisbury Ave., just off I-85, across from the North Carolina Transportation Museum, Spencer. **Ongoing** - Housed in the historic 20th century Sands Building, the gallery features fine and folk art, photography, exquisite handcrafted functional crafts and jewelry, and eclectic recycled and found art by local, regional, and national artists. Hours: Tue.-Sat., 10:30am -5:30pm. Contact: 704/639-0606 or at (www.greengoat-gallery.com).

Pottery 101, 101 S. Main St., from I-85, take exit #76 (Innes St.) toward downtown - we are on the corner of Innes and Main, Salisbury.

Ongoing - The destination for beautiful hand-crafted pottery. Hours: Tue.-Fri., 10am-6pm & Sat., 10am-5pm. Contact: 704/209-1632.

Rail Walk Studios & Gallery, 409 - 413 N Lee St., in the Rail Walk Arts District, Salisbury. **Ongoing** - Featuring works on display by Marietta F. Smith, Sharon Forthofer, Karen Frazer, Kenneth Koskela, Elizabeth H. McAdams, Julie Pontell and Keyth Kahrs. Each of the artists has a unique style and body of work. Visitors will find original art in oil, acrylic, watercolor, pastel, and other mediums, as well as sculpture, hand-made jewelry, pottery, and digital photography, making Rail Walk a great place to purchase a wide variety of original art in all price ranges. Hours: Thur.-Sat., 11am-4pm. Contact: 704/431-8964 or at (www.railwalkgallery.com).

Southern Spirit Gallery, 102 South Main St., Salisbury. **Ongoing** - The shop offers a wide array of art and crafts from over 60 artists, most from North Carolina. There is jewelry, paintings, glass and pottery. Hours: Mon.-Sat., 10am-5pm. Contact: 704/633-0761.

Saluda Area

Heartwood Contemporary Crafts Gallery, 21 East Main Street, Saluda. **Ongoing** - Featuring contemporary works of handmade wearables, jewelry, paper, paintings, fine porcelain, stoneware, glass, metal and wood. Hours: Mon.-Sat., 10am-5pm & Sun., noon-5pm. Contact: 828/749-9365 or at (www.heartwoodsaluda.com).

Seagrove Area

Throughout Seagrove, Aug. 10, from 10am-5pm - "Tea with Seagrove Potters". Six Seagrove pottery shops have partnered with Carriage House Tea and The Table, both of Asheboro, NC, to provide a flavor-filled tour for Tea with Seagrove Potters. Carriage House Tea will provide loose leaf teas and The Table will provide fresh baked pastries and their own brand of tea to be sampled at participating shops. Try something different at every stop, visit with potters and learn about how they use their wares to bake, brew, cook, serve and decorate. Participating shops include Blue Hen Pottery, Dean & Martin Pottery, Eck McCannless Pottery, From the Ground Up Pottery, Red Hare Pottery at Great White Oak Gallery and Thomas Pottery. This is a free event and open to all ages. Each shop has its own unique style of pottery and will feature different items. Visitors can expect a large selection of teapots, teacups, tumblers, pitchers and other serving ware, along with decorative pieces. Maps and information will be available at each shop. More information can be found at (www.TeaWithSeagrovePotters.webstarts.com) or by calling 336/879-4145.

A. Teague Pottery/EJ King Pottery, 2132 Hwy. 705, Seagrove. **Ongoing** - Featuring works by several potters form the "village" with their traditional shapes of the Seagrove area. Contemporary, electric fired stoneware. Traditional glazes and melted glass glaze. Hours: Mon.-Sat., 10am-5pm. Contact: 910/464-5400.

A.R. Britt Pottery, 5650 Hwy, 220 S., Seagrove. **Ongoing** - Hand-turned/handmade traditional Seagrove style pottery, original formulated glazes, and functional stoneware in the tradition of Nell Cole Graves style by Aaron R. Britt. Hours: Tue.-Sat., 9am-5pm & Sun., noon-6pm. Contact: 336/873-7736 or at (www.seagrovepottery.net).

Albright Pottery, 6597 New Center Church Rd., Seagrove. **Ongoing** - Featuring traditional, salt glaze and red functional pottery by Arlie G. Albright. Hours: Tue.-Sat., 9am-5pm. Contact: 336/879-4209.

Anita's Pottery & Dogwood Gallery, 2513 Hwy. 705, Seagrove. **Ongoing** - Turning since 1987, Anita Morgan is best known for her miniature pottery, but also has many functional and decorative items. Glazes include cobalt blue, burgundy, hunter green, shiny black, yellow, rose pink, earthy brown, lime green and purple. Hours: Mon.-Sat., 10am-5pm. Contact: 336/879-3040 or at (www.anitaspottery.com).

Avery Pottery and Tileworks, 636 Potters Way, Seagrove. **Ongoing** - Finely crafted ceramic forms by Blaine Avery. Extraordinary vessels, unique hand-painted tiles. Hours: Tue.-Sat., 10am-5pm. Contact: 336/873-7923 or at (www.averypotteryandtileworks.com).

Ben Owen Pottery, 2199 S. Hwy. 705, Seagrove. **Ongoing** - Wood-fired, traditional and contemporary works using local clay by Ben Owen III. Colors ranging from Chinese red to Chinese blue. Hours: Tue.-Sat., 10am-5pm (closed in Jan.). Contact: 910/464-2261 or at (www.benowenpottery.com).

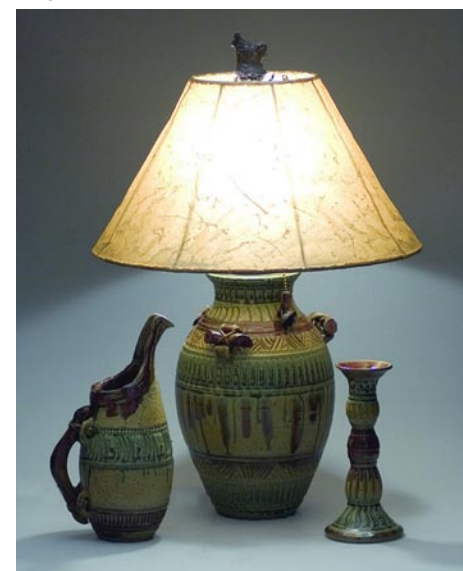
Blue Hen Pottery, 247 West Main Street, Seagrove. **Ongoing** - Narrative pots for daily use. Wood-salt stoneware and colorful earthenware. Hours: Wed.-Sat., 10am-5pm or by appt. Contact: 336/653-9551 or at (www.bluehenpottery.com).

Blue Stone Pottery, 2215 Fork Creek Mill Rd., Seagrove. **Ongoing** - Featuring traditional, functional stoneware pottery. Hours: Tue.-Fri., 10am-4pm & Sat., 9am-5pm. Contact: 336/879-2615 or e-mail at (audreyvalone@bellsouth.net).

Bulldog Pottery, 3306 Alt. 220, Seagrove. **Ongoing** - Bruce Gholson and Samantha Henneke collaborate to make graceful forms, and develop their own unique glazes. Expect distinctively unusual work at Bulldog Pottery. Hours: Tue.-Sat., 9:30am-5pm; Sun. or Mon. by chance or call. Contact: 910/428-9728 or at (www.bulldogpottery.com).

Cady Clay Works, 3883 Busbee Rd., Seagrove. **Ongoing** - Johannes "John" Mellage and Beth Gore work with a variety of clays and glazes to create functional and decorative ware with richly layered surfaces. Hours: Tue.-Sat., 10am-5pm or by appt. Contact: 910/464-5661 or at (www.cadyclayworks.com).

Cagle Road Pottery, 603 Cagle Rd., Seagrove. **Ongoing** - Featuring dinnerware and a wide variety of glazes. Electric, gas and wood-fired salt and ash glazes. Hours: Mon.-Sat., 8am-5pm. Contact: 336/879-2802 or e-mail at (caglerdpottery@yahoo.com).



Works from Caldwell-Hohl Artworks

Caldwell-Hohl Artworks, 155 Cabin Trail, Seagrove. **Ongoing** - Featuring contemporary stoneware, sculptures, large garden urns and contemporary fiber art. Hours: Mon.-Sat., 10am-5pm (call first). Contact: 336/879-9090 or at (www.caldwellhohl.com).

Callicutt Pottery, 5137 Seagrove Plank Rd., Seagrove. **Ongoing** - Featuring a good selection of functional stoneware in many colors including brown, black and white, green and burgundy, green and gold, black and burgundy and yellow by Gary Callicutt. Hours: Mon.-Sat., 10am-5pm. Contact: 336/873-7898 or e-mail at (gary51@rtelco.net).

Carolina Crockery Gallery, 326 Adams Road, (Just off of Hwy 705 between WhyNot and Westmoore, or take Steeds Road exit from Hwy 73/74 or Hwy 220 and head towards Seagrove, just down the road from Sid Lucks!) Seagrove. **Ongoing** - The gallery is a multi-media gallery, offering handmade pottery from Morgan Hatfield of Hatfield Pottery, Levi Mahan, and assorted potters from the area. We also carry wood art pieces including cutting boards and custom furniture from Joel Tucker of Southern Wood Creations. We have hand-blown glass from Nicuzzie Glass Designs (Nick Fruin and Suzanne Ririe), jewelry and fiber pieces from The Fuchsia Flamingo. Hours: Tue.-Fri., 2-5pm; Sat., 10am-5pm & Sun., noon to 5pm. Contact: 336/879-2426 or at (www.carolinacrockery.com).

Chad Brown Pottery, 2719 US 220 N., Seagrove. **Ongoing** - Featuring high fired stoneware, decorative and functional with ash and alkaline glazes, by Chad Brown. Hours: Mon.-Sat., 10am-5pm. Contact: 910/571-1691 or e-mail at (chadcameronbrown@yahoo.com).

Chris Luther Pottery, 4823 Busbee Rd., Seagrove. **Ongoing** - Featuring contemporary and functional pottery by Chris Luther, a 4th generation potter of Seagrove's Chriscoe pottery family. Hours: Tue.-Sat., 10am-5pm. Contact: 336/301-3254 or at (www.chrislutherpottery.com).

Chrisco Pottery, 1360 Hwy. 705, Seagrove. **Ongoing** - Featuring functional pottery including tableware, vases, and large platters. Hours: Mon.-Sat., 10am-5pm (Sept.-Dec.) & Tue.-Sat.,

continued on Page 60