

Veronique Aniel, Melissa Breeland, Mary Ann Bridgman, Renee Bruce, Beverly Brunswig, Wilma Cantey, Carole Carberry, Linda Churchill, Christine Crosby, Judy Jacobs, Alix Kassing, Jennifer Koach, Tug Mathisen, Yvonne Rousseau, Suzy Shealy, Coleen Stioff, and Tom Tremaine. Hours: Mon.-Sat., 10am-5pm & Sun. noon-5pm. Contact: 843/723-9172 or at ([www.courtyardartgallery.com](http://www.courtyardartgallery.com)).

**Dog & Horse**, Fine Art and Portraiture, & Sculpture Garden, 102 Church St. Charleston. **Ongoing** - The gallery represents artists nationally and internationally recognized as leading talent in both equine and canine art. Along with exquisite fine art, the gallery also offers individualized assistance to ensure the most suitable artist for a custom portrait. Hours: Mon.-Fri., 10am-5pm & Sat., 11am-5pm. Contact: 843/577-5500 or at ([www.dogandhorsefineart.com](http://www.dogandhorsefineart.com)).

**East Bay Garden Gallery**, 114 E. Bay St., in Coates Row, near Rainbow Row, Charleston. **Ongoing** - Artist and owner, W. Hampton Brand provides a unique and more complete "Charleston experience" with his art. His primary subject is the significant architecture and beautiful historic buildings of our city. For those who seek the ultimate Charleston keepsake - he puts his art on the increasingly rare artifacts of historic roofing slate and old handmade Charleston brick. In addition to his art, you're invited to browse among the eclectic garden finds in the courtyard including old gates, statuary, pottery, unique iron pieces and so much more. Hours: Mon.-Sun., 9am-2pm. Contact: 843/958-0490 or 843/327-6282.

**Edward Dare Gallery**, 31 Broad Street, between Church & State Sts., Charleston. **Ongoing** - Featuring a variety of original works by established artists who have studied with masters of their fields. Painting styles include abstracts, figurative works, landscapes and architectural pieces. In addition to the broad range of paintings, this gallery also offers an exquisite collection of photography, select jewelry, unique works in wood, contemporary porcelain and figurative sculpture. Featuring paintings by Jim Darlington, Beth McLean, Leslie Pratt-Thomas, Ann Lee Merrill, Roberta Remy, Rich Nelson, Anita Louise West, Kathy Sullivan, Michael Patterson, Madeline Dukes, Douglas Grier, Sally Cade, Roberta Remy, Holly Reynolds, and Patricia Madison Lusk. Hours: Mon.-Fri., 11am-5pm, & Sun. by appt. Contact: 843/853-5002 or at ([www.edwarddare.com](http://www.edwarddare.com)).

**Elizabeth Carlton Studio**, 85 Wentworth Street, corner of St. Philip and Wentworth St., Charleston. **Ongoing** - Featuring the whimsical, vibrant and playfully designed pottery of Elizabeth Carlton. Hours: Mon.-Sat., 10am-5pm. Contact: 843/853-2421 or at ([www.elizabethcarlton.com](http://www.elizabethcarlton.com)).

**Ella Walton Richardson Fine Art Gallery**, 58 Broad St., Charleston. **Ongoing** - Featuring oil paintings by Simon Balyon, Roger Dale Brown, Evgeny & Lydia Baranov, Johannes Eerdmans, Gerard Ernens, Hennie de Korte, Lynn Gertenbach, Lindsay Goodwin, Frits Goosen, Willem Heytman, Rene Jansen, Stapleton Kearns, Zin Lim, Janny Meijer, Joan Miro, Scott Moore, Craig Nelson, J. Christian Snedeker, George Speck, Aleksander Titovets, Lyuba Titovets, Niek van der Plas, Frans van der Wal, Gert-Jan Veenstra, HyeSeong Yoon. Bronze sculpture by world-renowned Dutch artist Marianne Houtkamp, jewelry by Chicago-based designer Amy Lenzi and photography by Ella Richardson. Hours: Mon.-Sat., 10am-5pm. Contact: 843/722-3660 or at ([www.ellarichardson.com](http://www.ellarichardson.com)).

**Ellis-Nicholson Gallery**, 1.5 Broad St., Charleston. **Ongoing** - Paintings by Victoria Platt Ellis, Jeannette Cooper Nicholson, Brian Scanlon and Robert M. Sweeney. Also representing sculptors Alex Palkovich and John Douglas Donehue, Jr.; jewelry designers Rebecca Johnston and Carole McDougal; potter Mary Nicholson and glass blower Michael Barnett. Hours: Mon.-Sat. 11am-6pm or by appt. Contact 843/722.5353 or at ([www.ellis-nicholsongallery.com](http://www.ellis-nicholsongallery.com)).

**Eva Carter's Studio**, 6 Gillon Street, Charleston. **Ongoing** - Offering the bold abstract expressionist oil paintings of Eva Carter. Hours: by appt. only. Contact 843/478-2522 or at ([www.evacartergallery.com](http://www.evacartergallery.com)).

**Fire & Earth: Fine Pottery**, 1417 Ashley River Rd., Charleston. **Ongoing** - Featuring original work by gallery owner Kris Neal, and the Charleston area's most comprehensive pottery classes. Hours: Mon.-Sat., 10am-6pm. Contact: 843/766-2776 or at ([www.fireandearthpottery.com](http://www.fireandearthpottery.com)).

**Gallery Chuma**, 43 John Street, across from the Visitor's Center, Charleston. **Ongoing** -

"African American Works on Paper," featuring master artists Jacob Lawrence and Romare Bearden, as well as renowned artist Jonathan Green. Hours: Mon.-Sat., 10am-6pm.; Sun., 1-6pm. Contact: 843/722-8224.

**Gaye Sanders Fisher Gallery**, 124 Church St., Charleston. **Ongoing** - Featuring original oil and watercolor paintings by Gaye Sanders Fisher. Hours: Mon.-Sat., 10am-5pm; Sun. 1-5pm. Contact: 843/958-0010 or at ([www.gayesandersfisher.com](http://www.gayesandersfisher.com)).

**Gordon Wheeler Gallery**, 180 East Bay Street, Charleston. **Ongoing** - Original paintings and limited edition prints of golf, lowcountry landscapes and Charleston scenes by Gordon Wheeler. Hours: Mon.-Sat., 10am-6pm; Sun. 11am-4pm. Contact: 843/722-2546.

**Hagan Fine Art Gallery & Studio**, 27 1/2 State St., Charleston. **Ongoing** - Featuring works by Karen Hewitt Hagan. Hours: Tue.-Sun., 11am-5pm. Contact: 843/754-0494 or at ([www.HaganFineArt.com](http://www.HaganFineArt.com)).

**Hamlet Fine Art Gallery**, 7 Broad St., close to the Old Exchange building, Charleston. **Ongoing** - For the savvy collector, we feature original artwork by exclusive award-winning artists, Kellie Jacobs (pastels); Tim Greaves, Melinda Lewin, and Jennifer Black (Oils); Caroline Street Trickey (watercolors); Stephanie Shuler Hamlet (mixed media abstracts); Bill Campbell and Ken Folliet (flambeaux art pottery) and Mark Woodward and Charles Smith (whimsical and realistic sculptures). Hours: Mon.-Thur., 11am-5 pm; Fri.-Sat., 11am-6pm or by appt. Contact: 843/722-1944 or at ([www.Hamletgallery.com](http://www.Hamletgallery.com)).

**Helena Fox Fine Art**, 106-A Church Street, Charleston. **Ongoing** - Featuring works by West Fraser, Johnson Hagood, Margaret M. Peery, Julian Davis, and Craig Crawford, along with the stable of artists Helena Fox Fine Art continues to represent including: Sarah Amos, Kenn Backhaus, John Budicin, Terry DeLapp, Donald Demers, Mary Erickson, Joseph McGurl, Billyo O'Donnell, Joseph Paquet, and Kent Ullberg. Hours: Mon.-Sat., 11am-5pm or by appt. Contact: 843/723-0073 or at ([www.helenafoxfineart.com](http://www.helenafoxfineart.com)).

**Horton Hayes Fine Art**, 30 State St., Charleston. **Ongoing** - Featuring marshscapes and Lowcountry images of shrimpers, crabbers, clambers, and oyster harvesters in oils and acrylics by Mark Horton. Also works by Nancy Hoerter, Shannon Runquist, Bjorn Runquist and Chris Groves. Hours: M.-Sat., 10am-5:30pm & Sun., 12:30-5pm. Contact: 843/958-0014 or at ([www.hortonhayes.com](http://www.hortonhayes.com)).

**Imaging Arts Gallery**, 175 King Street, between Clifford and Queen, Charleston. **Ongoing** - A unique showcase of photography including LeCroy's vastly enlarged leaves, plants, and flowers - a culmination of photography and technology, as they reveal detail and color that is beyond the reach of the unaided eye. The fine art photography contains a selection of cityscapes, black and whites, international architecture, and others. Unique framed pieces that combine 19th century daguerreotypes, ambrotypes, and tintypes with enlarged images will delight history enthusiasts. LeCroy's photographs are additionally on exhibit at the New York Hall of Science, New York. Hours: Mon.-Sat., 10am-6pm & Sun., 2-5pm. Contact: 843/577-7501 or at ([www.imagingarts.com](http://www.imagingarts.com)).

**Indigo Fine Art Gallery**, 102 Church St., Charleston. **Ongoing** - Featuring artwork by Helen K. Beacham, Paula Lonneman and Judith Perry, along with handblown glass seashells, raku pots and the work of special guest artists throughout the year. Stop by and see works-in-progress as well, since the artist/owners are always there & probably painting! Hours: Mon.-Sat., 10am-5pm. Contact: 843-805-9696 or at ([www.IndigoFineArtGallery.com](http://www.IndigoFineArtGallery.com)).

**Julia Santen Gallery**, 188 King Street, Charleston. **Ongoing** - Offering original vintage poster art, encompassing the Belle Epoque, Art Nouveau, Art Deco and Contemporary eras. Hours: open mostly, closed sometimes and by appt. Contact: 843/534-0758 or at ([www.juliasantengallery.com](http://www.juliasantengallery.com)).

**Lime Blue**, 62-B Queen Street, in Blink!'s old space, Charleston. **Ongoing** - Featuring works by Susan Aving, Mary Edna Fraser, Matt Overend, Lynn Riding, Mary Walker, and Jeff Kopish. Hours: Wed.-Sat., 10am-5pm. Contact: 843/722-1983 or at ([www.shoplimeblue.com](http://www.shoplimeblue.com)).

**Lowcountry Artists Ltd**, 148 E. Bay St., Charleston. **Ongoing** - Featuring works by Denise Athanas, Carolyn Dubuque, Lynda English, Carolyn Epperly, Lynne N. Hardwick, Rana

Jordhal, and Jackie Wukela. Hours: Mon.-Sat., 11am-5pm & Sun., 1-5. Contact: 843/577-9295 or at ([www.lowcountryartists.com](http://www.lowcountryartists.com)).

**M Gallery of Fine Art SE**, 11 Broad St., Charleston. **Aug. 4 - 31** - "Pastorals and Portraits," featuring a duo exhibition featuring the work of Ken Pledger and Kevin Menck. A reception will be held Aug. 5, from 5-8pm. **Ongoing** - Representing artists whose work reflects the major cultural shift occurring in the art world today, with painters following the mandate of Fred Ross, (Chairman of the Art Renewal Center) to a "dedication to standards of excellence both in training and in artistic execution, and a dedication to teaching and learning with great discipline and devotion, to the methods, developments and breakthroughs of prior generations". Hours: Mon.-Sat., 10am-6pm & Sun., 11am-4pm. Contact: 843/727-4500 or at ([www.mgalleryoffineart.com](http://www.mgalleryoffineart.com)).

**Mary Martin Gallery of Fine Art**, 39 Broad St., Charleston. **Ongoing** - Featuring original art in a variety of media by: Fletcher Crossman, Jean Claude Gaugy, Richard Pankratz, Barbara McCann, Cary Henrie, Philippe Guillem, Gilles Payette, Douglass Freed, Kathleen Earthrowl, Randall LaGro, Gwen Fox, Cindy Drozda, David Nittmann, Martin Eichinger, Gregory Beck, Chad Awalt, Alessandro Casson, Barbara Westwood, Michael Sugarman, Jim Pittman, Gloria Coker, Corey Scott Fisher, Bob Ichter, Norman Cable, Barbara Dave, Mariya Zvonkovich, Arleta Pech, Ed Klink, Art Valero, David Datwyler, Robin Daniels, Don Quade, John Sherman, Densaburou Oku, Cheryl Abbe Lorange, Andi Wolfe, Ron Artman, Jerry Rhodes, Pat Kramer, Jason Antol, William Brian Hibbard, Benoit Averly, Jan Jacque, Michael Downs, and others. Hours: Mon.-Sat., 10am-5pm & Sun. noon-5. Contact: 843/723-0303 or at ([www.MaryMartinART.com](http://www.MaryMartinART.com)).

**Martin Gallery**, 18 Broad Street, ground floor of the Peeople's Building, corner of Broad and State Streets, Charleston. **Ongoing** - Featuring paintings by Mitch Billis, Kathleen Billis, Italian master Imero Gobbato, William Crosby, Christopher Schink, Jennifer Spencer, Jared Clackner, and Gilles Charest; sculpture by Leo Osborne, Claire McArdle, and James R. Pyne; and photography by Michael Kahn. Also, offering select jewelry and glass art by America's best artisans, featuring custom designs by acclaimed master goldsmith Glade Sarbach Davis. Hours: Mon.-Sat., 10am-6pm; Sun., 1-5pm & by appt. Contact: 843/723-7378 or at ([www.martingallerycharleston.com](http://www.martingallerycharleston.com)).

**McCallum - Halsey Gallery and Studios**, 20 Fulton St., Charleston. **Ongoing** - Featuring a changing mix of work by two of the southeast's foremost artists, Corrie McCallum and William Halsey. Including paintings, graphics, and sculptures for the discerning collector. Hours: by appt. only. Contact: 843/723-5977 or at ([www.halseyfoundation.org](http://www.halseyfoundation.org)).

**Mickey Williams Studio-Gallery**, 132 E. Bay St., corner of East Bay and Broad Charleston. **Ongoing** - Featuring landscape oil paintings by Mickey Williams of Lowcountry scenes. Hours: by chance. Contact: 843/724-3209 or at ([www.mickeywilliams.com](http://www.mickeywilliams.com)).

**Nina Liu and Friends**, 24 State St., Charleston. "Celebrating its 25th Anniversary". **Ongoing** - Group show by gallery artists. Hours: Mon.-Sat., 10am-5pm & Sun., noon-5pm. Contact: 843/722-2724.

**One of a Kind Art & Fine Craft Gallery**, 74 N. Market Street, Charleston. **Ongoing** - Featuring unique arts and crafts from over 400 American artists, including many local artisans. Hours: Sun.-Thur., 10am-10pm & Fri.&Sat, 10-11pm. Contact: 843/534-1774.

**People, Places, & Quilts**, 1 Henrietta Street, Charleston. **Ongoing** - Featuring fabric, books, patterns, notions, quilts and Folk Art. Hours: Mon.-Sat., 10am-5pm. Contact: 843/937-9333 or at ([www.ppquilts.com](http://www.ppquilts.com)).

**Photographics - Portrait Photography & Art Gallery**, 458 Freshfields Dr., in the Freshfields Village, Johns Island. **Ongoing** - Representing painters and photographers who exemplify the greatest ability to evoke a mood or sensory impression of a chosen subject matter. This subject matter varies and includes landscapes and still-life depictions of Lowcountry scenes as well as themes and experiences from the travels of its artists. The gallery features original works in oil, watercolor, gouache, mixed-media and fine-art photography. Representing national artists: Billie Sumner, Fred Jamar, Tammy Papa, Pam Cohen, Vickie Ellis, Aija Sterns, Elizabeth Drozeski, Sharlyne Duffy, and Michael Cyra. Hours: Mon.-Sat., 10am-6pm or by appt. Contact: 843/768-3030 or at ([www.kiawahislandphoto.com](http://www.kiawahislandphoto.com)).

**Pink House Gallery**, 17 Chalmers Street, Charleston. **Ongoing** - Florals, landscapes, wildlife and a full line of Charleston scenes, featuring works by Alice S. Grimsley, Nancy W. Rushing, Audrey D. Price, Bruce W. Krucke, and Alexandria H. Bennington. Also featuring works by Ravenel Gaillard. Hours: Mon.-Sat., 10am-5pm. Contact: 843/723-3608 or at (<http://pinkhousegallery.tripod.com>).

**Raymond Clark Gallery**, 307 King Street, Charleston. **Ongoing** - Featuring the works of over 100 regional & national artists working in every medium. Hours: Mon.-Sat., 10am-6pm. Contact: 843/723-7555.

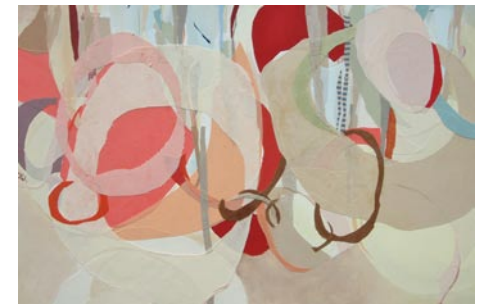
**Rebekah Jacobs Gallery**, 169-B King St., Charleston. **Ongoing** - Focusing on Southern artists and photographers who have powerful visions of the land of their birth supported by an advanced mastery of their media. The gallery maintains an accelerated exhibition schedule, non-media specific, which features one-person and group shows throughout the year. Hours: Tue.-Sat., 10am-5:30pm or by appt. Contact: 843/937-9222 or at ([www.rebekahjacobgallery.com](http://www.rebekahjacobgallery.com)).

**Reinert LePrince Fine Art**, 179 King Street, Charleston. **Ongoing** - Featuring works by local painters Rick Reinert and Kevin LePrince with works by sculptor David Turner. Hours: daily from 10am-5pm. Contact: call 843/793-4765 or at ([www.reinertleprince.com](http://www.reinertleprince.com)).

**Rhett Thurman Studio**, 241 King St., Charleston. **Ongoing** - Featuring original works by Rhett Thurman in conjunction with The Sylvan Gallery. Hours: by appt. only. Contact: 843/577-6066.

**Rick Rhodes Photography and Imaging, LLC.**, 1842 Belgrade Ave., West of the Ashley, Charleston. **Aug. 3 - 31** - Featuring an exhibit by landscape and wildlife artist Robert Horton. A reception will be held on Aug. 5, from 6-8pm. Hours: Mon.-Fri., 9am-5:30pm. Contact: 843/766-7625 or at ([www.rickrhodesphotography.com](http://www.rickrhodesphotography.com)).

**Robert Lange Studios**, 2 Queen St., Charleston. **Ongoing** - Featuring works by Ali Cavanaugh, Megan Aline, Robert Lange, Nathan Durfee, Kerry Brooks, Jessica Dunegan, Fred Jamar, Michael Moran, Amy Lind, Adam Hall, Joshua Flint, Sean Clancy, and JB Boyd. Hours: Mon.-Sun., 11am-7pm. Contact: 843/805-8052 or at ([www.robertlangestudio.com](http://www.robertlangestudio.com)).



Work by Karin Olah

**SCOOP studios**, 57 1/2 Broad St., Charleston. **Through Aug. 27** - "Unwound and Bound," featuring works by Karin Olah. A reception will be held on Aug. 5, from 5-8pm. The exhibit includes 20 new original works of art that combines Olah's two series, "floral" and "abstract". **Ongoing** - Featuring a contemporary art gallery that features a new artist each month. In between the shows, the artists are rotated on to the walls of the 10'x40' space. One sees up and coming artists that each have their own unique process and compositions throughout the gallery. Most of the artists are local, but there are a few from the region and New York. Hours: Tue.-Sat., 10am-5pm or by chance. Contact: 843/577-3292 or at ([www.scoopcontemporary.com](http://www.scoopcontemporary.com)).

**Shelby Lee Gallery**, 175 Church St., Charleston. **Ongoing** - Showcasing original works by over 20 award winning artists including oil painters Matt Constantine, J. Michael Kennedy, Deborah Pellock, Craig Reynolds, Gina Brown, Glenda Cason, glass by internationally renowned master glass artist Kyle Carni and hand forged custom jewelry by owner Shelby Parbel. We also feature fused glass, Franz porcelain and unique gifts. Hours: Gallery: Mon.-Tue., 10am-6pm and Thur.-Sat., 10am-8pm. Contact: 843/579-9725 or at ([www.shelbyleegallery.com](http://www.shelbyleegallery.com)).

**Smith-Killian Fine Art**, 9 Queen Street, corner of Queen & State Streets, Charleston. **Ongoing** - Featuring original works by Betty Anglin Smith, Jennifer Smith Rogers, Tripp Smith, Shannon Smith, Kim English, Susan Romaine, Don Stone, NA and Darrell Davis, sculptor. Hours: Mon.-Sat., 10am-5pm & Sun. 1-5pm. Contact: 843/853-0708 or at ([www.smithkillian.com](http://www.smithkillian.com)).

*continued on Page 38*