

# NC Commercial Galleries

continued from Page 64

## Wadesboro

**Olde Mill Gallery & Studios**, Lockhart-Taylor Center, 514 N. Washington St., Wadesboro. **Ongoing** - At the gallery visitors will see artwork by regional artists which includes: original paintings in oil, acrylic & watercolor, that range from landscapes to abstracts; photography; works in copper and copper repousse; ceramic creations, custom sculptured and functional; art glass jewelry, jewelry made from beads of Swarovski crystal; hand-stitched quilts of exquisite designs; hand painted goblets, pitchers and vases; wood sculptures and turnings, and more. Hours: Mon.-Thur., 10am-5pm; Fri., 10am-3pm or by appt. Contact: 704/272-5464 or at ([www.oldemillgallery.org](http://www.oldemillgallery.org)).

## Waxhaw

**Stewart's Village Gallery**, 116 McDonald St., Waxhaw. **Ongoing** - Featuring pottery by Bill Stewart, as well as works by over 300 other artists including both decorative and functional handmade pieces. The gallery is filled with pottery, jewelry, wrought iron, garden accents, decorative whimsy and so much more. Hours: Mon.-Sat., 10am-5pm & Sun., 1-5pm. Contact: 704/843-5638 or at ([www.stewartsvillagegallery.com](http://www.stewartsvillagegallery.com)).

## Waynesville

**Balsam Ridge Gallery**, 44 North Main Street, Waynesville. **Ongoing** - Fine art gallery featuring paintings of Western NC mountain vistas and beyond. Hours: daily 11am-6pm, but call ahead. Contact: 828/234-1616.

**Cedar Hill Gallery**, 196 N. Main Street, Waynesville. **Ongoing** - Featuring the art of Gretchen Clasby and 83 incredible artisans. Hours: Mon.-Sat., 10:30am-5:30pm. Contact: 828/421-6688 or at (<https://www.cedarhillstudio.com/>).

**Jo Ridge Kelly Fine Art**, a gallery and teaching studio, 136 N. Main Street, Waynesville. **Ongoing** - Featuring the painting of Jo Ridge Kelly. Hours: Thur.-Sat., noon-6pm and Sun.-Wed., by chance or appt. Contact: 828/226-0549 or at ([www.JoKelley.com](http://www.JoKelley.com)).

**Moose Crossing's Burl Wood Gallery**, 101 N. Main Street, Waynesville. **Ongoing** - Featuring rustic Burl furniture with an elegant finish. Two generations of Metzgers, source, design and craft burl. We are fortunate to have talented craftsmen working with us. It is our pleasure to coordinate efforts as a team. The focus is on the end product as an art piece. Hours: Mon.-Sat., noon-5pm or by appt. Contact: 828/452-2550 or at (<https://burlgallery.com/products/burl-wood-sculpture>).

**T. Pennington Art Gallery**, 15 N. Main Street, Waynesville. **Ongoing** - Featuring pencil drawings of local scenery, and landmarks by Teresa Pennington, including originals, prints and gift items. Also framing is available. Hours: Mon.-sat., 10am-5pm. Contact: 828/452.9284 or at ([www.tpennington.com](http://www.tpennington.com)).

**The Jeweler's Workbench**, 80 N. Main St., Waynesville. **Ongoing** - Specializing in fine hand-crafted jewelry, custom design and repair, limited edition watches and jewelry boxes. Featuring award-winning artists of the Great Smoky Mountains and from across the country. Hours: Mon.-Sat., 10am-5:30pm. Contact: 828/456-2260.

**Twigs & Leaves**, 98 N. Main Street, Waynesville. **Ongoing** - Featuring the nature-related porcelain works with leaves by Kaaren Stoner, as well as other works by regional artists and craftsmen. Hours: Mon.-Sat, 10am-5:30pm. Contact: 828/456-1940 or at ([www.twigsandleaves.com](http://www.twigsandleaves.com)).

## Weaverville

**Mangum Gallery**, 16 North Main Street, Weaverville. **Ongoing** - Featuring functional and decorative pottery dinnerware. Hours: Mon.-Fri., 9am-5pm and Sat., 10am-4pm. Contact: 828/645-4929 or ([www.mangumpottery.com](http://www.mangumpottery.com)).

**Miya Gallery**, 31 N. Main St., Weaverville. **Ongoing** - The gallery is a new and refreshing addition to the WNC art scene. We exhibit work of over 50 artists: fine jewelry, clay, wood, glass, metal, fiber, photography and two dimensional art. Hours: Tue.-Fri., 10am-6pm; Sat., 10am-5pm & Sun., noon-4pm. Contact: 828-658-9655 or at ([www.miyagallery.com](http://www.miyagallery.com)).

## West Jefferson/Jefferson

**Acorn Gallery**, 103 Long St., West Jefferson. **Ongoing** - Featuring original works by award

winning and nationally exhibited artist Raney Rogers, including wildlife and landscape paintings and prints. Hours: Tue.-Fri., 11am-5pm & Sat., 11am-2pm. Contact: 336/246-3388 or at ([www.acorngallery.com](http://www.acorngallery.com)).

**Ashe Custom Framing & Gallery**, 105 S. Jefferson Ave., West Jefferson. **Ongoing** - Featuring a varied selection of originals and prints by local and regional artists. Also, a wide array of pottery and handcrafted wooden vases. Hours: Tue.-Fri., 10am-5pm & Sat., 10am-2pm. Contact: 336/246-2218.

**Broomfields Gallery**, 414 E. 2nd St, (across from the post office), West Jefferson. **Ongoing** - Featuring an exhibition of works by NC and SC artists in various mediums in a setting of quality antiques. Hours: Tue.-Sat., 11am-5pm. Contact: 336/846-4141 or at ([www.broomfieldsgallery.com](http://www.broomfieldsgallery.com)).

**CatchLight Gallery**, 118 N Jefferson Avenue, West Jefferson. **Ongoing** - The CatchLight gallery is dedicated solely to the art of photography. In the Spring of 2012, photographer Nicole Robinson decided to create a space where talented photographers would have an opportunity to display and sell their work. A beautiful gallery space grew from a dream into a wonderful reality, evolving into a haven which became available to both the photographers and the viewing public in the arts district of downtown West Jefferson, NC. Hours: Mon., Thur., Fri., & Sat., 11am-5pm & Sun., 11am-4pm. Contact: 336/846-1551 or at ([www.CatchLightGallery.net](http://www.CatchLightGallery.net)).

**Prack Studio / Sculpture Garden**, 431 Sunnyside Park Road, Jefferson. **Ongoing** - Featuring sculptures by Mary-Ann Prack. Hours: open by appt only. Contact: 828/406-7046 or at ([www.prackart.com](http://www.prackart.com)).

**Stephen Shoemaker Studio**, 113 S. Jefferson Ave., West Jefferson. **Ongoing** - Featuring original works by watercolorist Stephen Shoemaker. Specializing in historic landscapes and paintings of places and events in/of Ashe County and the area. The "Virginia Creeper" train series is particularly popular. Hours: Mon-Fri., 10am-5pm or by chance. Contact: 336/246-3401.

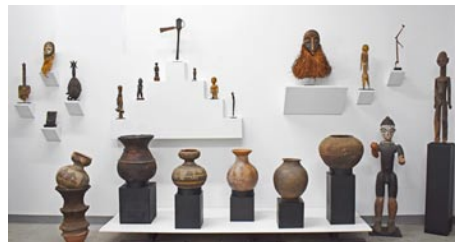
## Wilmington

**Acme Art Studios**, 711 N. 5th Ave., downtown Wilmington. **Ongoing** - Featuring works by Cass Baes, Gary Breece, Todd Carignan, Karen Paden Crouch, MJ Cunningham, Dumay Gorham, Amy Grant, Stephanie Holt, Fritz Huber, Marshall Milton, Trey Moore, Allan Nance, Dick Roberts, Angela Rowe, Angie Sinclair, Pam Toll, Michael Van Hout, Mark Weber, and Katherine Wolf Webb. Hours: Every 4th Friday Night, 6-9pm and by appt. Contact: Amy Grant e-mail at ([grantamyn@gmail.com](mailto:grantamyn@gmail.com)), call 910/805-8424, or (<https://www.facebook.com/acmeartstudios>).

**Art In Bloom Gallery**, 210 Princess Street, downtown Wilmington. **Through July 9** - "Visual INTROspection," featuring photography by WAZgriffin. **Through July 9** - "Primordial Lines," featuring works by Brian Evans and Kirah van Sickle. **Ongoing** - The gallery focuses upon original art and includes national and local favorites such as Karen Paden Crouch (sculpture), Jeri Greenberg (pastel on paper), Elizabeth Darrow (paintings), Brian Evans (ceramic art), Helen Lewis (encaustic), Traudi Thornton (ceramic art), and Roberto Vengoechea (jewelry). Different artists are featured every 6 weeks along with an ongoing display of new art from the gallery's 40 core artists at (<https://aibgallery.com/artists/>). Online and in the gallery, visitors will find a mixture of traditional and contemporary paintings, drawings, photography, sculpture, jewelry, ceramics, fabric, and objects found during the renovation of the building such as barn walls, horseshoes, bottles, and ballast stones (c.1739-1920). Hours: Mon.- Thur., 10am-4pm; Fri. & Sat., 10am-5pm; and by appt. 7 days a week. Call 484/885-3037 (mobile) or visit (<https://aibgallery.com/>).

**Beck Fine Art**, 545 Castle Street, Wilmington. **Ongoing** - features some of the best in national talent for representational and abstract art. Being the main gallery and home of award-winning artist, Dan Beck, the gallery not only represents some of Dan's best work but other artists with exceptional talent and accomplished art careers. Hours: Tue.-Sat., 11am-5pm. Contact: 910/264-2392 or at ([www.beckfineart.com](http://www.beckfineart.com)).

**Bottega Art & Wine Gallery**, 208 N. Front St., Wilmington. **Ongoing** - Featuring works by regional and international artists in a variety of media. Hours: Tue.-Wed., 1-10pm and Thur.-Sat., 1pm-midnight. Contact: 910/763-3737 or at ([www.bottegageallery.com](http://www.bottegageallery.com)).



Works from Charlie Jones African Art

**Charles Jones African Art**, 311 Judges Road, Unit 6-E, Wilmington. **Ongoing** - A gallery dedicated to the traditional arts of West and Central Africa, with over 35 years experience in building fine collections for collectors and museums. Inquiries are welcome. Consultation, research and appraisal services available for individuals, estates and institutions by ISA certified appraiser, Maura Kropke. Exhibitions arranged and curated with essays by major scholars. Hours: Mon.-Fri., 7:30am-4:30pm. Contact: 910/794-3060 or at ([charlesjonesafricanart.com](http://charlesjonesafricanart.com)).

**ERA 20th Century Furniture and Art Gallery**, 523 South 3rd St., Wilmington. **Ongoing** - Inviting emerging artists of all sorts, to fill the quiet space with cutting edge art that not only is pleasant to view, but also thought-provoking. Unique modern furnishings from the mid-20th century complement the contemporary art. Hours: Wed.-Sat., 11am-5pm or by appt. Contact: 910/612-0542.

**Gallery Citrine**, 17 S 2nd Street, Wilmington. **Ongoing** - Featuring works by BJ Grimmer, PD Chisholm, Kathy Schrum Peck, Nancy Lang Miller, Brooke Eagle, Deb Williams, Meroe Wheatley, Sue Cunningham, Chris Pfund, Donna Launey, and Robin Jones. Hours: Thur.-Sat., 11am-6pm or by appt. Contact: e-mail to ([gallerycitrine@gmail.com](mailto:gallerycitrine@gmail.com)) or at (<https://gallerycitrine.com/>).

**Janet B. Sessoms Studio@ the ArtWorks**, 200 Willard Street, Wilmington. **Ongoing** - Featuring works by Janet B. Sessoms. Hours: call for hours. Contact: 910/840-0208, e-mail at ([jsessoms47@ec.rr.com](mailto:jsessoms47@ec.rr.com)) or at ([www.janetb-sessoms.com](http://www.janetb-sessoms.com)).



Work by Bruce Bowman

**New Elements Gallery**, 271 North Front Street, Wilmington. **Through July 15** - "Macro/Micro," featuring new work by BF Reed and Sally Sutton. **Ongoing** - Featuring works by regional and nationally recognized artists. We offer a wide variety of contemporary fine art and craft, including paintings, sculpture, ceramics, glass, fiber, jewelry and wood. Hours: Tue-Sat., 11am-6pm or by appt. Contact: 910/343-8997 or at ([www.newelementsgallery.com](http://www.newelementsgallery.com)).

**Port City Pottery & Fine Crafts**, at The Cotton Exchange, 307 North Front Street, Wilmington. **Ongoing** - Celebrating ten years in business, Port City Pottery & Fine Crafts, in the historic Cotton Exchange in downtown Wilmington, is the first gallery in Wilmington dedicated exclusively to local, handmade, one-of-a-kind, three-dimensional art and craft by jury-selected coastal North Carolina artisans. We present decorative and functional works in clay, fiber/textiles, gourds, baskets, jewelry, mixed media, glass and wood

in a beautiful setting in this early 20th century historic building. Handmade objects, whether held, worn, or displayed, enrich our lives by connecting us with our humanity, creativity, and our history. It is evident when you enter Port City Pottery & Fine Crafts that all of the Gallery members are pursuing not only art but their passion. Hours: Mon-Sat., 10am-5:30pm & Sun. noon-4pm. Contact: 910/763-7111 or at ([www.portcitypottery.com](http://www.portcitypottery.com)).

**The Art Factory**, 21 Surry Street, Wilmington. **Ongoing** - We are located in the warehouse district on the edge of beautiful Historic Downtown Wilmington, North Carolina. In addition to our retail galleries, the Art Factory Gallery houses a number of studios for working artists and a Wine Bar featuring distinctive Yadkin Valley North Carolina wines, available by the glass while you enjoy the galleries. Hours: call about hours. Contact: 910/399-3793 or visit (<https://www.facebook.com/ArtFactoryGallery/>).

**The ArtWorks**, 200 Willard Street, Wilmington. **Gallery Verrazzano, Ongoing** - In Gallery Verrazzano, we feature all the art created by the ArtWorks™ Artists and visiting Artists. The gallery features different mediums throughout the gallery! You are free to walk around and admire or even purchase the art work around the gallery. **Ongoing** - The ArtWorks is an art village providing art studios, gallery space, and an event venue; fostering a creative environment for artists, educational opportunities, and enhancement of the Wilmington community, through art. Our Mission is to enhance the community, assist the artist, contribute to the revitalization of downtown Wilmington, to preserve Wilmington's commercial landmarks, and to increase the livelihood of local artists and provide a place to create and display all types of art. Hours: 2nd & 4th Saturdays, 10am-3 or by appt. Contact: 910/352-7077 or at (<http://www.theartworks.co/>).

**The Golden Gallery**, @ The Cotton Exchange, 307 N. Front St., Wilmington. **Ongoing** - Featuring works by John W. Golden and Mary Ellen Golden. Hours: Mon.-Sat., 10am-5:30pm & Sun., 1-4pm. Contact: 910/762-4651 or at ([www.thegoldengallery.com](http://www.thegoldengallery.com)).

**WATER + COLOR GALLERY**, 204 Arcadian Row, Suite 120, in Marina Village, alongside the Cape Fear River, Wilmington. **Ongoing** - Owned and operated by Susan Buteau, the gallery features works by artists who are mostly local to the Wilmington area. Hours: Wed.-Sun., noon-6pm. Contact: 910/833-5393 or at (<http://www.waterpluscolorgallery.com>).

## Winston-Salem Area

**Downtown Arts District**, Sixth and Trade streets, Winston-Salem. **July 1** - "DADA First Friday Gallery Hop," with special artist demonstrations, art exhibits, and shops and studios open evening hours. Events are free and open to the public. Gallery Hops are funded and sponsored by the Downtown Art District Association, a non profit organization, and their supporting membership. Contact: 336/722-2345.

**Delurk Gallery**, 207 W 6th Street, Winston-Salem. **Ongoing** - An artist run gallery, dedicated to the exposure and sale of current artists' work. Hours: Fri.-Sat., noon-6pm & Sun., noon-4pm. Contact: 336/486-3444 or at ([www.delurkgallery.com](http://www.delurkgallery.com)).

**Earthbound Arts**, 610 N. Trade St., Winston-Salem. **Ongoing** - Featuring an unique gallery showcasing the nature-related works of Gordon Jones and Lucy Duncan. Original designs in clay, copper, and stained glass as well as handcrafted herbal soaps, sterling and copper jewelry, block print cards, masks, wind chimes, garden art, clay beads, herbal teas, natural incense, beeswax candles and much more. Hours: Tue.-Sat., 11am-6pm. Contact: 336/773-1043 or e-mail at ([lucy@earthboundarts.com](mailto:lucy@earthboundarts.com)).

**Fiber Company**, 600 N. Trade Street, Winston Salem. **Ongoing** - Fiber Company is a working studio and partnership of five women creating wearable art, home accessories and textile art located in the heart of the Downtown Art District. With over 60 consignment artists, most local artists, Fiber Company offers a wide range of gift items. Hours: Tue., 11am-3pm; Wed.-Fri., 11am-5pm; Sat., 11am-3pm & by appt. Contact: 336/725-5277 or e-mail at ([fibercompany@gmail.com](mailto:fibercompany@gmail.com)).

**Island Arts On Trade**, 521 N. Liberty St., Ste. 100, in the Artists On Liberty Building, across from the DADA Community Center, Winston-Salem. **Ongoing** - Featuring visual and functional artwork by gallery artist, Gary Campbell. Also, featuring other multicultural artists and mixed media artwork throughout the year. Hours: Fri.-Sat., 1-5pm or by appt. Contact: 336/722-0510.

continued on Page 66