

# NC Institutional Galleries

continued from Page 51

lived in Charlotte, NC for more than 30 years. He creates surrealist art, and is an art instructor at Carolina Piedmont Community College. Lexington, NC-born Marcus Hamilton has been illustrating the nationally-syndicated daily "Dennis the Menace" cartoon panel from his studio in Mint Hill, for the past 27 years. Originally created by cartoonist Hank Ketchum, "Dennis the Menace" just celebrated 70 years in March. The oldest of five by her working-class Puerto Rican and Cuban parents, Natacha Sochat was born in New York City, and currently resides in Raleigh, NC. Sochat's education is an interesting juxtaposition of medicine and art, leading her to a career in emergency medicine, while also painting full time and raising a family! **Ongoing** - At Waterworks, all exhibitions are free to see (donations gladly accepted). The galleries and Museum Store are open Monday-Friday, 10 am-4 pm. An elevator, braille signage, bench seating in all galleries, and wide hallways make the museum accessible to everyone. Visitors can experience the gated sensory garden, as well as sculpture gardens around the building. Waterworks offers three rotating exhibitions a year, K-12 Student exhibitions, and art classes for students ages 18 months to 100. Keep abreast of exhibitions, events, art classes, and new art for sale in the Museum Store. Hours: Mon.-Fri., 10am-4pm, (business hours M-F, 9 am-5 pm). Contact: 704/636-1882 or at ([www.waterworks.org](http://www.waterworks.org)).

## Seagrove Area

**Carolina Bronze Sculpture Garden**, Carolina Bronze, 6108 Maple Springs Road, Seagrove. **Ongoing** - The Carolina Bronze Sculpture Garden is a natural and landscaped area overlooking a beautiful 1.25 acre pond. A walking trail loops around the pond with benches and a picnic area along the trail. The Sculpture Garden collection consists of donated and loaned sculptures from emerging and established artists working in all 3D media suitable for the outdoors. There are currently 19 sculptures installed around the pond. The landscaped and natural areas have a focus on NC native plants and trees. As an extension of this park, a sculpture is installed in the downtown area of Seagrove. Hours: Mon.-Fri., 8:30am-4pm. Contact: 336/873-8291 or at ([www.cbsculpturegarden.com](http://www.cbsculpturegarden.com)).

**Seagrove Area Pottery Center (Not the NC Pottery Center)**, 122 E. Main St., Seagrove. **Ongoing** - The former museum organization was founded twenty-five years ago in Seagrove, and is dedicated to preserving and perpetuating the pottery tradition. We strive to impart to new generations the history of traditional pottery and an appreciation for its simple and elegant beauty. A display of area pottery is now offered in the old Seagrove grocery building. Hours: Mon.-Sat., 9:30am-3:30pm. Contact: 336/873-7887.

**North Carolina Pottery Center**, 233 East Avenue, Seagrove. **Ongoing** - Featuring permanent and changing exhibits on the history of North Carolina pottery, "The North Carolina Pottery Tradition" and "Seagrove Area Pottery". The Center also offers information on activities, maps and information about the potteries located in the Seagrove area and across the state. A display of representative works from more than 90 area potteries is also offered. Hours: Tue.-Sat., 10am-4pm. Contact 336/873-8430 or at ([www.ncpotterycenter.org](http://www.ncpotterycenter.org)).



STARworks Glass at work creating

**STARworks Center for Creative Enterprise**, 100 Russell Drive, just seven miles south of Seagrove in Star. STARworks is a project of Central Park NC, a 501-(c)(3) not for profit organization based in rural central North Carolina. The mission of CPNC is to grow a new rural economy based on the sustainable use of the natural and cultural resources of the region. **STARworks Businesses: STARworks Glass** is a public access glass studio that offers rental space for glass artists, classes and workshops for the general public, a resident artist and internship program, and high school and college glass curriculum. In addition to fundraisers like our Pumpkin Patch and Holiday Ornament Sale, STARworks Glass also holds free demonstrations on the second Thursday of each month at Hot Glass Cold Beer. **STARworks**

**Ceramics** uses native NC wild clays to produce clay bodies that are manufactured with a filter press on site. We also sell pottery supplies and equipment. In addition to our STARworks clays, we offer both Highwater and Standard clays, and tools and equipment from Shimpo, Cone Art Kilns, Mudtools, AMACO, Kemper Tools and Orton. **STARworks Clay Studio** offers a residency program for ceramic artists. Our facilities allow for large workshop spaces placed side by side, supporting a collaborative and energetic educational environment. In addition to the residency program, STARworks Clay studio offers classes and workshops for adults. STARworks is also home to **Wet Dog Glass**, the most trusted and dependable equipment maker and consultant for glass artists and craftspeople worldwide. **School House Gallery, Ongoing** - The gallery is filled with a selection of works from artists and artisans alike, bringing hand crafted wares into a new light. From one of a kind tableware crafted from locally mined clay paired with handwoven placemats, to simple yet elegant glass goods designed with our utilitarian ideals in mind, our functional collections are a must have for any home. Our gallery also features a selection of sculptures that gray the lines between want and need. Whether your desire is to capture an experience with one of our artists or our team, decorate your home with memories of your travels, or to treat yourself and others to a unique handmade gift, we have something for everyone to make your time here unforgettable. Gallery Hours: Mon.-Sat., 9am-5pm. **STARworks Café & Taproom** - Featuring Espresso, Iced & Frozen Coffee, Coffee, Tea, Cocoa, Smoothies, Beer & Wine, Soda, Bottled Water, Snapple, Snacks, and Pastries. And, live music some nights - visit (<https://www.starworksn.org/caf-taproom>) for the schedule. Hours: Mon.-Wed., 8am-9pm & Thur.-Sat., 8am-10pm. STARworks General Hours: Mon.-Sat., 9am-5pm. Contact: call 910/428-9001 or at ([www.starworksn.org](http://www.starworksn.org)).

## Siler City

**North Carolina Arts Incubator Gallery**, 223 N Chatham Ave., Siler City. **Ongoing** - Featuring the handcrafted work of over 30 Incubator and regional artists in a variety of mediums including painting, pottery, stained and fused glass, fabric art, cards, photography, wood, jewelry, metal, baskets and more. There is a broad range of items and prices. Hours: Mon.-Sat., 10am-5pm; & 3rd Fri., 10am-9pm. Contact: 919/663-2072 or at ([www.ncartsincubator.org](http://www.ncartsincubator.org)).

**PAF Gallery**, 223 N Chatham Ave., Siler City. **Ongoing** - A gallery featuring works by local and regional artists. Hours: 3rd Fri. 6-9pm. Contact: 919/663-2072 or at ([www.ncartsincubator.org](http://www.ncartsincubator.org)).

## Southport

**Franklin Square Gallery**, 130 E. West St., Southport. **July 26 - Aug. 21** - "Associated Artists of Southport 2021 Summer Regional Art Show". **Ongoing** - Works by members of the Associated Artists of Southport. Hours: Mon.-Sat., 10am-5pm. Contact: 910/457-5450 or at ([www.franklinsquaregallery.com](http://www.franklinsquaregallery.com)).

## Spruce Pine

**TRAC Arts Center**, Toe River Arts Council, 269 Oak Avenue, Spruce Pine. **Through July 24** - "Two Generations: Ken and Galen Sedberry." **Owen Gallery, July 10 - Aug. 14** - "Fresh Produce". **Ongoing** - Toe River Arts will feature artist demonstrations and continue to sell artist's work in the gift shop. Hours: Tue.-Sat., 10:30am-5pm. Contact: 828/682-7215 or at ([www.toeriverarts.org](http://www.toeriverarts.org)).

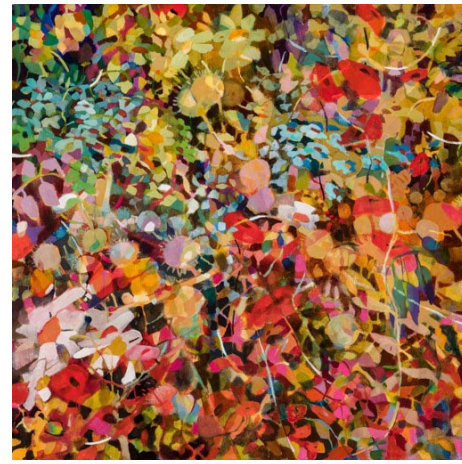
## Sylva

**Gallery One**. Home of the Jackson County Visual Arts Association, 604 West Main Street, Sylva. **Ongoing** - The gallery is home to over 20 artists local to the area. Gallery 1 is a not for profit gallery operated as a club to provide a space for professional and emerging artists to share their artistic endeavors, display works sold to help support their vocation. Hours: Thur.-Fri., 11am-3pm and Sat., noon-4pm. Contact: Tim Lewis 828/337-3468 or James Smythe 828/507-4248.

## Tryon

**Tryon Arts and Crafts School**, 373 Harmon Field Rd., in the old Tryon Middle School, Tryon. **Gallery, July 16 - Sept. 3** - "Origin Stories II: Annual TACS Member Exhibition". A reception will be held on July 16, from 6-8pm. **Gift Shop, Ongoing** - Gift Shop features juried works by regional artisans to selected work pro-

duced by our instructors and students. Hours: Mon.-Fri., 9am-5pm & Sat. 9am -1pm. Contact: 828/859-8323 or at ([www.tryonartsandcrafts.org](http://www.tryonartsandcrafts.org)).



Work by Jean Cauthen

**Upstairs Artspace**, (Celebrating 40 Years) 49 South Trade Street, Tryon. **July 3 - Aug. 13** - "Timely Traditionalism", featuring works by Jean Cauthen, Lita Gatlin, Marc Hanson, Dottie Leatherwood, and Stephanie Neely. And "Carl Plansky: Painter and Printmaker," with guest Curator, Larry Elder. A reception will be held on July 3, from 5-7:30pm. Artists' Walk & Talk from 5-6pm. Elder, well-known art consultant and former owner of a gallery in Charlotte, is curator of both shows that feature some of his favorite artists. Hours: Tue.-Sat., noon-5pm. Contact: 828-859-2828 or at ([www.upstairsartspace.org](http://www.upstairsartspace.org)).

## Valdese

**Valdese Heritage Arts Center**, 146 Main Street West, Valdese. **Ongoing** - The center offers a great selection of unique gifts on exhibit and for sale, including, but not limited to original paintings, pottery, needlework, wood-carvings, hand crafted furniture, ceramic sculptures, stained glass, photography, jewelry, floral arrangements greeting cards, quilts and home made soap. Hours: Mon.-Fri., 9am-5pm & Sat., 11am-3pm. Contact: 828/874-1849 or at (<http://vhac.webs.com>).

## Washington

**River Walk Gallery and Arts Center**, 139 W. Main Street, Washington. **Ongoing** - All work is done by local artists and has to be juried into the gallery. The gallery includes watercolor, oil, and acrylic paintings, photography, pottery, mixed media, fiber arts, jewelry, wood work, stained glass, and books written by local authors. Hours: Mon.-Sat., 10:30am-5pm. Contact: 252/974-0400.

## Waynesville

**Little Gallery on Church Street**, 37 Church Street, Waynesville. **Ongoing** - Featuring monthly exhibits by regional arts. Sponsored by the Haywood County Arts Council. Hours: Mon.-Fri., 9am-5pm. Contact: 828/452-0593 or at ([www.haywoodarts.org](http://www.haywoodarts.org)).

**The Museum of North Carolina Handicrafts**, 307 Shelton Street, corner of US 276 So. and Shelton Street, Waynesville. **Ongoing** - Featuring the handicrafts of North Carolina in the historic Sheldon House. Hours: Museum hours change seasonally, call 828/452-1551.

## Wentworth

**Dan River Art Market & Gallery**, 1122 NC Hwy. 65, Wentworth. **Ongoing** - The gallery offers art and craft by local artists and 6 gallery exhibits throughout the year, workshops and lectures. Hours: Thur., 10am-4pm; Fri., 11am-2pm; and by appt. Contact: 336/349-4039 or at ([www.artsinrockingham.org](http://www.artsinrockingham.org)).

## Wilmington

**Louise Wells Cameron Art Museum**, @ intersection of Independence Blvd. & South 17th Street, Wilmington. **Through Aug. 1** - "Another Look - The Eye Learns: Modernist Prints from the Louis Belden Collection", featuring a new installation of works from collector Louis Belden's collection of modernist and postmodernist prints. This exhibition of work from Belden's collection reads like a who's who of modernist and postmodernist prints and includes work by Judy Chicago, Richard Diebenkorn, Sonia Delaunay, Helen Frankenthaler, David Hockney, Howard Hodgkin, Robert Mangold, Kasimir Malevich, Robert Rauschenberg, and Frank Stella, among others, curated by Curator of Exhibitions and Collections Bob Unchester. Unchester will add new works throughout the run of the exhibition, refreshing the experience for museum goers. **Through Aug. 1** - "Safe Places," an exhibition of work by North Carolina artist Robert Johnson. It is as if artist Robert Johnson was experiencing the longing for safety amidst the current pandemic when titling his major body of work, Safe Places. In truth, Johnson started this ambitious

project three years ago, with the objective to reside and work on site in all 41 North Carolina State Parks. This exhibition premieres more than 80 artworks realized through the artist's vulnerable investigations. Opening himself to the environment, he shares, "Recording the mood of a landscape is just as important as recording what I see." Among the works on display in "Carolina Beach," Johnson's painting of Carolina Beach State Park. **Through Oct. 17** - "Elizabeth Bradford: A House of One Room". North Carolina artist Elizabeth Bradford's masterful paintings originate from an intimate observation and profound reverence for the natural environment. This collection of painting offers an invitation to share Bradford's journey as she explores the gifts of the natural world. The reverence that she has for the environment, and all of its inhabitants, can inspire a deeper awareness of our interconnectedness and responsibility for its preservation and survival. **Pancoe Art Education Center, Exhibition Cases, Ongoing** - View some of the Seagrove and contemporary pottery from the museum's permanent collection in the cases. These include the works of resident artist Hiroshi Sueyoshi, Ben Owen III and Jugtown Pottery among other works. Admission: Yes. Hours: Tue.-Sun., 10am-5pm and Thur. till 9pm. Contact: 910/395-5999 or at ([www.cameronart-museum.org](http://www.cameronart-museum.org)).

**ALTERNATE ART SPACES - Wilmington Airlie Gardens**, 300 Airlie Road, Wilmington. **Ongoing** - Located two miles west of Wrightsville Beach in Wilmington, North Carolina, Airlie Gardens encompasses 67 acres of walking paths, a freshwater lake, and formal gardens that showcase seasonal blooms, mighty live oaks, historic structures, and contemporary sculpture. Airlie is a member of the North Carolina Birding Trail, and it's diverse ecosystems provide unique habitats for a variety of colorful wildlife. Discover what makes Airlie Gardens a premiere garden of the South and a prime destination spot for garden and nature lovers from around the world. Come discover the beauty. Admission: Yes. Hours: Tue.-Sun., 9am-5pm Contact: 910/798-7700 or at ([www.airliegarden.org](http://www.airliegarden.org)).

**Burgwin-Wright House & Gardens**, 224 Market St. Wilmington. **Through July 17** - "Color Splash," featuring works by Todd Lengyelotti, a mixed media artist exploring in ceramics, painting on canvas, and resin work. Hours: Mon.-Sat., 10am-4pm. Contact: 910/762-0507.

**The Bellamy Mansion Museum**, 503 Market Street, Wilmington. **Through July 10** - "Life Stories of People and Places," an exhibition of original paintings by Livy Hitchcock. Hours: Tue.-Sat., 10am-5pm & Sun., 1-5pm. Contact: 910/251-3700 or at ([www.bellamymansion.org](http://www.bellamymansion.org)).

## Winston-Salem



Work by Srth Moskowicz

**Artworks Gallery**, 564 N. Trade Street, Winston-Salem. **Through July 31** - "Memories Downtown," featuring works by Karen Moran Kopf, and **Through July 31** - "NEWds - New Interpretations of the Female Form," featuring works by Seth Moskowicz. The W-S Gallery Hop will be held on July 2, from 7-9pm and a reception will be held on July 11, from 2-4pm. The paintings in Karen Moran Kopf's exhibition depict people and locations the artist either observed or events in which she participated. They are mostly on Trade Street and Fourth Street in downtown Winston-Salem. Most of Seth Moskowicz's artwork focuses on nature and nudes, usually shown in combination. For this show, the artist focuses on nudes to create works incorporating many of the same compositional elements, used differently to different effect. **Ongoing** - The gallery is the longest running cooperative gallery established by artists for artist members, showing 12 exhibits per year in the heart of Winston-Salem's Art District. Approx. 21 artists show their work in mediums such as painting, watercolor, drawing, photography, sculpture, encaustic wax, and digital art. The gallery features the work of Marion Adams, Wiley Akers, Woodie Anderson, Mary Beth Blackwell-Chapman, Owens Daniels, Chris Flory, Jim Gemma, Don Green, Alix Hitchcock, Karen Moran Kopf, Lea Lackey-Zachmann, Nanu LaRosee, Barbara Rizza Mellin, Seth Moskowicz, Wendell Myers, Diane Nations, Betti Pettinati-Longinotti, Susan

continued on Page 53