

Saladella Cafe in Durham NC, Offers Works by Nathalie Worthington

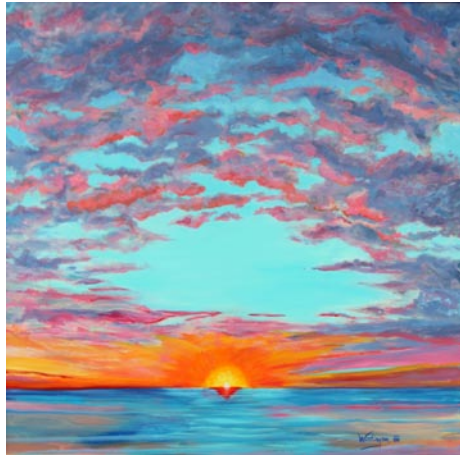
The Saladella Cafe in Durham NC, is presenting new landscapes by Nathalie Worthington, on view through July 31, 2014.

Worthington's art education began at the Cleveland Museum of Art at age five. Her family recognized that her favorite pastime was drawing and painting, and encouraged her passionate interest in art. Sketching and making art using any medium became a focus for her life.

Worthington tells of a daunting artistic challenge when she was a teenager, contemplating the forest next to her home. "How can I express the view of all these trees with light filtering through their infinite numbers of leaves - how can anyone possibly express this detail in a painting!" Her answer came quickly as she discovered the Impressionist painters. She recalls finding "The Age of Impressionism" With an impressionistic approach to her paintings, her style became a combination of realism and impressionism. Immersing in the world of shape, color, light, and perspective, Worthington has found her voice as a painter.

The precious beauty of nature, from woods to ocean, farms and their inhabitants, and scenic vistas, suggests a presence that Worthington endeavors to show in her paintings. Sometimes the landscapes whisper from an inner source and a very personal "soul scape" emerges.

"Something I see resonates with me and a plan for a painting begins to take shape. The initial inspiration is so compelling that a feeling of focus takes over and surrender to the immediate process leads the way. The



Work by Nathalie Worthington

finished image is numinous, and I'm in the present moment allowing a careful drawing to take shape. Colors dance between dark and light as the composition holds them in their myriad transformations. Brush strokes, accent of depth and meaning, all dance as the painting comes to life. With colors fusing, and shapes defining, I engage in a process of devoted, joy-filled effort. As the painting nears completion, my critical eye passes slowly over each inch and the finishing touches complete the story of that initial inspiration," says Worthington.

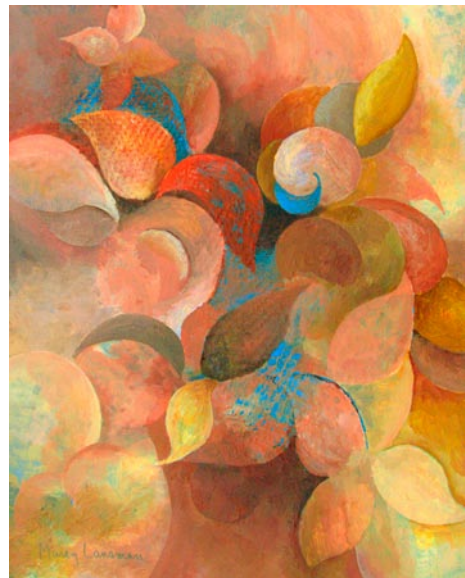
Worthington's paintings are included in many private and public collections internationally. She has exhibited her work in numerous one woman and group shows.

For further information check our NC Commercial Gallery listings, call the cafe at 919/489-5776 or visit (www.saladella.com).

Hillsborough Gallery of Arts in Hillsborough, NC, Features Works by Linda Carmel, Marcy Lansman & Lynn Wartski

The Hillsborough Gallery of Arts in Hillsborough, NC, will present *Attention To Detail*, an exhibit of new works by Linda Carmel, Marcy Lansman and Lynn Wartski, on view from July 21 through Aug. 24, 2014. A reception will be held on July 25, from 6-9pm, during Hillsborough's Last Friday's Art Walk.

There is a saying that artists know only too well, "the devil is in the details." The smallest detail can sometimes totally transform a work of art. Although the approaches of artists Linda Carmel, Marcy Lansman and Lynn Wartski are very different, for each of them details are crucial.



Work by Marcy Lansman

Marcy Lansman, whose previous work included very detailed representational paintings, decided to go in a different direction. "Most of the pieces in this show are non-representational. The unifying element is their color palette, which ranges from orange/rust/brown on the one hand through neutral warm gray to blue/blue-green/green on the other.

"My process has been to lay down a 'first draft' quickly in one sitting, restraining myself from any fussing or revising," says Lansman. "Inevitably, at the end of this session I feel that I have created a masterpiece! I let this draft sit for a day or so. When I go back, I discover that my masterpiece is not as flawlessly marvelous



Work by Lynn Wartski

as it first seemed. Then I begin the process of revising. The challenge then is to clean up the problems without sacrificing the freshness of the original. This is where 'attention to detail' comes in."

Says Lansman, "I have been surprised to discover that I spend just as much time adjusting the details of non-representational as representational work. What is different is the timing and the goal. When I create a drawing, whether it is a flower or a face, I concern myself with details right from the start. In my more abstract work, I focus on major compositional issues at the beginning and deal with the details later. In the representational work, the goal of the details is to capture the appearance and the spirit of the thing I'm painting. In the non-representational work the goal is to create a piece that will be satisfying both to me and to the viewer, something that will please or stimulate or in some way enlighten."

Lynn Wartski describes the use of detail in her figure sculptures, "For the past couple of years I have concentrated my efforts on small, mixed media figure sculptures that are referred to as 'sculptural art dolls.' The intimate scale of these pieces invites the viewer to take a closer look. By their very nature these sculptures require that I pay "attention to detail."

"Some dolls start as sketches in a book and others are conceived entirely in the studio, but all begin construction with

continued above on next column to the right



Lynn Wartski

Linda Carmel

Marcy Lansman

Attention to Detail

July 22 - Aug 24

**Lynn Wartski
Linda Carmel
Marcy Lansman**

Opening
Reception

Fri, July 25, 6-9



121 N. Churton St.,
Hillsborough, NC
HillsboroughGallery.com
919-732-5001

a bit of metalsmithing," adds Wartski. "Each doll's face begins as a flat disk cut from copper stock that I anneal, hammer, cut and shape into a face. Eyes are created by torch firing glass enamels on copper or brass nails and tacks. I form the rest of my basic figure from a wooden sphere head atop a twisted wire skeleton. It is at this point that details start to emerge. What will the figure be doing? How will he or she be dressed? Will this be a doll that can live outside? The answers to these and other questions lead to the details that emerge for each figure. One may be simply dressed and seated with a book, another dressed in an ornate costume complete with jewels, and a third riding a bike made just for her." Wartski enjoys the reactions they and their details draw from viewers. "These figures bring together so much that I have developed in my work over the years."

Either women or idioms - or sometimes both - are common threads in much of Linda Carmel's work. However, this year she has brought more global influences into the mix. "I have looked at style and design details from around the world and have used them in each of the paintings in this series," says Carmel. "Women, cultural designs and idioms are the puzzle pieces I began with in each painting. Even though I started each one with a set of details in mind, it is the 'attention to the detail' of the actual painting as it progresses that becomes central. My work is in finding a balance of color and form using



Work by Linda Carmel

those 'puzzle pieces' I began with."

Carmel works with acrylic modeling paste to form three-dimensional paintings on canvas. "I want viewers to become intimate with the painting by feeling the contours of the surface," she says.

Founded in 2006, the Hillsborough Gallery of Arts (HGA) is owned and operated by 22 local artists. HGA represents established artists, accomplished in their fields, exhibiting modern and contemporary fine art and fine craft. Represented media include painting, sculpture, ceramics, photography, fiber, jewelry, glass, metal, mosaics, enamel and wood.

For further information check our NC Commercial Gallery listings, call the gallery at 919/732-5001 or visit (www.HillsboroughGallery.com).

ENO Gallery in Hillsborough, NC, Offers Works by Marvin Saltzman

ENO Gallery in Hillsborough, NC, is presenting *The Abstract Landscapes of Marvin Saltzman*, on view through Aug. 17, 2014.

Saltzman's distinguished career spans more than 60 years. Born in Chicago, IL, in 1931, Saltzman studied at The University of Chicago and The Art Institute of Chicago from 1954 to 1956. He received

his Master of Fine Arts degree from the University of Southern California in 1959.

Saltzman influenced numerous notable artists during his tenure at the University of North Carolina, Chapel Hill from 1967 to 1996. One of North Carolina's most influential art professors, as well as a profoundly gifted painter, Saltzman has

continued on Page 35