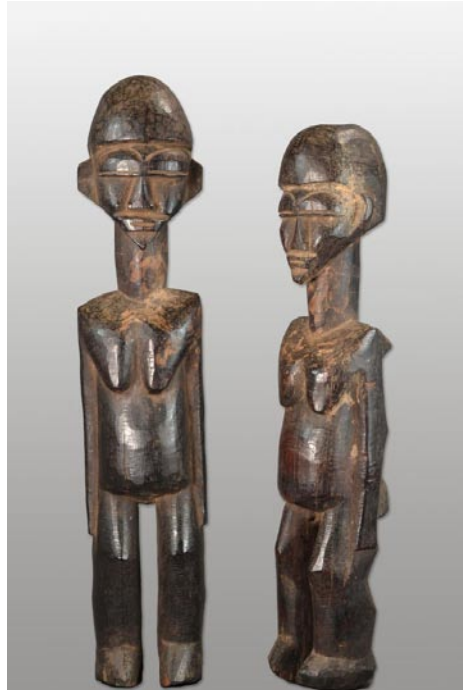


# NC Commercial Galleries

continued from Page 71

impressionist painter whose figures, still life and landscape paintings have been exhibited across the country. The other exceptionally talented and accomplished resident artists include Kari Feuer, Susan Fishbein, Ann Hair, Pappy Khouri, Heidi-Lee Peach, Ora Sorensen, Peggy Vineyard and Jenny McKinnon Wright. Current guest artists are celebrated painters Richard Oversmith and Jove Wang. Ceramic artist Mark Hewitt's work is also displayed at the gallery. Hours: Thur.-Sat., 11am-5pm & Sun., noon-5pm. Contact: 910/707-4336 or at ([www.beckfineart.com](http://www.beckfineart.com)).

**Bottega Art & Wine Gallery**, 723 N. 4th Street, Wilmington. **Ongoing** - Featuring works by regional and international artists in a variety of media. Hours: Tue.-Wed., 1-10pm and Thur.-Sat., 1pm-midnight. Contact: 910/399-4872 or at ([www.bottegageallery.com](http://www.bottegageallery.com)).



Works from Charles Jones African Art

**Charles Jones African Art**, 311 Judges Road, Unit 6-E, Wilmington. **Ongoing** - A gallery dedicated to the traditional arts of West and Central Africa, with over 35 years experience in building fine collections for collectors and museums. Inquiries are welcome. Consultation, research and appraisal services available for individuals, estates and institutions by ISA certified appraiser, Maura Kropke. Exhibitions arranged and curated with essays by major scholars. Hours: Mon.-Fri., 7:30am-4:30pm. Contact: 910/794-3060 or at (<https://charlesjonesafricanart.com>).

**Dan Beck Studio**, 857 Village Road, Leland. **Ongoing** - features some of the best in national talent for representational and abstract art. Being the studio of award-winning artist, Dan Beck. The other exceptionally talented and accomplished resident artists include Kari Feuer, Susan Fishbein, Ann Hair, Pappy Khouri, Heidi-Lee Peach, Ora Sorensen, Peggy Vineyard and Jenny McKinnon Wright. Current guest artists are celebrated painters Richard Oversmith and Jove Wang. Ceramic artist Mark Hewitt's work is also displayed at the gallery. Hours: Thur. - Sat., 11am-5pm; Sun. noon-5pm; and 4th Fri., 6-9pm. Contact: 910-299-8288 or at ([www.beckfineart.com](http://www.beckfineart.com)).

**ERA 20th Century Furniture and Art Gallery**, 523 South 3rd St., Wilmington. **Ongoing** - Inviting emerging artists of all sorts, to fill the quiet space with cutting edge art that not only is pleasant to view, but also thought-provoking. Unique modern furnishings from the mid-20th century complement the contemporary art. Hours: Wed.-Sat., 11am-5pm or by appt. Contact: 910/612-0542.

**Gallery Citrine**, 17 S 2nd Street, Wilmington. **Ongoing** - Featuring works by BJ Grimmer, PD Chisholm, Kathy Schrum Peck, Nancy Lang Miller, Brooke Eagle, Deb Williams, Meroe Wheatley, Sue Cunningham, Chris Pfund, Donna Launey, and Robin Jones. Hours: Thur.-Sun., noon-4:30pm or by appt. Contact: e-mail to ([gallerycitrine@gmail.com](mailto:gallerycitrine@gmail.com)) or at (<https://gallerycitrine.com/>).

**Janet B. Sessoms Studio@ the ArtWorks**, 200 Willard Street, Wilmington. **Ongoing** - Featuring works by Janet B. Sessoms. Hours: call for hours. Contact: 910/840-0208, e-mail at ([jbsessoms47@ec.rr.com](mailto:jbsessoms47@ec.rr.com)) or at ([www.janetb-sessoms.com](http://www.janetb-sessoms.com)).

**New Elements Gallery**, 271 North Front Street, Wilmington. **Ongoing** - Featuring works by regional and nationally recognized artists. We offer a wide variety of contemporary fine art

and craft, including paintings, sculpture, ceramics, glass, fiber, jewelry and wood. Hours: Tue-Sat., 11am-6pm or by appt. Contact: 910/343-8997 or at ([www.newelementsgallery.com](http://www.newelementsgallery.com)).

**Port City Pottery & Fine Crafts**, at The Cotton Exchange, 307 North Front Street, Wilmington. **Ongoing** - Celebrating ten years in business, Port City Pottery & Fine Crafts, in the historic Cotton Exchange in downtown Wilmington, is the first gallery in Wilmington dedicated exclusively to local, handmade, one-of-a-kind, three-dimensional art and craft by jury-selected coastal North Carolina artisans. We present decorative and functional works in clay, fiber/textiles, gourds, baskets, jewelry, mixed media, glass and wood in a beautiful setting in this early 20th century historic building. Handmade objects, whether held, worn, or displayed, enrich our lives by connecting us with our humanity, creativity, and our history. It is evident when you enter Port City Pottery & Fine Crafts that all of the Gallery members are pursuing not only art but their passion. Hours: Mon-Sat., 10am-5:30pm & Sun. noon-4pm. Contact: 910/763-7111 or at ([www.portcitypottery.com](http://www.portcitypottery.com)).

**Sarah Diana Fine Art**, 19 Market Street B., Wilmington. Apr. 5 - Grand Opening. **Ongoing** - Sarah Diana Herzog is a self taught artist, mediocre handy woman, mom of two amazing humans, and lover of all things that bring people joy. My sunlit studio is nestled in Historic Downtown Wilmington - where I call "home." I have been painting professionally for five years, and my passion is to develop lasting relationships with art lovers and collectors. I value connecting on a personal level through meaningful conversation with clients. Hours: daily 10am-5pm. Contact: 910/619-0287 or at ([sarahdianafineart.com](http://sarahdianafineart.com)).

**Soda Pop Gallery**, 1120 Princess Street, Soda Pop District, Wilmington. **Ongoing** - Featuring works by Mark Weber, Todd Cariganan, Jean Dobbs Fonvielle, Jonathan Summit, and Eleanor Gaynor. Hours: Thur.-Fri., 10am-2pm; Sat., noon-3pm; & 4th Fri., 6-9pm or by appt. Contact: 910/4-9-5628.

**The Art Factory**, 21 Surry Street, Wilmington. **Ongoing** - We are located in the warehouse district on the edge of beautiful Historic Downtown Wilmington, North Carolina. In addition to our retail galleries, the Art Factory Gallery houses a number of studios for working artists and a Wine Bar featuring distinctive Yadkin Valley North Carolina wines, available by the glass while you enjoy the galleries. Hours: call about hours. Contact: 910/399-3793 or visit (<https://www.facebook.com/ArtFactoryGallery/>).

**The ArtWorks**, 200 Willard Street, Wilmington. **Ongoing** - In Gallery Verrazzano, we feature all the art created by the ArtWorks™ Artists and visiting Artists. The gallery features different mediums throughout the gallery! You are free to walk around and admire or even purchase the art work around the gallery. **Ongoing** - The ArtWorks is an art village providing art studios, gallery space, and an event venue; fostering a creative environment for artists, educational opportunities, and enhancement of the Wilmington community, through art. Our Mission is to enhance the community, assist the artist, contribute to the revitalization of downtown Wilmington, to preserve Wilmington's commercial landmarks, and to increase the livelihood of local artists and provide a place to create and display all types of art. Hours: 2nd & 4th Saturdays, 10am-3 or by appt. Contact: 910/352-7077 or at (<http://www.theartworks.co/>).

**The Golden Gallery**, @ The Cotton Exchange, 307 N. Front St., Wilmington. **Ongoing** - Featuring works by John W. Golden and Mary Ellen Golden. Hours: Mon.-Sat., 10am-5:30pm & Sun., 1-4pm. Contact: 910/762-4651 or at ([www.thegoldengallery.com](http://www.thegoldengallery.com)).

Alternative Art Spaces - Wilmington  
**Intracoastal Reality Corporation**, 228 N. Front Street, Suite 101, Wilmington. **Through June 24** - "Loving Life," featuring works by Yeliz Eseryel. Hours: Mon.-Sun., 9am-5pm. Contact: 910/256-4503.

## Wilson

**Artisan Leaf**, 113/115 Tarboro Street SW, Wilson. **Ongoing** - We have reimagined tobacco as a decorative surface, taking this innately unique leaf and applying it to make one-of-a-kind tobacco leaf furniture, panels, architectural components and decorative accessories. Offering a naturally inspired vision, our products are available in a variety of stunning shades and tones providing a timeless look. Contemporary or traditional, sophisticated or rustic, Artisan Leaf will enhance any room or space. Hours: Wed.-

Fri., 2-5:30pm & Sat., noon-5pm. Contact: 252/674-1223 or at (<https://artisanleaf.com/>).

**Burk Uzzle Studio**, 106 Douglas Street E, Wilson. **Ongoing** - Burk Uzzle's career, like his pictures, is a nuanced composition blending American culture, individual psyches of particular places and people, and an atypical way of seeing ourselves, our values, and our community. Always respectful yet locating the poignant or quirky, the history of his narrative belongs to all of us. Initially grounded in documentary photography when he was the youngest photographer hired by "LIFE magazine" at age 23, his work grew into a combination of split-second impressions reflecting the human condition during his tenure as a member of the prestigious international Magnum cooperative founded by one of his mentors Henri Cartier-Bresson. His archive spans almost six decades. His current work rests deep in photographic appreciation of the quiet, strong, and eloquent beauty he discovers in America's small towns and its people. It is along small back roads, limned with feelings and a surety of surprise for the heart wide open, that continue to support his understanding of how America keeps its personality out on a limb. Uzzle's current bodies of work (some of which are African-American) are artful and constructed reflections of his subjects. His hope is for a graphic presentation of something universal within the particular, and all the better when involving a gentle chuckle and knowing smile. He is represented by SOCO Gallery in Charlotte, NC and Tracy Morgan Gallery in Asheville, NC. Hours: by appt. Contact: 252/363-1812 or e-mail to ([burk@burkuzzle.com](mailto:burk@burkuzzle.com)).



Work by Frans van Baars

**House of Van Baars Gallery**, 104 Douglas Street E, Wilson. **Ongoing** - Frans van Baars has been a visual artist for more than sixty years. A graduate of the Ivy School of Art in Pittsburgh, PA, in 1969, he has been painting eye catching subjects on location. His collection ranges from barns in Ohio, to coastal scenes on North Carolina's Outer Banks. van Baars has traveled throughout the United States, Europe, and several other continents to capture the splendor of majestic architecture and the beauty of nature. He finds home in Wilson with his wife Brenda. Hours: by appt. Contact: 252/230-9797 or at (<https://houseofvanbaars.com/>).

**Iconostar Art Studio and Park**, 224 Goldsboro Street SW, Wilson. **Ongoing** - Featuring sculpture by Elizabeth Laul Healey. Iconostars are made with the artist's signature "Circles of Life" motif. They represent loved ones, animals, and

our precious Mother Earth. Each circle is unique and has its own backstory. All Iconostars have one thing in common, they each have clear eyes so that any person who looks at them can have the ability to see themselves through their eyes. The Iconostar sculptures are made from a variety of materials including, glass tile, stones and crystals, watches, drawer handles, sea shells, miscellaneous found objects, and love. Their bases are made from foam, PVC pipes filled with sand, rebar, wood, glue, grout and more. Hours: Thur., noon-10pm; Fri. & Sat., noon-6pm; or by appt. Contact: 310/488-1834 or at (<https://elizabethlaulhealey.com/>).

**The Edge Wilson**, 127 Barnes Street W, Wilson. **Ongoing** - The Edge Wilson is Art + Gallery+ Studio + Loft. Hours: Thur. + Fri., noon-6pm (1st Fri., 4-8pm); Sat., noon-5pm; Sun., 1-4pm. or by appt. Contact: 919/271-7971 or e-mail to ([art@theedgewilson.com](mailto:art@theedgewilson.com)).

**The Gallery at 317**, 317 Barnes Street, S, Wilson. **Ongoing** - Owned by Alexander Anthony, The Gallery is a fashion and art store with men, women and kids clothing. Also displaying artwork from local & regional artists. Hours: Mon.-Fri., 4:30-8pm & Sat., 10am-8pm. Contact: 252/363-4698 or at (<http://www.thegalleryncclothing.art/>).

## Winston-Salem Area

**Downtown Arts District**, Sixth and Trade streets, Winston-Salem. **June 7** - "DADA First Friday Gallery Hop," with special artist demonstrations, art exhibits, and shops and studios open evening hours. Events are free and open to the public. Gallery Hops are funded and sponsored by the Downtown Art District Association, a non profit organization, and their supporting membership. Contact: 336/722-2345 or at ([dadaws.net](http://dadaws.net)).

**Delurk Gallery**, 207 W 6th Street, Winston-Salem. **Ongoing** - An artist run gallery, dedicated to the exposure and sale of current artists' work. Hours: Fri.-Sat., noon-6pm & Sun., noon-4pm. Contact: 336/486-3444 or at ([www.delurkgallery.com](http://www.delurkgallery.com)).

**Island Arts On Trade**, 521 N. Liberty St., Ste. 100, in the Artists On Liberty Building, across from the DADA Community Center, Winston-Salem. **Ongoing** - Featuring visual and functional artwork by gallery artist, Gary Campbell. Also, featuring other multicultural artists and mixed media artwork throughout the year. Hours: Fri.-Sat., 1-5pm or by appt. Contact: 336/722-0510.

**North Trade Street Arts**, 604-A Trade Street, Winston-Salem. **NTSA Gallery, T - "** Hours: Fri., noon-7pm; Sat.-Sun., noon-5pm; and DADA 1st Friday Gallery Hop, noon-10pm or by appt. Contact: e-mail at ([northtradestreetarts@gmail.com](mailto:northtradestreetarts@gmail.com)) or at ([northtradestreetarts.com](http://northtradestreetarts.com)).

## Carolina Arts

[www.carolinaarts.com](http://www.carolinaarts.com)



You can find [past issues](#) all the way back to August 2004!

You can find [past articles](#) all the way back to June 1999!

History is the gateway to the future. Send us your email address to be added to our list to receive notice of each monthly issue.

[info@carolinaarts.com](mailto:info@carolinaarts.com)