

NC Commercial Galleries

continued from Page 57

Wadesboro

Olde Mill Gallery & Studios, Lockhart-Taylor Center, 514 N. Washington St., Wadesboro. **Ongoing** - At the gallery visitors will see artwork by regional artists which includes: original paintings in oil, acrylic & watercolor, that range from landscapes to abstracts; photography; works in copper and copper repousse; ceramic creations, custom sculptured and functional; art glass jewelry, jewelry made from beads of Swarovski crystal; hand-stitched quilts of exquisite designs; hand painted goblets, pitchers and vases; wood sculptures and turnings, and more. Hours: Mon.-Thur., 10am-5pm; Fri., 10am-3pm or by appt. Contact: 704/272-5464 or at (www.oldemillgallery.org).

Waxhaw

Stewart's Village Gallery, 116 McDonald St., Waxhaw. **Ongoing** - Featuring pottery by Bill Stewart, as well as works by over 300 other artists including both decorative and functional handmade pieces. The gallery is filled with pottery, jewelry, wrought iron, garden accents, decorative whimsy and so much more. Hours: Mon.-Sat., 10am-5pm & Sun., 1-5pm. Contact: 704/843-5638 or at (www.stewartsvillagegallery.com).

Waynesville

Main Street and Depot Street, Waynesville. **June 1, 5-9pm** - "First Friday Art After Dark." The Waynesville Gallery Association is excited to present Art After Dark, on the first Friday of every month. Enjoy a stroll through working studios and galleries on Main Street and Depot Street. Members include the Haywood County Arts Council's Gallery 86, Earthworks, The Jeweler's Workbench, Burr Studios, Twigs and Leaves Gallery, TPennington Art Gallery, Grace Cathey Sculpture Garden and Gallery, Cedar Hill Studios, The Mahogany House, Art on Depot, and the Village Framer. We are growing! Historic Frog Level, home to the Mahogany House and Art on Depot is a short walk from Main St., where many artists have working studios. With over 12 galleries participating, everyone is sure to find inspiration through the beauty of art! Contact: 828-456-3517 or at (www.waynesvillegalleryassociation.com).

Blue Owl Studio & Gallery, 11 N. Main Street, Waynesville. **Ongoing** - Featuring art and pottery by local and regional artists, plus our own unique and exclusive collection of vintage handcolored art advertising, quotes and mountain scenes. Hours: Mon.-Sat., 10am-5:30pm & (in season) Sun., noon-5pm. Contact: 828/456-9596 or at (www.blueowlnc.com).

Burr Studio & Gallery, 136 N. Main Street, Waynesville. **Ongoing** - Featuring lyrical sculpture by Dane Burr, functional pottery by MaryEtta Burr, and works by other artisans in various media. Hours: Mon.-Sat., 10am-5:30pm. Contact: 828/456-7400.

Earthworks Gallery, 21 N. Main Street, Waynesville. **Ongoing** - Featuring art in all mediums celebrating native peoples and our earth. Hours: Mon.-Sat., 10am-6pm & Sun., noon-1pm. Contact: 828/452-9500 or at (www.earthworksgallery.com).

Grace Cathey Gallery & Sculpture Garden, 136 Depot Street, inside and behind Walker Service Station, Waynesville. **Ongoing** - Featuring works in metal by Grace Cathey including mirrors, lamps, and garden art. Demonstrations on some weekends. Hours: Mon.-Thur., 7am-6pm & Fri.-Sat., 11am-4pm. Contact: 828/456-8843 or at (www.gracecathey.com).

Ridge Runner Naturals, 33 N. Main Street, Waynesville. **Ongoing** - Featuring watercolor scenes of the mountains, quiet meadows and whispering forest of Western North Carolina by Jo Ridge Kelley. Hours: Mon.-Sat., 10:30am-5:30pm. Contact: 828/456-3003 or at (www.JoKelley.com).

Studio Thirty-Three, 33 Pigeon St., Waynesville. **Ongoing** - A unique jewelry studio and gallery, featuring the works of national award winning regional jewelers and full service studio offering fine handcrafted jewelry, custom design and restoration. Specializing in custom wedding bands and one-of-a-kind designs as well as rare and exotic gemstones. Hours: Tue.-Sat., 10am-6pm or by appt. Contact: 828/456-3443.

T. Pennington Art Gallery, 15 N. Main Street, Waynesville. **Ongoing** - Featuring pencil drawings of local scenery, and landmarks by Teresa Pennington, including originals, prints and gift items. Also framing is available. Hours: Mon.-

Sat., 10am-5pm. Contact: 828/452.9284 or at (www.tpennington.com).

Textures, 142 N. Main St., Waynesville. **Ongoing** - Featuring hand-crafter furniture by John Gernandt, textile art by Suzanne Gernandt, and other items of home decor. Hours: Mon.-Sat., 10am-6pm & most Sun., 1-5pm. Contact: 828/452-0058 or at (www.texturesonmain.com).

The Jeweler's Workbench, 80 N. Main St., Waynesville. **Ongoing** - Specializing in fine hand-crafted jewelry, custom design and repair, limited edition watches and jewelry boxes. Featuring award-winning artists of the Great Smoky Mountains and from across the country. Hours: Mon.-Sat., 10am-5:30pm. Contact: 828/456-2260.

Twigs & Leaves, 98 N. Main Street, Waynesville. **Ongoing** - Featuring the nature-related porcelain works with leaves by Kaaren Stoner, as well as other works by regional artists and craftsmen. Hours: Mon.-Sat., 10am-5:30pm. Contact: 828/456-1940 or at (www.twigsandleaves.com).

Weaverville

Mangum Gallery, 16 North Main Street, Weaverville. **Ongoing** - Featuring functional and decorative pottery dinnerware. Hours: Mon.-Fri., 9am-5pm and Sat., 10am-4pm. Contact: 828/645-4929 or (www.mangumpottery.com).

Miya Gallery, 31 N. Main St., Weaverville. **Ongoing** - The gallery is a new and refreshing addition to the WNC art scene. We exhibit work of over 50 artists: fine jewelry, clay, wood, glass, metal, fiber, photography and two dimensional art. Hours: Tue.-Fri., 10am-6pm; Sat., 10am-5pm & Sun., noon-4pm. Contact: 828-658-9655 or at (www.miyagallery.com).

West Jefferson/Jefferson

Acorn Gallery, 103 Long St., West Jefferson. **Ongoing** - Featuring original works by award winning and nationally exhibited artist Raney Rogers, including wildlife and landscape paintings and prints. Hours: Tue.-Fri., 11am-5pm & Sat., 11am-2pm. Contact: 336/246-3388 or at (www.acorngallery.com).

Ashe Custom Framing & Gallery, 105 S. Jefferson Ave., West Jefferson. **Ongoing** - Featuring a varied selection of originals and prints by local and regional artists. Also, a wide array of pottery and handcrafted wooden vases. Hours: Tue.-Fri., 10am-5pm & Sat., 10am-2pm. Contact: 336/246-2218.

Broomfields Gallery, 414 E. 2nd St. (across from the post office), West Jefferson. **Ongoing** - Featuring an exhibition of works by NC and SC artists in various mediums in a setting of quality antiques. Hours: Tue.-Sat., 11am-5pm. Contact: 336/846-4141 or at (www.broomfieldsgallery.com).

Prack Studio / Sculpture Garden, 431 Sunny-side Park Road, Jefferson. **Ongoing** - Featuring sculptures by Mary-Ann Prack. Hours: open by appt only. Contact: 828/406-7046 or at (www.prackart.com).

Stephen Shoemaker Studio, 113 S. Jefferson Ave., West Jefferson. **Ongoing** - Featuring original works by watercolorist Stephen Shoemaker. Specializing in historic landscapes and paintings of places and events in/of Ashe County and the area. The "Virginia Creeper" train series is particularly popular. Hours: Mon.-Fri., 10am-5pm or by chance. Contact: 336/246-3401.

Wilmington

Downtown Wilmington. June 22, 6-9pm - "Fourth Friday Gallery Nights," featuring a free monthly event where downtown galleries and studios open their doors to the public in an after-hours celebration of art and culture. The art walk is a self-guided tour featuring exhibitions of various artistic genres including oils, acrylics, watercolors, pastels, metals, ceramics, mixed media and more. Maps are available at all participating locations as well as the Visitors and Convention Center. For more info visit (www.wilmingtonfourthfridays.com).

Acme Art Studios, 711 N. 5th Ave., downtown Wilmington. **Ongoing** - Featuring works by Allan Nance, Angela Rowe, Angie Sinclair, Anna Kennedy, Chaz Manacsa, Dick Roberts, Dumay Gorham, Fritzi Huber, Gary Breece, Grey Pascal, Karen Crouch, Kristen Crouch, Marshall Milton, MJ Cunningham, Nicolle Nicolle, Pam Toll, Mark Weber, Arrow Ross, and Mike John-

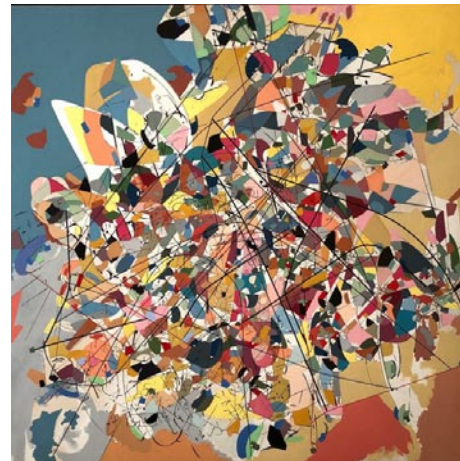
son. Hours: are by appt. only. Contact: Dick Roberts at 910/232-0027, e-mail (dickdow64@gmail.com) or Angela Rowe at (arowe@ec.rr.com) or at (www.acme-art-studios.com).

Art In Bloom, 210 Princess Street, Wilmington. **June 1 - 23** - "Pathways to Understanding," featuring paintings by Joanne Geisel and new ceramic work by Brian Evans. A reception will be held on June 1, from 6-8pm. A closing reception will be held on June 22, from 6-9pm. **Through June 4** - "Water & Sky," featuring paintings by Janette K. Hopper. **Ongoing** - The gallery focuses upon international and national artists including many artists from the Bloom family and local favorites such as Elizabeth Darrow (paintings) and Matthew Leavell (sculpture). Guests artists are featured every 3-4 months. Visitors will find a mixture of traditional and contemporary paintings, drawings, photography, sculpture, jewelry, ceramics, fabric, and objects found during the renovation of the building: horse shoes, bottles, papers, wagon parts, utensils, glass, and ceramics (c. 1910-1920). Hours: Tue.-Sat., 10am-6pm or by appt. Contact: 484/885-3037.

Bottega Art & Wine Gallery, 208 N. Front St., Wilmington. **Ongoing** - Featuring works by regional and international artists in a variety of media. Hours: Tue.-Wed., 1-10pm and Thur.-Sat., 1pm-midnight. Contact: 910/763-3737 or at (www.bottegageallery.com).

Checker Cab Gallery, 130 N. Front Street, Suite 102, Wilmington. **Ongoing** - The gallery is a full-service gallery featuring abstract and representational artwork serving collectors of all levels. It is downtown Wilmington's most dynamic gallery featuring original artwork by regional emerging and established artists, offering the public the opportunity to get to know and understand the artists directly. Hours: Tue.-Thur., noon-7pm; Fri.-Sat., noon-9pm; & Sun., noon-7pm. Contact: 919/270-1711 or at (www.checkercabproductions.com).

ERA 20th Century Furniture and Art Gallery, 523 South 3rd St., Wilmington. **Ongoing** - Inviting emerging artists of all sorts, to fill the quiet space with cutting edge art that not only is pleasant to view, but also thought-provoking. Unique modern furnishings from the mid-20th century complement the contemporary art. Hours: Wed.-Sat., 11am-5pm or by appt. Contact: 910/612-0542.



Work by James L. Williams

New Elements Gallery, 271 North Front Street, Wilmington. **Through June 16** - "James L. Williams: New Artist Debut". **Ongoing** - Featuring works by regional and nationally recognized artists. We offer a wide variety of contemporary fine art and craft, including paintings, sculpture, ceramics, glass, fiber, jewelry and wood. Hours: Tue.-Sat., 11am-6pm or by appt. Contact: 910/343-8997 or at (www.newelementsgallery.com).

Port City Pottery & Fine Crafts, at The Cotton Exchange, 307 North Front Street, Wilmington. **Ongoing** - Celebrating ten years in business, Port City Pottery & Fine Crafts, in the historic Cotton Exchange in downtown Wilmington, is the first gallery in Wilmington dedicated exclusively to local, handmade, one-of-a-kind, three-dimensional art and craft by jury-selected coastal North Carolina artisans. We present decorative and functional works in clay, fiber/textiles, gourds, baskets, jewelry, mixed media, glass and wood in a beautiful setting in this early 20th century historic building. Handmade objects, whether held, worn, or displayed, enrich our lives by connecting us with our humanity, creativity, and our history. It is evident when you enter Port City Pottery & Fine Crafts that all of the Gallery members are pursuing not only art but their passion. Hours: Mon.-Sat., 10am-5:30pm & Sun. noon-4pm. Contact: 910/763-7111 or at (www.portcitypottery.com).

SALT Studio & The Gallery at SALT Studio, 805 N. 4th Street, inside the historic Modern Baking Building in the heart of the Brooklyn Arts District - enter through glass door under the building overhang, the gallery is at the end of the hallway Wilmington. **Ongoing** - The Gallery at SALT Studio is Wilmington NC's only fine art

photography gallery. The gallery exhibits fine art photography by national, international, and local artists. The gallery strives to bring thought provoking, aesthetic, photo-based works of art to Wilmington. All of our exhibition openings are on the Fourth Friday Gallery Nights each month as administered by The Arts Council of Wilmington. SALT Studio is a photography studio that offers high caliber, personalized photographic services with a unique edge to Wilmington. Hours: Mon.-Fri., 10am-6pm and Sat., noon-5pm. Call prior to coming to make sure we are open and not on location shooting a job. Contact: 910/367-5720 or at (<http://SaltStudioNC.com>).

Sheffield Art Studio and Gallery, 802-A N. 4th Street, Brooklyn Arts District, Wilmington. **Ongoing** - Featuring original oil and watercolor paintings by Sarah Sheffield. Exhibits changing monthly. We stock my full line of mini gift boutique paintings as well. The shop will soon carry prints and note cards in 2017. Hours: Fourth Friday for the Wilmington Art Walk from 6-9pm or by appt. Contact: 919/815-2097 or e-mail at (sarah@sheffieldartstudio.com).

621N4th Gallery, 621 North 4th Street, Wilmington. **Ongoing** - The gallery is an artist-run gallery, studio and office space located in the heart of downtown Wilmington's Brooklyn neighborhood. The gallery location provides established and emerging artists the opportunity to exhibit and sell their work in a professional manner. Hours: Mon.-Thur., 1-5pm & 4th Friday, 6-9pm or by appt. Contact: 910/763-2012 or at (<http://621n4th.com/index.php>).

Spectrum Art & Jewelry, @ The Fourm, 1125-H Military Cutoff Rd., Wilmington. **Ongoing** - Featuring works by over 100 regionally and nationally renowned artists in a variety of media. Hours: Mon.-Sat., 10am-6pm. Contact: 910/256-2323 or at (www.spectrumartgallery.com).

The Art Factory, 21 Surry Street, Wilmington. **Ongoing** - We are located in the warehouse district on the edge of beautiful Historic Downtown Wilmington, North Carolina. In addition to our retail galleries, the Art Factory Gallery houses a number of studios for working artists and a Wine Bar featuring distinctive Yadkin Valley North Carolina wines, available by the glass while you enjoy the galleries. Hours: call about hours. Contact: 910/399-3793 or visit (<https://www.facebook.com/ArtFactoryGallery/>).

The ArtWorks, 200 Willard Street, Wilmington. **Ongoing** - The ArtWorks is an art village providing art studios, gallery space, and an event venue; fostering a creative environment for artists, educational opportunities, and enhancement of the Wilmington community, through art. Our Mission is to enhance the community, assist the artist, contribute to the revitalization of downtown Wilmington, to preserve Wilmington's commercial landmarks, and to increase the livelihood of local artists and provide a place to create and display all types of art. Hours: 2nd & 4th Saturdays, 10am-3 or by appt. Contact: 910/352-7077 or at (jim.knowles@theartworks.com).

The Golden Gallery, @ The Cotton Exchange, 307 N. Front St., Wilmington. **Ongoing** - Featuring works by John W. Golden and Mary Ellen Golden. Hours: Mon.-Sat., 10am-5:30pm & Sun., 1-4pm. Contact: 910/762-4651 or at (www.thegoldengallery.com).

Three Hounds Gallery, 29 S. Front St., Wilmington. **Ongoing** - Featuring works by Wayne McDowell, Jeff Chase, Dick Roberts, Shawn Best, Kristin Gibson, Fritzi Huber, Joanne Geisel, Christa Sylvester, Brian Evans, Mark Gordon, Rex Miller, and jewelry by Emily Parker. Hours: Tue.-Thur., 11:30am-5:30pm; Fri. and Sat., 11:30am-7:30pm & Sun., noon-3pm. Contact: 910/815-3330 or at (www.threehoundsgallery.com).

Winston-Salem Area

Downtown Arts District, Sixth and Trade streets, Winston-Salem. **June 1, 7-10pm** - "DADA First Friday Gallery Hop," with special artist demonstrations, art exhibits, and shops and studios open evening hours. Events are free and open to the public. Gallery Hops are funded and sponsored by the Downtown Art District Association, a non profit organization, and their supporting membership. Contact: 336/722-2345.

ArtConnections Gallery, 629 N Trade Street, Winston-Salem. **June 1, 7-10pm** - The gallery is celebrating its first year anniversary. We opened our doors at the Art Hop June 2017 at 629 N Trade St in Winston and its been a great year. **Ongoing** - We now have four resident artists, Cynthia Cukiernik, Audrey Lynge, Anne Murray, and Patty Pape. We also show 10 local consignment artists. Besides having two studio space

continued on Page 59