

Asheville Gallery of Art

continued from Page 29

resulting values, which are captured in many of his works. Junek attributes his affinity for painting atmospheric effects to having lived in coastal areas over the years and now living in the Blue Ridge. Most of the works in the show will be watercolor or pastel on paper along with some pencil drawings. Also included in the exhibit will be a sprinkling of experimental watercolors on canvas and birch panel.

A native of Texas, Junek began painting in 1989 after formal training at the Baton

Rouge Fine Arts Academy. He has continued his studies in workshops taught by nationally known artists. His works hang in numerous private and corporate collections as well as in museums. Junek resides in Hendersonville, NC, having moved to the area in 2000 after retiring from a career in engineering.

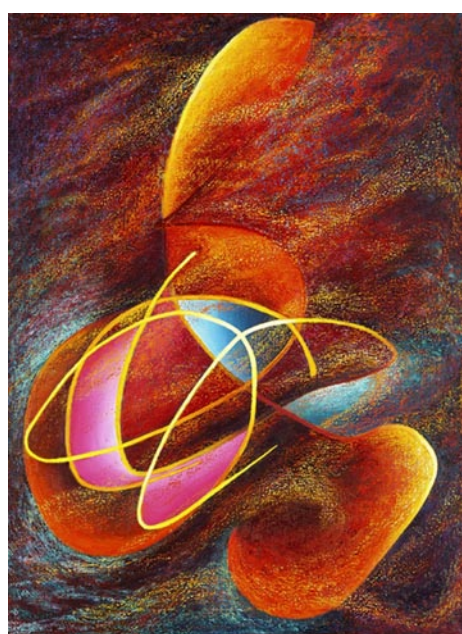
For further information check our NC Institutional Gallery listings, call the gallery at 828/251-5796, or visit (www.asheville-gallery-of-art.com).

UNC Asheville in Asheville, NC, Offers Works by Cecilia R. Frederic

UNC Asheville in Asheville, NC, is presenting *Homage to Life*, an exhibit of multimedia paintings by Hendersonville-based artist Cecilia R. Frederic, on view in Blowers Gallery, at UNC Asheville's Ramsey Library, through July 30, 2015.

Frederic's series was created in collaboration with the artist's 28-year-old daughter, Abigail, who was diagnosed with Trisomy 18, a genetic condition that is rarely survivable beyond infancy. Frederic used her daughter's drawings as a foundation and point of departure for her work. "Her drawings are instinctive and intuitive which to me is where the essence of art lies," Frederic said. "A primal human impulse is at the center of making art. My daughter has that essential impulse."

For further information check our NC Institutional Gallery listings, call the Library at 828/251-6336 or visit (library.unca.edu).



Work by Cecilia R. Frederic

Toe River Studio Tour Takes Place Throughout Mitchell and Yancey Counties in NC - June 5 - 7, 2015

It happens twice a year. And folks from all over the southeast look forward to it—the Toe River Studio Tour—the first weekend in June, the first weekend in December. This year's June tour will be the 5th through the 7th with 100 artists and galleries opening their doors and welcoming the public into where they live, work, create, and make a home in the Western North Carolina

mountains. It's like a free-self guided party held all over Mitchell and Yancey Counties. Artists dust off their shelves, set out their artwork, demonstrate techniques, and share a few moments with an "out-of-towner", a collector, even a neighbor down the road who always wondered who lived up yonder. And most of the artists have spent time in

continued above on next column to the right

their kitchens making delicious bites for their visitors to sample.

The Toe River Arts Council's (TRAC) Studio Tour began in 1993. Although some have moved away or turned to other things, almost half of those first 39 artists continue to participate; people visit their studios still to see "what's new and different this year". And this season, we welcome seven new artists and 17 host studios where artists from out of the area or too far out of the way can

show their work and share the space.

The Tour lasts three days, half a day Friday (noon to 4pm), then all day Saturday and Sunday (10am to 5pm). It's almost too much for one weekend. Time and the roads meander, and sometimes GPSs fail. By Sunday's end a few studios still remain on the list of must-visits. But there's always the next tour six months later; and most of the studios will open with just a phone call.

continued on Page 31

The Craft FAIR

of the SOUTHERN HIGHLANDS

JULY 16-19

JIM SAMS WOODART

U.S. CELLULAR CENTER, DOWNTOWN ASHEVILLE, NC
THU.-SAT.: 10AM-6PM; SUN.: 10AM-5PM

WWW.CRAFTGUILD.ORG
828-298-7928

SOUTHERN HIGHLAND CRAFT GUILD