

# Black Mountain College Museum

continued from Page 37

was instrumental in starting the intentional community, the Gate Hill Cooperative at Stony Point in New York. Involved in this live/work project were several people from BMC: John Cage, David Tudor, Karen Karnes, Paul & Vera Williams and M.C. Richards.

Weinrib has worked as an instructor, potter, designer, curator and sculptor (in various mediums, including plastics), and has received numerous awards for his work as it displays a versatility and creative energy that is not often rivaled.

The exhibition will show work from different phases of his career including early work made at Black Mountain College up to and including more recent work made within the past year. The exhibi-

tion will include paintings, graphics and sculpture.

BMCM+AC will present several programs in conjunction with this exhibition. Call to find out more about them.

The Black Mountain College Museum + Arts Center preserves and continues the unique legacy of educational and artistic innovation of Black Mountain College for public study and enjoyment. We achieve our mission through collection, conservation, and educational activities including exhibitions, publications, and public programs.

For further information check our NC Institutional Gallery listings, call the Museum at 828/350-8484 or visit ([www.blackmountaincollege.org](http://www.blackmountaincollege.org)).

## Asheville Gallery of Art in Asheville, NC, Features Works by Ruth Ilg

The Asheville Gallery of Art, in Asheville, NC, will present the exhibit, *Meditazioni*, featuring new works by Ruth Ilg, on view from June 1 - 30, 2012. A reception will be held on June 1, from 5-8pm.



Work by Ruth Ilg

Ilg offered the following statement: "On this meditative journey of color, form, and texture, I experimented with transforming elusive moments into visual expressions. I encourage viewers to regard my personal meditations as an invitation to give a voice to their own moment

elusivi."

Ilg, a native of Germany, is an award-winning artist, photographer, and tri-lingual poet. She resides and works in Asheville and on Lake Constance, Germany. She has studied with renowned artists in Europe and in the US, resulting in a continuing strong desire to work within a wide spectrum of techniques, styles, media, and themes. Ilg is known for her delicate watercolor botanicals, brilliant acrylic abstract paintings, unique mixed-media work, miniature oil landscapes, vibrant geometric designs, luminous reverse glass paintings, and for her innovative encaustic work.

Ilg is a frequently exhibited artist and photographer, and a widely published poet. She has won numerous awards for her creative work, which can be found in private and corporate collections around the world.

For further information check our NC Institutional Gallery listings, call the gallery at 828/251-5796 or visit (<http://www.ashevillegallery-of-art.com>).

## The Bender Gallery in Asheville, NC, Offers Celebration of Glass

The Bender Gallery in Asheville, NC, will present the exhibit, *Divergent Visions: Celebrating the 50th Anniversary of American Studio Glass*, on view from June 7 through Aug. 31, 2012. An opening reception will be held on June 7, from 5-8pm.



Janis Miltenberger, *Fortunes Choice*, Flame-worked and Painted Glass, 40" h x 18" w x 14" d

The exhibition will celebrate the diversity of glass as an artistic medium since the inception of the American Studio Glass Movement in 1962. New works made expressly for the exhibition by over twenty five regional and national as Page 38 - Carolina Arts, June 2012

well as Canadian glass artists will be on display.

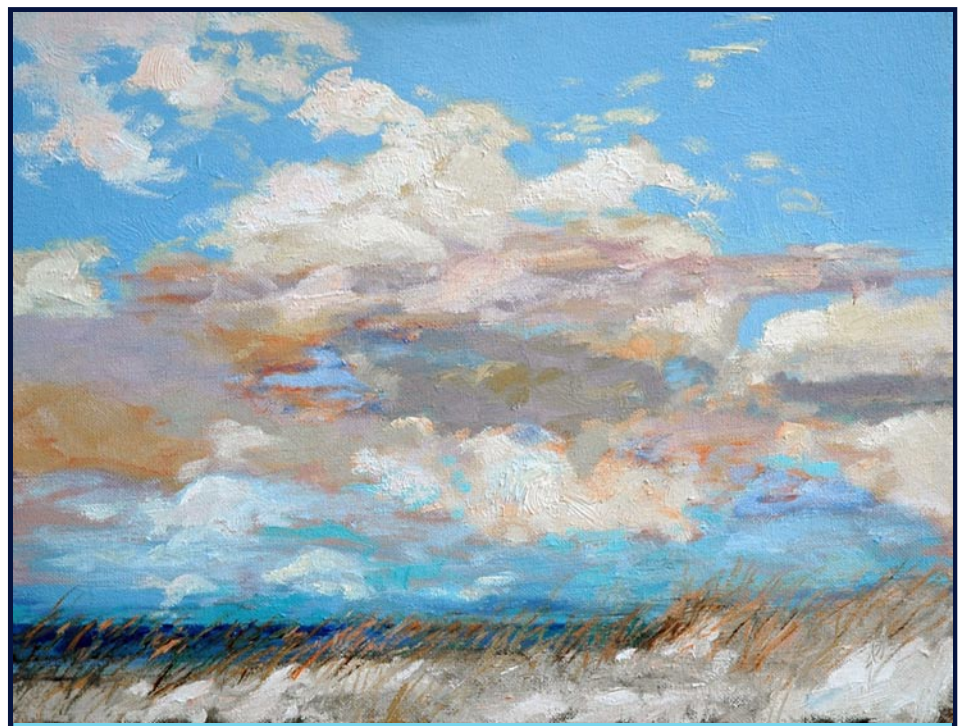
The Bender Gallery is the only gallery in the Asheville area dedicated exclusively to studio art glass and houses the regions' largest glass art collection. *Divergent Visions* will showcase the various techniques of glass art inspired by each individual artist's unique vision and interpretation. There will be an extensive variety of contemporary art glass on exhibit including delicate flame-worked sculpture; tactile kiln cast glass, hot formed glass pieces, gauzy pate de verre and glass "painting" with vitreous enamel.

Also on display will be excellent examples of sleek glass cold-worked sculpture. Not to be missed will be the more recognized forms of blown and fused glass.

Showcased artists include Wendy Saxon Brown's figurative glass relief and kiln cast sculptures of the human form and Carole Perry's hand manipulated cane glass tapestries reminiscent of ribbons of hard candy. New to the gallery is the work of up and coming Canadian artist Stephen Pon. His cast sculptures invoke images of ancestral journeys. Also new to the gallery is the work of renowned artist Janis Miltenberger with her organic and sizable flame-worked glass sculptures. Several artists will be on hand to discuss their work and meet with collectors.

The American Studio Glass Movement, which began in the early 1960s, is a relatively new development in the history of glass as an artistic medium. Prior to the movement, glass was made only in large scale industrial settings. American studio glass differs from factory glass in that the individual artist (either alone or in a small

continued above on next column to the right



Morning Sky Over Lake Michigan

11 x 14 inches

## WILLIAM JAMESON WORKSHOPS 2012

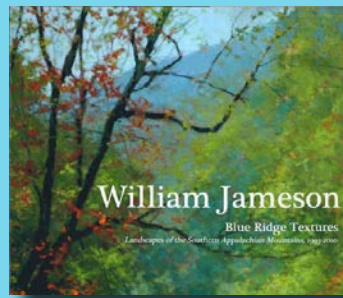
August 20 - 24 "Escape to Lake Michigan"

October 15 - 19 "Fall on the Blue Ridge" (plein air/studio in Saluda, NC)

My workshops are limited in size to 12 participants and early registration is encouraged. Beginners to advanced are welcome and materials lists, directions and schedules will be sent to all registrants. In keeping with today's economy I have changed the rates on some of my workshops.

**Custom Workshops are also Offered for Your Organization, Specifically Designed for Your Location**

Detailed info is available at [www.williamjameson.com](http://www.williamjameson.com) or by calling 828.749.3101.



"Blue Ridge Textures", William Jameson's Landscapes of the Southern Appalachian Mountains - 1993-2010, is now available in hardback and soft cover editions. To purchase your personalized book visit [www.williamjameson.com](http://www.williamjameson.com)!

team) completes all aspects of the creation of a piece, from design through signature. Most studio glass artists will make fewer pieces in their lifetimes than factories like Baccarat or Waterford will make in one day.



Stephen Pon, *Water Boy*, Pate de Verre, Kiln Cast, Hot-worked, Carved Glass, 19" h x 13" w x 13" d

In 1962, Harvey Littleton, professor of art at the University of Wisconsin, and Dominick Labino presented a glass workshop in conjunction with the Toledo Museum of Art. These men are recognized internationally as the "fathers" of the American Studio Glass Movement.

For further information check our NC Commercial Gallery listings, call the gallery at 828/505-8341 or visit ([www.thebendergallery.com](http://www.thebendergallery.com)).

Haven't found the article about your exhibit yet? Did you send it to us? Don't feel left out. Be included.

The deadline each month to submit articles, photos and ads is the 24th of the month prior to the next issue. This will be June 24th for the July 2012 issue and July 24 for the August 2012 issue. Don't put it off. Get your info to us - soon.

## Marketing for Photographers



**Spend your valuable time on your passion and vision.**

Discover the fun, ease and effectiveness of working with a marketing professional!

~ Marketing Plans & Packages

~ Seminars & Workshops

~ Photographic Marketing Presentations

[www.joanvanorman.com](http://www.joanvanorman.com)

828-553-7515

**JOAN VAN ORMAN**  
Focused marketing for photographers