

NC Institutional Galleries

continued from Page 51

The Gallery at Old Salem, in the Frank L. Horton Museum Center, 924 South main Street, Winston-Salem. **Through Aug. 14** - "Art in Clay: Masterworks of North Carolina Earthenware". The exhibit showcases about 120 items of decorated pottery, including slipware, faience, creamware and sculptural bottles, created by the state's first ceramists of European descent. The show is the culmination of a collaborative project that was initiated by Old Salem, along with The Chipstone Foundation and the Caxambas Foundation, both of Milwaukee. Scholars from disciplines including art, archaeology, history and religion worked on the project, creating what is described as "the first major survey of this work and the context in which it was created." Admission: Yes. Hours: Mon.-Sat., 9am-5pm & Sun., 1-5pm, closed major

holidays. Contact: 336/721-7360 or at (www.mesda.org).

The Gallery of the Arts, Commerce Plaza, 411 West Fourth Street, just next door to the Stevens Center, Winston-Salem. **Ongoing** - the facility includes The Community Arts Cafe's Gallery of the Arts, Underground Theatre Gallery, and Arts Alley featuring works from artists of the Triad region of North Carolina including fine art, fine craft, literature, recorded music, videos and any other products available exclusively through CAC. Hours: Mon.-Sat., noon-6pm & during First Friday Gallery Hop. Contact: 336/793-8000 or at (www.communityartscafe.com).

NC Commercial Galleries

Aberdeen

Artistic Impressions, 103 North Poplar Street, Aberdeen. **Ongoing** - Featuring custom stained glass, glass etching, repairs, restoration and church windows, plus a full supply for the hobbyist. Hours: Mon.-Fri., 9am-5pm & Sat., 10am-2pm. Contact: 910/944-1930.

Andrews

Andrews Valley Artist's Gallery, 1158 Main St. #C, corner of Main St. & Oak St. across from the Town Hall & Police Station, Andrews. **Ongoing** - A fine art gallery featuring works by regional artists including works by Kathleen Hall, Penny Johnson, Diane Sims, Dot Rex, Cherie Lowe, Mary Judernatz, and more. Hours: Tue.-Sat., 10am-3pm and by appt. Contact: 828/321-9553, e-mail at (khallavag@verizon.net) or at (www.avartistsgallery.com).

Asheboro

Circa Gallery, 150 Sunset Avenue, Asheboro. **Ongoing** - Featuring works by local, regional, and established artists. Hours: Tue.-Sat., 11am-6pm. Contact: 336/736-8015 or at (www.circagallerync.com).

Little River Art Works, 6417 Abner Rd., Asheboro. **Ongoing** - Featuring stoneware luminaries and hand carved folk art scenes on our pottery by Nora & Barry Walbourn. Hours: by appt. only. Contact: 336/381-4708 or e-mail at (littleliver@rtmc.net).

Asheville

Downtown Asheville, June 3, 5-8pm - "2011 Downtown Art Walks," presented by the Asheville Downtown Gallery Association. Pick up a Downtown Gallery Guide with a map to help you along the way at any downtown gallery, the Chamber of Commerce, or Pack Place. For more information visit (www.ashevilledowntowngalleries.org).

Asheville River Arts District, Asheville. June 3, 5-8pm - "First Friday at Five". The galleries, studios and artists of the Asheville River Arts District invite the public to come view the art in this festive venue. For more information visit (www.RiverArtsDistrict.com).

Aesthetic Gallery, 6 College St., across from Pritchard Park, Asheville. **Ongoing** - Offering a variety of international works, including terracotta ceramics from Viet Nam and stone sculpture from Zimbabwe. In addition, there is an assortment of intricately detailed hand-crafted pictorial textiles from Australia and Lesotho, many of which depict local Asheville scenes. Also available are Australian Aboriginal oil paintings, Bruni Sablan oil paintings from the "Jazz Masters Series," and ceramic tiles from the Southwest (US). Hours: Tue-Sat, noon-6pm. Contact: 828/301-0391 or at (www.aestheticgallery.com).

American Folk Art & Antiques, 64 Biltmore Ave., Asheville. **Ongoing** - Featuring antique folk art, functional and contemporary folk pottery, furniture and paintings. Hours: Mon.-Sat., 10am-6pm & Sun., noon-5pm. Contact: 828/281-2134 or at (www.amerifolk.com).

Appalachian Craft Center, 10 North Spruce St., Asheville. **Ongoing** - Folk pottery, face jugs, traditional crafts, and other collectables. Hours: Mon.-Sat., 10am-5pm. Contact: 828/253-8499

or at (www.appalachiancraftcenter.com).

Ariel Gallery, 19 Biltmore Ave., Asheville. **Ongoing** - Presenting the best in clay, fiber, paper, books, jewelry, metal, sculpture, furniture and glass by members of the Ariel Contemporary Craft Cooperative. A gallery owned and operated by artists. Hours: Tue.-Thur., 10am-6pm; Fri. & Sat., 10am-7pm and Sun., 1-5pm. Contact: 828/236-2660 or at (www.arielcraftgallery.com).

Bellagio, 5 Biltmore Plaza, Historic Biltmore Village, Asheville. **Ongoing** - Featuring exquisitely handcrafted jewelry and clothing. Hours: Mon.-Sat., 10am-6pm & Sun., noon-5pm. Contact: 828/277-8100 or at (www.bellagioarttowear.com).

Bella Vista Art Gallery, 14 Lodge St., Historic Biltmore Village, Asheville. **Ongoing** - Featuring works by regional and national artists in a variety of mediums. Offering contemporary oil paintings, blown glass, pottery, black & white photography, stoneware sculptures, and jewelry. Hours: Mon.-Sat., 10am-6pm & Sun., 10am-4pm. Contact: 828/768-0246 or at (www.BellaVistaArt.com).

BlackBird Frame & Art, 365 Merrimon Avenue, just 3/4 mile north of downtown, Asheville. **Ongoing** - Currently, about 25 painters, photographers and crafters show their work at BlackBird. We also offer expert custom framing. Hours: Mon.-Fri., 10am-6pm & Sat., 10am-3pm. Contact: 828/252-6036 or at (www.BlackBirdFrame.com).

Blue Ridge Frame & Gallery, 545 Merrimon Ave., Asheville. **Ongoing** - Featuring works by local artist Linda Cheek, Ann Vasilik, Carol Bomer, Kelly Wilkinson, and many more. Plus a large selection of prints, posters, and quality custom framing. Hours: Mon.-Fri., 9:30am-6pm & Sat., 10am-4pm. Contact: 828/253-3559.

Blue Spiral 1, 38 Biltmore Ave., Asheville. **Gallery 1, Through June 25** - "Ink and Imagery: Southern Printmaking Invitation". Eight printmakers articulate contemporary imagery through traditional techniques, including works by: Connie Bostic, Teresa Cole, Ke Francis, Fleming Jeffries, Beauvais Lyons, Tom Nakashima, Hannah Skoonberg, and Tanja Softic. **Gallery 2, Through June 25** - "Ward H. Nichols: Painting". A sense of wit and wonder defines paintings of vehicles, tools, structures, and the rural landscape rendered in remarkable detail by one of the region's foremost realists. **Gallery 2, Through June 25** - "Kenneth Baskin + Rudy Rudisell". Metaphoric sculptures in clay & steel reference industry, machinery, and architecture. **Small Format Gallery, Through June 25** - "Will Henry Stevens (1881-1941): An Intimate Look at Nature". Stevens often drew inspiration from woodland details - tree trunks, lichen-covered rocks, mushrooms, or a leaf. **Showcase Gallery, Through June 25** - "Will Henry Stevens (1881-1941): A Southern Modernist". Pioneering non-objective work in the American South, Stevens created poetic and expressive compositions of pure form and color. **Showcase Gallery, Through June 25** - "Rick Beck". Structural forms challenge gravity, creating spatial tension and implying movement in Winkler's contemporary sculpture. **Display Case, Through June 25** - "Marlene Jack". Elegant, curvilinear porcelain with understated design accents to enrich the domestic experience. **Ongoing** - Featuring works in a variety of mediums by regional, national and international artists. Hours: Mon.-Sat., 10am-6pm & Sun., noon-5pm. Contact: 828/251-0202 or at (www.bluespiral1.com).

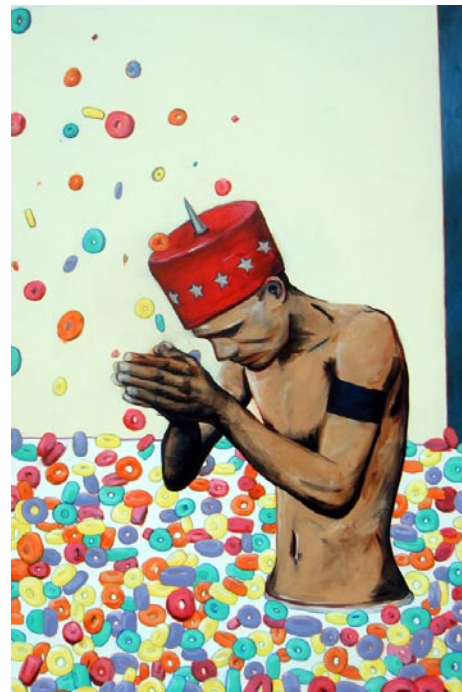
Castell Photography, 2C Wilson Alley off Eagle St., Asheville. **Ongoing** - The gallery is owned by internationally recognized artist Brie Castell, is a unique photographic Salon & Gallery dedicated solely to photo based media. The gallery features the work of Brie Castell, and also hosts several rotating exhibitions each year of other talented photographers. Hours: Wed.-Fri., noon-6pm, Sat., noon-7pm or by appt. Contact: 828.255.1188 or at (www.castellphotography.com).

Chatsworth Art and Antiques, 54 N. Lexington Ave., Asheville. **Ongoing** - Specializing in 19th and early 20th century oils, watercolors and prints. Also jewelry, silver, china, small furniture and fine accessories. Hours: Tue.-Sat., 11am-5pm. Contact: 828.252.6004.

Clayspace Co-op, River Arts District, 119A Roberts St., Asheville. **Ongoing** - The Clayspace Co-op is a cooperative ceramics studio and showroom located in the historic river arts district of Asheville, North Carolina. The main aim of the Clayspace Cooperative is to provide an environment that promotes the artistic growth and success of its members through cooperation and education. Hours: Sale - Dec. 6, 10am-6pm & Dec. 7, 11am-5pm; reg. hours by chance. Contact: 828/279-3811 or at (www.clayspace.org).

Cold River Gallery, 32-A Biltmore Ave., Asheville. **Ongoing** - Welcome to the artistic expression of messages found in ancient wisdom, philosophies and our Earth's gifts, presented as the fine art of Karen Pierre. Working studio, jewelry, pottery. Hours: Tue.-Sat., noon-5pm. Contact: 828/350-0955.

CURVE studios & garden, 6, 9 & 12 Riverside Dr., River Arts District, Asheville. **Ongoing** - Working studios of Constance Williams, Sutherland Handweaving, Pattii Torno, Maria Troya, Kyle Carpenter, Akira Satake, Cynthia Wynn, Fran Welch, Jenny Mastin, Cassie Ryalls & more. Hours: 11am-4pm daily. Contact: 828/388-3526 or at (www.CURVEstudiosNC.com).



Work by Severn Eaton

FW Gallery at Woolworth Walk, 25 Haywood St., Asheville. **June 1 - 29** - "Juicy: New Works by Severn Eaton". A reception will be held on June 3, from 5-7pm. A native of North Carolina, Eaton has taken his life and work in a number of different directions, but art has always provided a solid framework for his thoughts and ideas. Hours: Mon.-Sat., 11am-6pm, closed Tue., & Sun. 11am-5pm. Contact: 828/254-9234 or at (www.woolworthwalk.com).

Gallery Minerva Fine Art, 8 Biltmore Ave., Asheville. **Ongoing** - Featuring painting, sculpture, photography, ceramics and glass by local and regional artists. Hours: Mon.-Thur., 11am-6pm; Fri. & Sat., 11am-8pm; & Sun., noon-5pm. Contact: 828/255-8850 or at (www.galleryminerva.com).

Gallery of the Mountains, Inside the Grove Park Inn, 290 Macon Ave., Asheville. **Ongoing** - Now part of the Grovewood Gallery family, featuring handcrafted wearables, jewelry, pottery and many one-of-a-kind objects. Hours: Mon.-Tue., 9am-6pm; Wed.-Sat., 9am-9pm & Sun., 9am-5pm. Contact: 828/254-2068.

Grovewood Gallery, at the Hometown Shops, Grove Park Inn, 111 Grovewood Road, Asheville. **Ongoing** - Featuring contemporary craft works by Richard Eckerd, Randy Shull, Dan Miller, Michael Costello, Thomas Reardon & Kathleen Doyle, Chris Abell, Mark Taylor, Kirk Schully, Reed Todd, III, Kurt Nielson and others. **Also** - 2nd floor furniture gallery, featuring works by

Kevin Kopil, Lorna Secrest, Michael McClatchy, Anthony Buzak, Marilyn MacEwen, Lisa Jacobs, Chris Horney, and many others. Hours: Mon.-Sat., 10am-5pm. Contact: 828/253-7651 or at (www.grovewood.com).

Jewels That Dance: Jewelry Design, 63 Haywood St., next door to the Library, Asheville. **Ongoing** - Featuring hand-crafted jewelry by some of America's foremost jewelry artists. Hours: Mon.-Sat., 10:30am-6pm. Contact: 828/254-5088 or at (www.jewelsthatdance.com).

Jonas Gerard Fine Art, 240 Clingman Ave., Asheville. **Ongoing** - "Explosions of Color on Canvas". Nationally known artist Jonas Gerard displays his most recent collection of abstract acrylics. His 5,000 square feet studio / gallery is filled with years of passion and dedication. He uses bold, passionate, sweeping gestures of saturated color that form unexpected images of poetic stature. Gerard paints in house to upbeat inspiring music, come unannounced or by appointment. Hours: Mon.-Sun., 10am-6pm & by appt. Contact: 828/350-7711 or at (www.jonasgerard.com).

K2 Studio, 59 College St., Asheville. **Ongoing** - Featuring a unique collection of fine furniture by local artists and pieces from around the world, home accessories and changing fine art exhibitions. Hours: Mon.-Sat., 11am-6pm & Sun. noon-5pm. Contact: 828/250-0500 or at (www.homereDEFINED.com).

Kress Emporium, 19 Patton Ave., Patton & Lexington Aves., downtown Asheville. **Ongoing** - Featuring works by over 100 artists and craftsmen. Hours: Mon.-Sat., 11am-6pm & Sun., noon-6pm. Contact: 828/281-2252 or at (www.thekressemporium.com).

Montford Arts Center, 235 Montford Avenue, Asheville. **Ongoing** - Featuring works in a variety of media by over twenty-five area artists. Watch artists at work. Hours: Tue.-Fri., 11:30am-6pm & Sat., 11:30am-5pm. Contact: 828/777-1014.

Mountain Made, Grove Arcade Public Market, 1 Page Ave., Suite 123, Asheville. **Ongoing** - Featuring the work of over 80 artisans including beautiful pottery, hand painted silks, jewelry, furniture, original oils-pastels-watercolors, stained glass, textile art, blown and fused glass, iron work, gourds, hand made books, and more. Hours: Mon.-Sat., 10am-6pm & Sun., noon-5pm. Contact: 828/350-0307 or at (www.mtnmade.com).

Mudhunter Pottery, 66 Broadway St., Asheville. **Ongoing** - Featuring a rustic gallery shop showcasing functional and sculptural work from over 20 local potters. Our artists' diverse styles ad affordable prices set them apart. Hours: Tue.-Thur., 11am-5:30pm & Fri. & Sat., 11am-6pm. Contact: 828/225-5869.

New Morning Gallery, 7 Boston Way, Historic Biltmore Village, Asheville. **Ongoing** - Featuring fine art and crafts by some of America's finest artists. Hours: Mon.-Sat., 10am-7pm. Contact: 828/274-2831 or at (www.newmorninggallerync.com).

Overström Studio, 35 Wall St., Asheville. **Ongoing** - This architecturally significant gallery exclusively represents work by internationally-recognized designer Michael Overström, who with his wife Susan, present their original, handformed jewelry designs that embrace the designer's Scandinavian heritage and define Asheville's elegant style. Hours: Tue.-Sat., 10am-8pm. Contact: 828/258-1761 or at (www.overstrom.com).

Pura Vida, 39-B Biltmore Ave., Asheville. **Ongoing** - Featuring a space for the senses, offering the finest in artwork appealing to all five senses. Hours: daily noon-10pm. Contact: 828/271-6997 or at (www.pura-vida-asheville.com).

16 Patton Fine Art Gallery, 16 Patton Avenue, Asheville. **Ongoing** - Featuring works by William McCullough, Deborah Squier, John MacKah, Greg Osterhaus, Jerry La Point, Richard Over-smith, Scott Lowery, Dawn Rentz, Laura Young, Margaret Dyer, Suzy Schultz and Stuart Roper. Studio glass by Herman Leonhardt. Hours: Mon.-Sat., 10am-6pm & Sun., 1-6pm. Contact: 828/236-2889 or at (www.16patton.com).

Studio B Custom Framing & Fine Art, 171 Weaverville Hwy., 2.1 miles north of our old location, Asheville. **June 16 - Aug. 2** - "Member Exhibit for the Appalachian Pastel Society". The society was formed in 2006 to promote an understanding and appreciation of soft pastel painting throughout Western North Carolina and the surrounding areas. A reception will be held on June 16, from 5:30-7:30pm. **Ongoing**

continued on Page 53