

NC Commercial Galleries

continued from Page 66

by Hummel, Staffordshire, Tiffany and others are represented. As well as a fine selection of estate jewelry. Since the early 1980's, a major feature of Seaside Art Gallery has been our large collection of original animation art by such studios as Disney, Warner Bros., Hanna-Barbera, United Features Ltd., and other animation studios. Hours: Mon.-Sat., 10am-5pm. Contact: 252/441-5418, 1-800/828-2444 or at (<http://www.seasideart.com/>).

New Bern

Carolina Creations Fine Art and Contemporary Craft Gallery, 317-A Pollock Street, New Bern. NC. **Ongoing** - Featuring fine art and contemporary crafts including pottery, paintings, glass, sculpture, and wood by over 300 of the countries top artists. Hours: Mon.-Sat., 10am-6pm, & Sun., 11am-3pm. Contact: 252/633-4369 or at (www.carolinacreations.com).

Living Color Ceramics, 602 Pollock Street (entrance on Metcalf Street), New Bern. **Ongoing** - Suzanne W. Richey aspires to carry out the North Carolina pottery traditions of making stoneware pots for food service, decor and entertaining. Pots are intended for everyday use and to be as durable as they are enjoyable. Richey makes most pots on the wheel, but occasionally they are hand built. After passing a greenware inspection for quality and appearance, they are then bisqued, decorated and atmospheric fired to cone 10. After passing a final inspection for quality, the pots earn placement in the gallery. Hours: open by appt. only. Contact: 252/675-2011 or at (<https://livingcolorceramics.com/>).

Stardust Gallery, 244 1/2 Middle Street, Suite D, New Bern. **Ongoing** - Featuring works by over 25 NC artists including works in acrylic, oil & watercolor; photography; pen & ink; digital pop art; pottery; weaving; handmade wood and iron creations; lampwork glass jewelry & handblown glass; fine handmade silver jewelry; stained glass; and handwoven baskets. Hours: Tue.-Thur., 11am-5pm & Fri.-Sat., 11am-7pm. Contact: 252/617-0209 or at (<http://www.stardustartgallery.com/>).

The Art Gallery @ Le Bistro & Fine Dining, 3402-B Trent Road, New Bern. **Ongoing** - Featuring works by local artists who explore a wide range of media including Gayle George, Nell Maha, John Dreas, Nada Behr, Doris Walker, Barbara Cornish, B. Chris Munyan, Douglas Rowe, Tess Luper, James King, William K. Henson, John Mitchell, Joan Russell, Betty Brown, Blain Kruger and Dan Wilson. Come in for lunch or dinner, have a glass of wine and peruse the work of these fine artists. Hours: Tue.-Wed., 10am-5pm; Thur.-Sat., 10am-8pm; and Sun., 9am-2pm. Contact: 252/637-7331 or at (<http://www.lebistrofinediningandtheartgallery.com/>).

The Dirty Bird, 244 1/2 Middle Street, New Bern. **Ongoing** - Featuring an eclectic mix of paintings, ceramic items, jewelry and repaired and painted furniture. Hours: Tue.-Thur., 11am-6pm & Fri.-Sat., 10am-5pm. Contact: 252/626-1983.

The Sanctuary Gallery, 2601-A Trent Rd., New Bern. **Ongoing** - The Sanctuary Gallery is New Bern's newest art gallery and is artist owned and operated representing regional and national artists. The fine art and fine craft gallery has a diverse collection of paintings, drawings, sculpture and hand-crafted jewelry. Representing both regional and national artists. The fine art and fine craft gallery has a diverse collection of paintings, drawings, sculpture and hand crafted metal jewelry to complement any taste. Hours: Tue.-Thur., 10am-5pm & Fri.-Sat., 10am-6pm. Contact: 252/571-8562 or at (www.theSanctuary-Gallery.com/).

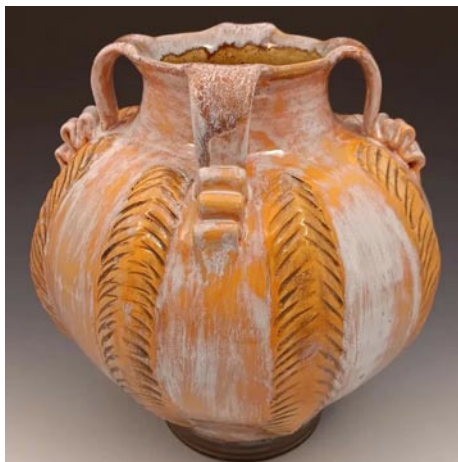
North Wilkesboro

Taupe Gallery, 305 10th Street, North Wilkesboro. **Ongoing** - Nestled in the foothills of the Blue Ridge Mountains, in the small town of North Wilkesboro, lies the secret treasure of Taupe Gallery. With one-of-a-kind handcrafted and hand-picked works from artists from all over, Taupe offers a unique selection sure to appeal to anyone who steps in the building. Owners Jim Lyall and Steve Key are here to welcome you, and are happy to answer any questions or curiosities about art pieces and the artists behind them. Visitors are encouraged to engage, interact with, and experience the artwork in the friendly and colorful environment of Taupe Gallery. Hours: Mon.-Wed. by chance; Thur. & Fri., 10am-5pm; and Sat., 10am-1pm. Contact: 336/990-0148 or at (www.taupegallery.com).

Ocracoke Island

Village Craftsmen, 170 Howard Street, Ocracoke Island. **Ongoing** - We feature pottery, glass, jewelry, kitchen items, musical instruments, wrought iron, baskets, bells, boxes, soaps, accessories, clothes, games, kaleidoscopes, lawn sprinklers, lamps & lampshades, prints, tin ware, pewter items, tiles and much more - all made by American artists. Hours: Mon.-Sat., 10am-4pm & Sun., 10am-2pm. Contact: 252-928-5541 or at (www.villagecraftsmen.com).

Old Fort



Work from Turtle Island Pottery

Turtle Island Pottery, 2782 Bat Cave Road, Old Fort. **Ongoing** - Featuring handmade pottery by Maggie and Freeman Jones, who create one of a kind, functional, decorative stoneware items. From cups to umbrella stands, mirror frames and clocks. Sculptural and inspired by nature, many forms are reminiscent of antique pottery from the arts and crafts movement and art nouveau styles. Hours: Showroom open most Saturdays, call ahead for any day of the week. Contact: 828/669-2713 or at (www.Turtleislandpottery.com).

Oriental

Village Gallery, 300 Hodges Street, Oriental. **Ongoing** - The Village Gallery features the works of more than 40 member and consigned artists. The Gallery is staffed by its resident artists. As a cooperative gallery we offer great values. You buy directly from the juried artists. Hours: Wed.-Sun., 10am-5pm. Contact: 252/249-0300 or at (www.villagegallerync.com).

Outer Banks Area

Pea Island Art Gallery, 27766 NC Hwy. 12, Salvo. **Ongoing** - Featuring handmade works by over 100 Outer Banks artists. Hours: call ahead. Contact: 252/987-2879 or at (www.peaislandartgallery.com).

Swell Art Gallery, 46854 NC 12, Hatteras Island, Buxton. **Ongoing** - Featuring fine art and craft works by local and NC artists. WE also do custom framing. Hours: Tue.-Fri., 11am-5pm & Sat., 11am-4pm. Contact: at (swellartgallery.com).

Pinehurst - Southern Pines Area

Broadhurst Gallery, 2212 Midland Rd., Pinehurst. **Ongoing** - Featuring works by regional, national and international artists. Hours: Tue.-Fri., 11am-5pm & Sat., 1-4pm. Contact: 910/295-4817 or at (www.broadhurstgallery.com).

Hollyhocks Art Gallery, 905 Linden Rd., one mile from Pinehurst next to Elliott's restaurant, Pinehurst. **Ongoing** - Featuring original work by award winning local artists Jane Casnelie, Diane Kraudelt, Irene McFarland, Paula Montgomery, and Robert Gera. Offering a wide range of work from contemporary to traditional, the gallery includes portraiture, vibrant Tuscan scenes, palpable pet portraits, beautiful florals and more, in a wide variety of mediums including oils, acrylics, pastels and unusual black and white washes. Hours: Mon.-Sat., 10am-9:30pm. Contact: 910/255-0665 or at (www.HollyhocksArtGallery.com).

Pittsboro

All In One Pottery, 115 Hobbs Road, Pittsboro. **Ongoing** - The pottery houses an eclectic mix of hand-painted maiolica dinnerware, piffired & raku vases, and hand-crafted musical instruments by Allen McCanless; as well as piffired sculptural ceramic artwork by Louise Hobbs McCanless. Hours: by appointment only. Contact: 919/542-6162

Liquidambar Gallery & Gifts, 80 Hillsboro Street, Pittsboro. **Ongoing** - Featuring the works of gallery owners Kitty and John Meham. The gallery has also been a showcase for over 85 artists, featuring a wide variety of both 2-D and 3-D arts and crafts during the past 10 years. Hours: Wed.-Sat., 10:30am-5:30pm. Contact: 919/542-1773, e-mail at (liquidambargallery@gmail.com) or at (<http://www.liquidambarstudio.com/>).



Work from Mark Hewitt Pottery

Mark Hewitt Pottery, 424 Johnny Burke Road, Pittsboro. **Ongoing** - For thirty-seven years, Mark Hewitt has been making beautiful, functional and decorative pots, using locally sourced materials, and firing them in a large wood-burning kiln here in Pittsboro, NC. You can find a lovely selection of his finely crafted pottery in our barn/showroom. Hours: by appt. only. Contact: 919) 542-2371 or at (<https://hewittpottery.com/>).



Work by Trudy Thomson

Pittsboro Gallery of Arts, 44-A Hillsboro Street, a few steps north of the County Courthouse circle, in Pittsboro. **May 1 - 31** - "Confluence Where Art and Poetry Meet". On May 3, from 6-9pm, the NC Black Socks Poetry Society and friends share poetry inspired by our art. Enjoy refreshments while you view new works in multiple 2-D and 3-D mediums: oil, acrylics, watercolor, pen and ink, pastels, unique prints, photography, furniture and decorative boxes, mosaics, ceramics, polychrome and kintsugi style vessels, basketry, jewelry, fiber arts, sculptural works in clay, wood, stone, steel, and bronze. **Ongoing** - When you visit Pittsboro Gallery of Arts you'll find it's a destination gallery situated in a historic, bustling small town at 44-A Hillsboro Street. This spacious and newly redesigned gallery is owned and operated by local and regional artists, whose purpose is to exhibit and offer an opportunity for art lovers and patrons to see, purchase and collect fine art and fine crafts. Additionally, members wish to raise awareness and promote artistic excellence that contributes to the cultural and economic welfare of the community. Hours: Tue.-Sat. & 1st Sun., 10:30am-5pm. Contact: 919/704-8552 or at (https://www.pittsboroarts.org).

Smelt Art Gallery, 213 Lorax Lane at The Plant, the Chatham Beverage District on the east side of Pittsboro. **Ongoing** - Smelt Art Gallery is a non-traditional art gallery that provides exhibition and event space for multi-cultural, multi-discipline art exhibitions and events. Hours: Sun., noon-6pm, Mon. / Tue./ Wed., 10am - 8pm, Thur./Fri., 10am -10pm, & Sat., noon-10pm. Contact: at (www.chathamartistsguild.org).

Raleigh Area

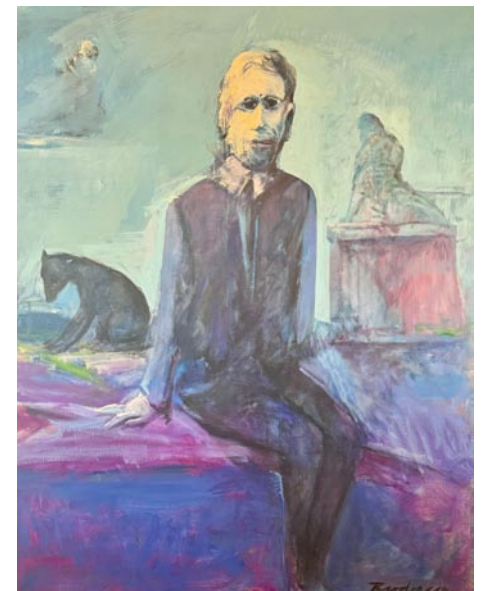
ArtSource Fine Art & Framing, 4421-123 Six Forks Road (behind Bonefish Grill, across from Brother's Cleaners at North Hills...look for the red door), Raleigh. **Ongoing** - ArtSource is a fine art gallery housing over 1,600 works of art by 65+ artists. This award-winning gallery has assisted collectors and businesses in the selection of fine art, custom art pieces and framing for over 20 years. Hours: Tue.-Sat., 10am-6pm or by appt. Contact: 919/787-9533, or at (www.artsource-raleigh.com).

Ashley's Art Gallery, 701 N. Main St, located 12 miles south of Raleigh, Fuquay-Varina. **Ongoing** - Featuring fine art originals by national and local artist including Terry Isaac, Braldt Braldras and John Weiss and reproductions by Pino, Robert Bateman, Carl Brenders, Bev Doolittle and William Mangum. Hours: Mon.-Thur., 11am-6pm & Fri.-Sat. 10:30am-5pm. Contact: 919/552-7533 ext.3 or at (www.ashleyart.com).

Charlotte Russell Contemporary Fine Art Gallery, 2012 A Fairview Road, Five Points area, Raleigh. **Ongoing** - Charlotte Russell Contemporary Fine Art Gallery offers original artworks by emerging and mid-career artists in our newly opened art gallery. Hours: Wed.-Sat., 11am-4pm or by appt. Contact: 415/601-0023 or at (www.charlotterussellcontemporary.com).

City Market Art Collective, 300 Blake Street, Raleigh. **Ongoing** - CMAC was created and founded by sculptor Paris Alexander in 2020. He invited a select group of resident artist to fill this large open gallery space with a variety of works, including paintings, sculpture and mixed media works. There are eight distinct gallery spaces including a dedicated sculpture gallery. There is also a monthly invited guest artist exhibition. Hours: Wed.-Sat., 11am-6pm. Contact: 919/219-0350 or e-mail to (citymarketartistcollective@gmail.com).

Flanders Gallery, 505 S. Blount Street, Raleigh. **Ongoing** - Flanders Gallery is committed to cultivating the careers of emerging artists. Through its rigorous exhibition program, the gallery continues to explore new concepts in contemporary art using various media. Flanders Gallery is dedicated to exhibiting provocative and innovative contemporary art, producing 14-18 exhibits each year both in the gallery and in alternative exhibit spaces. Hours: Wed.-Sat., 11am-6pm. Contact: 919/757-9533 or at (http://flandersartgallery.com).



Work by Robert Broderson (1920-1992)

Gallery C, 540 North Blount Street, Raleigh. **Through May 25** - "Best of North Carolina 2024". Gallery owner, art historian, and North Carolina native Charlene Newsom employs her broad knowledge of NC art to curate an extensive collection celebrating the best and brightest NC artists of past and present. The show includes landmark pieces by influential North Carolina artists. Some of the biggest names and most important North Carolina art from the 19th and 20th century are included in this year's show. **Ongoing** - Gallery C brings talented artists and fine art to the attention of serious private collectors and museums. Since 1985, Gallery C has established itself as one of the Southeast's leading fine art galleries in Raleigh, NC. Open by appt. only. Hours: Tue.-Fri., noon-6pm; Sat., 11am-5pm & Sun., 1-5pm. Contact: 919/828-3165 or at (www.galleryc.net).

Glenwood Fine Art, 20 Glenwood Avenue, in the heart of Glenwood South, Raleigh. **Ongoing** - Featuring works by Beth Barger, Diana Coidan, Cecilia Guitarte, Emilio Garofalo, Linda Hauser, Eileen Hendren, Nicole Kennedy, Ed King, Patricia Pitman, Debbie Sherrod, Kathy Thompson, Lyudmila Tomova. Hours: by appt. or when the open flag is out when two of the 12 artists are in the studio. Contact: 919/395-6877 or at (www.glenwoodfineart.com).

Glenwood Gallery Art & Antiques, 610 W. Johnson St., Raleigh. **Ongoing** - Featuring works by Edwin D. Alexander, Barbara Evans, Michael Manas, Nancee Clark, Michael Van Horn, Rob Cox, Jim Green, Stan Strikland, Mark Tomczyk. Hours: Call. Contact: 919/829-7202.

Grace Li Wang Gallery and Studio, 14 Glenwood Ave. Ste. #27, Raleigh. **Ongoing** - Featuring works by Grace Li Wang. Hours: by appt. Contact: 919-412-6803 or e-mail to (graceliwang@gmail.com).

continued on Page 68