

# NC Commercial Galleries

continued from Page 61

Mountain. **Ongoing** - Specializing in photography and offering paintings, pottery, jewelry and sculpture has opened in Cedar Mountain, North Carolina. In addition to Rob Travis's photography, the gallery artists include Lucy Clark (pottery), Ray Byram (paintings) and Hanes Hoffman (sculpture). In addition to the four presenting artists, Blue Moon Gallery will hold exhibits that rotate on a two month basis. The gallery is located at. Hours: Wed.-Sat., 10am-5pm or by appt. Contact: 828/565-2566 or at ([www.BlueMoonGalleryNC.com](http://www.BlueMoonGalleryNC.com)).

**Drew Deane Gallery**, 114 W. Main St., across from City Hall and Brevard Fire Station, Brevard. **Ongoing** - Featuring a premier emerging contemporary fine arts gallery in Western North Carolina. Including works by: Devin Burgess, Jerry Cutler, Drew Deane, Greg Fidler, John Geci, Richard Lane, Courtney Erin Martin and Mark Mulfinger. Hours: Tue.-Sat., 10am-5pm or by appt. Contact: 828/877-5272 or at ([www.drewdeanegallery.com](http://www.drewdeanegallery.com)).

**Duckpond Pottery**, 2398 Greenville Hwy., Brevard. **Ongoing** - Duckpond Pottery specializes in custom, handcrafted sinks and tiles. The pottery also features handcrafted kitchenware and accent pieces for both indoors and out. Torches topped with custom faces are potter Nick Friedman's signature pieces. The deck plays host to weekly concerts and a new coffeeshop. Hours: Tue.-Sat., 10am-6pm or by appt. Contact: 828/883-4512 or at ([www.duckpondpotter.etsy.com](http://www.duckpondpotter.etsy.com)).

**Gallery on Main**, 36 East Main Street, Brevard. **Ongoing** - Featuring original art, limited edition prints, collectibles and gifts. Hours: Mon.-Sat., 10am-5pm. Contact: 828/885-7299 or at ([www.galleryonmain.com](http://www.galleryonmain.com)).

**Gravy**, 17 W. Main St., Brevard. **Ongoing** - An artisan and retail market, benefiting the Boys and Girls Club of Transylvania County. Gravy's 71 dealers donate at least 15% of their profits to our local club. Hours: Mon.-Sat., 10am-5pm. Contact: 828/862-4900 or at ([www.gravyon-main.blogspot.com](http://www.gravyon-main.blogspot.com)).

**Hollingsworth Gallery**, 147 E. Main Street, between Main Street Ltd. and Quotations Coffee Cafe, Brevard. **Ongoing** - Showcasing local and emerging artists. Hours: call for hours. Contact: 828/884-4974.

**Jordan Street Arts**, 25 W. Jordan Street, Brevard. **Ongoing** - Jordan Street Arts is a new cooperative art gallery featuring fine art and skilled craftsmanship of area artists. "The goal of Jordan Street Arts is to create a vibrant, interactive, family-friendly environment for both artists and patrons" says co-owners Keith and Amy Braman. "We encourage our artists to be present and active in the gallery, so that patrons can meet and interact with the artist(s) as they fall in love with the pieces they create." Hours: Tue.-Sat., 10am-6pm. Contact: 828/384-3816 or follow the Jordan Street Arts' page on Facebook.

**Mountain Forest Pottery**, 2395 Greenville Hwy., Brevard. **Ongoing** - Offering functional and whimsical pottery made on site by artist Mary Murray. "Handmade comes to life" in the homey gallery, offering the work of many regional artists - handmade teddy bears, jewelry, quilts, folk art, sculpture, drawings, and paintings. Recipes accompany many pottery pieces that are designed for baking apples, pies, and other dishes. Hours: Mon.-Sat., 10am-5pm & Sun., 1-5pm. Contact: 828/885-2149 or at ([www.scenic276.com](http://www.scenic276.com)).

**Mud Dabber's Pottery and Crafts**, 3623 Greenville Hwy., Brevard. **Ongoing** - Featuring the work of six family members including: John O., Sybil, John E., Carol and Brandon (Brad), and Becky Dodson and friends Phillip Johnston, Carolyn Becker, Susan Peterson, and Matthew Nevenschwander, Elizabeth Galloway, Jonlyn Parker, Charlie Parker, Mary Ey, and Sue Jones. Hours: Mon.-Sat., 10am-6pm & Sun., 1-5pm. Contact: 828/884-5131 or at ([www.muddabbers.com](http://www.muddabbers.com)).

**Red Wolf Gallery**, 8 E. Main St., Brevard. **Ongoing** - Featuring original works of art by over twenty regional artists in a historic downtown building. Hours: Mon.-Sat., 10am-5pm and Sun., 1-5pm and by appt. Contact: 828/862-8620.

**The Haen Gallery**, 200 King Street, Brevard Lumbeyard Arts District, Brevard. **Ongoing** - Committed to providing access to stunning and unique artwork for discerning collectors and our community in general. Our offerings will reflect the character and sensibilities of this wonderful region. Hours: Mon.-Fri., 10am-6pm;

Sat., 11am-6pm; and Sun., noon-5pm. Contact: 828/883-3268 or at ([www.haengallery.com](http://www.haengallery.com)).

**Twin Willows Studio**, 15 Crestview Dr., Brevard. **Ongoing** - Featuring the works of Ann DerGara. Hours: by appt. only. Contact: 828/877-5275.

## Burnsville/ Micaville

**The Design Gallery**, 7 South Main St., Burnsville. **Ongoing** - Feature fine arts and crafts consisting of original paintings, etchings, prints, art glass, pottery, wood work, furniture, textiles, sculpture, metals, book art and jewelry. In addition we have furniture, lighting, home accents and gifts. Hours: Mon.-Sat., 10am-5pm. Contact: 828/678-9869.

## Calabash - Ocean Isle Beach

**Jewelry by Wendy-Beach House Fine Arts Gallery**, 10152 Beach Drive, Unit 6, Calabash. **Ongoing** - Wendy specializes in unique designs of handcrafted jewelry of sterling silver, genuine beach glass and fine gems at affordable prices. Among forty five regional artists on display at the gallery are watercolorists Julia Frost of Jacksonville, NC, and Marilyn Pounds of Ocean Isle Beach, photographer Marko Angelo of Calabash, NC, and now introducing the pottery of Tristan Mardall, Carolina Shores, NC. Hours Tue.-Sat., 10am-4pm. Contact: 910/575-0024 or at ([www.jewelrybyWendy.com](http://www.jewelrybyWendy.com)).

**Phthalo Blue Gallery**, 7199 Beach Drive, Ocean Isle Beach. **Ongoing** - The gallery is an artist owned, art gallery featuring local and national artists. Hours: Tue.-Fri., 10am-4pm & Sat., 10am-2pm. Contact: 910/209-6025 or at (<http://www.phthaloibulegallery.com>).

**Sea Gallery**, 6885 Beach Dr., SW Route 199, Ocean Isle Beach. **Ongoing** - Featuring fine art by local, regional and nationally acclaimed artists. Tasteful and inviting original oils, Gicleés on canvas, watercolors, and charcoals are presented in our 7,000 square-foot gallery. Sculpture and pottery are also offered. Artists we exhibit are: Phyllis Arnold, Ken Buckner, Terry Buckner, Karen Edgar, Gary Halberstadt, V. Ryan Lauzon, Nancy Hughes Miller, Miller Pope, Tom Wooldridge, and Mary M. Wright. Hours: Mon.-Fri., 10am-5pm. Contact: 910/575-8222.



Work by Ann Parks McCray

**Sunset River Marketplace**, 10283 Beach Drive, SW, Calabash. **May 4 - June 16** - "Anne & Ann: Abstracting Nature in Metal and Oils," a dynamic two-woman exhibition of works by Anne Cunningham and Ann Parks McCray. A reception will be held on May 4, from 5-7pm. According to an artists' statement about the works, Anne Cunningham and Ann Parks McCray often unknowingly mirror each other's art. It's only after a studio visit or glimpse of a Facebook photo that they realize they've done it again. These two beach girls are called by the ocean and revel in being surrounded by light. **Ongoing** - A unique eclectic gallery showcasing over 200 local artists in virtually every medium. Enjoy gourmet coffee, tea and treats as you stroll through the 10,000 square-foot space. Art classes and custom framing are offered on-site. Hours: Mon.-Sat., 10am-5pm. Contact: 910/575-5999 or at ([www.SunsetRiverMarketplace.com](http://www.SunsetRiverMarketplace.com)).

ALTERNATE ART SPACES - Ocean Isle Beach **Silver Coast Winery**, 6680 Barbeque Rd., Ocean Isle Beach. **Ongoing** - Art gallery featuring local artists, David McCune, Steven Schuman, and Suzanne C. Hunady, as well as daily tours, tastings and the art of wine making. Hours Mon.-Sat., 11-6pm & Sun. 12-5pm. Contact: 910/287-2800 or at ([www.silvercoastwinery.com](http://www.silvercoastwinery.com)).

## Cary

**Stonehaven Jewelry Gallery**, 101 Ledge Stone Way, Stonecreek Village Shopping Center, corner of Davis Drive and High House Rd., Cary. **Ongoing** - Featuring custom design,

jewelry repair, original oil paintings, limited edition prints, and fine art glass. Hours: Mon.-Fri., 10am-6pm & Sat., 10am-5pm. Contact: 919/462-8888 or at ([www.stonehavenjewelry.com](http://www.stonehavenjewelry.com)).

**The Nature of Art Gallery**, 106-D Colonades Way, Waverly Place Shopping Center, Cary. **Ongoing** - Featuring whimsical and eclectic artworks for interiors and gardens with a native flair. Hours: Mon.-Sat., 10am-6pm, except Wed. till 9pm. Contact: 919/859-6004.

**Village Art Circle**, 200 South Academy Street, Cary. **Ongoing** - Our gallery is located in Ashworth Village in historic downtown Cary, behind Ashworth Drug in the plaza, corner of Academy and Chatham Streets. Parking is available in the plaza in front of the gallery as well as on Chatham and Academy Streets, and on Waldo Street. Hours: Wed.-Sat., 11am-5pm. Contact: ([www.villageartcircle.com](http://www.villageartcircle.com)).

## Celo

**Toe River Crafts**, 6274 on Hwy. 80 South, 7 miles north of the Blue Ridge Parkway, Celo. **Ongoing** - Providing a showcase for handmade objects in many media such as clay, wood, fiber, glass, paper, metal, jewelry, photography, printmaking, and painting. Hours: e-mail for hours. Contact: e-mail at ([toerivercrafts@gmail.com](mailto:toerivercrafts@gmail.com)) or at (<http://www.toerivercrafts.com/>).

## Chapel Hill - Carrboro

**Chapel Hill/Carrboro Art Walks - second Friday of each month from 6-9pm. Info at ([www.2ndfridayartwalk.com](http://www.2ndfridayartwalk.com)).**

**Animation and Fine Art Galleries**, University Mall, 201 S Estes Dr., Chapel Hill. **Ongoing** - Featuring contemporary works of art and animation art. Hours: Mon.-Sat., 10am-6pm. Contact: 919/968-8008 or at ([www.animationandfineart.com](http://www.animationandfineart.com)).

**Black Mountain Gallery**, 1800 #9 E. Franklin Street, Eastgate Shopping Center, Chapel Hill. **Ongoing** - Featuring handwrought designer jewelry by artisans from throughout the United States. Hours: Mon.-Sat., 10am-6pm. Contact: 919/967-8101.

**Blackwood Station Gallery**, 6113 Hwy. 86N., Chapel Hill. **Ongoing** - Featuring functional & fine art, sculpture and fine art prints. Hours: Tue.-Fri., 11am-7pm; Sat., 10am-6pm, & Sun., noon-6pm. Contact: 919/968-1360.

**Cameron's**, University Mall, Chapel Hill. **Ongoing** - Featuring contemporary American crafts and pottery, folk art and functional art objects. Hours: Mon.-Sat., 10am-9pm & Sun., 1-6pm. Contact: 919/942-5554.

**Chapellier Fine Art**, 105 Arlen Park Drive, Chapel Hill. **Ongoing** - Fine, investment quality 19th & 20th century American art. Hours: Mon. - Fri. by appointment. Contact: 919/967-9960 or at ([www.citysearch.com/rdu/chapellier/](http://www.citysearch.com/rdu/chapellier/)).

**Dirt Road Gallery**, 8218 Bright's Way, Chapel Hill. **Ongoing** - Featuring handcrafted items - including paintings, carvings, molas, textiles & fabrics, ceramics, beads and jewelry from West Africa, the Middle East, Central America, and the US collected over years of traveling. Hours: Sat. & Sun., 11am-6pm & by appt. Contact: 919/933-6999 or at ([www.dirtroadgallery.net](http://www.dirtroadgallery.net)).

**N.C. Crafts Gallery**, 212 W. Main St., corner of Weaver and West Main Sts., Carrboro. **Ongoing** - Offering a wide assortment of items handcrafted by North Carolina artisans. You'll find contemporary and traditional pottery, blown glass, wood, jewelry, metalwork, toys, folk art, garden sculpture, kaleidoscopes, baskets, fiber art and more. The Gallery currently carries the work of more than 500 North Carolinians, from the mountains to the shore. The gallery also hosts two shows a month. Shows begin the first of each month and give the featured artist the opportunity to showcase an entire body of work. Hours: Mon.-Sat., 10am-6pm & Sun., 1-4pm. Contact: 919/942-4048 or at (<http://nccraftsgallery.com/>).

**Studio 91 Fine Art Gallery**, Meadowmont Village, Chapel Hill. **Ongoing** - Featuring works by Jean Abadie, Thomas Arvid, Dimitri Danish, Michael Flohr, Edward Lewis, and Fabian Perez. Hours: Mon.-Thur., 10am-6pm; Fri., 10am-8pm & Sat., 10am-5pm. Contact: 919/933-3700.

## Charlotte Area

**North Davidson Street Arts District Gallery Crawl - From 6-9pm on the 1st & 3rd Fridays of each month.**

**Uptown Gallery Crawl - From 6-8pm on the 1st Friday of each month.**

**SouthEnd Gallery Crawl - From 6-9pm on the 1st Friday of each month.**

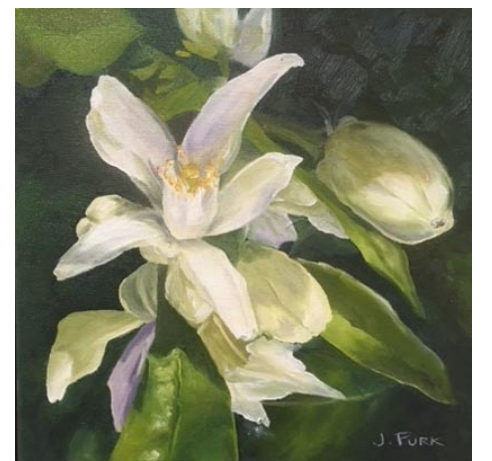
**Allison Sprock Fine Art**, 600 Queens Rd., the gallery shares space with The Nichols Company in one of Myers Park's oldest houses, Charlotte. **Ongoing** - The gallery represents many well-known artists from all over the world. Some of the featured artists are very famous; others are emerging including: Andre Bludov, Constantin Chatov, Marc Chatov, Roman Chatov, Gee Gee Collins, Larry Davis, Noah Desmond, Margaret Dyer, Sabre Esler, Stephen Fry, Benjamin Hollingsworth, Linda James, Dimitri Kourouniotis, Stan Mullins, Anne Neilson, Becky Ollinger, Spencer Reid, Felice Sharp, Tracy Sharp, Louis St. Lewis, Elizabeth Stehling, Harry Stewart, Cate Wagoner, Karen Weihs, Alice Williams, Sean Williams, and Kathy Wochele. Hours: Mon.-Sat., 10am-6pm. Contact: 404/274-5829 or visit ([www.allison-sprockfineart.com](http://www.allison-sprockfineart.com)).

**Anne Neilson Fine Art**, to Shops of Morrison in SouthPark Charlotte. **Ongoing** - The gallery represents over 30 esteemed national and international artists, as well as works by noted painter and author Anne H. Neilson. The gallery is an outgrowth of Neilson's ever-growing popularity sparked by her Angels Series paintings and book. Hours: Mon.-Fri., 10am-5pm; Sat., 11am-3pm & by appt. Contact: 980/253-9566 or at (<http://www.anneneilsonfineart.com/ourgallery>).

**Art House Studios**, 3103 Cullman Ave., off 36th Street in the NoDa District, Charlotte. **Ongoing** - Featuring a complex of working studios by area artists. Hours: during Gallery Crawls and by appt. Contact: 704/577-4587 or e-mail at ([arthouse\\_noda@earthlink.net](mailto:arthouse_noda@earthlink.net)).

**Artists' Atelier Carolina**, located in the Pentes Artworks Gallery & Studios bldg., 1346 Hill Rd., Charlotte. **Ongoing** - Featuring works by Jim Fales, Fay M. Miller, Jack Pentes, Betty G. Robinson, Gregory Weston, and Peggy Hutson Weston. Hours: by appt. Contact: 704/552-6200.

**Ben Owen Pottery Gallery**, inside The Ritz-Carlton, Charlotte, 201 East Trade Street, Charlotte. **Ongoing** - The gallery offers 75-100 one-of-a-kind pieces of Ben Owen III pottery, with prices beginning at \$45. Works will range from pots, vases, jars, bowls and platters to major showpieces and spectacular larger works of art. All items are hand-created by Ben Owen, who also will make special appearances at The Ritz-Carlton, Charlotte for 2011 art weekends and art demonstrations. Hours: open daily from 9am-6pm. Contact: 704/547-2244 or at (<http://www.ritzcarlton.com/en/Properties/Charlotte/Default.htm>).



Work by Joni Purk

**Charlotte Fine Art Gallery**, 7510 Pineville-Matthews Road, located in South Charlotte's Carmel Village at the corner of Pineville-Matthews and Carmel Road, Charlotte. **May 1 - 31** - "Spring-time Floral Exhibition". Represented artists of CFA will have floral works on display during the month of May. Works in floral include acrylic, oil, watercolor, wood, jewelry and pottery. A reception will be held on May 5, from 5:30-8:30pm. Also featured at reception... "Gallery Exhibit of Wood Art by Charlotte artist Dave Terpening". Charlotte artist, David Terpening is the most meticulous wood turner you will ever see. Creating wood turned vessels, boxes and furniture. This is your chance to own one of his special creations. **Ongoing** - Original works of art from award-winning artists across the United States, as well as the Carolinas. Nationally and internationally-recognized artists in 2-and 3-dimensional fine art. Specializing in a wide array of media and styles represented: Representational, Impressionism, Expressionism, Abstraction / Paintings, Sculpture, Prints. Consulting Services for individual and corporate clients, as well as, private event opportunities. Hours: Tues 10am-4pm; Wed., 10am-9pm; Thur.-Sat., 10am-6pm or by appt. Contact: call 704/541-0741 or at ([www.CharlotteFineArt.com](http://www.CharlotteFineArt.com)).

continued on Page 65