

Pottery 101 in Salisbury, NC, Offers Works from Dalton Pottery

Pottery 101 in Salisbury, NC, will present *Dalton Pottery: Partners in Clay*, featuring works by Linda and Jim Dalton, on view from May 1 - 23, 2015. A reception will be held on May 1, from 6-9pm.

Linda and Jim Dalton are a husband and wife team of ceramic artists who create one of a kind functional and decorative pottery, both wheel thrown and hand built, at their studio just 15 minutes north of Pinehurst, NC.

Linda has been fascinated with pottery since first seeing pottery made while visiting Seagrove, NC, more than 35 years ago. This fascination led to a pottery wheel in the corner of her garage which eventually took over the whole garage.

In 2003 the Daltons moved to their current location, where they built a studio before building their home. Jim says they had their priorities in place!



Work from Dalton Pottery

For further information check our NC Commercial Gallery listings or call the gallery at 704/209-1632.

Rockingham County Arts Council in Wentworth, NC, Presents Mayfest in Rockingham - May 16, 2015

The Rockingham County Arts Council in Wentworth, NC, will present a first-time event, Mayfest in Rockingham, at the Dan River Art Market & Gallery, on May 16, 2015, from 10am-4pm.

A Celebration of Spring, Mayfest in Rockingham is a one-day event, filled with crafts, artist demonstrations, hands-on projects for adults, kids art and music area, live music performances, food, flowers and herbs, raffle items, friends and community fun. Mayfest includes many of the great things in Rockingham County!

Enjoy make-and-take art projects, in time for next weekend's Mother's Day. Photographers are featuring a make and take plus professional fun portraits and more.

The event is free for the public to attend, raffle items are available to win. Raffle

proceeds go to support free art events in Rockingham County, including Mayfest!

Spend a Springtime Saturday and celebrate our local creative economy with artists around the Dan River Art Market & Gallery.

Located at the heart of the county in historic Wentworth, the Dan River Art Market & Gallery is operated by the Rockingham County Arts Council to provide avenue for local artists. The Rockingham County Arts Council is the focal point/umbrella organization for the arts and information about the arts in Rockingham County.

For further information check our NC Institutional Gallery listings, call the Council at 336/349-4039 or visit (<http://artsinrockingham.org>).

Asheville Art Museum in Asheville, NC, Offers Juried Exhibit of New Media Art

The Asheville Art Museum in Asheville, NC, is presenting *Prime Time: Third Annual New Media Juried Exhibition*, on view through Aug. 2, 2015. Artists from across North Carolina, South Carolina, Tennessee and Georgia responded to a call to artists in December 2014 and submitted their work for *Prime Time: Third Annual New Media Juried Exhibition*. Fourteen finalists, at various stages in their careers, were chosen for inclusion by a jury. Played in a 53-minute loop, the works featured in *Prime Time* highlight a variety of approaches to single channel, screen-based new media, including stop action and hand-drawn animation, experimental narrative film, digital décollage and performance-based video.

Since the late-20th century, new media art has become an innovative and integral part of the contemporary art world. New media artists use technologies to create works that explore different ideas and aspects of artistic expression. These new technologies include computers, information and communications technology, virtual or immersive environments, sound engineering and more. They are the brushes and pens of these artists.

Two works in the selection are performance-based. Patricia Earnhardt's *Perfected* confronts our society's obsession with youthful appearances by using transparent tape to reconstruct and reimagine her face. In *Shelf Space*, Mika Agari draws attention to the spaces of consumer culture by disrupting the conventional order and flow in a common grocery store.

Some videos rely on the artist's hand, as in *Oy Vey TV* by Michael Siporin Levine, which showcases the artist's talent in print-making and hand-drawn animation. Other works borrow imagery from pre-existing sources and at times manipulate it to create new meaning. In Blazo Kovacevic's work *Probe*, the artist captures airport security



Eric Juth, "iWash" (October 2014), image still, 2014. screening footage and shares it with an art-going public, posing questions about privacy, personal freedom and the capacity for beauty and abstraction in everyday x-ray technology.

Eric Juth's *iWash* (October 2014) juxtaposes screen recordings taken from Internet browsing sessions and peels away layers of visual information to create a mesmerizing montage of color and pattern that resembles an Abstract Expressionist painting.

A number of works are narrative in nature, telling stories of characters both real and imagined. While Joel Tauber's *Pumping* imagines a new history of Los Angeles in the age of trains, Erin Colleen Johnson's *Hole* tells the artist's story of reaching out to an ice fisherman in Minnesota to recreate the magic of ice fishing in her own surroundings. As a whole, these artists demonstrate the vibrant interest in new media in this region and share their contributions to this ever-evolving art form.

Artists featured in this exhibition include: Mika Agari (Nashville, TN), Black & Jones (Clarksville, TN), Craig Coleman (Macon, GA), Patricia Earnhardt (Nashville, TN), David Hellams (Nashville, TN), Erin Colleen Johnson (Atlanta, GA), Eric Juth (Winston-Salem, NC), Blazo Kovacevic (Savannah, GA), Michael Siporin Levine (Athens, GA), Lisa McCarty (Durham, NC), Leigh Ann Parrish (Waynesville,

continued above on next column to the right

Eck McCannless Pottery

Demonstrations available anytime!

Eck is a second-generation Seagrove potter who has spent nearly 20 years perfecting his craft. He specializes in **Agaware, Crystalline and Stoneware.**

6077 Old US Hwy 220
Seagrove, NC 27341
(336) 873-7412

www.EckMcCannless.webs.com



Carolina Bronze Sculpture

The East Coast's Premier Art Foundry



Total Project Management From Initial Concept to Finished Sculpture

Ceramic Shell Cast Bronze and Aluminum
No Bake Sand Molding
Digitally Integrated Fabrication
3D Scanning, Enlargement and Reduction
Rapid Prototyping, CAD, 3D Modeling
Restoration, Repair, Installation
Consultation, In-House Sculpting

Visit our web page for more information!

www.carolinabronze.com
6108 Maple Springs Road
Seagrove, NC 27341, 336.873.8291

NC), IlaSahai Prouty (Bakersville, NC), Nicol Eltzroth Rosendorf (Atlanta, GA) and Joel Tauber (Winston-Salem, NC).

This exhibition was organized by the Asheville Art Museum. Members of the jury included Carolyn Grosch, Assistant Curator, Asheville Art Museum; George Fifield, Director, Boston Cyberarts Inc.; Candace Reilly, Adult Programs Manager, Asheville Art Museum; and Morgan Santander, Artist and Former Professor at Savannah College of Art and Design.

Founded by artists in 1948 in Asheville, NC, the Asheville Art Museum annually presents an exciting, inviting and active schedule of exhibitions and public programs

based on its permanent collection of 20th and 21st century American art. Any visit will also include experiences with works of significance to Western North Carolina's cultural heritage including Studio Craft, Black Mountain College and Cherokee artists. Special exhibitions feature renowned regional and national artists and explore issues of enduring interest. The Museum also offers a wide array of innovative, inspiring and entertaining educational programs for people of all ages.

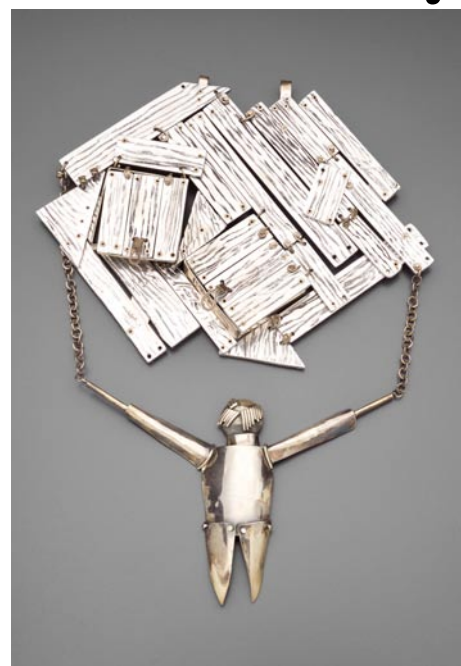
For further information check our NC Institutional Gallery listings, or visit (www.ashevilleart.org).

Asheville Art Museum Presents an Exhibition of Studio Jewelry

The Asheville Art Museum in Asheville, NC, is presenting *Flourish: Selected Jewelry From the Daphne Farago Collection*, a dazzling exhibition on view through Aug. 16, 2015. The exhibit showcases a selection of jewelry carefully curated over many years by the keen-eyed collector Daphne Farago and reveals the breadth of studio jewelry as the movement evolved. A self-conscious practice, studio jewelry emerged following WWII as a response to commercially available adornment and as a marriage of fine craft and art.

The exhibition is grouped thematically to reflect the varying disciplines of studio jewelry, beginning with the Studio Craft Movement of the mid-20th century. The Studio Craft Movement derived directly from the Arts and Crafts Movements of Europe and the United States, using handmade techniques and aesthetics as a means of reflecting the changing world. Much of the work in the exhibition mirrors the stylistic shifts in the art world from the 1940s to today, including constructivism, mid-century modernism, pop-art, narrative and funk.

The works, like the artists, are varied and have been selected to reflect a broad range of ideas, with nuances that show the possibilities of the practice. They are united by the vision of the collector. Featured art-



La Boheme Pendant, about 1995-2000, Laurie J. Hall, American, born in 1944, silver, aluminum, 8 1/4 x 6 1/2 x 3/4 inches. Museum of Fine Arts, Boston, The Daphne Farago Collection 2006.230

ists include Ed Wiener, Louis Mueller, Art Smith, Robert W. Ebendorf, John Prip, Roy Lichtenstein, Mary Lee Hu, Arline M. Fisch

continued on Page 41