

Carolina Clay Gallery, Freshfields Village, 565 Freshfields Dr., located at the intersection of Seabrook and Kiawah Islands, 15 miles south of Charleston, Johns Island. **Ongoing** - Carolina Clay Gallery features the work of over 100 North and South Carolina potters and glass artists. Also available are the wonderful, whimsical life size copper frogs of Charles and Zan Smith. Hours: Mon.-Sat. 10am-8pm, & Sun., 11am-6pm. Contact: 843/243-0043 or at (www.carolinaclaygallery.com).

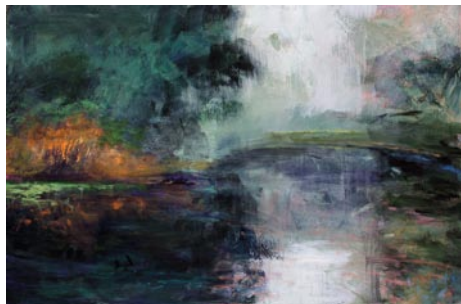
Carolina Antique Maps and Prints LLC, 91 Church St., Charleston. **Ongoing** - Featuring Antique Maps and Prints from the 16th to the 19th century. Hours: Tue.-Sat., 11am-5pm or by appt. Contact: 843/722-4773 or at (www.carolinaantiqueprints.com).

Charleston Crafts, 161 Church Street, across from Tommy Condon's, one block south of Market St., Charleston. **Ongoing** - Charleston Crafts is the longest operating craft cooperative in Charleston, featuring only items designed and created by SC artists. Gallery showcases a blend of contemporary and traditional craft media plus photography. Hours: Sun.-Thur., 10am-6pm & Fri.-Sat., 10am-8pm. Contact: 843/723-2938 or at (www.CharlestonCrafts.org).

COCO VIVO interior and fine art for relaxed living, Gallery Row, 25 Broad St., Charleston. **Ongoing** - Featuring works by Tony van Hasselt, Mitch Billis, Patricia Roth and Roger Milinowski. Also representing jewelry designer Betty Holland and photographer Sandy Logan. Hours: Mon.-Sat., 9:30am-5:30 & Fri. till 8pm. Contact: 843/720-4027 or at (www.coastandcottage.com).

Coleman Fine Art, 79 Church St., Charleston. **Ongoing** - Both a fine art gallery, and a gold leaf studio, Coleman Fine Art has been representing regional and national artists for over 30 years. The Coleman studio produces the finest handcrafted gilt frames, and offers gilding restoration. The gallery specializes in Contemporary American paintings of both the American Impressionist and Realist schools. We proudly represent watercolor painter Mary Whyte, whose paintings focus on the life and culture of the indigenous people of the South Carolina Lowcountry. Currently we represent some of the country's leading plein-air painters, John Cosby, Gil Dellinger, Marc R. Hanson, Kevin Macpherson, Gregory Packard, George Strickland, and Mary Whyte. Hours: Mon., 10am-4pm; Tue.-Sat., 10am-6pm or by appt. Contact: 843/853-7000 or at (www.colemanfineart.com).

Cone 10 Studios, 1080-B Morrison Drive, in the heart of NoMo, Charleston. **Through May 18** - "Exquisite Conversations: Fire is Hot," featuring works by Holly Benton. Benton experiments with firing techniques and glaze recipes offering expansive variation on her organic sculptural and functional forms. She has lead group 'pit fires' at her home for our clay community while also regularly firing the on-site, cone 10, gas-reduction kiln. **Ongoing** - A studio and gallery of local potters and sculptors. We also offer classes in beginning to intermediate wheel throwing and clay sculpture. Hours: Mon.-Sat., 11am-5pm & Sun., 1-5pm. Contact: 843/853-3345 or at (www.cone10studios.com).



Work by Linda Fantuzzo

Corrigan Gallery, 62 Queen Street, Charleston. **May 4 - 30** - "Landscape Reconfigured," featuring new works by Linda Fantuzzo. A reception will be held on May 4, from 5-8pm. Fantuzzo's soft, mysterious, elegant paintings are reminiscent of Joseph Mallord William Turner's waterscapes. **Ongoing** - Contemporary fine art including paintings, photography, prints and sculpture. Now showing works by Manning Williams, Mary Walker, Lynne Riding, Duke Hagerty, Gordon Nicholson, Tim Fensch, Max Miller, John Moore, Kristi Ryba, Lolly Koon, Kevin Bruce Parent, Lese Corrigan and Sue Simons Wallace. Located in the heart of the downtown historic district of Charleston's French Quarter. Artist at work on location - work in progress to be viewed. Hours: Mon.-Sat., 10am-5pm or by chance & appt. Contact: 843/722-9868 or at (www.corrigan-gallery.com).

Courtyard Art Gallery, 149 1/2 East Bay Street, Charleston. **Ongoing** - Featuring works by Veronique Aniel, Melissa Breeland, Mary Ann Bridgman, Renee Bruce, Beverly Brunswig,

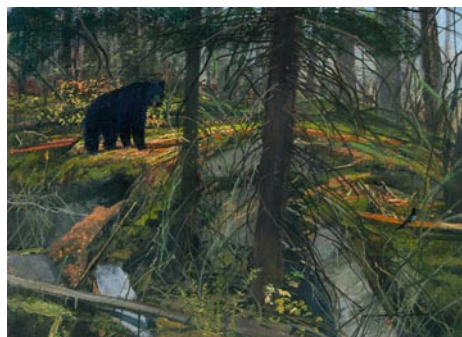
Wilma Cantey, Carole Carberry, Linda Churchill, Christine Crosby, Judy Jacobs, Alix Kassing, Jennifer Koach, Tug Mathisen, Yvonne Rousseau, Suzy Shealy, Coleen Stioff, and Tom Tremaine. Hours: Mon.-Sat., 10am-5pm & Sun. noon-5pm. Contact: 843/723-9172 or at (www.courtyardartgallery.com).

Dog & Horse, Fine Art and Portraiture, & Sculpture Garden, 102 Church St. Charleston. **Ongoing** - The gallery represents artists nationally and internationally recognized as leading talent in both equine and canine art. Along with exquisite fine art, the gallery also offers individualized assistance to ensure the most suitable artist for a custom portrait. Hours: Mon.-Fri., 10am-5pm & Sat., 11am-5pm. Contact: 843/577-5500 or at (www.dogandhorsefineart.com).

East Bay Garden Gallery, 114 E. Bay St., in Coates Row, near Rainbow Row, Charleston. **Ongoing** - Artist and owner, W. Hampton Brand provides a unique and more complete "Charleston experience" with his art. His primary subject is the significant architecture and beautiful historic buildings of our city. For those who seek the ultimate Charleston keepsake - he puts his art on the increasingly rare artifacts of historic roofing slate and old handmade Charleston brick. In addition to his art, you're invited to browse among the eclectic garden finds in the courtyard including old gates, statuary, pottery, unique iron pieces and so much more. Hours: Mon.-Sun., 9am-2pm. Contact: 843/958-0490 or 843/327-6282.

Edward Dare Gallery, 31 Broad Street, between Church & State Sts., Charleston. **Ongoing** - Featuring a variety of original works by established artists who have studied with masters of their fields. Painting styles include abstracts, figurative works, landscapes and architectural pieces. In addition to the broad range of paintings, this gallery also offers an exquisite collection of photography, select jewelry, unique works in wood, contemporary porcelain and figurative sculpture. Featuring paintings by Jim Darlington, Beth McLean, Leslie Pratt-Thomas, Ann Lee Merrill, Roberta Remy, Rich Nelson, Anita Louise West, Kathy Sullivan, Michael Patterson, Madeline Dukes, Douglas Grier, Sally Cade, Roberta Remy, Holly Reynolds, and Patricia Madison Lusk. Hours: Mon.-Fri., 11am-5pm, & Sun. by appt. Contact: 843/853-5002 or at (www.edward-dare.com).

Elizabeth Carlton Studio, 85 Wentworth Street, corner of St. Philip and Wentworth St., Charleston. **Ongoing** - Featuring the whimsical, vibrant and playfully designed pottery of Elizabeth Carlton. Hours: Mon.-Sat., 10am-5pm. Contact: 843/853-2421 or at (www.elizabethcarlton.com).



Work by Michael Coleman

Ella Walton Richardson Fine Art Gallery, 58 Broad St., Charleston. **Ongoing** - Featuring oil paintings by Simon Balyon, Roger Dale Brown, Evgeny & Lydia Baranov, Johannes Eerdman, Gerard Ernens, Hennie de Korte, Lynn Gertenbach, Lindsay Goodwin, Frits Goosen, Willem Heytman, Rene Jansen, Stapleton Kearns, Zin Lim, Janny Meijer, Joan Miro, Scott Moore, Craig Nelson, J. Christian Snedeker, George Speck, Aleksander Titovets, Lyuba Titovets, Niek van der Plas, Frans van der Wal, Gert-Jan Veenstra, HyeSeong Yoon. Bronze sculpture by world-renowned Dutch artist Marianne Houtkamp, jewelry by Chicago-based designer Amy Lenzi and photography by Ella Richardson. Hours: Mon.-Sat., 10am-5pm. Contact: 843/722-3660 or at (www.ellarichardson.com).

Ellis-Nicholson Gallery, 1.5 Broad St., Charleston. **Ongoing** - Paintings by Victoria Platt Ellis, Jeannette Cooper Nicholson, Brian Scanlon and Robert M. Sweeney. Also representing sculptors Alex Palkovich and John Douglas Donehue, Jr.; jewelry designers Rebecca Johnston and Carole McDougal; potter Mary Nicholson and glass blower Michael Barnett. Hours: Mon.-Sat. 11am-6pm or by appt. Contact 843/722.5353 or at (www.ellis-nicholsongallery.com).

Eva Carter's Studio, 6 Gillon Street, Charleston. **Ongoing** - Offering the bold abstract expressionist oil paintings of Eva Carter. Hours: by appt. only. Contact 843/478-2522 or at (www.evacartergallery.com).

Fire & Earth: Fine Pottery, 1417 Ashley River Rd., Charleston. **Ongoing** - Featuring original work by gallery owner Kris Neal, and the Charleston area's most comprehensive pottery classes. Hours: Mon.-Sat., 10am-6pm. Contact: 843/766-2776 or at (www.fireandearthpottery.com).

Gallery Chuma, 43 John Street, across from the Visitor's Center, Charleston. **Ongoing** - "African American Works on Paper," featuring master artists Jacob Lawrence and Romare Bearden, as well as renowned artist Jonathan Green. Hours: Mon.-Sat., 10am-6pm.; Sun., 1-6pm. Contact: 843/722-8224 or at (<http://gallerychuma.com/>).

Gaye Sanders Fisher Gallery, 124 Church St., Charleston. **Ongoing** - Featuring original oil and watercolor paintings by Gaye Sanders Fisher. Hours: Mon.-Sat., 10am-5pm; Sun. 1-5pm. Contact: 843/958-0010 or at (www.gayesandersfisher.com).

Gordon Wheeler Gallery, 180 East Bay Street, Charleston. **Ongoing** - Original paintings and limited edition prints of golf, lowcountry landscapes and Charleston scenes by Gordon Wheeler. Hours: Mon.-Sat., 10am-6pm; Sun. 11am-4pm. Contact: 843/722-2546.

Hagan Fine Art Gallery & Studio, 27 1/2 State St., Charleston. **Ongoing** - Featuring works by Karen Hewitt Hagan. Hours: Tue.-Sat., 11am-5pm. Contact: 843/754-0494 or at (www.Hagan-FineArt.com).

Hamlet Fine Art Gallery, 7 Broad St., close to the Old Exchange building, Charleston. **Ongoing** - For the savvy collector, we feature original artwork by exclusive award-winning artists, Kellie Jacobs (pastels); Tim Greaves, Melinda Lewin, and Jennifer Black (Oils); Caroline Street Trickey (watercolors); Stephanie Shuler Hamlet (mixed media abstracts); Bill Campbell and Ken Folliet (flambeaux art pottery) and Mark Woodward and Charles Smith (whimsical and realistic sculptures). Hours: Mon.-Thur., 11am-5 pm; Fri.-Sat., 11am-6pm or by appt. Contact: 843/722-1944 or at (www.Hamletgallery.com).

Helena Fox Fine Art, 106-A Church Street, Charleston. **Ongoing** - Featuring works by West Fraser, Johnson Hagoood, Margaret M. Peery, Julian Davis, and Craig Crawford, along with the stable of artists Helena Fox Fine Art continues to represent including: Sarah Amos, Kenn Backhaus, John Budicin, Terry DeLapp, Donald Demers, Mary Erickson, Joseph McGurl, Billy O'Donnell, Joseph Paquet, and Kent Ullberg. Hours: Mon.-Sat., 11am-5pm or by appt. Contact: 843/723-0073 or at (www.helenafoxfineart.com).

Horton Hayes Fine Art, 30 State St., Charleston. **Ongoing** - Featuring marshscapes and Lowcountry images of shrimpers, crabbers, clambers, and oyster harvesters in oils and acrylics by Mark Horton. Also works by Nancy Hoerter, Shannon Runquist, Bjorn Runquist and Chris Groves. Hours: M.-Sat., 10am-5:30pm & Sun., 12:30-5pm. Contact: 843/958-0014 or at (www.hortonhayes.com).

Imaging Arts Gallery, 175 King Street, between Clifford and Queen, Charleston. **Ongoing** - A unique showcase of photography including LeCroy's vastly enlarged leaves, plants, and flowers - a culmination of photography and technology, as they reveal detail and color that is beyond the reach of the unaided eye. The fine art photography contains a selection of cityscapes, black and whites, international architecture, and others. Unique framed pieces that combine 19th century daguerreotypes, ambrotypes, and tintypes with enlarged images will delight history enthusiasts. LeCroy's photographs are additionally on exhibit at the New York Hall of Science, New York. Hours: Mon.-Sat., 10am-6pm & Sun., 2-5pm. Contact: 843/577-7501 or at (www.imagingarts.com).

Indigo Fine Art Gallery, 102 Church St., Charleston. **Ongoing** - Featuring artwork by Helen K. Beacham, Paula Lonneman and Judith Perry, along with handblown glass seashells, raku pots and the work of special guest artists throughout the year. Stop by and see works-in-progress as well, since the artist/owners are always there & probably painting! Hours: Mon.-Sat., 10am-5pm. Contact: 843-805-9696 or at (www.IndigoFineArtGallery.com).

Julia Santen Gallery, 188 King Street, Charleston. **Ongoing** - Offering original vintage poster art, encompassing the Belle Epoque, Art Nouveau, Art Deco and Contemporary eras. Hours: open mostly, closed sometimes and by appt. Contact: 843/534-0758 or at (www.juliasantengallery.com).

Lambert Gray Gallery & Studios, 54 Broad Street - 2nd Floor, Charleston. **Ongoing** - Featuring the gallery and studio space for Hilarie Lam-

bert and Michael Gray. Visitors are welcome to come watch or browse the gallery. Hours: Wed.-Sat., 11am-4pm or by appt. Contact: 843/822-1707 or at (www.lambertgraygallery.com).

Lime Blue, 62-B Queen Street, in Blink!'s old space, Charleston. **Ongoing** - Featuring works by Susan Avent, Mary Edna Fraser, Matt Overend, Lynn Riding, Mary Walker, and Jeff Kopish. Hours: Wed.-Sat., 10am-5pm. Contact: 843/722-1983 or at (www.shoplimeblue.com).



Work by Marty Biernbaum

Lowcountry Artists Ltd, 148 E. Bay St., Charleston. **May 2 - 31** - "Painting With Fire: Lowcountry Impressions in Clay," featuring works by Marty Biernbaum. A reception will be held on May 4, from 5-8pm. Thirty-two years of experience with glaze and clay technology are brought into play as Biernbaum "paints with fire" on handmade clay vessels. Her lifelong, passionate pursuit to express herself in clay has never diminished. She continuously seeks out new challenges - imaginative ideas that enable her to always create something fresh. **Ongoing** - Featuring works by Denise Athanas, Carolyn Dubuque, Mark Duryee, Lynda English, Carolyn Epperly, Tom Frostig, Lynne N. Hardwick, Rana Jordhal, Bette Mueller-Roemer, and Jackie Wukela. Hours: Mon.-Sat., 11am-5pm & Sun., 1-5. Contact: 843/577-9295 or at (www.lowcountryartists.com).

M Gallery of Fine Art SE, 11 Broad St., Charleston. **Ongoing** - Representing artists whose work reflects the major cultural shift occurring in the art world today, with painters following the mandate of Fred Ross, (Chairman of the Art Renewal Center) to a "dedication to standards of excellence both in training and in artistic execution, and a dedication to teaching and learning with great discipline and devotion, to the methods, developments and breakthroughs of prior generations". Hours: Mon.-Sat., 10am-6pm & Sun., 11am-4pm. Contact: 843/727-4500 or at (www.mgalleryoffineart.com).

Mary Martin Gallery of Fine Art, 103 Broad St., Charleston. **Ongoing** - Featuring original art in a variety of media by: Fletcher Crossman, Jean Claude Gaugy, Richard Pankratz, Barbara McCann, Cary Henrie, Philippe Guillerm, Gilles Payette, Douglass Freed, Kathleen Earthrowl, Randall LaGro, Gwen Fox, Cindy Drozda, David Nittmann, Martin Eichinger, Gregory Beck, Chad Awalt, Alessandro Casson, Barbara Westwood, Michael Sugarman, Jim Pittman, Gloria Coker, Corey Scott Fisher, Bob Ilichter, Norman Cable, Barbara Dave, Mariya Zvonkovich, Arleta Pech, Ed Klink, Art Valero, David Datwyler, Robin Daniels, Don Quade, John Sherman, Densaburo Oku, Cheryl Abbe Lorance, Andi Wolfe, Ron Artman, Jerry Rhodes, Pat Kramer, Jason Antol, William Brian Hibbard, Benoit Averly, Jan Jacque, Michael Downs, and others. Hours: Mon.-Sat., 10am-5pm & Sun. noon-5. Contact: 843/723-0303 or at (www.MaryMartinART.com).

Martin Gallery, 18 Broad Street, ground floor of the Peeople's Building, corner of Broad and State Streets, Charleston. **Ongoing** - Featuring paintings by Mitch Billis, Kathleen Billis, Italian master Imero Gobbato, William Crosby, Christopher Schink, Jennifer Spencer, Jared Clackner, and Gilles Charest; sculpture by Leo Osborne, Claire McArdle, and James R. Pyne; and photography by Michael Kahn. Also, offering select jewelry and glass art by America's best artisans, featuring custom designs by acclaimed master goldsmith Glade Sarbach Davis. Hours: Mon.-Sat., 10am-6pm; Sun., 1-5pm & by appt. Contact: 843/723-7378 or at (www.martingallerycharleston.com).

McCallum - Halsey Gallery and Studios, 20 Fulton St., Charleston. **Ongoing** - Featuring a changing mix of work by two of the southeast's foremost artists, Corrie McCallum and William Halsey. Including paintings, graphics, and sculptures for the discerning collector. Hours: by appt. only. Contact: 843/723-5977 or at (www.halseyfoundation.org).

Nina Liu and Friends, 24 State St., Charleston. **Through June 15** - "Barns and Fields," featuring black and white photographs by Michael Johnson. Hours: Mon.-Sat., 10am-5pm & Sun., noon-5pm. Contact: 843/722-2724.