

# Mint Museum Uptown in Charlotte, NC, Offers Works by Robert Henri

The Mint Museum Uptown in Charlotte, NC, will present the exhibit, *From New York to Corrymore: Robert Henri and Ireland*, on view in the Gorelick Galleries, from May 7 through Aug. 7, 2011.

Organized by The Mint Museum and sponsored by Bank of America, this will be the first exhibition to examine Henri's fascination with the Irish landscape and people, particularly children. The exhibition will travel nationally following its debut at the Mint.

As the leading figure of the group known as the Ashcan School in New York City, Robert Henri (1865-1929) significantly influenced American art in the early 20th century. Born in Ohio, he moved with his family to New York when he was a teenager. He studied in Paris at the Julian Academy, where he embraced Impressionism. Henri continued his studies at the *École des Beaux Arts* and the Pennsylvania Academy of Fine Arts.



*Mary Agnes*, Robert Henri, 1924, Oil on Canvas, Private collection of Tia

In 1908, he organized a landmark exhibition by a group of artists known as "The Eight" to great acclaim. Henri's early works concentrated on landscape, but around 1898 his focus shifted to portraiture as his own unique portrait style began to develop. He first visited Achill Island in Ireland in 1913 and became captivated by the local children, frequently using them as models, while his wife Marjorie helped to entertain and pose them. Although he was enthralled by the Irish culture and residents, he was not able to return to Achill Island until 1924, but then returned each summer until 1928, staying at "Corrymore," the home that he and Marjorie acquired.

"We are pleased to make this important exhibition that focuses on Irish culture available to Mint Museum patrons," said Charles Bowman, North Carolina and Charlotte market president, Bank of America. "Bank of America has a deep commitment in not only supporting the arts but also to strengthen artistic institutions and the communities we serve both locally and around the world."

*From New York to Corrymore* will include more than 40 of Henri's best paintings of the Irish landscape and people, created between 1913 and 1928, and which are drawn from museums and private collections from across the coun-

try. These paintings afford a unique and fascinating window into the genre about which Henri felt most strongly - portraiture - and also serve as a way to chart his various experiments with paint handling and color theories. Among the portraits he painted on his first visit was *Nora* (1913), a young girl who served as one of his most frequent models; The Mint Museum's *My Friend Brien* (1913), which depicts the patriarch of Achill Island, Brien O'Malley; and *Old Johnnie* (Johnnie Cummings) (1913) and *Old Johnnie's Wife* (1913), an elderly couple that the artist befriended. Many of Henri's early Irish portraits are characterized by a pure simplicity and brightness, which may be partially due to his use of primary colors and a less complex palette.

Henri's later portraits focused exclusively on children, responding to their unique and engaging personalities by highlighting their facial expressions and exhibiting little detail in the torsos and backgrounds. This can be seen in portraits such as *Mary Agnes* (1924) and *Tom Cafferty* (1924). By that time, Henri had adopted even more simplified palettes that used only two or three basic colors, transforming the portraits into formal studies in color and composition.

The time that Henri spent in Ireland was extremely valuable to him (it was the only other place besides New York where he purchased a residence), for only there was he able to focus on his painting without the distractions of life in New York. The periods Henri spent in Ireland were among his most prolific, and the paintings that he produced during his Irish sojourns among his most accomplished. Just before his death, Henri composed a tentative list of what he felt to be his most important paintings, and many of the works on this list were his Irish subjects.



*West Coast of Ireland*, Robert Henri, 1913, Oil on Canvas, Everson Museum of Art

*From New York to Corrymore: Robert Henri and Ireland* is made possible with generous support from Bank of America. Additional funding provided by The Mint Museum Auxiliary. Media sponsor: *Charlotte Living Magazine*. The exhibition is accompanied by a fully illustrated 144-page catalogue with essays by Mint Museum curator Jonathan Stuhlman and guest curator Valerie Leeds. The catalogue is funded in part by a grant from the Mary Duke Biddle Foundation.

For further information check our NC Institutional Gallery listings, call the Museum at 704/337-2000 or visit ([www.mintmuseum.org](http://www.mintmuseum.org)).

## Shain Gallery in Charlotte, NC, Offers Works by Terry DeLapp, Dennis Campay & Kim Schuessler

Shain Gallery in Charlotte, NC, is introducing exclusive new art collections at the "Into The Park" Symphony Fundraising Event coming up on May 14, 2011 at Symphony Park. Terry DeLapp, Dennis Campay and Kim Schuessler have generously donated beautiful, original pieces solely for this event. The new collections will be on view in the exhibit, *Love Our Charlotte Symphony!*, at Shain Gallery beginning May 17 - 31, 2011. For more information on the "Into The Park" event please visit ([www.charlottesymphony.org](http://www.charlottesymphony.org)).

Born in Pasadena in 1934, Terry

DeLapp studied at the Chouinards Art Academy in Hollywood and at the University of California. DeLapp currently lives and works in Cambria, CA. He has been exhibiting his paintings since the early 1980s, participating in group shows in California, New Mexico and elsewhere. DeLapp has had numerous solo exhibitions as well, most recently at the Bakersfield Museum of Art (1998). His paintings can be found at the San Diego Museum of Art, and in many private collections, including those of Steve Martin, Martin

*continued above on next column to the right*



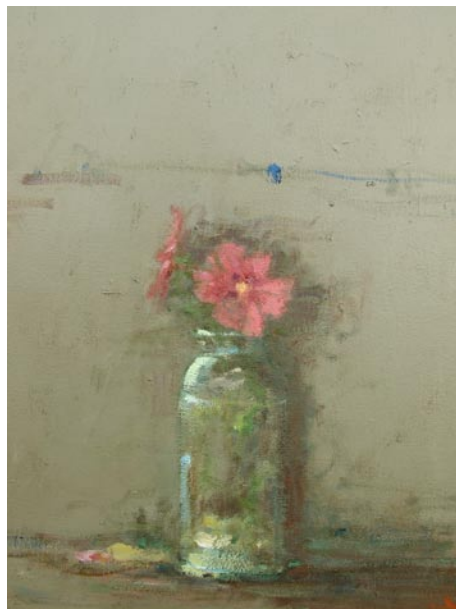
Mull, Joan Rivers, Julian Ganz, and Robert Zemeckis.



Work by Dennis Campay

Dennis Campay's paintings combine cosmopolitan cityscapes with an ethos that is at once rustic and sophisticated, conveying an international urbanity. His kaleidoscopic scenes present a mesmerizing mix of columns, porticos, slatted shutters, and balconies, gently coexisting with marshes, white-washed churches, boats, and bridges. Silvery bodies of water, worn books, the solitary piano, and ubiquitous chairs take their place where interiors and exteriors blend and beckon, evoking memories, illusions and dreams.

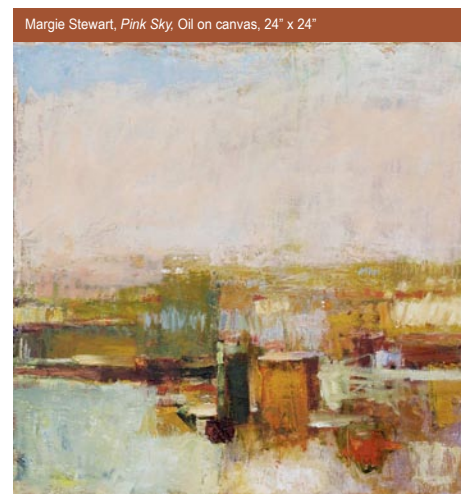
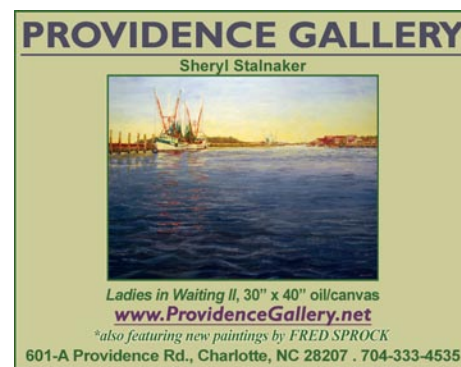
Kim Schuessler's lighthearted images come with a serious art background. Educated at the University of Georgia and Parsons School of Design in New York, Schuessler has honed her fun loving craft. She also spent time studying with Dan Connally in Cortona, Italy and at the University of Bourgogne in Dijon, France. She has over 25 exhibitions to her credit. Schuessler's work is always in high demand. Her collectors span from Hawaii to the East Coast.



Work by Terry DeLapp

Located in beautiful Myers Park, Shain Gallery has been on the forefront of the North Carolina art scene since 1998. The gallery represents many leading national and regional artists, and recently won the "Best of the Best Award" for best Charlotte gallery.

For further information check our NC Commercial Gallery listings, call the gallery at 704/334-7744 or visit ([www.shaingallery.com](http://www.shaingallery.com)).



ON VIEW  
Gallery Artists



Providing expertise to businesses and individuals. Connecting the public with artists in meaningful ways through projects, programming and community partnerships.

401 North Tryon Street  
Charlotte, North Carolina 28202  
704.334.3799  
[www.hodgestaylor.com](http://www.hodgestaylor.com)