

NC Commercial Galleries

continued from Page 70

- Housed in the historic 20th century Sands Building, the gallery features fine and folk art, photography, exquisite handcrafted functional crafts and jewelry, and eclectic recycled and found art by local, regional, and national artists. Hours: Tue.-Sat., 10:30am -5:30pm. Contact: 704/639-0606 or at (www.greenoat-gallery.com).

Pottery 101, 101 S. Main St., from I-85, take exit #76 (Innes St.) toward downtown - we are on the corner of Innes and Main, Salisbury. **Ongoing** - The destination for beautiful handcrafted pottery. Hours: Tue.-Fri., 10am-6pm & Sat., 10am-5pm. Contact: 704/209-1632.

Rail Walk Studios & Gallery, 409 - 413 N Lee St., in the Rail Walk Arts District, Salisbury. **Ongoing** - Featuring works on display by Marietta F. Smith, Sharon Forthofer, Karen Frazer, Kenneth Koskela, Elizabeth H. McAdams, Julie Pontell and Keyth Kahrs. Each of the artists has a unique style and body of work. Visitors will find original art in oil, acrylic, watercolor, pastel, and other mediums, as well as sculpture, hand-made jewelry, pottery, and digital photography, making Rail Walk a great place to purchase a wide variety of original art in all price ranges. Hours: Thur.-Sat., 11am-4pm. Contact: 704/431-8964 or at (www.railwalkgallery.com).

Saluda Area

Heartwood Contemporary Crafts Gallery, 21 East Main Street, Saluda. **Ongoing** - Featuring contemporary works of handmade wearables, jewelry, paper, paintings, fine porcelain, stoneware, glass, metal and wood. Hours: Mon.-Sat., 10am-5pm & Sun., noon-5pm. Contact: 828/749-9365 or at (www.heartwoodsaluda.com).



Work by Jim Carson

Jim Carson's Studio/Gallery, 20-2 Main Street, Saluda. **Ongoing** - Carson is a Signature Member of the American Impressionist Society, a Signature Member of Oil Painters of America, a member of Plein Air Painters of the Southeast (PAPSE), and a member of the historic and venerable Salmagundi Club In New York City. Hours: Fri.&Sat., 11am-5pm, Sun. 1-5pm, also by appt or chance. Contact: 828/749-3702 or at (www.jimcarson.net).

Preserving A Picturesque America Gallery, at Saluda Studios, 144 Highway 176, Saluda. **Ongoing** - Browse the inspiring artwork of our wondrous mountain landscape, all created by local artists who love and want to protect this beautiful place we call home. A portion of all art sales benefits local environmental organizations whose primary focus is protecting and preserving our mountains, rivers, and natural recreation areas. Purchase a piece to beautify your home and help to protect our amazing mountain landscape. Hours: Wed.-Fri., noon-6pm; Sat.&Sun., 11am-5pm. Contact: 828/273-5383 or at (www.preservationthroughart.org).



View inside Wood Berry Gallery

Wood Berry Gallery, 66 E. Main Street, Saluda. **Ongoing** - Wood Berry Gallery is a contemporary art and fine craft gallery located in the heart of historic downtown Saluda. The gallery showcases artists who are unique in their fields. Each artist has their distinctive style and technique. Our craft selection range from blown and cast glass, ceramic sculpture, wood carvings and fine art jewelry. Hours: Tue.- Sat., noon-5:30pm & Sun., noon-4pm. Contact: 828/769-9034 or at (www.woodberrygallery.net).

Seagrove Area

Throughout the Seagrove area, Apr. 19 - 21, 10am-5pm daily - "16th Annual Celebration of Seagrove Potters' Spring Pottery Tour & Kiln Openings". Visit studios, meet potters, and expand your pottery collection. Online shopping will be available with some studios, as well. This special 16th annual event is a self-guided tour of individual pottery galleries, studios, and workshops in the Handmade Pottery Capital of the USA. Participating potters will offer newly handcrafted pottery and ceramic art. Visitors will have the unique opportunity to meet the artists and experience kiln openings and pottery-making first-hand. Some pottery shops will have demonstrations, hands-on activities, food, and music. This year we are giving away three gift certificates, each for \$50. Fill out a card at any participating pottery shop. Qualifying cards will be entered in a drawing, which will take place the weekend of May 25. Maps will be available at participating shops. The map offers a guide to the studios and shops. Pottery maps are also available at (discoverseagrove.com/map-2/). The Spring Guide can be downloaded from our website (www.discoverseagrove.com) and includes a map, shop hours and listing of the participating shops.

A. Teague Pottery/EJ King Pottery, 2132 Hwy. 705, Seagrove. **Ongoing** - Featuring works by several potters from the "village" with their traditional shapes of the Seagrove area. Contemporary, electric fired stoneware. Traditional glazes and melted glass glaze. Hours: Mon.-Sat., 10am-5pm. Contact: 910/464-5400.

A.R. Britt Pottery, 5650 Hwy. 220 S., Seagrove. **Ongoing** - Hand-turned/handmade traditional Seagrove style pottery, original formulated glazes, and functional stoneware in the tradition of Nell Cole Graves style by Aaron R. Britt. Hours: Tue.-Sat., 9am-5pm & Sun., noon-6pm. Contact: 336/873-7736 or at (www.seagrovepottery.net).

Albright Pottery, 6597 New Center Church Rd., Seagrove. **Ongoing** - Featuring traditional, salt glaze and red functional pottery by Arlie G. Albright. Hours: Tue.-Sat., 9am-5pm. Contact: 336/879-4209.

Anita's Pottery & Dogwood Gallery, 2513 Hwy. 705, Seagrove. **Ongoing** - Turning since 1987, Anita Morgan is best known for her miniature pottery, but also has many functional and decorative items. Glazes include cobalt blue, burgundy, hunter green, shiny black, yellow, rose pink, earthy brown, lime green and purple. Hours: Mon.-Sat., 10am-5pm. Contact: 336/879-3040 or at (www.anitaspottery.com).



Work from Avery Pottery

Avery Pottery and Tileworks, 636 Potters Way, Seagrove. **Ongoing** - Finely crafted ceramic forms by Blaine Avery. Extraordinary vessels, unique hand-painted tiles. Hours: Tue.-Sat., 10am-5pm. Contact: 336/873-7923 or at (www.averypotteryandtileworks.com).



Work by Ben Owen III

Ben Owen Pottery, 2199 S. Hwy. 705, Seagrove. **Ongoing** - Wood-fired, traditional and contemporary works using local clay by Ben

Owen III. Colors ranging from Chinese red to Chinese blue. Hours: Tue.-Sat., 10am-5pm (closed in Jan.). Contact: 910/464-2261 or at (www.benowenpottery.com).



Work from Blue Hen Pottery

Blue Hen Pottery, 247 West Main Street, Seagrove. **Ongoing** - Narrative pots for daily use. Wood-salt stoneware and colorful earthenware. Hours: Wed.-Sat., 10am-5pm or by appt. Contact: 336/653-9551 or at (www.bluehenpottery.com).



Works from Blue Stone Pottery

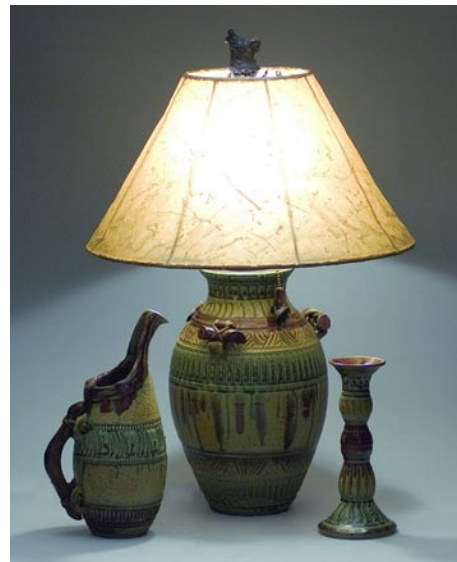
Blue Stone Pottery, 2215 Fork Creek Mill Rd., Seagrove. **Ongoing** - Featuring traditional, functional stoneware pottery. Hours: Tue.-Fri., 10am-4pm & Sat., 9am-5pm. Contact: 336/879-2615 or e-mail at (audreyvalone@bellsouth.net).



Work from Bulldog Pottery

Bulldog Pottery, 3306 Alt. 220, Seagrove. **Ongoing** - Bruce Gholson and Samantha Henne collaborate to make graceful forms, and develop their own unique glazes. Expect distinctively unusual work at Bulldog Pottery. Hours: Tue.-Sat., 10am-5pm and call for Sun. and Mon. Contact: 910/428-9728 or at (www.bulldogpottery.com).

Cagle Road Pottery, 603 Cagle Rd., Seagrove. **Ongoing** - Featuring dinnerware and a wide variety of glazes. Electric, gas and wood-fired salt and ash glazes. Hours: Mon.-Sat., 8am-5pm. Contact: 336/879-2802 or e-mail at (caglerdpottery@yahoo.com).



Works from Caldwell Hohl

Caldwell-Hohl Artworks, 155 Cabin Trail, Seagrove. **Ongoing** - Featuring contemporary stoneware, sculptures, large garden urns

and contemporary fiber art. Hours: Mon.-Sat., 10am-5pm (call first). Contact: 336/879-9090 or at (www.caldwellhohl.com).

Callicutt Pottery, 5137 Seagrove Plank Rd., Seagrove. **Ongoing** - Featuring a good selection of functional stoneware in many colors including brown, black and white, green and burgundy, green and gold, black and burgundy and yellow by Gary Callicutt. Hours: Mon.-Sat., 10am-5pm. Contact: 336/873-7898 or e-mail at (gary51@telco.net).

Carolina Crockery Gallery, 326 Adams Road, (Just off of Hwy 705 between Whynot and Westmoore, or take Steeds Road exit from Hwy 73/74 or Hwy 220 and head towards Seagrove, just down the road from Sid Lucks!) Seagrove. **Ongoing** - The gallery is a multi-media gallery, offering handmade pottery from Morgan Hatfield of Hatfield Pottery, Levi Mahan, and assorted potters from the area. We also carry wood art pieces including cutting boards and custom furniture from Joel Tucker of Southern Wood Creations. We have hand-blown glass from Nicuzzie Glass Designs (Nick Fruin and Suzanne Ririe), jewelry and fiber pieces from The Fuchsia Flamingo. Hours: Tue.-Fri., 2-5pm; Sat., 10am-5pm & Sun., noon to 5pm. Contact: 336/879-2426 or at (www.carolinacrockery.com).



Work by Chad Brown

Chad Brown Pottery, 2719 US 220 N., Seagrove. **Ongoing** - Featuring high fired stoneware, decorative and functional with ash and alkaline glazes, by Chad Brown. Hours: Mon.-Sat., 10am-5pm. Contact: 910/571-1691 or e-mail at (chadcameronbrown@yahoo.com).



Works by Chris Luther

Chris Luther Pottery, 4823 Busbee Rd., Seagrove. **Ongoing** - Featuring contemporary and functional pottery by Chris Luther, a 4th generation potter of Seagrove's Chriscoe pottery family. Hours: Tue.-Sat., 10am-5pm. Contact: 336/301-3254 or at (www.chrislutherpottery.com).

Chrisco Pottery, 1360 Hwy. 705, Seagrove. **Ongoing** - Featuring functional pottery including tableware, vases, and large platters. Hours: Mon.-Sat., 10am-5pm (Sept.-Dec.) & Tue.-Sat., 10am-5pm (Jan.-Aug.). Contact: 336/879-5272.

Cross Creek Pottery, 481 King. Rd., Seagrove. **Ongoing** - Featuring decorative and functional pottery by Terry and Vivian Hunt. Hours: Mon.-Sat., 8am-5pm & Sun., 1-5pm. Contact: 336/873-8425 or at (www.crosscreekpottery.com).



Works from Crystal King Pottery

Crystal King Pottery, 2475 Hwy. 705, Seagrove. **Ongoing** - Featuring functional and decorative stoneware by Seagrove native and family-taught potter Crystal King. Face jugs, salt glazes, and folk art. Hours: Tue.-Sat., 10am-5pm. Contact: 336/879-6990 or at (www.CrystalKingPottery.net).

continued on Page 72