

NC Institutional Galleries

continued from Page 55

and student art shows. Hours: Tue.-Fri., 9am-4:30pm & Sun., 1-4pm. Contact: 919/560-6211.

Power Plant Gallery at ATC, 318 Blackwell St Durham. **Ongoing** - The Power Plant Gallery is an off-site extension of the arts at Duke, promoting visual arts engagement with students, faculty and visitors from Durham and beyond. With 1,500 square feet of exhibition space, the gallery is equipped to exhibit a range of media, from photography and painting to video and installation. Featuring a rotating program of work by Duke students, faculty, and visiting scholars, as well as locally, nationally and internationally recognized artists, the gallery is a new and exciting addition to the growing, vibrant Durham art scene. Hours: Mon.-Fri., 10am-4pm & Sat., noon-5pm. Contact: call 919/660-3695 or e-mail at (mfaeda@duke.edu).

Room 100 Gallery, Golden Belt complex, Building 2, room 100, 807 East Main Street, Durham. **Ongoing** - The gallery is committed to promoting the work of emerging local, regional and national contemporary artists. Exhibitions of varying size and theme will be on view throughout the year with openings coinciding with Third Friday Durham. Hours: Mon.-Sat., 10am-7pm and Sun., noon-6pm. Contact: 919/967-7700 or at (www.goldenbeltarts.com).



Work by Hung Liu

The Nasher Museum of Art, Duke University Central Campus, 2001 Campus Drive, Durham. **Through June 9** - "Maria Magdalena Campos-Pons: Behold". This is a monographic exhibition of a visionary voice in photography, immersive installation, painting and performance. Spanning nearly four decades of visually engaging artworks, the exhibition explores Campos-Pons's prescient and sensorial work—transporting viewers across geographies, mediums and spiritual practices. In her explorations of migration, diaspora and memory, Campos-Pons draws from her family story to examine the global histories of enslavement, indentured labor, motherhood and migration. The first multimedia survey of the artist's work since 2007, "Behold" highlights the artist's dedication to creating new modes of understanding, as well as her engagement with interconnected historical and present-day challenges. These themes are examined through Campos-Pons's performance-based practice and centering of Yoruba-derived Santería symbolism, as well as her work with communities in Boston, Cuba, Italy and Nashville (her current residence). **Through July 7** - "Love & Anarchy". On the surface, love and anarchy may seem like unrelated or even conflicting notions. Love is synonymous with care, compassion, and affection, while anarchy is generally accepted as an absence of authority, a state of disorder, or an ungovernable condition. These concepts, more than tangentially related, are often intertwined and even sometimes mutually dependent. Indeed, moments of disarray and frustration are intrinsic to love, while love sometimes emerges out of disorder and chaos. Drawn from the Nasher Museum's extensive historical and contemporary collections, Love & Anarchy demonstrates some of the ways in which these two concepts have inspired artists, visually and conceptually, over millennia. **Modern & Contemporary Gallery, Through May 19** - "Modern Prophets: Art and Spirituality in America". Prophets and ghosts appear during times of great change. Beginning in the late 19th century, a rapidly modernizing United States prompted artists to visualize and even embody these figures. This imagery came with the growth of secular spirituality and a decline in organized religion among Americans. As a result, spirituality and artistic responses to it helped Americans cope with the effects of modern warfare, the growth of industry, and the advancement of new technologies. Artists have long been considered holders of sacred knowledge in their ability to visualize the world around them, and sometimes, they served as mediums of the unseen. William H. Mumler and his photographs of alleged spirits gained popularity as a grieving population sought to connect

with loved ones lost in the Civil War. In the 20th century, artists such as Georgia O'Keeffe and Alfred Hitchcock were photographed as prophetic or religious figures for their abilities to visualize modernizing American landscapes. **Incubator Gallery, June 16** - "Hung Liu: Living Memory," a student co-curated exhibit. Chinese-born American artist Hung Liu (Born in Changchun, China, 1948 – 2021) portrayed individuals who risked being forgotten in death as in life. As a child, Liu lived under the regime of Mao Zedong, who led the Communist Party during the Cultural Revolution (1966 – 1976), a turbulent period of political and social upheaval in the People's Republic of China. It was during this time that Liu realized photography's significance when she witnessed her mother burn cherished family photographs, or otherwise risk persecution for being "bourgeois," or not working class. As an adult, Liu immigrated to the United States, where she focused on the photographs of the Chinese people who came before her. By manipulating and recontextualizing found images by dripping, splattering, and layering materials, Liu blurred the lines between representation and abstraction and probed photography's role in shaping collective memory. "Hung Liu: Living Memory" explores the artist's ability to bridge past and present by manipulating the threads of visual memory. Her sensitive portraits illuminate what it means to be Chinese, to be American, and to be a woman. These testimonials make visible the faces of the forgotten. Liu's portraits remind us that memory is not merely a repository of the past; it is a dynamic force that inflects the past, informs the present, and shapes our future, forging our sense of self while connecting us to the greater human consciousness. **Trent A. Carmichael Academic Focus Gallery, Through June 16** - "pov: in my nasher teen era". The Nasher Museum presents pov: in my nasher teen era, an installation of photography and collage works chosen and contextualized by the Nasher Teen Council. The works of art, all from the Nasher Museum collection, explore race, economics, culture, gender, age, and more from their point of view. The selection of artworks is both personal and collaborative, as are the accompanying responses written for each chosen work. Together, the texts form an anthology of reflections on contemporary works from the Nasher Museum's collection. The responses to the works of art are directly correlated to the individual and collective experiences of the Nasher Teen Council in Durham, North Carolina. Their identities weave through each response, offering a tapestry of diverse stories to be uncovered. Through the exhibition, they explore their own positions as young creatives from diverse ethnic, racial, and gender backgrounds. The exhibition, pov: in my nasher teen era, amplifies their voices, but also leaves room for those of the artists and the visitors who interact with the exhibition. **Ongoing** - The Collection Galleries feature rotating installations of the Nasher Museum's extensive holdings of historical art. Eight galleries, as well as the entrance to Wilson Pavilion, are dedicated to the museum's strengths, which represent a brief history of human creativity from different times and parts of the world. Just beyond the entrance, visitors will find the Incubator, a flexible space for rotating student- and faculty-curated exhibitions. Visitors are invited to return again and again to The Collection Galleries, where Nasher curators continue to refresh the galleries with gems from the collection. The museum's contemporary collection is showcased through rotating exhibitions within a separate pavilion. Works from the contemporary collection create new conversations and connections among historical works in The Collection Galleries. A breakthrough work by New York artist Fred Wilson from 1990, Colonial Collection, anchors the Arts of Africa Gallery. A painting by Kehinde Wiley is on view in the European Art Gallery. **Ongoing** - Nasher Museum Café and Museum Shop. Admission: Yes, but free to Durham residents, courtesy of "The Herald-Sun" newspaper. Hours: Tue. - Sat., 10am-5pm; Thur. till 9pm; & Sun., noon-5pm. Contact: 919/684-5135 or at (www.nasher.duke.edu).

Edenton

Chowan Arts Council/Your Community Arts Center, 504 S. Broad, Edenton. **Ongoing** - The Gallery features art from North East NC artists as well as some from within a 5 hour driving radius. You will find our beautiful waterfront location a pleasant destination as well as the fine art that hangs within our walls. Stained glass, pottery, photography, fiber arts, and painting in various media. We have metal art by Jonathan Bowling and Woodrow Slade, various forms of art by Christine Henninger, oils by Jane Perry, wood art by several local artist. You will find your visit to Edenton enjoyable and the Gallery

a delight to your artist senses. Hours: Mon.-Fri., 11am-4pm & Sat.-Sun., 10am-2pm. Contact: 252/482-8005 or at (www.chowanarts.com).

Elizabeth City

Arts of the Albemarle, a regional arts partner serving Pasquotank, Camden and Gates Counties of NC, The Center, 516 East Main Street, (corner of Main & Poindexter Streets), Elizabeth City. **Ongoing** - The Jaquelin Jenkins Gallery and The 516 Gallery, are home to over 250 artists, craftsmen, photographers, potters, fiber artists and jewelers. The AofA at "The Center" hosts solo and shared exhibits once a month followed by opening receptions during Downtown Elizabeth City's First Friday ArtWalk each month, as well as workshops with some of our exhibiting and visiting artists. These workshops are open to members and non-members. Admission: Free. Hours: Mon.-Sat., 10am-5pm. Contact: Katie Murray, Executive Director (kmurray@artsaoa.com) or Barbara Putnam, Gallery Manager (bputnam@artsaoa.com). Both can be reached at 252/338-6455 or at (www.artsaoa.com).

Fayetteville



Work by Dwight Smith

Cape Fear Studios, Inc., 148-1 Maxwell Street, Fayetteville. **Main Gallery, T - "** **Ongoing** - New Gallery exhibit every 4th Friday of the month. We are a nonprofit cooperative of 30 local artist (always looking for new members) creating 2D & 3D art. Our Gallery displays exhibits of visiting artist's work as well as our own exhibits with individual studios where member artists create fantastic works of art onsite. The Gallery show is free of charge and the public is welcome to watch the artists at work. Group and individual classes in a variety of media are ongoing. Reg. Hours: Mon.-Fri., 11am-5pm & Sat., 10am-4pm. Contact: 910/433-2986, e-mail to (capefearstudios@capefearstudios.com) or at (www.capefearstudios.com).

Ellington-White Contemporary Gallery, 113 Gillespie Street, Fayetteville. **Ongoing** - A visual arts venue for emerging and professional artists with exhibitions of original art and events that reflect and respond to cultural arts diversity. Hours: Wed.-Sat., 11am-4pm. Contact: 910/483-1388 or at (http://www.ellington-white.com).

The Arts Center, Arts Council of Fayetteville/Cumberland County, 301 Hay Street, Fayetteville. **Main Gallery, Through Apr. 6** - "Cumberland County Schools High School Juried Art Show". **Apr. 12 - May 18** - "Unyielding Sonder: Quiet but Multifaceted Voices by Asian/Pacific Islander Artists in the US," is an exhibition focused on showcasing the diverse artistic interpretations of Asian, Asian American, and Pacific Islander artists in the United States. A reception will be held on Apr. 12, beginning at 6pm. Hours: Mon., 10am-2pm; Tue., 11am-2pm and Wed.-Thur., 10am-2pm. Contact: 910/323-1776 or at (<https://www.theartscouncil.com/>).

The Art Gallery @ FTCC, 2817 Fort Bragg Road, FTCC, General Classroom Building (GCB) 221, Fayetteville Technical Community College, Fayetteville. **Ongoing** - The Art Gallery at FTCC displays exhibitions each semester that feature the artwork of students, faculty, and outside artists. Exhibitions are free and open to the public to enjoy. Hours: call for hours or connection to virtual exhibit. Contact: Dennis Johnson, Dept. Chair, by e-mail at (johnsoden@faytechcc.edu) or call 910/678-0092.

The Museum of the Cape Fear Historical Complex, 801 Arsenal Avenue, Fayetteville. **Through June 2** - "Seventeen Men: Portraits of the Men of the 25th US Colored Troops". Learn how the discovery of a tiny pocket-sized photo album led to a months-long research project for genealogist and artist Shayne Davidson, culminating in a series of 17 life sized portraits. The Seventeen Men were soldiers with the 25th US Colored Troops Co. G from 1864-1865. Each portrait is accompanied by a short biography of the man's life and a reproduced image of the original album

print or tintype Davidson used to create the portrait. **Ongoing** - The museum operates under the Division of State History Museums, Office of Archives and History, within the North Carolina Department of Natural and Cultural Resources. Admission: Free. Hours: Tue.-Sat., 10am-5pm & Sun., 1-5pm. Contact: 910/500-4240 or at (<https://museumofthecapefear.ncdcr.gov/>).

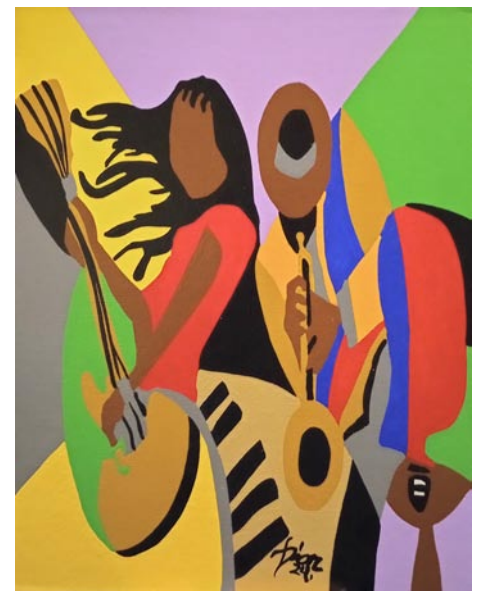
Frisco

Frisco Native American Museum, 53536 North Carolina Hwy 12, Frisco. **Ongoing** - The museum contains a nationally recognized collection of Native American artifacts, exhibits and natural history displays. Galleries filled with native art include information on Native Americans across the United States, as well as artifacts from the first inhabitants of Hatteras Island. Designated as a North Carolina Environmental Education Center and a Historic Albemarle Tour site, the museum also includes several acres of nature trails winding through a lush maritime forest. Admission: Yes. Hours: Tue.-Sun., 10:30-5pm or by appt. (off season: Sat. & Sun. only). Contact: 252/995-4440 or at (nativeamericanmuseum.org).

Fuquay-Varina

Fuquay-Varina Arts Center, 123 E. Vance Street, Fuquay-Varina. **Ongoing** - The Art Center contains a theater, art gallery, classrooms and dance studio. Gallery exhibits generally will change every six to seven weeks. Hours: Mon.-Fri., 9am-5pm & Sat., 10am-5pm. Contact: 919/567-3920 or at (fvarts.org).

Goldsboro



Work by Dion Burroughs

Arts Council of Wayne County, 139 W. Walnut Street, Goldsboro. **Apr. 5 - 26** - "Beyond My Imagination," featuring artworks by Dion Burroughs. A reception will be held on Apr. 5, from 6-8pm. Burroughs is a widely exhibited artist from Martin County, NC. His flat, bold shapes and colors are successful abstractions of movement and spatial perception. **Ongoing** - We represent local and regional artists in our Youth and Main Galleries, Art Market, and off-site Artist Studios. Hours: Tue.-Fri., 10am-6pm & Sat., noon-6pm. Contact: 919/947-0009 or at (artsinwayne.org).

Greensboro Area

Open Air Market, corner of South Elm & MLK in downtown Greensboro. **First Fri. of every month, 4-9pm** - "Indie Market," a place where local artists and crafts people can come together to offer handmade and vintage goods.

African American Atelier & Bennett College for Women Gallery, Greensboro Cultural Center, 200 N. Davie Street, Greensboro. **Ongoing** - Featuring works by local, regional and national African American artists. Hours: Tue.-Sat., 10am-5pm; Wed., till 7pm & Sun., 2-5pm. Contact: 336/333-6885.

Bauman Galleries, 2nd floor, Founders Hall, Guilford College, 5800 W. Friendly Ave., Greensboro. **Apr. 12 - May 17** - "UNCOVER, RECLAIM: Guilford College Senior Thesis Art Exhibition," featuring works by Maren Lamb and Tyl Chaplin. Hours: daily from 9am-9pm. Contact: 336/316-2301.

GreenHill, a space for NC art, 200 North Davie Street, Greensboro Cultural Center, Greensboro. **Through June 29** - "LEAP: Artists Imagine Outer Space". This exhibition features over 20 exceptional artists who create projected light and sound installations, fashion design, animation and comics as well as photography, sculpture, and painting. The dream of connecting with celestial planes has sparked man's imagination since Stonehenge and Chichén Itzá were erected. Jules Verne's vision of space travel today is accessible (for a price) for individuals who travel to the edge of the Kármán line and beyond. Nineteenth century railroad tycoons

continued on Page 57