

NC Institutional Galleries

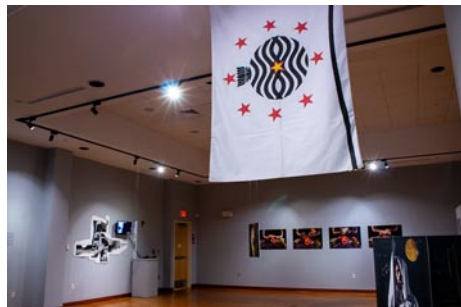
continued from Page 52

large machines have played a crucial role in the country's agricultural, engineering, and industrial heritage. This Focus on the Peck Collection installation features three nineteenth-century images in which windmills are a principal element of each composition. Featuring the locales of Amsterdam, Rotterdam, and Zaandam, each underscores the persistent role of windmills in nineteenth-century Dutch life and how artists employed the structures in their work as both picturesque motifs and as symbols of Dutch ingenuity and innovation. **Through July 21** - "Pantheress," by Georgie Nakima. "Pantheress" is a site-specific installation by Charlotte, NC-based artist Georgie Nakima. Her vibrant and multi-layered painting highlights the complexities of the Black American experience and the indomitable resilience of the Diaspora. Featuring spray paint on cut wood with custom-printed wallpaper, the central focus of this work challenges the conventions of classical portraiture by leaning into the world of the abstract motifs and visual aphorisms that surround her subject. The title of the piece, Pantheress, is a tribute to the instrumental work of the women of the Black Panther movement. The work, featuring timeless geometric and natural forms, can be seen as both a product of this past and a harbinger for a hopeful future.

Permanent Collection Galleries, Through Dec. 31, 2025 - At any one time, there are about 250 works of art from the Ackland's distinguished permanent collection on view. The displays cover many eras and cultures, including most of the Museum's collection areas: the Ancient Mediterranean, Africa, Asia, the Americas, and Europe. Occasional galleries present small selections of prints, drawings, photographs, and other light-sensitive works. You can search our online collection database and filter by works on view. Try saving your own collection of objects using the new "favorites" function! **Museum Store Gallery** (Franklin and Columbia Street), Store hours: Mon.-Sat., 10am-5:30pm & Sun., noon-5pm. Museum Hours: Wed.-Sat., 1-5pm. Contact: 919/966-5736 or at (www.ackland.org).

FRANK, 370 E Main St. Carrboro, Carrboro's East Main Square, next to Hickory Tavern and the Hampton by Hilton hotel, Chapel Hill. **Apr. 2 - May 11** - Featuring works by Carol Retsch Bogart, Shelly Hehenberger, Linda Prager, and guest artists Doug Dotson and Jane Filer. **Ongoing** - Featuring work from over 70 artists, Frank offers more than you'd expect from an art gallery. Frank is a collective, founded by the area's finest artists working together to open the door for creative innovation in the arts. Hours: Tue.-Sat., noon-5pm or by appt. Contact: 919/636-4135 or at (www.frankisart.com).

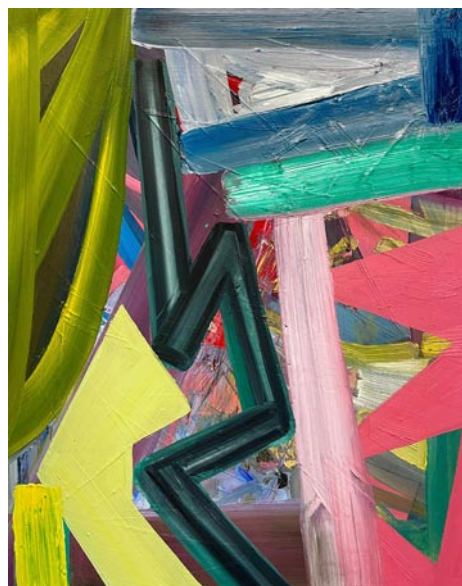
The ArtsCenter, 300-G East Main Street, Carrboro. **Ongoing** - Nurturing the arts in the triangle since 1974 through performance, education and exhibition. Hours: Mon.-Fri., 9am-9pm and Sat. 10am-5pm. Contact: 919/929-2787 or at (<http://artscenterlive.org>).



View of "Initiations" exhibition

The Sonja Haynes Stone Center for Black Culture and History, UNC-Chapel Hill, 150 South Road, Chapel Hill. **Robert and Sallie Brown Gallery, Through May 12** - "Initiations," a dynamic convergence of six artists engaging in various artistic mediums. Immerse yourself in a multilayered reality and imagination. The exhibition showcases the works of six artists who engage with a variety of photographic formats and audiovisual works offering a visual dialogue that initiates the audience to each artist's aesthetic language. The artworks will be installed in a design that suggest a nontraditional choreography for the audience to perform while engaging with the art. The artists in the group exhibit include: Jasmine Clark, Ibrahim Ahmad, Nyugen E. Smith, Andres Hernandez, Adrienne Jacob Oliver, and Leticia Clementina. **Ongoing** - Dedicated in 2004, the Sonja Haynes Stone Center houses classrooms, a library, an art gallery and museum, an auditorium, and a dance studio. More than ninety-five percent of the Center's cost was met through private gifts, contributed by more than fifteen-hundred donors. Hours: Mon.-Fri., 8am-5pm. Contact: 919/962-9001, e-mail to (stonecenter@unc.edu) or visit (<http://sonjahaynesstonectr.unc.edu/>).

ALTERNATE ART SPACES - Chapel Hill Carrboro Town Hall, 301 W. Man Street, Carrboro. **Through Apr. 7** - "Portraits of Resilience". A reception will be held on Apr. 6, from 1-3pm. The exhibition celebrates 19 women from diverse backgrounds and experiences. It explores responsive inner strength and perseverance, fragility, and vulnerability when confronted with emotional, physical, or cultural challenges that influenced and changed their lives. Hours: Mon.-Fri., 9am-5pm. Contact: call Barbara Tyroler at 919/360-8791 or e-mail to (bttyroler@mac.com).



Work by Ashlynn Browning

Horace Williams House, 610 E. Rosemary Street, Chapel Hill. **Through Apr. 28** - "Forces at Play," featuring works by Ashlynn Browning. **Ongoing** - The Horace William House is the only historic house open to the public in Chapel Hill. The house retains its original architecture including woodwork, floors, ceilings, and mantles. They have a collection of antique furniture, including a set of four chairs and a newly acquired settee that once belonged to Horace Williams. They offer self-guided tours of the house, including an exhibit about the history of those who lived there. They also have a number of self-guided walking tours of the surrounding community, which you can pick up free of charge at the Horace Williams House. Explore the historic district along East Franklin Street, wander the Old Chapel Hill Cemetery, and more. Hours: Thur. & Fri., noon-4pm and Sun., 2-5pm. Contact: 919/245-4320 or e-mail to (info@visitchapellhill.org).

Charlotte Area

South End Art Gallery Crawl - From 5-8pm on the 1st Friday of each month.

Bechtler Museum of Modern Art, Levine Center for the Arts, 420 South Tryon St., Charlotte. **Through June 2** - "Hildur Ásgeirsdóttir Jónsson: Infinite Space, Sublime Horizons". Born and raised in Iceland, Hildur Ásgeirsdóttir Jónsson (b. 1963) has spent the last 30 years developing a unique practice that melds the disciplines of painting, weaving, and drawing, creating an innovative and labor-intensive body of work that blurs the boundaries between abstraction and representation, and fine art and craft. Based on the captivating landscape and skies of Iceland, her work is deeply rooted in environmental subjects and concerns while also contributing to art historical discourses on landscape painting and postwar abstraction. Organized by the Frederick R. Weisman Museum of Art at Pepperdine University, this exhibition will feature large-scale paintings created on a loom and more intimate watercolors and drawings. **Through June 2** - "On the Horizon: Landscapes from the Collection". This exhibition features work by nearly twenty artists from the museum's collection that explore diverse approaches to depicting landscapes. Artists like Isabel Quintanilla, Markus Raetz, and Italo Valenti portray idyllic scenes; in contrast, Paul Harcharik explores the grim impact of industrialization. Other artists including Nicolas de Staël, Maria Helena Vieira da Silva, and Zao Wou-Ki push the boundaries of traditional landscapes with wholly abstract compositions. With works spanning over fifty years, "On the Horizon: Landscapes from the Collection" delves into artists' varied engagements with the natural world and evolving environments. **Through Aug. 9** - "Eduardo Chillida: 100 Years". This exhibition commemorates the centenary of the influential Spanish sculptor Eduardo Chillida (1924-2002). Presenting a selection of sculptures and works on paper from the Bechtler Museum's permanent collection, this intimate exhibition offers a focused look at the artist's pioneering and varied practice. Renowned for his monumental sculptures, Chillida also created domestically-scaled sculptures, drawings, collages, and prints, examples of which will

be on view. Together these works illustrate the great influence that Chillida's upbringing in the Basque region of Spain and his early training in architecture had on his unique artistic vision, and demonstrate his enduring exploration of space, light, form, and material. **Through Aug. 9** - "Alyson Shotz: Coalescence". Blurring the boundaries between art and science, American artist Alyson Shotz (born 1964) is widely acclaimed for her sculptures and installations that use synthetic materials such as glass, mirrors, plastic, and stainless steel to harness intangible forces of the natural world like gravity, space, and light. On loan from the Bank of America Collection, this single-work installation is a dazzling sculpture made of glass beads and wire that hangs from the ceiling, "Coalescence" (2006) resembles a hovering cloud, a massive spider web glistening with morning dew, or a cluster of atoms magnified to monumental scale. Its open form challenges traditional notions of sculpture as grounded, solid, or weighty, and reveals Shotz's abiding interest in perception: calling attention to the relationship between an artwork, the viewer, and the space they share. **Ongoing** - The Bechtler Museum of Modern Art is named after the family of Andreas Bechtler, a Charlotte resident and native of Switzerland who assembled and inherited a collection of more than 1,400 artworks created by major figures of 20th-century modernism and donated it to the public trust. The Bechtler collection comprises artworks by seminal figures such as Alberto Giacometti, Joan Miro, Jean Tinguely, Max Ernst, Andy Warhol, Alexander Calder, Le Corbusier, Sol LeWitt, Edgar Degas, Nicolas de Stael, Barbara Hepworth and Picasso. Only a handful of the artworks in the Bechtler collection have been on public view in the United States. Admission: Yes. Hours: Mon., Wed.-Sat., 10am-5pm; Sun. noon-5pm; and open until 9pm the 1st. and 3rd. Fri. of each month. Contact: 704/353-9200 or at (www.bechtler.org).

Bill and Patty Gorelick Gallery, at Central Piedmont Community College's Cato Campus, Cato III, 8120 Grier Road, Charlotte. **Through May 7** - "Archival Photos Reimagined," featuring works by Central Piedmont Students and Staff. In a joint effort between the Central Piedmont Archives and Art Galleries, students and staff came together to recreate photographs from the Central Piedmont Archives. Using the photographs as inspiration, each participant artistically reimagined a selected photograph using any media of their choice. The Gorelick Galleries will exhibit this collection of works on Cato, Levine and Central Campuses as part of a traveling exhibition series. With an emphasis on College history and student engagement the exhibition celebrates the some of the best moments in the College's history and in turn shines the spotlight back on students. Hours: open while campus is open, but reservations help us alert our security team to visitors, provide directions to the galleries, and COVID-19 security protocol instructions to the visitors. Contact: 704/330-6869 or e-mail to (foundation@cpcc.edu) to schedule an appointment. For directions to Central Piedmont's campuses, visit (cpcc.edu/locations).



Work by Tina Alberni

Bill and Patty Gorelick Gallery, at Central Piedmont Community College's Central Campus, North Classroom, 1320 Sam Ryburn Walk, Charlotte. **Through May 7** - "Fragments," featuring works by Tina Alberni. Alberni derives this series of work from impact of climate change and the harm created by aspects of technological development and progress. With a deep belief that all living things possess and intrinsic value and not simply human beings, Alberni challenges the viewer to consider topics such as how natural disasters, war and social disparity contribute to the endangerment and physical displacement of all living things. Alberni uses her new exhibition "Fragments" to illustrate the narrative of fragmented lives and irreversible damage both visually and physically. In contrast to the hopeless narrative of

destruction, Alberni seeks to use her artwork to create a positive, hopeful spirit for the future. Alberni assembles objects and layers in her work in a brightly colored, harmonious fashion, which invites the viewer in for a deeper contemplation of each composition. Alberni's work will be on display at Central Piedmont for 2024 and will be part of the Gorelick Gallery's traveling artwork series. Hours: open while campus is open, but reservations help us alert our security team to visitors, provide directions to the galleries, and COVID-19 security protocol instructions to the visitors. Contact: 704/330-6869 or e-mail to (foundation@cpcc.edu) to schedule an appointment. For directions to Central Piedmont's campuses, visit (cpcc.edu/locations).

Bill and Patty Gorelick Gallery, at Central Piedmont Community College's Harper Campus, Harper IV, 315 W. Hebron St., Charlotte. **Through Dec. 31** - "A Journey Through Life", featuring works by Jodi Lynn McNeely. This series has been several years in the making. As you inspect each piece of work, look for the 'path'. It represents our journey. We all are on our own journey, have our own story. As I talk to folks about their stories, I'm amazed at how similar our experiences can be. Our life events, whether the same or different can cultivate preparedness in each of us in much the same way. Note that each individual person carved into my works of art is either touching the path or connected to someone who is. If they are extremely close, they share a hand or foot. Staying connected to someone is critical in this thing called life. As I travel through life, I am constantly reminded at how important being connected is. This is especially relevant during the rough times. Establishing strong relationships for me has been an essential part of my journey. I often carve the likeness of folks I know or have met on my journey into my work. Do you see yourself? I am constantly reminded of how important the people around me are. My life has been full of heart break, pure joy and everything in between. Sound familiar? I am determined to learn from the heart break, remember the pure joy and live everything in between to the fullest. Hours: open while campus is open, but reservations help us alert our security team to visitors, provide directions to the galleries, and COVID-19 security protocol instructions to the visitors. Contact: 704/330-6869 or e-mail to (foundation@cpcc.edu) to schedule an appointment. For directions to Central Piedmont's campuses, visit (cpcc.edu/locations).

Bill and Patty Gorelick Gallery, at Central Piedmont Community College's Harris Campus, Harris II, 3210 CPCC Harris Campus Drive, Charlotte. **Through Dec. 31** - "A Celebration of Art," featuring works by: Mario Loprete, Sheridan Hathaway and Andres Palacios. The Bill and Patty Gorelick Galleries will open a new exhibition at Harris Conference Center featuring the best of the College's permanent art collection alongside featured artists Mario Loprete, Sheridan Hathaway and Andres Palacios. Works from the College's collection exhibit a variety of works from former Central Piedmont students with a special highlight on Loprete, a mixed media artist, and ceramic artists Hathaway and Palacios. "A Celebration of Art" is certain to deliver a diverse selection of 2D and 3D artwork for the 2024 year. Hours: open while campus is open, but reservations help us alert our security team to visitors, provide directions to the galleries, and COVID-19 security protocol instructions to the visitors. Contact: 704/330-6869 or e-mail to (foundation@cpcc.edu) to schedule an appointment. For directions to Central Piedmont's campuses, visit (cpcc.edu/locations).



Work by Marge Loudon Moody

Bill and Patty Gorelick Gallery, at Central Piedmont Community College's Levine Campus, Levine II, 2800 Campus Ridge Road, Matthews. **Through May** - "Intangible Words," featuring works by Marge Loudon Moody. Moody is a Professor Emerita of Winthrop University in Rock Hill, SC where she taught for over 30 years. Widely exhibited both nationally and internationally Moody's work exists in private and public collections worldwide. "Intangible Words" broadly investigates

continued on Page 54