

SC Institutional Galleries

continued from Page 39

medias such as drawing, painting, ceramics but also specialized medias such as fiber, metals, and animation. "AUHSAE" is a true survey of the quality and variety of visual arts in Upstate high school programs. Hours: Mon.-Thur., 9am-7pm & Fri., 9am-2pm. Contact: Laraine Wells, Administrative Assistant at 864/848-2023 or e-mail at (laraine.wells@gvltec.edu).

ALTERNATE ART SPACES - Greenville Centre Stage Theatre Gallery, 501 River Street, Greenville. **Through Apr. 26** - "Western Light: Earth - Sky - Water," featuring landscapes of the American West by Steve Courchaine. Artist Steve Courchaine has traveled throughout the American West, collecting reference material with photography and practicing plein air painting. Inspired by the vast western landscape, he observed the clarity of sunlight in the west increases the color saturation found in nature there versus what you might see in the east. This exhibit represents those experiences. **Ongoing** - Featuring works by visual art members of MAC. Exhibits are offered in collaboration with the Metropolitan Arts Council. Hours: Tue.-Thur., 2-5pm & 2 hr. prior to shows. Contact: MAC at 864/467-3132, at (www.greenvillearts.com/mac-featured-galleries/).

Greenwood

Arts Center of Greenwood, at the Federal Building, 120 Main Street, Greenwood. **Ongoing** - Featuring works by local and regional artists. Hours: Mon.-Fri., 10am-5pm & Sat., 10am-3pm. Contact: 864/388-7800 or at (www.emeraldtriangle.us/arts-center/).

Lander University Fine Art Gallery, Cultural Center Building, 320 Stanley Ave., Greenwood. **Ongoing** - The Lander University Fine Art Gallery features a variety of exhibits throughout the year. The gallery features national and regional artist, as well as student and faculty work showcasing painting, sculpture, ceramics, graphic design, and photography. Hours: Mon.-Fri., 10am-4pm. Contact: call Jon Holloway at 864/388-8810 or at (<https://www.facebook.com/pages/category/Art-Gallery/Lander-University-Fine-Art-Gallery-166498067092236/>).

Greer

Edward R. Driggers City of Greer Center for the Arts, 804 Trade St., Greer. **Ongoing** - Featuring artists studios. Hours: Tue., noon-8pm; Fri., 9am-3pm; & Sat., 10am-2pm. Contact: call Sara Odem at 864/5383 or at (<http://greerculturalarts.com/>).

Hartsville

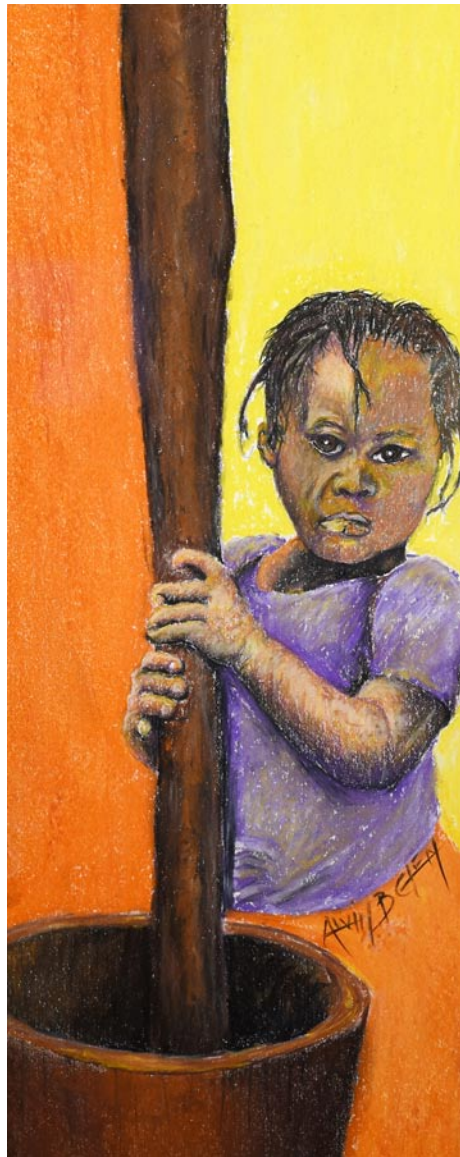
Black Creek Arts Center, 116 West College Ave., Hartsville. **Jean & James Fort Gallery, Apr. 1 - May 24** - "The Extraordinaire of Narzhio Wayne (Narzhio) Stucky. A reception will be held on Apr. 4, from 5:30-7pm. This exhibit will glimpse how the artist creates Abstract and Pop Art from the soul. **Ongoing** - Featuring works by local and regional artists. Hours: Tue.-Thur., 10am-1pm and 2-5pm; Fri., 10am-2pm and 1st Sat. of the month 10am-1pm. Contact: 843/332-6234 or at (www.blackcreekarts.org).

Hartsville Museum and Sculpture Courtyard, 222 North Fifth Street, corner of Fifth Street and Home Avenue, Hartsville. **Ongoing** - Housed in a 1930's Post Office Building, the museum has kept many of the unique architectural features of the building. The skylight, original to the building, has been retrofitted with stained glass panels depicting the flora and fauna significant to the area. The Sculpture Courtyard added in 2000 features many different types of sculpture. The Showcase Gallery presents special exhibits focusing on history, the arts or present day events. Hours: Mon.-Fri., 10am-5pm (closed from noon-1pm on Fri.). Contact: 843/383-3005 or at (www.hartsvilmuseum.org).

The Patz Fowle Visual Arts Studio, SC Governor's School for Science + Mathematics, 401 Railroad Avenue, Hartsville. **Ongoing** - A public, boarding high school for students in grades 11 and 12. The school concentrates on science and mathematics, but offers the full spectrum of the humanities as well. For info visit (www.scgssm.org).

Hilton Head Island Area

Art League of Hilton Head Gallery, at the Arts Center of Coastal Carolina, 14 Shelter Cove Lane, Hilton Head Island. **Through Apr. 5** - "Gestures in Nature: The Allure of the Landscape, an exhibit of paintings by Ellen DiFazio. DiFazio offers a view of nature through a semi-abstract lens, often featuring a muted color palette along with texture built upon and



Work by Alvin B. Glen

scratched into the canvas. She utilizes a range of media while focusing on capturing nature's spirit rather than its form. A native of Long Island, DiFazio is inspired by her surroundings, whether the landscapes of Long Island, New York or the beaches and marshes of Hilton Head Island. **Apr. 9 - May 10** - "Pastel Artworks Depicting the Hard Labor of Slaves and Cultural Influences," featuring works by Alvin B. Glen. A reception will be held on Apr. 10, from 5-7pm. The Art League of Hilton Head will host Rice, Ghana, Charleston, the World, an exhibit of soft pastels by Lowcountry artist Alvin B. Glen. The collection, depictions of men, women, and children farming and processing rice, highlights the hard labor of slaves that made Charleston one of the richest cities in the world. "Their cultivation of Carolina Gold rice forever changed the Lowcountry and added significant cultural influences felt nationwide," says Glen. **Ongoing** - Featuring works by members of the Art League of Hilton Head. Hours: Mon.-Sat., 10am-4pm. Contact: 843/681-5060 or at (www.artleaguehi.org).



Work by John Davis

Coastal Discovery Museum at Honey Horn, off Highway 278, across from Gumtree Road, Hilton Head Island. **Museum Grounds, Apr. 27 & 28** - 23rd Annual Art Market, a juried fine art and craft show, which takes place the grounds of Honey Horn, a unique Lowcountry setting known for its live oaks, winding trails and camellia garden. Over 90 artists from across the region will be displaying and selling a wide range of hand-crafted works, including ceramics, fiber, glass, jewelry, metal, painting, drawing, photography and sculpture. Show hours

are 10am to 5pm, on Saturday; and 10am to 4pm, on Sunday. Admission is \$5 and free to children 12 and under. Tickets are available to purchase onsite and online here at (<https://fareharbor.com/embeds/book/coastaldiscovery-museum/items/288208/availability/1394789200/book/?full-items=yes&flow=631763>) for Saturday and here at (<https://fareharbor.com/embeds/book/coastaldiscovery-museum/items/288208/availability/1394789574/book/?full-items=yes&flow=631763>) for Sunday. There's plenty of free, convenient parking, too. For info call 843/689-6767 or visit (www.coastaldiscovery.org).

Coastal Discovery Museum, at Honey Horn, off Highway 278, across from Gumtree Road, Hilton Head Island. **Main Gallery, Through Mar. 12** - "Stance in Circumstance," an exhibition of works by Gullah artist Alvin Glen. The Coastal Discovery Museum, in conjunction with the Native Island Business and Community Affairs Association (NIBCAA), is pleased to present works by Alvin Glen. "Our new exhibition reflects our deepening partnership with NIBCAA and our efforts to expand the reach of the Gullah Celebration Festival," said Elizabeth Greenberg, director of exhibitions at the Coastal Discovery Museum. "I am delighted to have Alvin Glen as our featured artist this year," said Angela Dore, curator at NIBCAA, which has hosted the Gullah Celebration since 1996. "Alvin's unique style and storytelling capability fosters a deep, engaging connection with the viewer and his documentation of history offers a vivid, emotional record of social narratives and societal shifts." **Ongoing** - Featuring a butterfly sculpture by South Carolina artist Eric Moore; work by sculptor John Van Alstine; and murals by Italian artist Hitnes. Admission: FREE. Hours: Mon.-Sat., 9am-4:30pm & Sun., 11am-3pm. Contact: 843/689-6767 or at (www.coastaldiscovery.org).

Lake City

Crossroads Gallery, 124 West Main Street, Lake City. **Ongoing** - Featuring past winning entries from ArtFields competitions on a rotating basis. Hours: Tue.-Sat., 11am-5pm. Contact: (www.artfieldssc.org).

Lancaster

USC Lancaster Native American Studies Center, 119 South Main Street, Lancaster. **Five Points Gallery, Through Aug. 5** - "More than a Game: Indigenous Sports and Athleticism." This exhibit is on display in conjunction with the 18th Annual Native American Studies Week, "Indigenous Athletes and Athleticism: Vital Contributions to a National Passion." The athletics-focused exhibit highlights information about Indigenous athletes- some with Carolina connections, such as Buck George, who played football for the Clemson Tigers and the team now known as the Washington Commanders- and their contributions to the Olympics and competitive sports such as basketball, hockey, football, wrestling, track and field, and more. "This exhibit takes a look at a subject we've never covered before," said Center Special Projects Coordinator Elisabeth Avelar. **North Gallery, Through Sept. 1** - "Backyard Vines: Artwork by Nancy Basket". View the beautiful weavings and sculptures made of wisteria, kudzu, long leaf pine needles, and more from traditional artist Nancy Basket. **Red Rose Gallery, Apr. 5 - June 20** - "Painted Voices". Discover the two-dimensional array of landscapes, abstracts, and portrait-style artwork from Catawba Nation artists DeAnn Beck and Nicole Foxx Braswell. **Duke Energy Gallery, Through Aug. 5** - "Native American Archaeology in the Wateree Valley". Artwork and artifacts tell the story of Indigenous mounds in the Wateree Valley region. **D.**

Lindsay Pettus Gallery, Ongoing - "The Story of Catawba Pottery". This National Endowment for the Arts funded exhibit traces the art, culture and history of Catawba pottery, the oldest Native American pottery tradition in the United States. **Back Gallery, Semi-permanent Exhibit** - "This is Us: Native American Studies". This exhibit celebrates the history and 10th Anniversary of USCL's Native American Studies, including artifacts and artwork from Collections, and a history of the building our Native American Studies Center calls home. **Ongoing** - The Center is 15,000 square foot facility in historic downtown Lancaster. Guests will have the opportunity to tour the NAS Center's gallery spaces, archives, classrooms, and archaeology, language, and audio-visual labs. Home to the world's largest collection of Catawba Indian pottery, the NAS Center will offer exhibits of regional Native American Art, classes and programs focused on Native American history, culture, archaeology, folklore, and language. Hours: Tue., Wed., Fri., & Sat., 10am-5pm; Thur., 10am-7pm; by appt. Closed Mon.&Sun. To make an appointment for visitation, call the Native American Studies Center at 803/313-7172 or e-mail to (usclnasp@mailbox.sc.edu). Contact: 803/313-7172 or visit (<http://usclancaster.sc.edu/NAS/>).

Marion

Marion County Museum, 101 Wilcox Avenue, Marion. **Ongoing** - Changing exhibits are displayed in two galleries downstairs. These can be local exhibits, or traveling exhibits from the South Carolina State Museum's collections. The Magnolia Room of the museum is furnished with lovely antiques once used in the Aiken-Rhett House in Charleston. These pieces were a gift from the Charleston Museum. The upstairs galleries feature a turn-of-the-century classroom, a farm room, and a variety of displays concerning the people and places of Marion County. Hours: Tues.-Fri., 9am-noon & 1-5pm. Contact: 843/423-8299 or at (<http://www.marionsc.org/museum>).

McClellanville

McClellanville Arts Council Gallery, McClellanville Arts Center, 733 Pinckney Street, McClellanville. **Ongoing** - Featuring a selection of artworks by area artists. Hours: Thur.-Sat., 11am-3pm or by appt. Contact: 843/887-3157 or at (www.mcclellanvilleartscouncil.com).

McCormick

The MACK, McCormick Arts Council Gallery, 115 Main Street, located in the historic Keturah Hotel, McCormick. **Ongoing, The Artisans Gallery Shop at the MACK** - Featuring works of over 30 artisans including paintings, pottery, jewelry, jacks, gourds, woodworking, textiles, soaps and more. Hours: Mon.-Sat., 10am-4pm. Contact: 864/852-3216 or at (<http://mccormickarts.org/>).

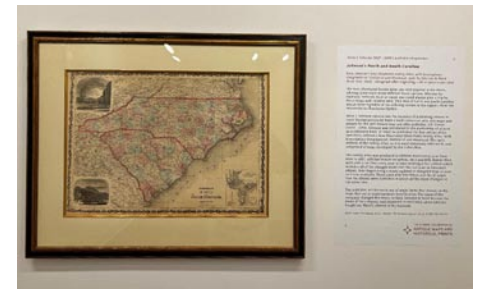
Moncks Corner

Berkeley County Museum and Heritage Center, 950 Stony Landing Road, Moncks Corner. **Ongoing** - Located within the Old Santee Canal Park, the Berkeley County Museum tells the 12,000-year-old story of the region. Exhibits and artifacts focus on the American Revolution, Native Americans, early medicine, rural electrification, and the Francis Marion National Forest. Gifts, book, prints, jewelry, and other items available in the gift shop. Admission: the museum is free, but there is a parking fee for the park. Hours: Mon.-Wed., 9am-4pm; Fri & Sat., 9am-4pm; and Sun., 1-4pm. Contact: 843/899-5101 or e-mail at (info@berkeleymuseum.org).

Mount Pleasant

Sweetgrass Cultural Arts Pavilion, Mount Pleasant Memorial Waterfront Park, 99 Harry M. Hallman, Jr. Blvd., under the bridge, Mount Pleasant. **Ongoing** - The pavilion is a tribute to the generations of men and women who have carried on this African tradition for more than three centuries. Kiosks and panels tell the history of this unique craft, and the open-air facility provides a venue for local basketmakers to display and sell their wares. Hours: daily, 9am-5pm. Contact: 800/774-0006 or at (www.townofmountpleasant.com).

Myrtle Beach / Grand Strand



Map of North and South Carolina from the exhibit, "The Mapmakers' Art: The Bishop Collection of Antique Maps and Historical Prints: 1606-1863".

Franklin G. Burroughs • Simeon B. Chapin Art Museum, 3100 South Ocean Blvd., beside Springmaid Beach, Myrtle Beach. **Through Apr. 14** - The NAWA Sisterhood / Connection and Inspiration Through Our Membership. The National Association of Women Artists (NAWA) was established in 1889 and has served as an organization to promote, educate and support women in the arts. The NAWA Sisterhood features the current work of NAWA's South Carolina chapter members in honor of their NAWA contemporaries and predecessors – like Mary Cassatt, Suzanne Valadon, Judy Chicago and Anna Hyatt Huntington – thereby recognizing the invaluable and abundant support that NAWA has provided and continues to provide for women in the arts for the past 135 years. Works will range in media and style and will include sculpture, painting, photography, fiber art, collage, drawing and installation art. **Through Apr. 21** - "The Mapmakers' Art: The Bishop Collection of Antique Maps and Historical Prints: 1606-1863". Donated by the George Bishop Family. This is an exhibition of 30 works dated from 1606-1863. Following the discovery of the New World in the fifteenth century, European countries sought to document and map new territories using cartographic methods and technologies developed since the thirteenth century. Many of the early European cartographers were

continued on Page 41