

Earth Day

May 10th
starting at 1pm

Holly Ridge Community
Center 404 Sound Road

Instructor: George Cole

Homeschool students participate Free of
charge to create 18x24 Earth Day artwork

Supplies are provided

Register here
<https://forms.gle/8AJrRy5jcA2P5Z3F8>

North Carolina Arts Council
www.ncarts.org

NATIONAL ENDOWMENT for the ARTS
arts.gov

Coastal Carolina Artists & Crafters Guild

Cameron Art Museum

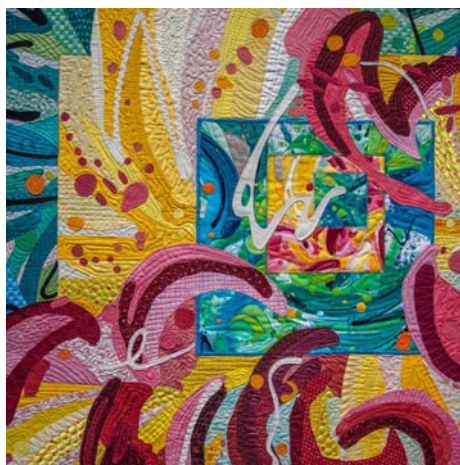
continued from Page 27

of creation. Embellishing and departing from Genesis, Milton depicts Eden not as an ideal garden, but as the unkempt site of the original human act of defiance - the eating of the apple - which launched the earliest human family into a life at odds with God.

Form follows function in this work as Sayre deploys fire, water, smoke, and chemistry to create the most disturbing images. Visitors are invited to draw close and engage with the works' large scale and to experience the messiness of making, and by analogy, to bear witness to the ways that life invades, entangles, and tarnishes us.

Thomas Sayre (b. 1950) grew up in the shadow of Washington National Cathedral. His early art education and his love and respect for natural materials came from the stonecutters at the cathedral. His education continued at St. Albans School, as a Morehead Scholar at the University of North Carolina, at the University of Michigan, and the Cranbrook Academy of Art. In 1981 Sayre founded, along with Steve Schuster, the multi-disciplinary design firm, Clearscapes.

Sayre designs and builds public art projects and private commissions around the world. His current work includes large paintings and sculptural commissions made with tar, smoke, gunshots, welding material, earth, and fire. His art is housed in collections from Thailand to Tennessee. He has exhibited in many private galleries and public museums, including Cheryl Hazan Gallery in Manhattan, the Tampa Museum of Art, the Mississippi Museum of Art and the North Carolina Museum of Art. In 1995, Sayre received a National Endowment for the Arts Fellowship. In 2012, he received the North Carolina Award, the highest honor granted to civilians by the state. In 2014 he received an honorary Doctor of Fine Arts from North



Katie Pasquini Masopust (American, b. 1955) "Bouquet", 2011 (detail) Cottons, Blends, Ultrasuede, Wool Batting, Machine Applique, Machine Quilted. On loan from artist, Carolina State University.

Cameron Art Museum provides a cultural gathering place that enriches the lives of museum visitors and the community through high-quality exhibitions, lifelong learning in the arts, dynamic public programs, and stewardship and interpretation of the collection. CAM's four core values: commitment to community, to lifelong learning in the arts, to support of artists, and to collecting, preserving, documenting and interpreting a permanent collection of art. The museum has been a collecting institution since inception, with approximately 4,000 objects in the permanent collection, with a primary and growing focus on modern art. The collection includes work by artists of national and international significance, used in changing thematic exhibitions, loan exhibitions, and for educational purposes. Cameron Art Museum is a non-profit fully reliant on the generosity of its donors.

For further information check our NC Institutional Gallery listings, call the Museum at 910/395-5999 or visit (www.cameronartmuseum.org).

Historic Thalian Hall Center for the Performing Arts in Wilmington, NC, Offers World Premiere of Dorothy Gillespie Documentary - Apr. 19 & 21

The World Premiere of *Dorothy Gillespie: Courage, Independence, and Color*, a 90-minute documentary will take place on The Tony Rivenbark Main Stage, of the Historic Thalian Hall Center for the Performing Arts, Wilmington, NC, on Apr. 19 and 21, 2024. The film celebrates the legacy of renowned artist and activist Dorothy Gillespie (1920-2012). Today, Wilmington presents the most art in public spaces by Dorothy Gillespie in the US and a plethora of art in many public and private collections in the local community, region, and state.



Portrait by Dorothy Gillespie, which was on view in an exhibit at UNC-Wilmington's CAB Art Gallery in 2023.

Tickets are on sale now at the Box Office of Historic Thalian Hall for the World Premiere and Q&A on Friday, Apr. 19, at 7pm and the matinee screening and Q&A on Sunday, Apr. 21, at 2:30pm.



"Beanstalk Colorfall" by Dorothy Gillespie, on view inside Thalian Hall in Wilmington

VIP Tickets are also available for a Champagne reception on Friday, Apr. 19, from 5:30-7pm in the Ballroom at Historic Thalian Hall Center for the Performing Arts prior to the World Premiere. The VIP tickets include the reception plus the screening of the film and Q&A.

The NYC-based filmmakers, Jay Scala & Crystal White of White Ladder Productions and Gary Israel, President and CEO of the Dorothy M. Gillespie Foundation (<https://www.dorothygillespie.com/foundation>) will be at the reception and will also participate in the Q&A sessions after the screenings on Friday and Sunday.

continued on Page 31