

NC Institutional Galleries

continued from Page 51

Peck (UNC-Chapel Hill, BS '63, DDS '66) and his wife Leena donated their extraordinary collection of 134 mostly 17th-century Dutch and Flemish master drawings, as well as significant funds for the stewardship of the collection, new acquisitions, and an endowed curatorial position in European and American art before 1950. **Through May 28** - "Ghost of a Dream: Aligned by the Sun (Through the Revolution). In a time of travel bans, immigration debates, climate change, and a global pandemic, the artist team "Ghost of a Dream" has created their multi-faceted project "Aligned by the Sun" in an effort to bring hope to our collective experience and unify our fractured planet. To assemble the footage necessary for this endeavor, "Ghost of a Dream" has collaborated with artists in over 220 nations by asking them to capture a short video of the sunset. All but seven of the 195 countries recognized by the United Nations, as well as many non-UN nations and territories, are represented by these videos. These videos provide the source material for many iterations of the project, including large installations, video collages, and still-image composites. **Through July 30** - "Beyond Wood: Works from the Collection of Rhonda Morgan Wilkerson '86 (PHD)." Since 2018, the Ackland has exhibited five long-term installations of works from Rhonda Wilkerson's distinguished collection of African art. These have focused on an individual artist, on types of objects, and on specific functions. This presentation takes a different approach by highlighting a variety of materials, ones that differ from the wood of masks and figurative sculptures, more conventional works of art that have long been favored in museum displays of the arts of Africa. In contrast, the objects in Beyond Wood are made with materials associated more with utilitarian uses: glass, metal, and clay. They include a diviner's beaded necklace of the Yoruba culture (present-day Nigeria), an ornamental knife of the Konda culture (present-day Democratic Republic of the Congo) and two terracotta portrait heads from the Akan culture (present-day Ghana). This installation has been organized by Michael Baird, 2022 Joan and Robert Huntley Scholar at the Ackland, and PhD student in art history. **Museum Store Gallery** (Franklin and Columbia Street), Store hours: Mon.-Sat., 10am-5:30pm & Sun., noon-5pm. Museum Hours: Wed.-Sat., 1-5pm. Contact: 919/966-5736 or at (www.ackland.org).

FRANK, University Place, Chapel Hill. **Ongoing** - Featuring work from over 70 artists, Frank offers more than you'd expect from an art gallery. Frank is a collective, founded by the area's finest artists working together to open the door for creative innovation in the arts. Hours: Tue.-Sat., noon-5pm or by appt. Contact: Contact: 919/636-4135 or at (www.frankisart.com).

The ArtsCenter, 300-G East Main Street, Carrboro. **Ongoing** - Nurturing the arts in the triangle since 1974 through performance, education and exhibition. Hours: Mon.-Fri., 9am-9pm and Sat. 10am-5pm. Contact: 919/929-2787 or at (<http://artscenterlive.org>).

Charlotte Area



Jean Tinguely, "Albatros", 1991, 47 1/8" x 47 3/4". Gouache and acrylic on corrugated cardboard, © 2009 Artists Rights Society (ARS), New York/ADAGP, Paris.

Bechtler Museum of Modern Art, Levine Center for the Arts, 420 South Tryon St., Charlotte. **Second and Third Floor Gallery, On View Now** - The Collection. The Bechtler Museum of Modern Art is the only museum in the Southern United States dedicated to European and American Modern Art and its legacies. Capturing a remarkable era of art history from the collection of the Zürich-based Bechtler family, the Bechtler Museum of Modern Art collection includes works by some of the most important and influential figures of modernism. Featuring 28 key works of art and nine sculptures from The Bechtler Collection, this intimate exhibition is displayed throughout two of the museum's galleries. The second-floor gallery highlights two-dimensional artworks by Alexander Calder, Le Corbusier, Edgar Degas, Max Ernst, Alberto Giacometti, Hans Hartung, Barbara Hepworth,

Jasper Johns, Paul Klee, Fernand Legér, Alfred Manessier, Joan Miró, Kenneth Noland, Pablo Picasso, Bridget Riley, Niki de Saint Phalle, Gustave Singier, Nicolas de Staël, and Andy Warhol. The third-floor gallery is dedicated to select three-dimensional artworks and sculpture from the collection by artists including Raffael Benazzi, Miguel Berrocal, Max Bill, Lynn Chadwick, Eduardo Chillida, Robert Lieberhard, Bernard Meadows, and Elizabeth Turk. **Ongoing** - The Bechtler Museum of Modern Art is named after the family of Andreas Bechtler, a Charlotte resident and native of Switzerland who assembled and inherited a collection of more than 1,400 artworks created by major figures of 20th-century modernism and donated it to the public trust. The Bechtler collection comprises artworks by seminal figures such as Alberto Giacometti, Joan Miro, Jean Tinguely, Max Ernst, Andy Warhol, Alexander Calder, Le Corbusier, Sol LeWitt, Edgar Degas, Nicolas de Stael, Barbara Hepworth and Picasso. Only a handful of the artworks in the Bechtler collection have been on public view in the United States. Admission: Yes. Hours: Mon., Wed.-Sat., 10am-5pm; Sun. noon-5pm; and open until 9pm the 1st. and 3rd. Fri. of each month. Contact: 704/353-9200 or at (www.bechtler.org).

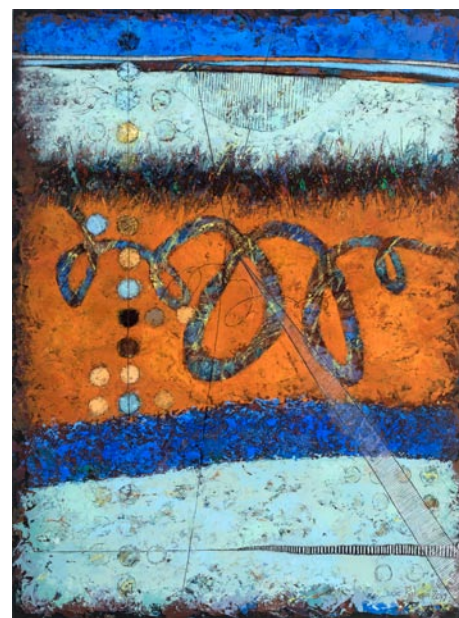
Bill and Patty Gorelick Gallery, at Central Piedmont Community College's Cato Campus, Cato III, 8120 Grier Road, Charlotte. **Through June 16** - "Calmly Flaunting," featuring works by Sam Spees. Samuel Spees' pursuit of perfection is the foundation of his inspiration as an artist and why he is drawn to glass as a process. "Each of us renders the world through a distinctive lens. This observation is biased in many ways, pertaining to memories and experiences, in addition to our own emotional construct. This body of work is evidence of how I decipher the beautifully perfect world around me. It is shaped with pieces of glass, both found and purposely made, that have been previously pulled, pinched, and cut. When melted together, they seamlessly flow throughout the body, creating a colorful vignette of time and memory. These landscapes of pigment yield a much deeper understanding of my perception, helping to explore distortion in pattern, together with my emotional connection to color in our natural world." **Through June 16** - "Bennett Waters Fine Art" Waters says, "I began painting after retiring from a long advertising career. I wanted to create something I could touch and hold, not just ideas. I paint primarily in oil and have spent nearly 20 years exploring how colors and shapes can become my new words. My subjects and series of artwork are varied but bend primarily toward two far flung viewpoints: capturing urban streetscapes and capturing the aerial perspectives of the earth. I choose subjects that can let me explore deep saturated color, the rhythms of shapes and movement, and the lines that connect them. Perspective is important to me in my compositions, as indicated in the subjects I choose and the way I paint them." Hours: open while campus is open, but reservations help us alert our security team to visitors, provide directions to the galleries, and COVID-19 security protocol instructions to the visitors. Contact: 704/330-6869 or e-mail to (foundation@cpcc.edu) to schedule an appointment. For directions to Central Piedmont's campuses, visit (cpcc.edu/locations).

Bill and Patty Gorelick Gallery, at Central Piedmont Community College's Central Campus, North Classroom, 1320 Sam Ryburn Walk, Charlotte. **Through June 16** - "Things That Fall in Your Path," featuring works by Stacy Crabill. Crabill says, "Sweets, text, and vintage photos of interesting people are all things that intrigue me. The colors and shapes of candy, as well as its packaging, has such power over our senses. I am constantly exploring the sources of our desire for sugar, delving into the concurrent roles played by clever marketing and our body's physical response. The thoughtful utilization of text also plays a role in my work. Whether it is a list of ingredients or witty words, the use of words and letters is an ever-present means of communication. Most recently I have incorporated interesting vintage images of figures. Photos from the past evoke a sense of questioning about the lives and personalities of those who came before us. My work strives to combine all of these seemingly unrelated elements to create a world in which their relationships become connected in a new and somewhat believable space." Hours: open while campus is open, but reservations help us alert our security team to visitors, provide directions to the galleries, and COVID-19 security protocol instructions to the visitors. Contact: 704/330-6869 or e-mail to (foundation@cpcc.edu) to schedule an appointment. For directions to Central Piedmont's campuses, visit (cpcc.edu/locations).

(cpcc.edu/locations).

Bill and Patty Gorelick Gallery, at Central Piedmont Community College's Harper Campus, Harper IV, 315 W. Hebron St., Charlotte. **Through June 16** - "The Ceramic Art of Joseph Sand. Joseph Sand (b. 1982, Austin, MN) trained as a sculptor at the University of Minnesota, receiving a B.F.A. in 2006. During his undergraduate courses, he studied for one year in Italy, followed by another year in England after receiving a very competitive, college-wide scholarship. While in England, he worked alongside many prolific potters, including Svend Bayer and Clive Bowen, which heavily influenced his direction as an artist, taking up functional pottery as a means of personal expression. He completed a three and one-half year apprenticeship with Mark Hewitt in December of 2009 and now resides in Randleman, North Carolina. His work combines the styles of traditional, Southern alkaline glaze ware and East Asian design, among others. Using two wood-fired kilns, both salt and ash glazed wares are produced, ranging in size from very large sculptural vases to planters and a variety of beautiful, functional tableware. In 2015, Joseph expanded his creative range to include large, hand-built sculptural ceramics. **Through Dec. 8** - "Layer and Lines," featuring works by Sudie Rakusin. Rakusin says, "Being an animal activist and feminist, my artwork flows from what moves me and from where I find beauty: women, animals, the earth, color, pattern and light. My art represents the deep connection I feel with these elements. Through my artwork I create a world as I would like it to be, where harmony exists between animal and human, and where nature thrives. My work includes pen and ink drawings, papier-mâché sculptures, abstracts in cold wax and oil, and 3-dimensional oil on canvas paintings featuring women and animals. "Art is where I go for refuge, replenishing, and how I pay homage to what sustains me. This body of work is cold wax and oil on wood panels. The properties of cold wax fascinate me and keep me curious; how the underlying layers inform and alter the layers applied over them, how incising and scraping and glazing make more changes. I know I am wielding the palette knife and mixing the colors, but what happens on the panel is beyond my control. I'm learning how to be fine with the state of 'not knowing'." Hours: open while campus is open, but reservations help us alert our security team to visitors, provide directions to the galleries, and COVID-19 security protocol instructions to the visitors. Contact: 704/330-6869 or e-mail to (foundation@cpcc.edu) to schedule an appointment. For directions to Central Piedmont's campuses, visit (cpcc.edu/locations).

Bill and Patty Gorelick Gallery, at Central Piedmont Community College's Harris Campus, Harris II, 3210 CPCC Harris Campus Drive, Charlotte. **Through Dec. 8** - "50-year Retrospective," featuring works by Shane Fero. Shane Fero was born in Chicago, IL in 1953 and has been a flameworker for 50 years and maintains a studio next to Penland School in North Carolina. He participates in international symposia and conferences by lecturing and demonstrating. Fero is also an educator and has taught at institutions such as Penland School, Urban Glass, the Pratt Fine Arts Center, the Studio of the Corning Museum of Glass, the University of Michigan, Eugene Glass School, Espace Verre, Montreal, Quebec, the Pittsburgh Glass Center, Pilchuck Glass School, Bild-Werk, Frauenau, Germany, the International Glass Festival in Stourbridge, UK, Scuola Bubacco, Murano, Italy, Chameleon Studio, Tasmania, Taiwan, China, Australia, Turkey and in Seto, Osaka, and the Nijijima Glass Art Center in Japan. **Through Dec. 8** - "Simple Gifts," featuring works by Lynn Newman. Newman moved to North Carolina in March 2020, after retiring from a career as an art teacher and program coordinator in Wyoming. Secluded in his new home during the onset of the pandemic, he sought comfort in his painting, focusing on florals and landscapes. He started working on a series of paintings based on the parks and scenes he and his wife enjoyed during their daily walks in their new surroundings. Painting helped him feel grounded and provided a sense of hope. Newman says, "In this time of uncertainty – emotionally, politically, and physically – it's my hope that others might interpret their own sense of solace and hope for the future with gifts as simple and as powerful as the flowers and landscapes we discover in our own backyards" Hours: open while campus is open, but reservations help us alert our security team to visitors, provide directions to the galleries, and COVID-19 security protocol instructions to the visitors. Contact: 704/330-6869 or e-mail to (foundation@cpcc.edu) to schedule an appointment. For directions to Central Piedmont's campuses, visit (cpcc.edu/locations).



Work by Sadie Rakusin

Bill and Patty Gorelick Gallery, at Central Piedmont Community College's Levine Campus, Levine II, 2800 Campus Ridge Road, Matthews. **Through Dec. 8** - "Layers and Lines," featuring works by Sudie Rakusin. Rakusin says, "Being an animal activist and feminist, my artwork flows from what moves me and from where I find beauty: women, animals, the earth, color, pattern and light. My art represents the deep connection I feel with these elements. Through my artwork I create a world as I would like it to be, where harmony exists between animal and human, and where nature thrives. My work includes pen and ink drawings, papier-mâché sculptures, abstracts in cold wax and oil, and 3-dimensional oil on canvas paintings featuring women and animals. "Art is where I go for refuge, replenishing, and how I pay homage to what sustains me. This body of work is cold wax and oil on wood panels. The properties of cold wax fascinate me and keep me curious; how the underlying layers inform and alter the layers applied over them, how incising and scraping and glazing make more changes. I know I am wielding the palette knife and mixing the colors, but what happens on the panel is beyond my control. I'm learning how to be fine with the state of 'not knowing'." Hours: open while campus is open, but reservations help us alert our security team to visitors, provide directions to the galleries, and COVID-19 security protocol instructions to the visitors. Contact: 704/330-6869 or e-mail to (foundation@cpcc.edu) to schedule an appointment. For directions to Central Piedmont's campuses, visit (cpcc.edu/locations).



Works by Jodi Lynn McNeely

Bill and Patty Gorelick Gallery, at Central Piedmont Community College's Merancas Campus, Merancas IV, 1930 Verhoeff Dr., Huntersville. **Through Dec. 8** - "The Works of Jodi Lynn McNeely". Charlotte artist Jodi Lynn McNeely has a drive to paint something, make something, or fix something. After taking numerous art classes at Central Piedmont Community College and participating in several ceramic workshops, Jodi built a studio and gallery on her property in South Charlotte, Her Industrial Design Bachelors Degree, ceramics education, and free form carvings have emerged as her signature style, creating unique pieces with structural integrity and aesthetic interest. Originally from Texas, Jodi is influenced by Mexican and Chinese Folk Art. Her brightly colored work often includes re-purposed wrought or cast iron. A form of journaling, her carvings many times feature people she has met on her journey. Hours: open while campus is open, but reservations help us alert our security team to visitors, provide directions to the galleries, and COVID-19 security protocol instructions to the visitors. Contact: 704/330-6869 or e-mail to (foundation@cpcc.edu) to schedule an appointment. For directions to Central Piedmont's campuses, visit (cpcc.edu/locations).

Bliss Gallery, established by Holy Angels, 25 N. Main Street, Belmont. **Ongoing** - Holy Angels established Bliss Gallery to offer persons who are differently able the opportunity to share creative abilities and showcase their art alongside the works of guest artists during special exhibitions. Hours: Hours: Wed.-Sat., noon-4pm. Contact: Harmony Heslop at 704/280-9475, e-mail at (blissgallery@holyanagsnc.org) or visit (www.holyanagsnc.org).