

NC Commercial Galleries

continued from Page 66

ough including: The Gallery at the Hillsborough Arts Council, Melissa Designer Jewelry, ENO Gallery, Hillsborough Artists Cooperative and The Skylight Gallery, Coldwell Banker Howard Perry and Walston, Cup A Joe, Callaway Jewelry & Spiral Studios, Sovero Art Gallery & Studio, Hillsborough Gallery of Arts, and The Depot at Hillsborough Station. For further info visit (www.lastfridaysartwalk.org).

Callaway Jewelry & Spiral Studios, 115 North Churton Street, Hillsborough. **Ongoing** - Offering beautiful handmade jewelry in sterling silver and gold by metalsmiths/designers Catharine Callaway and Jeannine Rogers. Hours: Mon.-Fri., 10am-6pm & Sat., 10am-4pm. Contact: 919/732-2013 or at (<http://www.sterlingspirals.com/>).



Work by Michael Brown

ENO Gallery, 100 South Churton Street, Hillsborough. **Through Apr. 21** - "Up Close and Far Away," featuring works by Michael Brown. "Up Close and Far Away," are two, or perhaps more accurately, a spectrum of modes in which we can look at things. We choose which mode to look at something based on its distance from us, on the level of detail we need. Working directly from nature, Brown captures both the up close abstractions of a landscape and the far away vistas of a distant view. His 'broken color' brush technique lends his paintings a sense of spontaneity. Yet, this seemingly loose brushwork reveals a carefully constructed composition that invites the viewer to share the artists' experience. **Ongoing** - The gallery represents exceptional contemporary emerging and established artists for both first time buyers and discerning collectors. Eno Gallery is a unique and intimate exhibition space. We offer work from artists of exceptional quality and dedication. Representing some of the most creative individuals from regional and national communities. Hours: Tue.-Thur., noon-6pm & Fri.-Sat., noon-8pm. Contact: 919/833-1415 or at (<http://www.enogallery.net/>).

Hillsborough Artists Cooperative and The Skylight Gallery, 102 West King Street, upstairs over Antonia's Restaurant, Hillsborough. **Ongoing** - Founded in 1992, featuring works by Jayne Bomberg and Tom Guthrie (The Studio of Collective Effervescence); Jennifer E. Miller, Andrea DeGette, Jacquelin Liggins, and Tiffney Marley. Hours: last Fri. of the month from 6-9pm or by appt. Contact: 919/929-2691 or 919/644-8637.



Work by Arianna Bara

Hillsborough Gallery of Arts, 121 N. Churton St., Suite 1-D, Hillsborough. **Through Apr. 28** - "Scratching The Surface," featuring turned wood and photography by Pat Lloyd, paintings by Ellie Reinhold and Kim Wheaton. **Apr. 22 - May 26** - "Between Earth & Sky," featuring works by Arianna Bara, Chris Graebner & Jude Lobe. A reception will be held on Apr. 26. from 6-9pm. In this show, Arianna Bara's pieces are inspired by time, time as it is reflected in and captured by stones and fossils. Bara works in silver, gold and copper. Chris Graebner works primarily in oil. Sky figures prominently in many of Graebner's landscapes. Last fall Graebner started a series of sunrise paintings based on photographs taken by her husband during their summer on Lake Huron. Jude Lobe is inspired by nature. It is the common thread throughout all of her work, whether painting in oil, cold

wax & oil, working in enamels or her small sculptures. **Ongoing** - The six year old gallery is owned and operated by 22 local artists and features painting, metal sculpture, photography, blown glass, kiln-formed glass, jewelry, turned wood, handcrafted furniture, pottery, mosaics and fiber arts. Holiday hours: Mon.-Thur., 11am-6pm; Fri. & Sat., 11am-8pm; & Sun., 1-4pm. Contact: 919/732-5001 or at (www.hillsboroughgallery.com).

Sovero Art Gallery & Studio, 121 North Churton Street, Suite 2-B, Hillsborough. **Ongoing** - Featuring jewelry and oil paintings by Peruvian artist David Sovero, who was born in 1971 in Lima, Peru. He graduated from the Peruvian National Arts College where he attended from 1990 -1996. He has a strong academic foundation. His Incan ancestral roots are saturated with thousands of years of Andean stylized figures. Hours: Mon.-Sat., 10am-7pm. Contact: 919/619-5616 or at (<http://soveroart.com/>).

Lenoir

Morning Song Gallery, at old Victorian house, 512 West Avenue, NW, across from the Lenoir Post Office and to the right of Baker Realty, Lenoir. **Ongoing** - Featuring works by local and regional artists. Hours: Call ahead. Contact: Margaret Carter Martine at 828/754-5693.

Lexington

The Bob Timberlake Gallery, 1714 E. Center Street Extension, Lexington. **Ongoing** - Featuring original artwork and reproductions by Bob Timberlake. Also furniture, gifts, apparel and collectibles. Hours: Mon.-Sat., 10am-5pm. Contact: 800-244-0095 or at (www.bobtimberlake.com).

Lincolnton

Gallery 317, located within Red Rabbit 27, 3265 E. Hwy. 27, half a mile from the intersection of Hwy. 73 & Hwy. 27 and just 2-1/2 miles east of Hwy 321, Lincolnton. **Ongoing** - The gallery currently represents national and regional contemporary artists including painters Karen Banker, Scott Boyle, and Sharon Dowell, ceramic artists Kimbrell Frazier, Erin Janow, and Raine Middleton, wood turner Paul Stafford, glass artist Jennifer Nauck, and fine art photographer Mary Whisonant. Works include oil, mixed media, and acrylic paintings, ceramics, exotic wood, photography, glass, and bronze. In addition watch local artists at work in the Art Mill, a colony of nine artist studios, located behind Gallery 317. Hours: Mon.-Fri., 10am-6pm & Sat., 10am-2pm or by appt. Contact: 1-888-558-2891 or at (www.gallery317.com).

Linville/Linville Falls Area

Anvil Arts Studio & Sculpture Gardens, Hwy. 221, Linville Falls. **Ongoing** - While in Linville Falls, be sure to come by and stroll through the gallery, studio, and sculpture gardens of artist Bill Brown. His works include contemporary sculpture, sculptural lighting, and paintings. You'll be drawn into each piece of art as it appeals to your understanding from a myriad of materials including steel, copper, bronze, and various patinas. Hours: Mon.-Fri., 9am-5pm should call ahead at 828-765-6226 or at (www.studiosculpture.com).

87 Ruffin Street Gallery, located next to the Old Hampton General Store and Barbeque, Hwy. 221 in Linville. **Ongoing** - The gallery features the work of local and regional folk artists, potters, figural wood carvers, glass artists and painters. This unique gallery also carries beautiful furniture handcrafted by local artists from local woods. The gallery has its own framing shop for all your picture framing needs. Whether you are looking for original artwork for your home or for a gift Ruffin Street gallery is the perfect destination. Hours: Mon.-Sat., 10am-5pm & Sun., 11am-5pm. Contact: 828/737-0420 or at (www.ruffinstreetart-gallery.com)

Mars Hill

Tom Turner Porcelain, 381 Turner Lane, Mars Hill. **Ongoing** - Featuring wheel thrown and high fired porcelain art pottery by Tom Turner with classical glazes like copper red oxblood, oilspot, celadons, and ash glazes. Hours: by appt. Contact: 828/689-9430 or at (www.tomturnerporcelain.com).

Marshall

Firewalker Gallery, Main St., across from the Madison County courthouse, Marshall. **Ongoing** - The gallery features artists from Madison County and east Tenn. who work in a variety

of mediums. Hours: Thur., Fri. & Sat., 10am-6pm and by appt. Contact: 828/649-0134 or at (www.firewalkergallery.com).

Mebane

Fine Art Carolina Gallery, 116 West Clay St., Mebane. **Ongoing** - The gallery offers traditional and contemporary art in various mediums. The gallery will also feature guest artists and offer art workshops in 2012. Owned and operated by artists featuring works by: Ali Givens, Jude Lobe, Celine Meador, Pat Scheible, and Pam Watts. Hours: Mon.-Sat., 11am-5pm. Contact: 919/455-5965 or at (<http://FineArtCarolina.com>).

Micaville

Crabtree Creek Art and Floral Gallery, 4161 E. Hwy 19-E, between Burnsville & Spruce Pine, in Micaville. **Ongoing** - A 2,400 sq. ft. gallery offering pottery, blown glass, paintings, stained glass, wood carvings and bowls, jewelry, handmade handbags, sweaters & hats, Christmas trees, ornaments and holiday decorations, metal sculptures and ironwork, handmade soaps and lotions, fragrances and candles, wildlife & floral photography, home accessories, lamps, handmade tables, chairs and home accents, silk floral creations and fresh floral arrangements, textile pieces, handmade baskets and local crafts from the western North Carolina region. Also a complete garden center with blooming plants, hanging baskets, dish and herb gardens is located on property including landscape art, hardscape and fountains. Hours: Tue.-Sat., 10am-5pm. Contact: 828/675-0612 or at (www.crabtreecreekgallery.com).

Mooreville

Andre Christine Gallery & Sculpture Garden, 148 Ervin Road, (on the right above Lone Star Steak House), Mooreville. **Through Apr. 17** - "Defining Ethereal". The exhibit brings in the original paintings of scenes, airy, celestial, spiritual, and deep emotional insight. Artists include: A. A. Ostrovsky, L.C. Neill, Sue Zylak, Sandie Bell, Becky Gleason, Nancy Marshburn, Lisa Mitchell, Donna Van Vleet, and newcomers B. A. Moncrieff, Tony Henson, & F. Baier, bring a variety of works to make a sensational exhibit. Several new steel sculptures will be added to the sculpture garden by Dana Gingras and Rick Lazes. **Ongoing** - Featuring works by jewelry designers Dawn Vertrees, Margie & Frank Gravina, and Janet Burgess; bronze sculptures by Armand Gilanyi and wood sculptures by Robert Winkler. Plus works by on going sculptor in residence Dana Gingras and sculptor Michael Alfano. Hours: Tue.-Sat., 10am-5pm & Sun. by appt. Contact: 704/664-1164 or visit (www.AndreChristineGallery.com).

Morehead City

BluSail Gallery, Artists' School & Pottery Studio, 903 Arendell Street, downtown art district, Morehead City. **Ongoing** - The gallery represents and exhibits work by over 30 local artists. The Artists' School and Pottery Studio are working studios designed to educate and enhance local talent for children and adults of all ages and all levels of experience. Hours: Mon.-Sat., 10am-5:30 or by chance. Contact: 252/723-9516 or at (www.blu-sail.com).

Budding Artists, Ltd., 3000 Arendell Street, Unit 9, Morehead City. **Ongoing** - The gallery provides custom framing and artist liaisons for commissioned pieces. Hours: Mon.-Sat., 10am-6pm. Contact: 252/247-5111.

Carteret Contemporary Art, 1106 Arendell St., Morehead City. **Ongoing** - Featuring original paintings and sculpture from regional and national artists, and shows with gallery artists during spring and summer. Hours: Mon.-Fri., 10am-5pm and Sat., 10am-4pm. Contact 252/726-4071 or at (www.twogalleries.net).

Morganton

Kalā - A Contemporary Craft Gallery, 100 W. Union Street, at the intersection of W. Union and S. Sterling Streets, across from the Historic Burke County Courthouse, Morganton. **Ongoing** - Kalā is a retail contemporary craft gallery featuring handcrafted art made in America that is affordable to everyday people. Representing over 100 local and regional artists as well as national artists, Kalā offers a wide range of works including pottery, jewelry, art glass, wood, metal and much more. Some of the local artists represented by Kalā include Valdese, NC, potter Hamilton Williams and five (5) painters from Signature Studio Artists of Morganton, NC. Hours: Mon.-Fri., 10am-6pm & Sat., 10am-5pm. Contact: 828/437-1806 at (www.kalagallery.com) and on Facebook.

MESH Gallery, 114-B W. Union St., Morganton. **Ongoing** - We feature local and regional artists, host poetry readings, wine tastings and

other events. We strive to offer something for everyone, from the progressive & urban to the traditional, folk and rural. Hours: Mon.-Fri., 9am-5pm & Sat., 10am-4pm. Contact: 828/437-1957 or at (www.meshgallery.com).

Nags Head

Seaside Art Gallery, 2716 Virginia Dare Trail South, Nags Head. **Ongoing** - Featuring works of local and contemporary artists, as well as a wonderful selection of art by such masters as Picasso, Chagall, Whistler, Icaro, Renoir and many others. Sculpture, porcelain and art glass by Hummel, Staffordshire, Tiffany and others are represented. As well as a fine selection of estate jewelry. Since the early 1980's, a major feature of Seaside Art Gallery has been our large collection of original animation art by such studios as Disney, Warner Bros., Hanna-Barbera, United Features Ltd., and other animation studios. Hours: Mon.-Sat., 10am-5pm. Contact: 252/441-5418, 1-800/828-2444 or at (<http://www.seasideart.com/>).

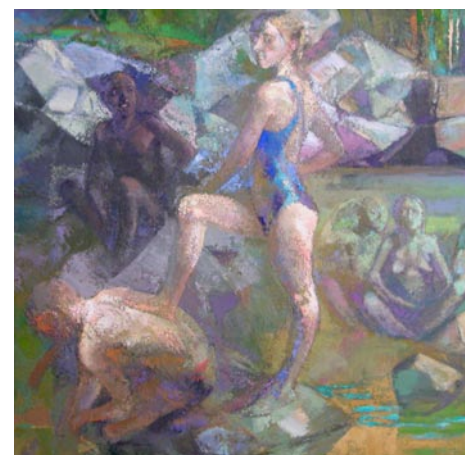
New Bern

Downtown New Bern, May 10, 5-8pm - "ArtWalk". Come and enjoy special events at downtown business in New Bern featuring art and a festive evening. Contact: for info call Carolina Creations at 252/633-4369 or visit (www.carolinacreations.com).



Work by Jane Horner

Carolina Creations Fine Art and Contemporary Craft Gallery, 317-A Pollock Street, New Bern. **Through Apr. 30** - "TWINS," featuring works by Jane and Nancy Horner. The exhibited works are expressions of two distinctly individual lives. **May 1 - June 30** - "Annual Garden Show," featuring art of and for the garden. Sculpture, windchimes, birdhouses and bird feeders, paintings, pottery, all with a garden theme. A reception will be held on May 10, from 5-8pm, held during the New Bern ArtWalk. **Ongoing** - Featuring fine art and contemporary crafts including pottery, paintings, glass, sculpture, and wood by over 300 of the countries top artists. Hours: Mon.-Sat., 10am-6pm; Fri., till 8pm; & Sun. 11am-4pm. Contact: 252/633-4369 or at (www.carolinacreations.com).



Work by Lincoln Perry

New Bern ArtWorks & Company, located in Studio 323, "Home of Working Artisans" (formally the historic Baxter's Jewelry Store), 323 Pollock Street, New Bern. **Through Apr. 30** - Featuring an exhibit of works by contemporary artist Lincoln Perry. Perry is a contemporary painter and sculptor possessed by learning from the past and translating it into something new. Perry currently serves as the distinguished visiting artist at the University of Virginia, where he has been creating a massive mural in Cabell Hall—a McKim, Mead, and White building on the UVA campus. It's titled The Student's Progress. There are eleven panels, twelve and a half feet high and a total of seventy-two feet across. **Ongoing** - A fine art gallery dedicated to promoting regional and national artists; bringing awareness and appreciation of fine art to the community through exhibits, shows, demonstrations and by providing fine art to established and new art lovers. We offer a diverse selection of styles, subject matter and mediums including paintings, pottery, ceramics, sculpture, photography, and jewelry. Hours: Mon.-Fri. 10am-6pm & Sat., 10am-5pm. Contact: 252/634-9002 or at (www.newbernartworks.com).

continued on Page 68