

NC Institutional Galleries

continued from Page 58

- "The Places in Between," featuring landscape paintings by Anthony Ulinski. A reception will be held on Apr. 5, from 6:30-9pm. The title refers to the subjects of the paintings—towns, farms and lands of eastern North Carolina that Ulinski frequently traveled through going to and from his home in Raleigh and on the coast. Admission: Free. Gallery Hours: Mon.-Sat., 9am-4:45pm & Sun., noon-4:45pm. Store Contact: 919/733-7450, ext. 360 or at (www.natural-sciences.org/store/nature_gallery.html).



Jules Joseph Lefebvre, *Une Japonaise (The Language of the Fan)*, 1882, oil on canvas, 51 x 34 1/2 in., Chrysler Museum of Art, Norfolk, Va., Gift of Walter P. Chrysler Jr., 71.2058

North Carolina Museum of Art, 2110 Blue Ridge Road, Raleigh. **Julian T. Baker Jr. Gallery, Through June 30** - "Wanderlust: Photographs by Alec Soth". Based in Minneapolis, MN, photographer Alec Soth (b. 1969) specializes in large-format color photographs that tell the stories of specific places. This exhibition features 15 photographs by Soth from the collection of Allen G. Thomas Jr. from two recent series, "Sleeping by the Mississippi" (1999-2002) and "NIAGARA" (2004-2005). **East Building, Gallery 2, Through May 26** - "Object of Devotion: Medieval English Alabaster Sculpture from the Victoria and Albert Museum." Visitors will experience a rare glimpse into the spiritual lives and religious customs of medieval Christians during the run of this exhibition. These alabaster reliefs and freestanding figures, drawn from the finest such collection in the world, were displayed in chapels and churches as well as in private homes. Intricately crafted, these 60 works are some of the finest examples of religious sculpture produced in England from the late 14th through the early 16th century. **East Building, Meymandi Exhibition Gallery, Through Aug. 11** - "0 to 60: The Experience of Time through Contemporary Art," co-organized by the NCMA and Penland School of Crafts, highlights a current trend in contemporary art: exploring the intersection of time and art by artists who employ innovative and experimental techniques. This collaborative, multimedia exhibition is on view simultaneously at both sites, featuring a major exhibition and outdoor installations at the NCMA and a series of artist residencies and installations at Penland, accompanied by a fully illustrated catalogue that covers the projects at Penland and the NCMA. **North Carolina Gallery, Through July 28** - "Dwelling: Interiors by Page H. Laughlin and Pamela Pecchio," featuring an exhibition of photographs and paintings by two contemporary artists, examines and compares the investigations of interior spaces in each artist's recent body of work. Showing Pecchio's Habitation series alongside Laughlin's works based on design magazines reveals strikingly similar themes and aesthetics, though the artists are working separately and in different mediums. The dialogue created between these works further enriches them, drawing visitors into a new conversation about the variations of depicting domestic interiors and the underlying tensions in such imaginings. **West Building, Apr. 1 - Feb. 7, 2014** - "Masterworks from the Chrysler Museum". The exhibition presents a series of loans selected by NCMA Curator of European Art David Steel from the Chrysler Museum in Virginia. Interspersed throughout the galleries, 18th- and 19th-century paintings and sculptures by such masters as Edgar Degas, Pierre-Auguste Renoir, Francesco Bertos, Mary Cassatt, and Auguste Rodin are strategically installed next to related works in the NCMA's permanent collection, inspiring dialogue among the works. **West Building, Ongoing** - Featuring 10 additional sculptures by the celebrated French artist Rodin on loan from Iris Cantor's private collection. **Ongoing** - "John James Audubon's The Birds of America". The state has owned this treasured volume since 1848, but it has never been exhib-

ited. **Ongoing** - The North Carolina Museum of Art has an outstanding permanent collection of more than 5,000 objects spanning antiquity to the present day. On the occasion of the expansion, the Museum has acquired more than 100 new works of art. Representing commissions, gifts, and purchases, the new works encompass important and diverse examples of historic and contemporary art from around the world, and will be installed in the Museum's new building and the surrounding landscape. Highlights include a gift of 28 sculptures by Auguste Rodin, and work by such internationally acclaimed artists as Roxy Paine, Ursula von Rydingsvard, El Anatsui, Jaume Plensa, Jackie Ferrara, Ellsworth Kelly, and David Park, among others. Hours: Tue.-Sat., 9am-5pm; Sun., 10am-5pm; & open until 9pm on Fri. Contact: 919/839-6262 or at (www.ncartmuseum.org).

North Carolina Museum of History, 5 East Edenton Street, (between Salisbury and Wilmington Streets), Raleigh. **Through Sept. 1** - "Art in Clay: Masterworks of North Carolina Earthenware," will celebrate the achievements of earthenware potters during the 18th and 19th centuries. This landmark exhibition showcases nearly 200 objects made by Piedmont potters. The exhibition was organized by Old Salem Museums & Gardens. Among the most masterful items are slipware dishes created by Moravian potters at Salem and Bethabara (in present-day Forsyth County) and by contemporary Germanic and British craftspeople in other areas of the Piedmont region. "Art in Clay" features pottery from distinguished public and private collections. **Ongoing** - Featuring exhibits dealing with North Carolina's history as a theme. Admission: Free. Hours: Mon.-Sat., 9am-5pm & Sun., noon-5pm. Contact: 919/807-7900 or at (<http://www.ncmuseumofhistory.org/>).

Rotunda Gallery, Johnson Hall, Meredith College, 3800 Hillsborough Street, Raleigh. **Apr. 11 - Aug. 26** - "Annual Juried Student Art Exhibition". A reception will be held on Apr. 11, from 4-6pm. This annual survey exhibition highlights the range and depth of Meredith College's art students' work in sculpture, painting, drawing, photography, textiles, graphic design, ceramics, and mixed media. Hours: Mon.-Fri., 9am-5pm & Sat.-Sun., 2-5pm. Contact: 919/829-8465 or at (<http://www.meredith.edu/art/gallery.htm>).

The Crafts Center at NC State University, first floor of Thompson Hall, Jensen Drive, NC State University, Raleigh. **R.A. Bryan Foundation Gallery, Through June 16** - "Ellen Ko: Chinese Brush Paintings". Ellen Ma-Lin Ko started taking traditional Chinese brush painting as a child from two well-known professional artists in Taiwan, Lin Shen-Jean and Shao Yu-Huan. She has continued her practice of Chinese brush painting ever since her graduation from the World College of Journalism in Taiwan. Her artwork has been shown in several local art shows and art galleries here and in Atlanta, GA. Her painting has been accepted in many juried shows and she has won many art awards and bank purchase awards. Hours: Mon., Wed., & Fri., 2-10pm; Tue. & Thur., 10am-10pm; and Sat. & Sun., 12:30-5pm. Contact: 919/515-2457 or at (<http://www.ncsu.edu/crafts/index.html>).

The WONC Gallery, Woodworkers of North Carolina, 3141 Capital Boulevard #110, inside the Klingspor Woodworking Store, Raleigh. **Ongoing** - North Carolina has a rich history in woodworking. WONC strives to keep this tradition alive by bringing together all of the different styles and forms of woodworking together and sharing them with everyone. Workshops are held to teach, share and inspire. Our parents taught us the value of fine craftsmanship. It is our goal to see that this tradition continues by sharing the joys of woodworking to all. Hours: Mon.-Fri., 9am-6pm; Sat., 9am-5pm; & Sun. 1-5pm. Contact: 919/876-0707 or at (www.woncgallery.org).

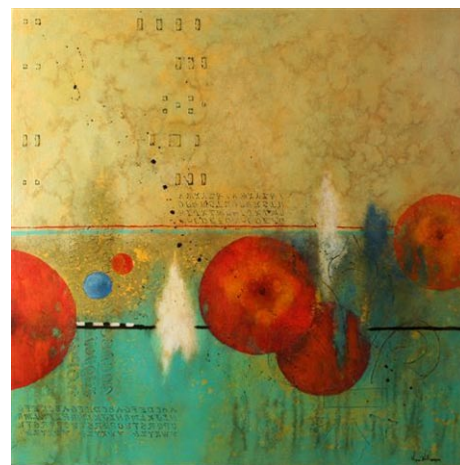
Visual Art Exchange Association Gallery, 325 Blake Street, Moore Square Art District, Raleigh. **Apr. 5 - 25** - "Unfettered," featuring a free and unrestrained exhibit with no restrictions. A reception will be held on Apr. 5, from 6-10pm. **May 3 - 30** - "Snapshot," featuring an exhibit of unframed photographs. A reception will be held on May 3, from 6-10pm. Hours: Tues.-Sat., 11am-4pm. Contact: 919/828-7834 or at (<http://www.visualartexchange.org/>).

ALTERNATE ART SPACES - Raleigh **Progress Energy Center for the Performing Arts**, 2 East South Street, Raleigh. **Betty Ray McCain Gallery, Through May 2** - "35th North Carolina Artists Exhibition," presented by the Raleigh Fine Arts Society and juried by Bill Dunlap. This juried exhibition for multimedia

visual art features established and emerging artists from more than 60 counties across North Carolina. Dunlap has distinguished himself as an artist, arts commentator and educator during a career that has spanned more than four decades. His paintings, sculpture and constructions are included in prestigious collections, including the Metropolitan Museum of Art and Corcoran Gallery of Art. For more information contact: Lillian Richardson by calling 919/368-6829 or visit (www.raleighfinearts.org). Hours: during performances or call. Contact: call 919/831-6060 for hours and directions.

Rocky Mount

Maria V. Howard Arts Center, Imperial Centre for the Arts and Sciences, 270 Gay Street, Rocky Mount. **Through May 12** - "Waves of GRAIN: A woodworker's Compilation of Handmade American Studio Furniture," featuring works by Patrick Fullwood. Fullwood has worked as a professional cabinet maker for Wood Products, Inc. since 1985, but it is his personal pursuit of combining creativity and techniques which has yielded him numerous awards. From the NC State Fair to "Living in Style" magazine, his functional but modernist woodworks attract attention and create excitement in viewers. He is a member of the Piedmont Craftsmen and has exhibited at fine arts museums and galleries throughout the state. **Through May 5** - "New Aesthetic: Nash-Edgecombe High Schools Juried Art Competition". This competitive exhibition showcases art from students enrolled in 9th-12th grades in public, private, and home schools in Nash and Edgecombe counties. "Mylo", an ink stippled study by Tonya Parker, grade 11, from Nash Central High School received first place in the 2012 exhibition. **Through May 19** - "Handcrafted: A Juried Exhibition of Ceramics, Fiber, Glass, Metal, Wood". Handcrafted is a national juried craft exhibition in its 15th year attracting a variety of traditional, mixed and new craft media from across the United States. A different unbiased juror is contracted each year to make selections for exhibition. The 2013 juror is Marc Maiorana, a celebrated blacksmith and owner of Iron Design Company in Cedar Bluff, VA. **Through May 19** - "Cabin Fever Quenched". Each spring Pocosin Arts Folk School offers a unique workshop series at the 4H Center in Columbia, NC called "Cabin Fever Reliever". A professional lineup of instructors in clay, metals, wood, photography, painting, bookmaking, fiber arts, and mixed media lead students of all skill levels in the creation of art objects and break the tension of long cold winters. As a co-sponsor of "Cabin Fever Reliever," the Arts Center invites past and upcoming instructors of Cabin Fever to increase awareness of this opportunity for artistic expression and learning in our area through an annual exhibition. **Through Dec. 31** - "Lena Bulluck Davis". The Arts Center is home to the largest public collection of works by Edgecombe County artist Lena Bulluck Davis. An untrained folk artist, Davis was born October 23, 1882 on her great grandfather's farm in Edgecombe County. At the age of 53 (1935), she began painting lessons in Raleigh, NC, as part of a WPA project. By the time she was 59, five years after being stricken with acute arthritis, she began painting in earnest, devising a way to hold the brushes with arthritic hands. She lived and painted until age 85, a very determined and creative spirit. Hours: Tue.-Sat., 10am-5pm & Sun., 1-5pm. Contact: 252/972-1163 or at (<http://arts.imperialcentre.org/>).



Work by Myra Williamson

Mims Gallery, Dunn Center for the Performing Arts, NC Wesleyan College Campus, 3400 N. Wesleyan Blvd., Rocky Mount. **Apr. 5 - May 5** - "Myra Williamson - New Orleans Artist Paints Curious Abstractions of the North Carolina Backwaters and Her Home City". A reception will be held on Apr. 5, from 7-9pm. Born in Krotz Springs, Louisiana, a tiny town between Baton Rouge and Opelousas, Williamson grew up drawing. It never occurred to her that she would be an artist one day and her parents did not encourage an artistic career. Because she loved "the way art looks on a bare wall" she began creating fine art paintings for her own home. When friends from New Orleans asked to purchase her art, her life as an artist began. Hours: Mon.-Fri., 9am-5pm & one hour before performances. Contact: call 252/985-5268 or at (www.ncwc.edu/Arts/Mims/).

North Civic Gallery, Dunn Center for the Performing Arts, NC Wesleyan College Campus, 3400 N. Wesleyan Blvd., Rocky Mount. **Through May 19** - "International Pets," featuring a poster art/ mail art exhibition. Hours: Mon.-Fri., 9am-5pm & one hour before performances. Contact: call 252/985-5268 or at (www.ncwc.edu/Arts/Mims/).

Rutherfordton

Rutherford County Visual Artists Gallery, Rutherford County Visual Arts Center, 160 N. Main St., Rutherfordton. **Ongoing** - Featuring works by members of the Rutherford County Visual Artists Guild in a wide variety of media. Hours: Tue.-Sat., 10am-3pm and Fri. till 6:30pm. Contact: 828/288-5009, e-mail at (rcvartg@gmail.com) or at (www.rcvartg.com).

Salisbury/Spencer

Throughout Salisbury & Spencer, Apr. 13, from 1-5pm - "Second Saturday Art Crawl," where more than 20 professional artists, studios and galleries offer visitors new art, special events, and activities. Spend the day and see great art, talk to artists, hear live music, and dine at local restaurants. Free admission to all events and activities. Maps are available at the Visitor Center in Salisbury and at all participating venues. Free parking available in all locations. For more info call 704/638-9887 or visit (www.rowanartcrawl.com).

North Carolina Transportation Museum, 411 S. Salisbury Avenue, Spencer. **Master Mechanic's Office, Through July 4** - "Dusty Roads," featuring a collection of 41 digital photographs by Barbara Sammons of old, rusty cars, trucks and tractors that are found on the back roads of North and South Carolina. Sammons is an award-winning photographer and published writer with over 40 years behind the camera. Her favorite subjects to photograph are classic cars, junkyard cars and trucks, old buildings and Mother Nature. Admission: Yes. Hours: Wed.-Sat., 9am-5pm & Sun., 1-5pm. Contact: 704/636-2889 or at (<http://www.nctrans.org/>).

Waterworks Visual Arts Center, 123 E. Liberty St., Salisbury. **Through May 11** - "Visual Places: Evolving from Nature". Four artists, Sharon Dowell, Mark Gordon, Isaac Payne, and Patricia Steele Raible, reflect on the intersection of architecture and nature through the use of form, texture, and surfaces. This exhibit is about man and his environs, focusing on the context of displacement, nostalgia, identity, existence, construction, and deconstruction. These bodies of work cross the dimensions of art, ecology, economy, science, spirituality, and activism by addressing the condition in and around our changing urban atmosphere. The exhibit explores our social existence and concern for the fast growing urban development and diminishing natural environment. Also on view is "Celebrating Rowan County's Young Artists" in the Young People's Gallery. Now in its 30th year, this rotating display of artwork features the works of nearly 800 students representing Salisbury-Rowan County's public, independent, and home-schooled students. The schedule includes: Independent and Home-Schooled through Apr. 17 (Reception Apr. 11, 5-6:30pm); and Rowan-Salisbury High Schools, from Apr. 20 - May 11 (Reception May 2, 5-6:30pm). Admission: Free, donations appreciated. Hours: Mon.-Fri., 10am-5pm; Thur. till 7pm & Sat., 11am-3pm. Contact: 704/636-1882 or at (www.waterworks.org).

Seagrove Area

Throughout the Seagrove area, Apr. 20-21, 2013 - "5th Annual Celebration of Spring Kiln Openings & Studio Tours in Seagrove". Seagrove potters are again coming together to create an eventful weekend with something for everyone. Over 65 clay artists will be offering special events and kiln openings throughout Seagrove this weekend. Spring has always been a time for renewal and awakening in Seagrove and this year an unprecedented number of shops are opening their doors at the same time to Celebrate spring with special events. It's a great weekend to come out and leisurely browse, shop and experience a 200-year-old tradition, see the process, develop and renew relationships with the potters of Seagrove. Each shop is celebrating Spring in its own way. Hours may differ from shop to shop. Contact: visit (<http://www.celebrationofseagrovepotters.com>).

Museum of North Carolina Traditional Pottery, 122 E. Main St., Seagrove. **Ongoing** - The Museum organization was founded twenty-five years ago in Seagrove, and is dedicated to preserving and perpetuating the pottery tradition. We strive to impart to new generations the history of traditional pottery and an appreciation for its simple and elegant beauty. A display of area pottery is now offered in the old Seagrove

continued on Page 60