

Lark & Key Gallery in Charlotte, NC, Features Works by Vicki Sawyer & Paula Smith

Lark & Key Gallery and Boutique in Charlotte, NC, will present *Wit & Whimsy*, featuring paintings by Vicki Sawyer and pottery by Paula Smith, on view Apr. 5 through May 31, 2013. A reception will be held on Apr. 5, from 6-9pm. Both artists exhibit a playful, lighthearted quality in their work. Inspiration comes from the natural world – flora and fauna.

Vicki Sawyer's delight for appreciating little things came early in life. As a small girl her grandfather taught her how to identify the plants on their walks in the woods. Her mother's childlike joy in even the simplest things taught her to be visually aware. From her dad she received a love for birds.

Sawyer's path led her to a degree in art after which she worked as a graphic artist, a doll designer and eventually muralist. Most of her murals focused on birds, insects, animals, grasses, and wildflowers. Painting these murals gave her an opportunity to display the images she loved as a child. On a walk one day she thought, "If birds could build nests, then they could make hats." This whimsical notion became the inspiration for Sawyer's bird and animal portraits.

Sawyer lives in Franklin, TN, and paints on canvas now instead of walls and ceilings, but her goal has not changed. She hopes to move people with her art - with feelings of peace, joy, and often humor.

Paula Smith was involved with art at an early age and has continued to immerse herself in the arts throughout her life. She began taking classes at the Kansas City Art Institute before leaving high school



Works by Paula Smith

and finished with a degree in ceramics before moving on to receive her MFA at the University of Illinois, Champaign-Urbana.

Most of Smith's career in ceramics has been focused on narrative sculptural work - telling stories through the use of female imagery, including the torso, the archetypal house form, and the vessel. Smith is also interested in the use of Milagros, or miracles in Spanish, and their symbolism. Milagros are small charms of various body parts, sacred hearts or other objects of importance to daily life.

These ideas are also incorporated into Smith's functional pottery, along with more organic references such as wood, flowers, leaves and animal imagery. Smith's love of life and playfulness is evident in her interpretation of these elements. She currently lives in Rock Hill, SC, and is a ceramics instructor at CPCC in Charlotte, NC.

For further information check our NC Commercial Gallery listings, call the gallery at 704/334-4616 or visit (www.larkandkey.com).

Charlotte ARtery in Charlotte, NC, Offers Exhibit of Cats & Dogs

The Charlotte ARtery in Charlotte, NC, will present *It's Raining Cats & Dogs!*, a juried art exhibit connecting art, the community and a good cause, benefiting the CMPD Animal Care and Control, on view from Apr. 5 - 26, 2013. A reception will be held on Apr. 5, from 6-9pm, donations are requested (see below list of items).

Charlotte ARtery presents a juried art exhibit to benefit the CMPD Animal Care and Control. ARtery will shower CMPD Animal Care and Control with appreciation by featuring works in a variety of media, created by local artists, depicting cats and dogs. Ultimately, the goal is to bring awareness to the Charlotte community on the incredible rescue work done by CMPD Animal Care and Control.

Participating artists include: (Guest Artists) Carol Clayton, Caroline Coolidge Brown, Cindi Spillman, Elyse Marie Frederick, Esty Kurti, Jane A Wiley, Lynn Dubnicka, Michael Henry, Rachel Ohls, Robert Chueng, Susan Nuttall, Walter Stanford, (Member Artists) Bev Nagy, Diane Pike, Julie Benda, Laura Mcrae-Hitchcock, Raine Middleton, Shelley Pawlyk, Teresa Hollmeyer, and Tina Alberni.

The event is free but we are encouraging donations for items that are on CMPD Animal Care Control's Wish List—dry / canned pet food, peanut butter, Kongs, Nylabones, Busy Buddy Dog toys or Soft Paws.

Part of Charlotte Artery's mission is



Work by Laura McRae-Hitchcock

to promote group exhibitions by local/regional artists and foster the visibility of the artists in the local community. We strive to raise the bar for professional standards through juried exhibitions and special events. With this show we connect art, the community and a good local cause.

In addition to featuring juried work, this show will also highlight the work of current ARtery members and many works will be available for sale.

Through art, help us celebrate all that CMPD Animal Care and Control does for our pets and for our community.

For further information check our NC Institutional Gallery listings, call the ARtery at 704/604-3832 or visit (www.charlotteartery.com).

Jerald Melberg Gallery in Charlotte, NC, Features Works by Rick Horton

The Jerald Melberg Gallery in Charlotte, NC, will present *RICK HORTON: The Late Works*, on view from Apr. 6 through May 11, 2013.

This solo exhibition presents works by Concord, NC, native Rick Horton (1954-1990). Horton accomplished much in his

short life of 35 years. The paintings in this exhibition, created in the last two years of his life, are filled with angst and amazing energy. There is a pronounced change in these works from earlier paintings. He seemed to throw every bit of humanity

continued above on next column to the right

BODNER and REA at SHAIN

SHAIN
GALLERY



2823 SELWYN AVE.

CHARLOTTE NC

28209

704 334 7744

SHAINGALLERY.COM

he possessed into each one, painting with his hands and fingers because he did not want any particular tool to come between himself and the medium. They are powerful works of art that show anger and hope, mystery and intensity.

Horton participated in over sixty gallery and museum exhibitions and was collected by institutions such as the Asheville Museum of Art, Duke University Museum of Art, the Mint Museum of Art, the Museum of Modern Art and the Metropolitan Museum of Art in New York, among others. He was also honored with numerous awards, including prestigious fellowships from both the Pollock-Krasner Foundation and the Ingram Merrill Foundation.

For further information check our NC



Work by Rick Horton

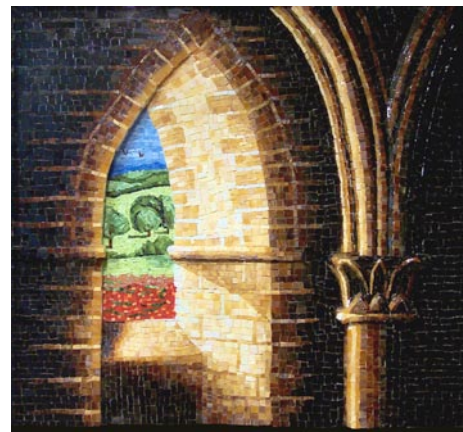
Commercial Gallery listings, call the gallery at 704/365-3000 or visit (www.jeraldmelberg.com).

Ciel Gallery in Charlotte, NC, Offers Exhibition Focused on the Garden

The Ciel Gallery in Charlotte, NC, will once again present *Back to the Garden*, a popular exhibition focused on the springtime romp through the delightful, the delicious, the decadent and the divine, on view from Apr. 5 through June 1, 2013. A reception will be held on Apr. 5, from 6-9pm.

The juror is second-generation mosaic artist Yulia Hanansen, an internationally known award-winning artist and owner of Mosaic Sphere Studio in Maryland. In addition to garden-themed mosaic and mixed media fine art, the show will feature both functional and fanciful garden elements and a large fantasy sculpture created by community members.

For further information check our NC Commercial Gallery listings, call the



Work by Shawn Hewton

gallery at 704/577-1254 or visit (www.cielcharlotte.com).

Don't see anything here about your exhibit or art space?

Did you send us the info by deadline?

The deadline each month to submit articles, photos and ads is the 24th of the month prior to the next issue. This will be Apr. 24th for the May 2013 issue and May 24 for the June 2013 issue. After that, it's too late unless your exhibit runs into the next month. But don't wait for the last minute - send your info now.

And where do you send that info?

E-mail to (info@carolinaarts.com) or mail to:
Carolina Arts, P.O. Drawer 427, Bonneau, SC 29431