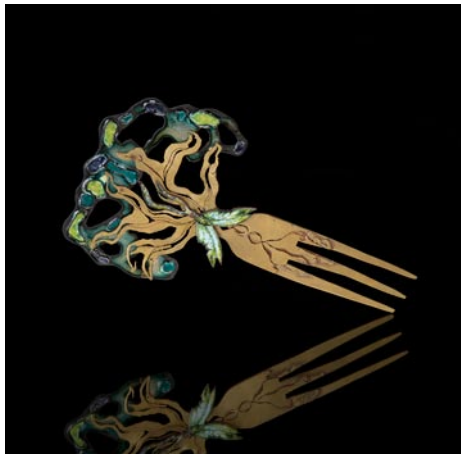


SC Institutional Galleries

continued from Page 35



"Living Waters" by Jayla Jenkins, 2024 Best in Show

and printmaker who retired more than a decade ago from the Greenville County Fine Arts Center, where he taught for 32 years. The exhibition is presented by Greenville Technical College's Department of Visual Arts. The Awards Presentation is on Wednesday, Apr. 16, beginning at 6:30pm. All Upstate High School art programs are invited to participate so "AUHSAE" is a true survey of the quality and variety of visual arts in Upstate high schools. Hours: Mon.-Thur., 9am-7pm & Fri., 9am-2pm. Contact: Fleming Markel, by e-mail at (fleming.markel@gvltec.edu); Gallery Director or Pat Owens by e-mail at (pat.owens@gvltec.edu) or call 864/250-3051.

ALTERNATE ART SPACES - Greenville Centre Stage Theatre Gallery, 501 River Street, Greenville. **Mar. 7 - Apr. 18** - "BE//MUSE," featuring works by Kim Dick. A reception will be held on Mar. 6, from 6-8pm. **Ongoing** - Featuring works by visual art members of MAC. Exhibits are offered in collaboration with the Metropolitan Arts Council. Hours: Tue.-Thur., 2-5pm & 2 hr. prior to shows. Contact: MAC at 864/467-3132, at (www.greenvillearts.com/mac-featured-galleries/).

Greenwood

Arts Center of Greenwood, at the Federal Building, 120 Main Street, Greenwood. **Ongoing** - Featuring works by local and regional artists. Hours: Mon.-Fri., 10am-5pm & Sat., 10am-3pm. Contact: 864/388-7800 or at (www.emeraldtriangle.us/arts-center/).

Lander University Fine Art Gallery, Cultural Center Building, 320 Stanley Ave., Greenwood. **Ongoing** - The Lander University Fine Art Gallery features a variety of exhibits throughout the year. The gallery features national and regional artist, as well as student and faculty work showcasing painting, sculpture, ceramics, graphic design, and photography. Hours: Mon.-Fri., 10am-4pm. Contact: call Jon Holloway at 864/388-8810 or at (<https://www.facebook.com/pages/category/Art-Gallery/Lander-University-Fine-Art-Gallery-166498067092236/>).

Greer

Edward R. Driggers City of Greer Center for the Arts, 804 Trade St., Greer. **Ongoing** - Featuring artists studios. Hours: Tue., noon-8pm; Fri., 9am-3pm; & Sat., 10am-2pm. Contact: call Sara Odem at 864/5383 or at (<http://greerculturalarts.com/>).

Hartsville

Black Creek Arts Center, 116 West College Ave., Hartsville. **Ongoing** - Featuring works by local and regional artists. Hours: Tue.-Thur., 10am-1pm and 2-5pm; Fri., 10am-2pm and 1st Sat. of the month 10am-1pm. Contact: 843/332-6234 or at (www.blackcreekarts.org).

Hartsville Museum and Sculpture Courtyard, 222 North Fifth Street, corner of Fifth Street and Home Avenue, Hartsville. **Ongoing** - Housed in a 1930's Post Office Building, the museum has kept many of the unique architectural features of the building. The skylight, original to the building, has been retrofitted with stained glass panels depicting the flora and fauna significant to the area. The Sculpture Courtyard added in 2000 features many different types of sculpture. The Showcase Gallery presents special exhibits focusing on history, the arts or present day events. Hours: Mon.-Fri., 10am-5pm (closed from noon-1pm on Fri.). Contact: 843/383-3005 or at (www.hartsvilmuseum.org).

The Patz Fowle Visual Arts Studio, SC Governor's School for Science + Mathematics, 401 Railroad Avenue, Hartsville. **Ongoing** - A public, boarding high school for students in grades 11 and 12. The school concentrates on science and mathematics, but offers the full spectrum of the humanities as well. For info visit (www.scgssm.com).

org)

Hilton Head Island Area



Work by Nancy Mitchell

Art League of Hilton Head Gallery, at the Arts Center of Coastal Carolina, 14 Shelter Cove Lane, Hilton Head Island. **Mar. 4 - Apr. 4** - "Land and Sea: Animals Above and Creatures Below," featuring works by Nancy Mitchell and Susie Parker. A reception will be held on Mar. 5, from 5-7pm. Nancy and Susie will also be holding artists' demos on Saturday, March 8, 1-3pm. The exhibit, reception and demos are free and open to the public. The show is a celebration of nature, featuring paintings and sculptures depicting land animals and sea life found in the Lowcountry and beyond. Mitchell's impressionistic animal forms and paintings in soft, muted tones contrast beautifully with Parker's boldly colored sculptures, often made from found objects and finished with whimsical details. **Ongoing** - Featuring works by members of the Art League of Hilton Head. Hours: Mon.-Sat., 10am-4pm. Contact: 843/681-5060 or at (www.artleaguehhi.org).



Aldwyth, "Casablanca" (classic) and "Casablanca" (colorized), 2004 - 2006

Coastal Discovery Museum, at Honey Horn, off Highway 278, across from Gumtree Road, Hilton Head Island. **Main Gallery, Through Mar. 23** - "This is Not: Aldwyth in Retrospect". The Coastal Discovery Museum, a Smithsonian Affiliate, is pleased to present an exhibition of the rarely seen works of Hilton Head-based artist Aldwyth. The public is invited to the opening Guest Curator Mark Sloan, former director of the Halsey Institute of Contemporary Art in Charleston, will conduct a tour of the exhibition before the reception at 4 pm. "This is Not: Aldwyth in Retrospect" spans nearly 70 years of her work, including early examples of photography, painting, and fiber, as well as her later bricolages and epic-scaled collages that resemble medieval manuscript pages. **Ongoing** - Featuring a butterfly sculpture by South Carolina artist Eric Moore; work by sculptor John Van Alstine; and murals by Italian artist Hitnes. Admission: FREE. Hours: Mon.-Sat., 9am-4:30pm & Sun., 11am-3pm. Contact: 843/689-6767 or at (www.coastaldiscovery.org).

Lake City

Acline Studios, 132 North Acline Street, Lake City. **Ongoing** - Featuring the working studios of: Ada Smolen-Morton, Ashley Hamilton, Colleen Critcher, Daniela Arenas, Douglas Gray, Elizabeth Borowsky, Jan Chenoweth, Kara Artman, Latoya Thompson, Malik Hayward, Morgan Elvington Walker, Princess Chandler, Roger Halligan, Sasha Federer, and Tiffany Thomas. Hours: Tue.-Sat., 11am-5pm. Contact: 843/374-0180.

Crossroads Gallery, 124 West Main Street, Lake City. **Ongoing** - Featuring past winning entries from ArtFields competitions on a rotating basis. Hours: Tue.-Sat., 11am-5pm. Contact: (www.artfieldssc.org).

Lancaster

USC Lancaster Native American Studies Center, 119 South Main Street, Lancaster. **Five Points Gallery & North Gallery, Through Aug.**



Squirrel effigy by Catawba Nation artist Cheryl Sanders (1997) Thomas J. Blumer Collection

30 - "Soul of the South." Curated by the Morris Center for Lowcountry Heritage, "Soul of the South" takes visitors on a musical journey highlighting the influences that Native Americans, enslaved Africans, and the European colonizers in the Lowcountry had on various genres of music: gospel, jazz, blues, musical theater and rock and roll. Largely sponsored by Gretsche, the renowned drum and musical instrument maker, the exhibit also showcases local musicians and groups whose notoriety reached beyond the Lowcountry. **Red Rose Gallery, Through May 3** - "What the Fire May Gift," featuring artwork by USCL's 2023 Artist-in-Resident William "Bill" Harris, a Catawba potter and former Catawba Nation Chief. The exhibit features over 30 pieces of pottery, some created during Harris's term as the Center's 2023 Artist-in-Residence last fall, where he appeared courtesy of a 2024 South Carolina Arts Commission Folklife and Traditional Arts Grant. The exhibit also contains work from Harris' proteges Elizabeth Harris and Kent Harris, whom Harris works with as part of the group Blue Herron Clay, as well as work from his grandmother, Georgia Harris, a prolific potter who taught her grandson the traditional artform. **Duke Energy Gallery, Through Aug. 5, 2026** - "Clay and Play!" After four years of planning and preparing, the Native American Studies Center is pleased to open its first-ever exhibit geared just for elementary-aged children. The exhibition is an educational children's exhibit designed with immersive play in mind, including colorful displays and wall murals, hands-on pottery replica displays, an interactive Three Sisters Garden where guests can "pick" corn, beans, and squash, and more. Center Special Projects Coordinator Elisabeth Avelar developed the exhibit, wanting to not only create a kid-friendly exhibit, but also to create an exhibit correlating to South Carolina's educational standards in history and covering the educational disciplines of STEAM (Science, Technology, Engineering, Art, and Mathematics) and literacy. **D. Lindsay Pettus Gallery, Ongoing** - "The Story of Catawba Pottery". This National Endowment for the Arts funded exhibit traces the art, culture and history of Catawba pottery, the oldest Native American pottery tradition in the United States. **Back Gallery, Semi-permanent Exhibit** - "This is Us: Native American Studies". This exhibit celebrates the history and 10th Anniversary of USCL's Native American Studies, including artifacts and artwork from Collections, and a history of the building our Native American Studies Center calls home. **Ongoing** - The Center is 15,000 square foot facility in historic downtown Lancaster. Guests will have the opportunity to tour the NAS Center's gallery spaces, archives, classrooms, and archaeology, language, and audio-visual labs. Home to the world's largest collection of Catawba Indian pottery, the NAS Center will offer exhibits of regional Native American Art, classes and programs focused on Native American history, culture, archaeology, folklore, and language. Hours: Tue., Wed., Fri., & Sat., 10am-5pm; Thur., 10am-7pm; by appt. Closed Mon.&Sun. To make an appointment for visitation, call the Native American Studies Center at 803/313-7172 or e-mail to (usclnasp@mailbox.sc.edu). Contact: 803/313-7172 or visit (<http://usclancaster.sc.edu/NAS/>).

Laurens

The Artist's Coop, 111 W. Laurens Street., on the Historic Downtown Square., Laurens. **Ongoing** - Featuring works by over 50 cooperative members, including paintings, jewelry, pottery and weavings. Also art classes for children and adults. Hours: Tue.-Fri., 10am-5:30pm & Sat., 10am-2pm. Contact: 864/984-9359.

Marion

Marion County Museum, 101 Wilcox Avenue, Marion. **Ongoing** - Changing exhibits are displayed in two galleries downstairs. These can be local exhibits, or traveling exhibits from the South Carolina State Museum's collections. The Magnolia Room of the museum is furnished with lovely antiques once used in the Aiken-Rhett House in Charleston. These pieces were a gift from the Charleston Museum. The upstairs gal-

eries feature a turn-of-the-century classroom, a farm room, and a variety of displays concerning the people and places of Marion County. Hours: Tues.-Fri., 9am-noon & 1-5pm. Contact: 843/423-8299 or at (<http://www.marionsc.org/museum>).

McClellanville

McClellanville Arts Council Gallery, McClellanville Arts Center, 733 Pinckney Street, McClellanville. **Ongoing** - Featuring a selection of artworks by area artists. Hours: Wed.-Sat., 11am-3pm or by appt. Contact: 843/887-3157 or at (www.mcclellanvilleartsCouncil.com).

McCormick

The MACK, McCormick Arts Council Gallery, 115 Main Street, located in the historic Keturah Hotel, McCormick. **Ongoing, The Artisans Gallery Shop at the MACK** - Featuring works of over 30 artisans including paintings, pottery, jewelry, jacks, gourds, woodworking, textiles, soaps and more. Hours: Mon.-Sat., 10am-4pm. Contact: 864/852-3216 or at (<http://mccormickarts.org/>).

Moncks Corner

Berkeley County Museum and Heritage Center, 950 Stony Landing Road, Moncks Corner. **Ongoing** - Located within the Old Santee Canal Park, the Berkeley County Museum tells the 12,000-year-old story of the region. Exhibits and artifacts focus on the American Revolution, Native Americans, early medicine, rural electrification, and the Francis Marion National Forest. Gifts, book, prints, jewelry, and other items available in the gift shop. Admission: the museum is free, but there is a parking fee for the park. Hours: Mon.-Wed., 9am-4pm; Fri & Sat., 9am-4pm; and Sun., 1-4pm. Contact: 843/899-5101 or e-mail at (info@berkeleymuseum.org).

Mount Pleasant

Sweetgrass Cultural Arts Pavilion, Mount Pleasant Memorial Waterfront Park, 99 Harry M. Hallman, Jr. Blvd., under the bridge, Mount Pleasant. **Ongoing** - The pavilion is a tribute to the generations of men and women who have carried on this African tradition for more than three centuries. Kiosks and panels tell the history of this unique craft, and the open-air facility provides a venue for local basketmakers to display and sell their wares. Hours: daily, 9am-5pm. Contact: 800/774-0006 or at (www.townofmountpleasant.com).

Myrtle Beach / Grand Strand

Franklin G. Burroughs • Simeon B. Chapin Art Museum, 3100 South Ocean Blvd., beside Springmaid Beach, Myrtle Beach. **Through May 18** - "Mary Edna Fraser I Awakening". Artists find inspiration in many places. For artist and environmental activist Mary Edna Fraser, it's the bird's-eye views of North and South Carolina coastlines and waterways seen from her grandfather's vintage 1946 Ercoupe plane. This is an exhibition of her awe-inspiring images of these views in batiks and oils. Fraser's half a century of producing batiks on silk (an ancient process using wax and dye on cloth), oil paintings, short documentaries, exhibitions and events have had a single aim: to overcome apathy and educate her viewers about our fragile environment. With her stunning batiks installed to look like draped silk sculptures, as well as both large and intimate-sized oils, the artist seeks to inspire an awe of and a protective affection toward the planet. **Ongoing** - Myrtle Beach's Franklin G. Burroughs-Simeon B. Chapin Art Museum strives to be one of the finest visual arts museums in the Carolinas. With 11 galleries that change throughout the year, Myrtle Beach's only art museum offers exhibitions featuring paintings, textiles, sculpture, photography, video, ceramics, assemblage, collage and more. A visit to the Art Museum's exhibitions can be enhanced by its lively programming, including artist receptions, tours, lectures, workshops and classes for both adults and children. Hours: Tue.-Sat., 10am-4pm & Sun., 1-4pm. Contact: 843/238-2510 or at (www.myrtlebeachartmuseum.org).

Seacoast Artists Gallery, located at The Market Common, 3032 Nevers Street, Myrtle Beach. **Ongoing** - features the works of over 70 local artists of the Seacoast Artists Guild of South Carolina, a nonprofit visual arts organization dedicated to advancing excellence in the visual arts through teaching, exhibits, workshops and special events. Guild membership benefits include monthly meetings, programs & presentations; and opportunities to participate in Spring & Fall Art Shows and Web Gallery. Artwork includes oil, acrylic, watercolor, fiber art, mixed media, clay, metal engraved jewelry, sculpture, assemblage, and fine art photography. Art classes and workshops offered. Hours: Mon.-Sat., 10am-6pm and Sun., noon-6pm. Contact: 843.232.7009, e-mail at (seacoastartistsgallery@gmail.com) or at (seacoastartistsguild.com).

continued on Page 37