

Woolworth Walk in Asheville

continued from Page 25

moving to Weaverville, NC, just north of Asheville, in 2013. Since she began to show her work professionally in 1999, her paintings have been displayed in numerous juried art shows throughout the country.

Ward has been honored to receive several awards for her paintings, including prizes for mixed media, watercolors, and oil paintings. Her paintings have been displayed at the Capitol Building in Atlanta, GA, and are included in the permanent collection at the Jacqueline Casey Hudgens Center for the Arts in Georgia.

Ward's artwork consists primarily of landscape paintings in both oil and watercolor inspired by her hikes and travels. She hopes to capture the atmosphere of the places she has experienced, and share it with the viewer. She also loves the challenge of creating surreal and fantasy scenes. Ward begins these by marbling on paper or canvas using oil paint or ink, and then lets her imagination take her where it will.

Over the years, Ward has worked in



Work by Clarissa Jan Ward

many different mediums, from printmaking, to clay, to stained glass, and has yet to find an art form she dislikes. Her current 'other' passion is quilting. She sells her original paintings at Woolworth Walk in Asheville, participates in the Weaverville Art Safari, and gladly accepts commissions.

For further information check our NC Commercial Gallery listings, call the gallery at 828/254-9234 or e-mail to (info@woolworthwalk.com).

Asheville Gallery of Art in Asheville, NC, Features Works by Jane Molinelli

Asheville Gallery of Art in Asheville, NC, will present *Black, White, and Shades of Gray*, featuring works by Jane Molinelli, on view from Mar. 1 - 31, 2018. A reception will be held on Mar. 2, from 5-8pm.

Known for expressive, colorful, non-objective paintings, Molinelli presents new works in a limited palette.

"The idea for the show came when a collector wanted a commission in black, white, and shades of gray," says Molinelli. "I hadn't consciously worked in that way and was excited about the challenge." She found it to be an incredibly rich world. She mixed her own blacks, rather than grab the standard tube of carbon or ivory black. "When I grayed the colors with white, I got a whole range of beautiful shades."

As she painted, Molinelli focused on the expression and rhythm of the pieces. "It gave me time to reassess my values, in both an artistic and life sense, as I got to the core of the emotion I was hoping to convey." The artist believes non-objective art is a spectrum of dialogue. "I start the dialogue by responding to the energy of the marks, lines, and colors I lay on the surface. I hope those who see my work start their own dialogues with the pieces and remain open to what each says during the encounter."

Molinelli settled in Asheville after



Work by Jane Molinelli

attending Penland School of Crafts where she studied weaving. "I spent years as a craft book editor, but realized my heart belonged back with the visual arts. Once I started painting, I knew I was truly home." Molinelli lives in Asheville with her husband, Jim LaFerla. Her work is found both in private collections and corporate settings and can be found at Asheville Gallery of Art in downtown Asheville and at 310 ART in the River Arts District.

Molinelli's work, as well as the paintings of the other 30 gallery members will be on display and for sale through the month of March.

For further information check our NC Institutional Gallery listings, call the gallery at 828/251-5796, visit (www.ashevillegallery-of-art.com), or go to the gallery Facebook page.

Haywood County Arts Council in Waynesville, NC, Offers a Group Exhibit

The Haywood County Arts Council (HCAC) in Waynesville, NC, is excited to announce that the *Watercolor & Wax* exhibit opens Mar. 2 and will run through Apr. 28, 2018, on view in the HCAC Gallery & Gifts. The exhibit features works by eight wonderful local artists including Barbara Brook, Melba Cooper, Mary Decker, Joan Doyle, Jo Ridge Kelley, Chelsea Summers, Ann Vasilik and Maureen Simon.

The exhibit will include two and three-dimensional works of art. The juxtaposition of these two very different mediums

will capture viewer imaginations in multiple ways, with works ranging from the ethereal to the corporeal. Gallery visitors are in for a treat.

Leigh Forrester, HCAC Interim Executive Director explains, "Like all of our exhibits, this one will feature several of our most talented local artists but this show promises a great deal of variety in style and content as well. You won't want to miss this exhibit."

For further information check our NC Institutional Gallery listings or visit (www.HaywoodArts.org).

31st North Carolina Pottery Conference Takes Place in Asheboro, NC - Mar. 2 - 4, 2018

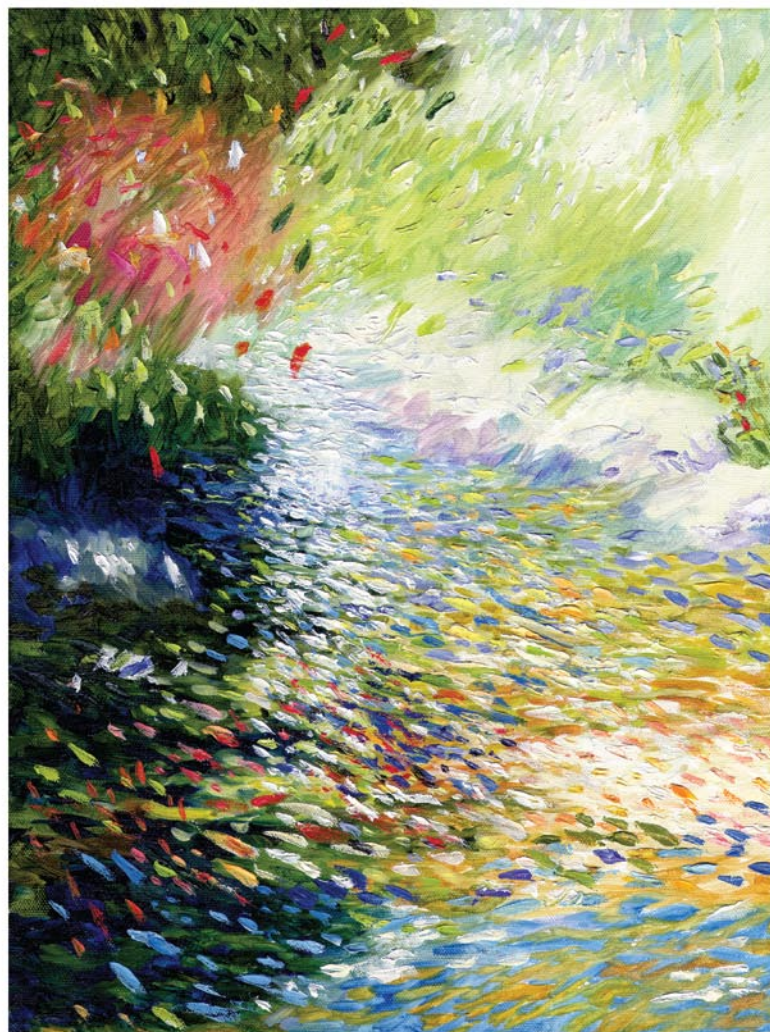
The 31st North Carolina Potters Conference, taking place, Mar. 2 - 4, 2018, in Asheboro, NC, is a premier ceramics conference. Through its history the conference has featured some of the best ceramics artists from around the world.

This conference centers on simultaneous demonstrations cultivating a dialogue of techniques, concepts, and experiences between the artists and the audience.

Unlike other conferences, you do not

continued on Page 27

kosinskistudio.com



"Shimmering Waters in Appalachia" - 12" x 16" oil on canvas

Deep in the Lost Province of Ashe County, NC
Studio visits by appointment, online anytime
Google "Kosinski Studio" for directions
336-384-1145



THERE'S A FINE LINE BETWEEN PRICELESS AND WORTHLESS.



Artist Diane Falkenhagen's Texas studio — destroyed by flooding during Hurricane Ike, 2008

What would you do if you lost your work, your tools, your images, and a lot more to a flood? Metalsmith Diane Falkenhagen knows what five feet of contaminated saltwater can do to a jewelry studio. CERF+ can help you learn how to protect your career from crossing that fine line.

Cerf+
THE ARTISTS'
SAFETY NET

CraftEmergency.org + StudioProtector.org