

Davidson College, in Davidson, NC, Features Works by Allan deSouza and Alia Syed

Davidson College, in Davidson, NC, is presenting *Allan deSouza and Alia Syed: Contents Under Pressure*, on view in the Van Every Gallery, through April 10, 2016. A reception will be held on Mar. 10, beginning at 5pm in the Belk Visual Art Center.

Allan deSouza is a multimedia artist whose work investigates the themes of travel, diaspora, and migration and their role in forming the racial and sexual identity of the body in a social and psychological context. *The World Series* (2011), comprised of sixty photographs, was inspired by Jacob Lawrence's iconic *The Migration Series* (1941). The project invokes metaphorical, trans-cultural, political, and psychogeographical encounters; not only of the artist's own experience, but also in broader themes related to international migration. The installation at the Van Every Gallery contributes to a growing narrative about those inhabiting many locations and psyches in a political, humorous, and poetic language.

deSouza was born in Kenya, and has since lived primarily in London, New York, Los Angeles and San Francisco. He is now based in the East Bay, where he is the Chair of the Department of Art Practice at UC Berkeley. deSouza works across different disciplines, including photography, text, performance, and pedagogy.



Alia Syed, *Panopticon Letters: Missive I*, Still from 16mm film and high definition video transferred to high definition video, sound, 22 minutes 46 seconds, 2010-2013, Courtesy of the Artist and Talwar Gallery, New York | New Delhi

Thames. It uses Jeremy Bentham's idea of the 'panopticon' prison of 1787.

A panopticon prison features one central point of surveillance, where the warden sits, in the middle of a ring of prisoner cells. From this vantage point, the warden is given a heightened sense of control over the prisoners. In Syed's film, *Panopticon Letters: Missive I*, the Thames is juxtaposed with different images of false skies and backgrounds to create a feeling of dissonance within the projected notion of harmony between water and sky. Accompanying the excerpt of Bentham's text is the artist's own short text, *Haunting I*, as well as male and female voices reciting *Psalm 139 in Hebrew and Jacobean English*, respectively.

On a Wing and a Prayer, Syed's newest film, will premiere at the Van Every/Smith Galleries. The work explores the physical and emotional feats of migrants, and was inspired by the August 2015 arrest of Abdul Rahman Haroun, a Sudanese man seeking asylum who walked 50 kilometers through the Channel Tunnel from France to England. Haroun was arrested for obstructing a railway under an outdated 19th century law. After months in prison, he was granted asylum by the UK in January 2016.

Born in Swansea, Wales, Syed lives between London and Glasgow. She received her BFA from University of East London in 1987 and a Postgraduate degree in Mixed Media from Slade School of Fine Arts in 1992. Her films have been shown at numerous institutions such as BBC Arts Online; The Triangle Space; Chelsea College of Arts; Los Angeles County Museum of Art; *5th Moscow Biennale*; Museum of Modern Art, New York; Museo Nacional Centro de Arte Reina Sofia, Madrid; *XV Sydney Biennale*; Hayward Gallery, London; Tate Britain, London; Glasgow Museum of Modern Art, Scotland; Iniva, The New Art Gallery in Walsall; and Tate Modern, London. Syed is represented by Talwar Gallery, NY, and New Delhi.

A small publication will be available featuring an essay by Alice Correia, professor at University of Salford, UK. This exhibition is a collaboration with Talwar Gallery, New York and New Delhi, and Deepak Talwar, Davidson College Class of 1988, and was made possible through the generous support of Malú Alvarez, Davidson College Class of 2002.

The gallery is located on N. Main Street in the Belk Visual Art Center. Free parking is located behind the Katherine and Tom Belk Visual Art Center off Jackson Street.

For further information check our NC Institutional Gallery listings, call the gallery at 704/894-2519 or visit (www.davidson-collegeartgalleries.org).



Allan deSouza, *Future*, Color Photograph, 12" x 16", from *The World Series*, 2010-2011, Courtesy of the Artist and Talwar Gallery, New York | New Delhi

His works have been shown extensively in the US and internationally, including at SF Camerawork; the Phillips Collection, Washington, DC; the International Center for Photography, NY; Pompidou Centre, Paris, France; Gwangju Biennale, Korea; Guangzhou Triennale, China. His current book-length projects include *How Art Can Be Thought*, an examination of art pedagogy and a lexicon of terms used within the art critique; and *Ark of Martyrs*, a rhyming "rewrite" and accompanying video installations of Joseph Conrad's *Heart of Darkness*. His writings have been published in various journals, anthologies, and catalogues, including *Third Text*, London, the online *Art Practical* and *Shifter Journal*, NY. He is represented by Talwar Gallery, NY, and New Delhi.

Alia Syed is a British filmmaker and artist whose work integrates her interest in storytelling, history, and visual narrative. Her work, including the two that are being presented at Davidson College, *Panopticon Letters: Missive I* and *On a Wing and a Prayer*, examine notions of cultural difference and gender in relation to diaspora and location. *Panopticon Letters: Missive I* investigates her belief in "contesting the philosophy of sight as the primary means of comprehending the world" through the dissonance of both sound and images of the

Gallery 27 in Lincolnton, NC, Offers Works by Emily Andress and Jonathan Grauel

Gallery 27 in Lincolnton, NC, is presenting *Figures in Villages: A Tale to Tell*, featuring works by Charlotte, NC, artists Emily Andress and Jonathan Grauel, on view through Mar. 9, 2016.

The exhibition will emphasize Andress and Grauel's groundbreaking 3-dimensional and iPad paintings which are the result of a finely tuned mixture of their styles and techniques highlighting the tale of their artistic journey together. These works combine rich, colorful environmental imagery with

iconic historical and modern day figures created in a dynamic, fluid style. *Figures in Villages* is the third offering of Gallery 27's 2016 Visiting Artists Series.

Emily Andress' 35 year career as an artist has allowed her to develop a distinct portrait style. While known as a skilled print-maker in the US and UK for over 20 years, she made the decision to transition her unique vision to oil painting.

"I am drawn to painting portraits, but the

continued above on next column to the right

kind of portraits that give the viewer a sense of who the person is/was as opposed to simply how they look... I have found myself inspired by the fauvists and German expressionists. It took several years to develop a style that I felt ready to show; a style that would be as recognizable as my printmaking had been. I use the line work that was prevalent in my printmaking as an underpainting in my new work. It gives the sense of movement and a frantic burst of energy underneath, peeking through the oils..."

Jonathan Grauel's life has been shaped by his need to create. He transforms that need into unique visual narratives. He uses line, shape, and color to construct surreal spaces for the eye to journey. Focusing on the places "man" travel, Grauel portrays not just physical locations, like the coffee shops and restaurants he frequents, but also mental, emotional, and spiritual places. His work is a response to his surroundings and the relationships they contain.

Grauel participates in numerous gallery events, one man shows, and group exhibits. His paintings have received multiple awards. In addition, Grauel taught high school art, so has a keen interest in arts education. He has been a guest speaker in the classroom upon many occasions. For many years, Grauel's primary mediums were acrylics, oils and oil pastels. An accident with a table saw in 2008, left him without an index finger on his dominant hand. After the accident his wife and friends surprised him with an iPhone. He soon discovered a new joy in "finger painting." Grauel added an



Work by Emily Andress

iPad to his artist toolbox and it has replaced his sketchbook as a constant companion. He enjoys the freedom of the digital medium and also continues to work with traditional media.

Gallery 27 is the premiere art gallery in Lincoln County, bringing the finest in both local and regional art to the area for the past three years. The mission of Gallery 27 is to instruct, inform and inspire our artists and collectors by providing a source of high quality of visual art, create an exciting venue where artists can exhibit and sell their art, facilitate opportunities for artists through marketing, promotion, commissions, and sales, provide high-quality classes and workshops for adults and children in a barrier-free setting that is designed to inspire while providing fun and educational art experiences for all ages and abilities.

For more info check our NC Commercial Gallery listings, call the gallery at 704/240-9060 or visit (www.ncgallery27.com).

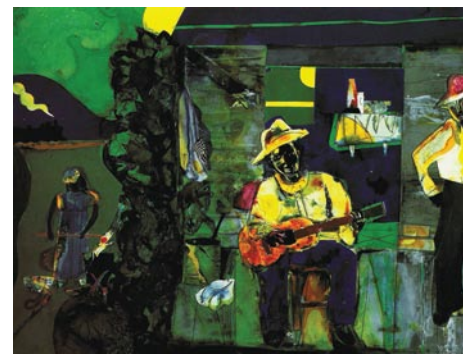
Hickory Museum of Art in Hickory, NC, Showcases Harlem Renaissance

The Harlem Renaissance of the 1920s was a time of racial pride in music, literature and the visual arts. See works influenced by this important movement in the exhibition *Tribute to the Harlem Renaissance: Works from the Permanent Collection* in the Windows Gallery of the Hickory Museum of Art in Hickory, NC, on view through May 29, 2016.

Featured are North Carolina artists Romare Bearden, Elizabeth Catlett, Juie Rattley III, and Claude Howell, as well as Jacob Lawrence, Sharif Bey, Kara Walker, Micheal Cunningham, Frank Stanley Herling, A.B. Jackson and Lorenzo Scott.

Bearden was born in Charlotte, NC, and grew up in the Harlem section of New York City. Bearden's mother, who was an editor and political organizer, entertained key figures from the Harlem Renaissance, a creative ferment of writers, musicians, artists, and intellectuals. Bearden spent time at Prohibition night clubs and the jazz scene, while earning a mathematics degree from New York University.

Bearden also spent many summers in Mecklenburg County, where his grandfa-



"Evening Limited to Memphis", by Romare Bearden, 1987, paint and paper collage on board, HMA purchase partially funded by Carolina Mills and friends, 1989.5

ther was a preacher. There, rural southern cabins and fields, community rituals, and strong women captured his imagination. See Bearden's works at Hickory Museum of Art, including his paint and paper collage *Evening Limited to Memphis* and etching *The Family*.

For further information check our NC Institutional Gallery listings, call the Museum at 828/327-8576 or visit (www.HickoryArt.org).

Gallery 27 in Lincolnton, NC, Offers Works by Jonathan Pellitteri

Gallery 27 in Lincolnton, NC, will present *Engineered Landscapes: Sculpture by Jonathan Pellitteri*, on view from Mar. 12 - 23, 2016, A reception will be held on Mar. 12, from 7-9pm.

For thousands of years the human race has tapped natural resources for the construction and sustenance of civilization. This history has left indelible marks on the landscape. Simultaneously the challenges presented by nature have played their part in shaping societies, and technology. Industrial structures, scientific devices, and fantastical landscapes coalesce in Pellitteri's sculptures to create objects that stimulate curiosity. Rather than illustrating clear causes and effects, these works are intended for the viewer to form personal narratives and individual conclusions.

Pellitteri invites viewers to explore humanity's impact on the environment, and the natural world's impact on human innovation in his latest exhibition entitled *Engineered Landscapes*. His works are highly sought after by municipalities, museums, university galleries and collectors. This is Pellitteri's premiere showing



Work by Jonathan Pellitteri

at Gallery 27 and the first time the gallery has had a show centered entirely around sculpture. We are so pleased to have an artist of his caliber and reputation as part of our 2016 Visiting Artists Series.

continued on Page 17