

# NC Commercial Galleries

continued from Page 49

## Micaville

**Crabtree Creek Art and Floral Gallery**, 4161 E. Hwy 19-E, between Burnsville & Spruce Pine, in Micaville. **Ongoing** - A 2,400 sq. ft. gallery offering pottery, blown glass, paintings, stained glass, wood carvings and bowls, jewelry, handmade handbags, sweaters & hats, Christmas trees, ornaments and holiday decorations, metal sculptures and ironwork, handmade soaps and lotions, fragrances and candles, wildlife & floral photography, home accessories, lamps, handmade tables, chairs and home accents, silk floral creations and fresh floral arrangements, textile pieces, handmade baskets and local crafts from the western North Carolina region. Also a complete garden center with blooming plants, hanging baskets, dish and herb gardens is located on property including landscape art, hardscape and fountains. Hours: Tue.-Sat., 10am-5pm. Contact: 828/675-0612 or at ([www.crabtreecreekgallery.com](http://www.crabtreecreekgallery.com)).

## Mooresville

**Andre Christine Gallery & Sculpture Garden**, 148 Ervin Road, (on the right above Lone Star Steak House), Mooresville. **Ongoing** - Featuring works by jewelry designers Dawn Vertrees, Margie & Frank Gravina, and Janet Burgess; bronze sculptures by Armand Gilanyi and wood sculptures by Robert Winkler. Plus works by on going sculptor in residence Dana Gingras and sculptor Michael Alfano. Hours: Tue.-Sat., 10am-5pm & Sun. by appt. Contact: 704/664-1164 or visit ([www.AndreChristineGallery.com](http://www.AndreChristineGallery.com)).

## Morehead City

**BluSail Gallery**, Artists' School & Pottery Studio, 903 Arendell Street, downtown art district, Morehead City. **Ongoing** - The gallery represents and exhibits work by over 30 local artists. The Artists' School and Pottery Studio are working studios designed to educate and enhance local talent for children and adults of all ages and all levels of experience. Hours: Mon.-Sat., 10am-5:30 or by chance. Contact: 252/723-9516 or at ([www.blu-sail.com](http://www.blu-sail.com)).

**Budding Artists, Ltd.**, 3000 Arendell Street, Unit 9, Morehead City. **Ongoing** - The gallery provides custom framing and artist liaisons for commissioned pieces. Hours: Mon.-Sat., 10am-6pm. Contact: 252/247-5111.

**Carteret Contemporary Art**, 1106 Arendell St., Morehead City. **Ongoing** - Featuring original paintings and sculpture from regional and national artists, and shows with gallery artists during spring and summer. Hours: Mon.-Fri., 10am-5pm and Sat., 10am-4pm. Contact 252/726-4071 or at ([www.twogalleries.net](http://www.twogalleries.net)).

## Morganton

**Hamilton Williams Gallery**, 403 East Union St., downtown Morganton. **Ongoing** - A gallery of fine craft featuring the pottery, jewelry, metal, fiber, and art of artists from Western North Carolina and the Appalachian region, adjoining the production studio of resident potter, Hamilton Williams. Hours: Mon.-Fri., 10am-6pm & Sat., 10am-5pm. Contact 828/438-1595 or at ([www.hamiltonwilliams.com](http://www.hamiltonwilliams.com)).

## Nags Head

**Seaside Art Gallery**, 2716 Virginia Dare Trail South, Nags Head. **Ongoing** - Featuring works of local and contemporary artists, as well as a wonderful selection of art by such masters as Picasso, Chagall, Whistler, Icart, Renoir and many others. Sculpture, porcelain and art glass by Hummel, Staffordshire, Tiffany and others are represented. As well as a fine selection of estate jewelry. Since the early 1980's, a major feature of Seaside Art Gallery has been our large collection of original animation art by such studios as Disney, Warner Bros., Hanna-Barbera, United Features Ltd., and other animation studios. Hours: Mon.-Sat., 10am-5pm. Contact: 252/441-5418, 1-800/828-2444 or at (<http://www.seasideart.com/>).

## New Bern

**Carolina Creations Fine Art and Contemporary Craft Gallery**, 317-A Pollock Street, New Bern. **Mar. 1 - Apr. 30** - "Garden Art Show," featuring paintings and garden art - including work by Steve Fabrico (birdhouses and feeders), Gail Chavenelle (metal garden sculpture), Bradley Cross (copper spinners), paintings by Brenda Behr, Donna Robertson, Sally Sutton, and other gallery artists. **Ongoing** - Featuring fine art and contemporary crafts including pottery, paintings, glass, sculpture, and wood by over 300 of the countries top artists. Hours:

Mon.-Sat., 10am-6pm; Fri., till 8pm; & Sun. 11am-4pm. Contact: 252/633-4369 or at ([www.carolinacreations.com](http://www.carolinacreations.com)).



Work by Susan B. Hecht

**Fine Art at Baxters Gallery**, located in Studio 323, "Home of Working Artisans" (formally the historic Baxter's Jewelry Store), 323 Pollock Street, New Bern. **Mar. 13 - Apr. 30** - Featuring an exhibit of works by painter Susan B. Hecht. A reception will be held on Mar. 13, from 5-8pm. Although Hecht started her career in advertising and graphic design, she eventually found her way into the fine art world. She works in a variety of media, but mostly concentrates on oils. **Ongoing** - A fine art gallery dedicated to promoting regional and national artists; bringing awareness and appreciation of fine art to the community through exhibits, shows, demonstrations and by providing fine art to established and new art lovers. We offer a diverse selection of styles, subject matter and mediums including paintings, pottery, ceramics, sculpture, photography, and jewelry. Hours: Mon.-Fri. 10am-6pm & Sat., 10am-5pm. Contact: 252/634-9002 or at ([www.fineartatbaxters.com](http://www.fineartatbaxters.com)).

**The Art Gallery @ Le Bistro & Fine Dining**, 3402-B Trent Road, New Bern. **Ongoing** - Featuring works by local artists who explore a wide range of media including Gayle George, Nell Maha, John Dreas, Nada Behr, Doris Walker, Barbara Cornish, B. Chris Munyan, Douglas Rowe, Tess Luper, James King, William K. Henson, John Mitchell, Joan Russell, Betty Brown, Blain Kruger and Dan Wilson. Come in for lunch or dinner, have a glass of wine and peruse the work of these fine artists. Hours: Tue.-Wed., 10am-5pm; Thur.-Sat., 10am-8pm; and Sun., 9am-2pm. Contact: 252/637-7331 or at (<http://www.lebistrofinediningandtheartgallery.com>).

## Ocracoke Island

**Village Craftsmen**, 170 Howard Street, Ocracoke Island. **Ongoing** - We feature pottery, glass, jewelry, kitchen items, musical instruments, wrought iron, baskets, bells, boxes, soaps, accessories, clothes, games, kaleidoscopes, lawn sprinklers, lamps & lampshades, prints, tin ware, pewter items, tiles and much more - all made by American artists. Hours: Mon.-Sat., 10am-4pm & Sun., 10am-2pm. Contact: 252-928-5541 or at ([www.villagecraftsmen.com](http://www.villagecraftsmen.com)).

## Old Fort

**Turtle Island Pottery**, 2782 Bat Cave Road, Old Fort. **Ongoing** - Featuring handmade pottery by Maggie and Freeman Jones, who create one of a kind, functional, decorative stone-ware items. From cups to umbrella stands, mirror frames and clocks. Sculptural and inspired by nature, many forms are reminiscent of antique pottery from the arts and crafts movement and art nouveau styles. Hours: Showroom open most Saturdays, call ahead for any day of the week. Contact: 828/669-2713 or at ([www.Turtleislandpottery.com](http://www.Turtleislandpottery.com)).

## Pinehurst - Southern Pines Area

**Artist Alley**, 167 E. New Hampshire Ave., Southern Pines. **Ongoing** - Featuring a wide variety of affordable artwork and fine crafts made exclusively here in North Carolina. Hours: Mon.-Sat., 11am-5pm. Contact: 910/692-6077.

**Broadhurst Gallery**, 2212 Midland Rd., Pinehurst. **Ongoing** - Featuring works by regional, national and international artists. Hours: Tue.-Fri., 11am-5pm & Sat., 1-4pm. Contact: 910/295-4817 or at ([www.broadhurstgallery.com](http://www.broadhurstgallery.com)).

**Hollyhocks Art Gallery**, 905 Linden Rd., one mile from Pinehurst next to Elliott's restaurant, Pinehurst. **Ongoing** - Featuring original work by award winning local artists Jane Casnelie, Diane Kraudelt, Irene McFarland, Paula Montgomery, and Robert Gera. Offering a wide range of work from contemporary to traditional, the gallery includes portraiture, vibrant Tuscan scenes, palpable pet portraits, beautiful florals and more, in a wide variety of mediums including oils, acrylics, pastels and unusual black and white washes. Hours: Mon.-Sat., 10am-9:30pm. Contact: 910/255-0665 or at ([www.HollyhockArtGallery.com](http://www.HollyhockArtGallery.com)).

**Midland Crafters**, 2220 Midland Rd., Pinehurst. **Ongoing** - Featuring the finest in American traditional and contemporary hand crafts. The gallery carries something for everyone. Hours: Mon.-Sat., 9:30am-5:30pm & Sun., 2-5pm. Contact: 910/295-6156.

## Pittsboro

**Liquidambar Gallery**, 80 Hillsborough Street, Pittsboro. **Ongoing** - We represent over 75 different artists in the retail store and both, Kitty and John the store owners, are artists as well. We carry handmade, one-of-a-kind artwork - everything from local pottery, jewelry, steel, glass, baskets, cards, fine art, and hand turned-wood items. In the front gallery we have new featured artists, with a reception on First Sundays, 2-4pm. Hours: Wed.-Sat., 10:30am-5:30pm and Sun., noon-4pm. Contact: 919/542-1773 or at ([www.liquidambarstudio.com](http://www.liquidambarstudio.com)).

**The Joyful Jewel**, 44-A Hillsborough2 Street, Pittsboro. **Ongoing** - Featuring local art fresh from the Heart. Mariah Wheeler is shoppe keeper at this gallery/gift store in downtown Pittsboro. We feature exquisite art and gifts from over ninety local artists, with a price range to suit your budget. You will find baskets, books, jewelry, cards, paintings, photography, sculpture, from glass, wood, clay, fiber, and more. On Fri. evenings the gallery features local musicians, poets, and other performance art with a wide array of talent. Hours: Mon.-Sat., 10:30am-5:30pm & Sun., noon-4pm. Contact: 919/883-2775 or at ([www.joyfuljewel.com](http://www.joyfuljewel.com)).

## Raleigh Area

**Adam Cave Fine Art**, 115 1/2 East Hargett St., half a block from Moore Square, Raleigh. **Ongoing** - Representing a select group of regional and nationally known artists, including Joseph Cave, David Hewson, Stephen Aubuchon, Wayne Taylor, and Donald Furst. The gallery will also be introducing some new, young talent to the area, including Massachusetts painter Jennifer O'Connell. Hours: Tue.-Sat., 11am-5pm & by appt. Contact: 919/272-5958 or at ([www.adamcavefineart.com](http://www.adamcavefineart.com)).

**Artcraft Gallery**, 406 W Hillsborough Street, Raleigh. **Ongoing** - Funky, functional and fine art by several co-op artists. Hours: Mon.-Thur., 9am-5pm; Fri., 9am-1pm & 1st Fri., 6pm-midnight. Contact: 919/832-5058 or at ([www.artcraftsignco.com](http://www.artcraftsignco.com)).



Work by Angela Nesbit

**ArtSource Fine Art & Framing**, 4351 The Circle at North Hills Street, Suite 107, Raleigh. **Mar. 1 - 30** - "Just Imagine," featuring works by Debbie Martin, Carolyn Goldsmith, Angela Nesbit, and Jeanne Bessette. These artists share a passion for expressing their inner feelings in their own creative means. **Ongoing** - ArtSource is a fine art gallery housing over 1,600 works of art by 65+ artists. This award-winning gallery has assisted collectors and businesses in the selection of fine art, custom art pieces and framing for over 20 years. Hours: Mon.-Sat., 10am-6pm. Contact: 919/787-9533, or at ([www.artsource-raleigh.com](http://www.artsource-raleigh.com)).

**Ashley's Art Gallery**, 701 N. Main St, located 12 miles south of Raleigh, Fuquay-Varina. **Ongoing** - Featuring fine art originals by national and local artist including Terry Isaac, Braldt Bralds and John Weiss and reproductions by Pino, Robert Bateman, Carl Benders, Bev Doolittle and William Mangum. Hours: Mon.-Thur., 11am-6pm & Fri.-Sat. 10:30am-5pm. Contact: 919/552-7533 ext.3 or at ([www.ashleyart.com](http://www.ashleyart.com)).

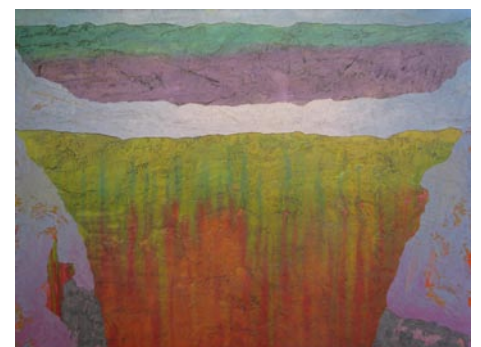
**Flanders Art Gallery**, 302 S. West Street, Raleigh. **Ongoing** - Featuring a fine art gallery dedicated to the promotion of national and international artists, providing fine art to established and new collectors, and catering to special events in support of fine art. We offer sculpture, painting, photography, illustrations, engravings, and other works on paper by emerging and established artists in a range of styles. Also offering art appraisal by an ISA educated appraiser and art consultation. Hours: Wed.-Sat., 11am-6pm. Contact: 919/834-5044 or at ([www.flandersartgallery.com](http://www.flandersartgallery.com)).

**Gallery A**, 1637 Glenwood Ave., Raleigh. **Through Mar. 31** - "Bust," featuring an exhibit of work by Corey Mason. Hours: Mon.-Thur., 10am-4pm or by appt. Contact: 919/546-9011.

**Gallery C**, 540 North Blount Street, Raleigh. **Through Mar. 25** - "The Fine Art of Japanese Woodblock Prints: 1795-2005". A reception will be held on Mar. 6, from 6-9pm. The exhibit presents an enticing group of original Japanese woodblock prints from an esteemed private collection. This exhibition encompasses two hundred years of Japanese printmaking and includes a variety of artists from old Japanese masters to modern new talent. The subjects vary greatly and include actors, warriors, landscapes, costumes, beautiful women and erotica. Hours: Tue.-Sat., noon-6pm; & Sun., 1-5pm. Contact: 919/828-3165 or at ([www.galleryc.net](http://www.galleryc.net)).

**Glenwood Gallery Art & Antiques**, 610 W. Johnson St., Raleigh. **Ongoing** - Featuring works by Edwin D. Alexander, Barbara Evans, Michael Manas, Nancee Clark, Michael Van Horn, Rob Cox, Jim Green, Stan Strikland, Mark Tomczyk. Hours: Call. Contact: 919/829-7202.

**Grace Li Wang Art Gallery**, Millbrook Lake Center, 2411 - 112 E. Millbrook Rd., Raleigh. **Ongoing** - Featuring landscapes, figures, abstracts, Chinese art, still lifes, and nature scenes by Grace Li Wang and other artists. Hours: by appt. Contact: 919/8721-5800 or at ([www.graceliwang.com](http://www.graceliwang.com)).



Work by Herb Jackson

**Lee Hansley Gallery**, 225 Glenwood Ave., Raleigh. **Through Apr. 25** - Featuring an exhibit of works by Herb Jackson. Jackson, a native of Raleigh, retired four years ago from teaching art at Davidson College for 42 years. Jackson studied art at Davidson as an undergraduate and earned his MFA from the University of North Carolina at Chapel Hill. **Ongoing** - "NC Masters," featuring works by prominent deceased NC artists including George Bireline, Edith London, Francis Speight and Joe Cox. There are 35 artists in the gallery's stable whose works are shown on a rotating basis. The gallery also mounts invitational exhibitions in which non-gallery artists show alongside stable artists. The gallery organizes at least one historical exhibition annually exploring the work of a single artist or group of stylistically related artists. Hours: Tue.-Sat., 11am-6pm & 1st Fri. till 10pm. Contact: 919/828-7557 or at ([www.leehansleygallery.com](http://www.leehansleygallery.com)).

**Litmus Gallery & Studios**, 312 W. Cabarus Street, (across the tracks from Amtrak Train Station) Raleigh. **Mar. 6 - 27** - "All Souls Dream". A reception will be held on Mar. 6, from 6-9pm. People's dreams are from the subconscious mind but where are the dreams of a soul from? In this show Anthony Garcia-Copian painted the images of what a soul dreams. **Ongoing** - Regional emerging and/or established artists are featured every month with a reception from 6-9pm the first Friday of each month. Studios of resident artists are open for touring, viewing, and selling of art (paintings, sketches, sculptures, pottery, mixed media, photography, etc.). Hours: Fri., 10am-2pm or by appt. Contact: 919/571-3605 or at ([www.litmusgallery.com](http://www.litmusgallery.com)).

continued on Page 51