

NC Commercial Galleries

continued from Page 59

ible compositions that are a nod to another time, and a fantasy to be explored. **Ongoing** - Featuring works by regional and nationally recognized artists. We offer a wide variety of contemporary fine art and craft, including paintings, sculpture, ceramics, glass, fiber, jewelry and wood. Hours: Tue-Sat., 11am-6pm or by appt. Contact: 910/343-8997 or at (www.newelementsgallery.com).

Port City Pottery & Fine Crafts, at The Cotton Exchange, 307 North Front Street, Wilmington. **Ongoing** - Celebrating ten years in business, Port City Pottery & Fine Crafts, in the historic Cotton Exchange in downtown Wilmington, is the first gallery in Wilmington dedicated exclusively to local, handmade, one-of-a-kind, three-dimensional art and craft by jury-selected coastal North Carolina artisans. We present decorative and functional works in clay, fiber/textiles, gourds, baskets, jewelry, mixed media, glass and wood in a beautiful setting in this early 20th century historic building. Handmade objects, whether held, worn, or displayed, enrich our lives by connecting us with our humanity, creativity, and our history. It is evident when you enter Port City Pottery & Fine Crafts that all of the Gallery members are pursuing not only art but their passion. Hours: Mon-Sat., 10am-5:30pm & Sun. noon-4pm. Contact: 910/763-7111 or at (www.portcitypottery.com).

SALT Studio & The Gallery at SALT Studio, 805 N. 4th Street, inside the historic Modern Baking Building in the heart of the Brooklyn Arts District - enter through glass door under the building overhang, the gallery is at the end of the hallway Wilmington. **Ongoing** - The Gallery at SALT Studio is Wilmington NC's only fine art photography gallery. The gallery exhibits fine art photography by national, international, and local artists. The gallery strives to bring thought provoking, aesthetic, photo-based works of art to Wilmington. All of our exhibition openings are on the Fourth Friday Gallery Nights each month as administered by The Arts Council of Wilmington. SALT Studio is a photography studio that offers high caliber, personalized photographic services with a unique edge to Wilmington. Hours: Mon.-Fri., 10am-6pm and Sat., noon-5pm. Call prior to coming to make sure we are open and not on location shooting a job. Contact: 910/367-5720 or at (<http://SaltStudioNC.com>).

Sheffield Art Studio and Gallery, 802-A N. 4th Street, Brooklyn Arts District, Wilmington. **Ongoing** - Featuring original oil and watercolor paintings by Sarah Sheffield. Exhibits changing monthly. We stock my full line of mini gift boutique paintings as well. The shop will soon carry prints and note cards in 2017. Hours: Fourth Friday for the Wilmington Art Walk from 6-9pm or by appt. Contact: 919/815-2097 or e-mail at (sarah@sheffieldartstudio.com).

621N4th Gallery, 621 North 4th Street, Wilmington. **Ongoing** - The gallery is an artist-run gallery, studio and office space located in the heart of downtown Wilmington's Brooklyn neighborhood. The gallery location provides established and emerging artists the opportunity to exhibit and sell their work in a professional manner. Hours: Mon.-Thur., 1-5pm & 4th Friday, 6-9pm or by appt. Contact: 910/763-2012 or at (<http://621n4th.com/index.php>).

Spectrum Art & Jewelry, @ The Fourm, 1125-H Military Cutoff Rd., Wilmington. **Ongoing** - Featuring works by over 100 regionally and nationally renowned artists in a variety of media. Hours: Mon.-Sat., 10am-6pm. Contact: 910/256-2323 or at (www.spectrumartgallery.com).

The Art Factory, 21 Surry Street, Wilmington. **Ongoing** - We are located in the warehouse district on the edge of beautiful Historic Downtown Wilmington, North Carolina. In addition to our retail galleries, the Art Factory Gallery houses a number of studios for working artists and a Wine Bar featuring distinctive Yadkin Valley North Carolina wines, available by the glass while you enjoy the galleries. Hours: call about hours. Contact: 910/399-3793 or visit (<https://www.facebook.com/ArtFactoryGallery/>).

The ArtWorks, 200 Willard Street, Wilmington. **Also** - As a reminder, our Art Village is open for viewing and shopping every Fri., 11am-7pm and Sat., 11am-5pm. **Ongoing** - The ArtWorks is an art village providing art studios, gallery space, and an event venue; fostering a creative environment for artists, educational opportunities, and enhancement of the Wilmington community, through art. Our Mission is to enhance the community, assist the artist, contribute to the revitalization of downtown Wilmington, to preserve Wilmington's commercial landmarks,

and to increase the livelihood of local artists and provide a place to create and display all types of art. Hours: 2nd & 4th Saturdays, 10am-3 or by appt. Contact: 910/352-7077 or at (jim.knowles@theartworks.com).

The Golden Gallery, @ The Cotton Exchange, 307 N. front St., Wilmington. **Ongoing** - Featuring works by John W. Golden and Mary Ellen Golden. Hours: Mon.-Sat., 10am-5:30pm & Sun., 1-4pm. Contact: 910/762-4651 or at (www.thegoldengallery.com).

Three Hounds Gallery, 29 S. Front St., Wilmington. **Ongoing** - Featuring works by Wayne McDowell, Jeff Chase, Dick Roberts, Shawn Best, Kristin Gibson, Fritz Huber, Joanne Geisel, Christa Sylvester, Brian Evans, Mark Gordon, Rex Miller, and jewelry by Emily Parker. Hours: Tue.-Thur., 11:30am-5:30pm; Fri. and Sat., 11:30am-7:30pm & Sun., noon-3pm. Contact: 910/815-3330 or at (www.threehoundsgallery.com).

Alternative Art Spaces - Wilmington
First Floor of 216 N. Front Street, (the former Expo 216 building), Wilmington. Through Nov. 29 - "It's About Time," a POP-UP art show featuring works by Elizabeth Darrow, Virginia Wright-Frierson, and Friends, a project of Art in Bloom Gallery. Hours: Tue.-Sun., noon-5pm. Contact: 910/763-8341, 484/885-3037 or at (www.aibgallery.com).

Platypus & Gnome Restaurant, 9 South Front Street, Wilmington. **Through Feb. 3** - "Works of Art by Kirah Van Sickle," in partnership with Art in Bloom Gallery and Checker Cab productions. Hours: Sun., noon-10pm, Mon., 11am-11pm, closed Tue., Wed.-Sat., 11am-11pm. Contact: 910/769-9300.

Winston-Salem Area

Downtown Arts District, Sixth and Trade streets, Winston-Salem. **Feb. 7, 7-10pm** - "DADA First Friday Gallery Hop," with special artist demonstrations, art exhibits, and shops and studios open evening hours. Events are free and open to the public. Gallery Hops are funded and sponsored by the Downtown Art District Association, a non profit organization, and their supporting membership. Contact: 336/722-2345.

ArtConnections Gallery, 629 N Trade Street, Winston-Salem. **Ongoing** - We now have four resident artists, Cynthia Cukiernik, Audrey Lyng, Anne Murray, and Patty Pape. We also show 10 local consignment artists. Besides having two studio space stations, we have display areas for all kinds of local made art: acrylic, water color, and oil paintings, colored pencil drawings, photography, marbled and hand made papers, fun journals and fine art hand made books, jewelry, shawls, up-cycled tops, top extenders, aprons, pottery, bottle totes, and cards. We also offer classes, calligraphy services, and book repair. You can see where we got our name! We truly are art connections. Hours: Thur., Fri., Sat., 11am-6pm, & Sun. 1-6pm. Contact: 336/893-8839 or at (ArtConnectionsTrade.com).

Blessings, 823 Reynolda Road, Winston-Salem. **Ongoing** - Featuring works by Marsha Thrift, Christine McCormick and Sharon Grubbs. Their work encompasses original landscapes, figurative works and still life in a contemporary style of realism. Also offering an exhibit of 19th Century Chinese Ancestor Portraits. The show is enhanced by a display of Chinese silk opera gowns. Hours: Fri.&Sat., 11am-5pm and Sun., 1-4pm. Contact: 336/922-6909.

Delurk Gallery, 207 W 6th Street, Winston-Salem. **Ongoing** - An artist run gallery, dedicated to the exposure and sale of current artists' work. Hours: Wed.-Sat., noon-8pm; Sun., noon-6pm; & till 10pm on 1st Fri. Contact: 336/486-3444 or at (www.delurkgallery.com).

Earthbound Arts, 610 N. Trade St., Winston-Salem. **Ongoing** - Featuring an unique gallery showcasing the nature-related works of Gordon Jones and Lucy Duncan. Original designs in clay, copper, and stained glass as well as handcrafted herbal soaps, sterling and copper jewelry, block print cards, masks, wind chimes, garden art, clay beads, herbal teas, natural incense, beeswax candles and much more. Hours: Tue.-Sat., 11am-6pm. Contact: 336/773-1043 or e-mail at (lucy@earthboundarts.com).

Fiber Company, 600 N. Trade Street, Winston-Salem. **Ongoing** - Fiber Company is a working studio and partnership of five women creating wearable art, home accessories and textile art located in the heart of the Downtown Art District.

With over 60 consignment artists, most local artists, Fiber Company offers a wide range of gift items. Hours: Tue., 11am-3pm; Wed.-Fri., 11am-5pm; Sat., 11am-3pm & by appt. Contact: 336/725-5277 or e-mail at (fibercompany@gmail.com).

Island Arts On Trade, 521 N. Liberty St., Ste. 100, in the Artists On Liberty Building, across from the DADA Community Center, Winston-Salem. **Ongoing** - Featuring visual and functional artwork by gallery artist, Gary Campbell. Also, featuring other multicultural artists and mixed media artwork throughout the year. Hours: Fri.-Sat., 1-5pm or by appt. Contact: 336/722-0510.

Patina, 217 W. 6th St., Winston-Salem. **Ongoing** - Featuring a unique shop with art by local potters, craftspeople, and painters. Patina also carries unique clothing, gifts, home accessories and gift baskets. Hours: Tue.-Sat., 10am-6pm. Contact: 336/725-6395 or e-mail at (patinas-tore@aol.com).

Studio7/McNeely Gallery, 204 West 6th Street, NODA Arts District, Winston-Salem. **Ongoing** - Also featuring works by Priscilla Thornton Williams. Hours: Thur.-Sat., noon-5-

pm. Contact: e-mail to (studio7ws@gmail.com).

The Other Half, 560 North Trade St., Winston-Salem. **Ongoing** - Featuring works by Mary Ann Zotto, Chris Teague, Nic Bernard, Dodie Campbell, Jack Dent, Celeste Chapman-Dent, Ron Propst, Jason Probst, Kathy Townsend and Mike Cowan. Hours: Tue.-Sat., 11am-5pm or by appt. Contact: 336/407-5494 or e-mail at (peeps321@earthlink.net).

Village Smith Galleries/VSG Fine Arts, 717 N. Trade Street, Winston-Salem. **Ongoing** - American and European watercolors, oils, antique engravings and contemporary works by Gorg, McKnight, Boulanger, Alvar, Nicole Monteran, Stephen White and other gallery artists. National and regional crafts are represented in the fields of ceramic and glass. Hours: Mon.-Sat., 10am-5pm. Contact: 336/723-3653.

Winterfire Craft Gallery, 145 Stratford Road, Winston-Salem. **Ongoing** - Featuring pottery by Hank Goodman as well as hand-crafted jewelry, metal sculpture, hand-thrown pottery, art glass, and calligraphy prints. Hours: Mon.-Fri., 10am-6pm; Sat., 10am-5pm & Sun., 11am-5pm. Contact: 336/748-0145.



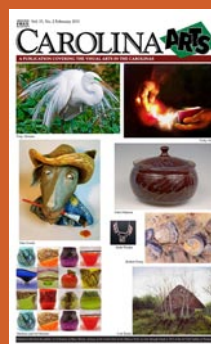
Visit
Carolina Arts
on Facebook

Go to this [link](#) and
"like" us!



Don't forget about our website:

www.carolinaarts.com



You can find [past issues](#) all the way back to August 2004!

You can find [past articles](#) all the way back to June 1999

Also don't forget about our two blogs:

[Carolina Arts Unleashed](#)

[Carolina Arts News](#)

Send us your email address to be added to our list to receive notice of each monthly issue.

info@carolinaarts.com