

10th ANNUAL ART on the NEUSE

Outdoor Arts Festival

Saturday, May 11, 9AM to 4PM

\$35 per booth space. All Media. No Commission. Live Music.

Call for Artists!



Visit <http://www.pamlicoarts.org> for registration form. Deadline: April 26.

Oriental is just 40 minutes from New Bern, NC.

NC Wesleyan College in Rocky Mount, NC, Features Works by Ken Morgan

NC Wesleyan College in Rocky Mount, NC, will present an exhibit of works by retired professional acrobat and New York City artist, Ken Morgan, on view in the Mims Gallery, from Feb. 22 through Mar. 24, 2013.

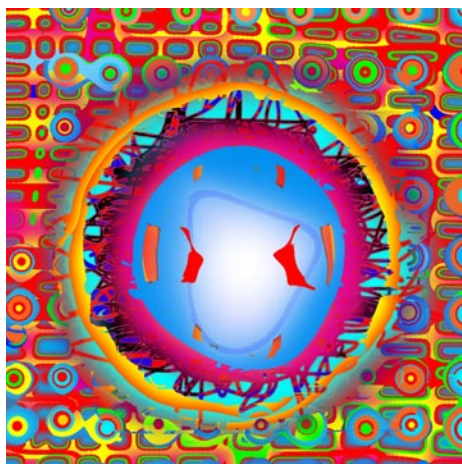
After retiring as a professional acrobat, suffering progressively debilitating arthritis, and last a stroke Morgan has been using the computer as his artistic tool. Self-taught and already known for his abstract expressionist pre-stroke drawings, Morgan exhibits his digitally explosive paintings at the world famous O.K. Harris Gallery in NYC.

The Mims Gallery here at Wesleyan is fortunate to be able to present his work to a new audience. This work is not only arrestingly beautiful but will knock you over with its expressive power. Coming from an artist who has dedicated his life to the dynamic physical expression of the body's outer limits; he carries such qualities into smack bold color, symmetry and nuanced balance.

Here are a few highlights Morgan has written about his unusual life:

Picture This: It's 1949 and I'm nine months old, sitting in an old tin wash bucket welded to the end of a twelve-foot pole being balanced on my father's forehead.

Now Picture This: I'm eighteen years old, doing a free headstand on top of a twenty-three-foot perch pole balanced on my father's forehead performing on Don Amechi's televised *International Showtime* in Sherbrooke, Canada (1967). We share the bill with, among others, "The Human Cannonball Act" (the world



Work by Ken Morgan

famous Zacchinas).

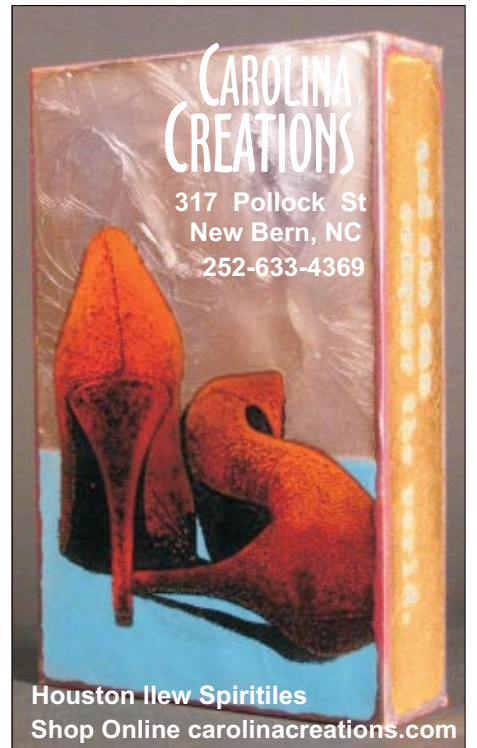
Such was my beginning. Born into a first-generation family acrobatic act, my father, two brothers, sister and myself - billed as "Al Morgan and His Toy Boys," later to be called the "Al Morgan Family," performed throughout New England, Canada, and as far south as Tennessee. Starting in local bars, we graduated to nightclubs, carnivals/state fairs, corporations, the Boston Garden, Madison Square Garden, commercials for unicycles, and ended on Don Amechi's *International Showtime*.

Morgan has generously made artist proof prints available at an affordable cost with the proceeds to go to the Mims Gallery Fund.

For further information check our NC Institutional Gallery listings, call the gallery at 252/985-5268 or visit (www.ncwc.edu/Arts/Mims/).

in celebration of *The Great Gatsby* by F. Scott Fitzgerald. The Big Read is a national program through the National Endowment for the Arts, designed to revitalize the role of literature in American culture and to encourage reading for pleasure and enlightenment. Wilmington partners include the Cape Fear Literacy Council, WHQR, New Hanover County Public Library, University of North Carolina at Wilmington, New Hanover County Public High Schools, Cape Fear Community College, Cameron Art Museum, YWCA and the Arts Council of Wilmington and New Hanover County.

From *Gatehouse to Winehouse: Inside the Artist's Workplace - Minnie Evans, Elisabeth Chant and Claude Howell*, invites you to enter and imagine three historic places of artistic creation in Wilmington, NC: Minnie Evans' tiny gatehouse, Elisabeth Chant's winehouse and Claude Howell's downtown apartment. From 1948-1974, visionary artist Minnie Evans created hundreds of artworks while working as gatekeeper at Airlie Gardens. In the 1920s, mystic Elisabeth Chant taught art classes at



Houston Ilew Spiritiles
Shop Online carolinacreations.com

Cameron Art Museum in Wilmington, NC, is Featuring Three Exhibitions

The Cameron Art Museum in Wilmington, NC, is offering three exhibits including: *Sometimes Madness is Wisdom: The Artwork of Zelda Sayre Fitzgerald*, on view through Mar. 10, 2013; *From Gatehouse to Winehouse: Inside the Artist's Workplace - Minnie Evans, Elisabeth Chant and Claude Howell*, on view through Apr. 14, 2013; and *The Transformative Power of Friendship*, on view through Mar. 10, 2013.

An icon of the 1920s, named "the first American Flapper" by her husband, Zelda Sayre Fitzgerald (July 24, 1900 - March 10, 1948) longed to be known as something other than just the wife of writer F. Scott Fitzgerald. For years after their marriage and up until her death, Fitzgerald threw herself into several creative outlets including dance, writing and painting. This exhibition explores the artwork of Fitzgerald with 32 framed artworks created from 1927 through the late 1940s, on loan from the Montgomery Museum of Fine Arts and Ms. Eleanor Lanahan, granddaughter of F. Scott and Zelda Fitzgerald, along with reproductions of historical photographs from the F. Scott Fitzgerald Papers of Princeton University



Work by Zelda Sayre Fitzgerald

Library. Parfois La Folie Est la Sagesse (Sometimes Madness is Wisdom) comes from Fitzgerald herself. This was the title she gave to an exhibition of her work at the Cary Ross Gallery in New York City in 1934.

Fitzgerald's influence on her husband's writing is well known. In a review of her husband's second novel, *The Beautiful and the Damned* Zelda Fitzgerald quipped, "In fact, Mr. Fitzgerald - I believe that is how he spells his name - seems to believe that plagiarism begins at home."

This exhibition is being held in conjunction with The Big Read Greater Wilmington

continued above on next column to the right

Nelson Fine Art Gallery



Sunny Flowers by Eileen Corse

Eileen Corse Workshop

"Palette Knife Application"

March 11 - 13, 2013 \$395

Ever wanted to try a palette knife to apply your oil paints?
Learn the process with Eileen Corse!

Her method of painting is unique...
and she'll share her secrets!!



Nelson Fine Art Gallery
1982 Eastwood Road
Wilmington, NC
910.256.9956

www.NelsonFineArtGallery.com
info@nelsonfineartgallery.com

Works in Oil by Ruth Cox

January 7 -
February 16, 2013



www.sunsetrivermarketplace.com

10283 Beach Drive SW
Calabash, NC 28467
910.575.5999