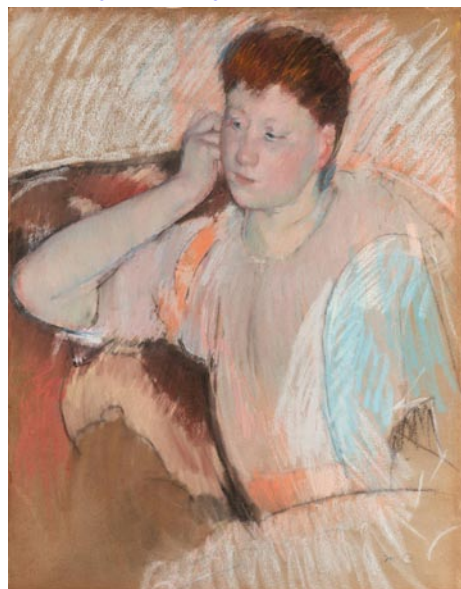


# SC Institutional Galleries

continued from Page 31

sculpture. **Community Gallery, Through Dec. 20** - "Mono No Aware," featuring works by Leigh Mitchell. Mitchell presents over 30 black & white photographs inspired by the ephemeral nature of things. Included in the exhibition are images that metaphorically allude to all the trees humans have cut down and all the pollution humans are adding to the land and atmosphere. Mitchell's work speaks to the precarious situation and tangled mess humanity and the earth are in and to the eerie sense of foreboding for what may lie ahead. 'Mono No Aware,' is a Japanese term meaning "beauty tinged with sadness." **The Shop at GCCA** - In celebration of our eighth anniversary, Greenville Center for Creative Arts is thrilled to announce the opening of our official gift shop! As another opportunity for GCCA to support local artists, visitors can shop for consigned artworks from Greenville-based artists including prints, small originals, jewelry, pottery, and more! The Shop at GCCA will also have novelty merchandise for sale so you can show your love for Greenville arts everywhere you go! **Ongoing** - Home to 16 studio artists. Hours: Wed.-Fri., 1-5pm. Contact: call 864/735-3948 or at ([artcentergreenville.org](http://artcentergreenville.org)).



Mary Cassatt (1844-1926), "Clarissa, Turned Left, with Her Hand to Her Ear," circa 1893

**Greenville County Museum of Art, 420 College Street, Greenville. Ongoing** - "Jasper Johns Prints: Juggling Fragments," includes more than 30 works by this American master. **Ongoing** - "From Cassatt to O'Keeffe," which highlights selections from the museum's permanent collection of American Impressionism. Featuring work by Mary Cassatt, Frank Duveneck, Gari Melchers, and Kate Freeman Clark, this exhibition invites viewers to consider the ideas and techniques that opened the door to modern visual expression as seen in works by William H. Johnson, Patrick Henry Bruce, and Georgia O'Keeffe. **Ongoing** - "Collection Highlights: African-American Art," features 17 works by as many artists. At the forefront of the exhibition is a realistic sculpture by John Wilson, whose monumental bronze head of Martin Luther King, Jr. captures the dignity and strength of the civil rights leader. Post-World War II non-objective painting is reflected in works by Beauford Delaney, Hale Woodruff, and Frank Wimberley. A lighter, but no less powerful, touch is embodied in a brilliant Color Field painting by Thomas Sills. The exhibition also includes evocative examples by Romare Bearden, Frederick Brown, Jacob Lawrence, Betye Saar, Merton Simpson, and Bob Thompson. **Ongoing** - "Andrew Wyeth: Running with the Land". This stunning retrospective showcases 59 works on paper, capturing Wyeth's preference for painting intimate subjects that were tied to the homes established by his father in both Chadds Ford, Pennsylvania, and Cushing, Maine. Wyeth drew inspiration from the distinctive characteristics and denizens of these locations, revealing universal traits in his depictions of landscapes, objects, and people. **Ongoing** - "All in the Family (Connections)," which assembles work by three generations of Wyeths--the first family of American painting--taking advantage of several rarely exhibited loans from a private collection and complementing the exhibition "Andrew Wyeth: Running with the Land". Admission: Free. Hours: Wed.-Sat., 10am-6pm and Sun., 1-5pm. Contact: 864/271-7570 or at ([www.gcma.org](http://www.gcma.org)).

**Lipscomb Gallery**, at South Carolina Governor's School for the Arts and Humanities, 15 University St., Greenville. **Ongoing** - We feature several exhibitions throughout each year - our own students and faculty, plus many guest artists. Hours: Mon.-Fri., 10am-4:30pm. Visitors are asked to sign in at the Administration Building's front desk before entering campus. Contact: 864/282-3777 or 864/282-3705.

**Metropolitan Arts Council Gallery**, 16 Augusta Street, Greenville. **Through Dec. 8** - "12 x 12 Exhibit", featuring new works by the participating artists on the Greenville Open Studios Tour in a unique display of 12" x 12" works. **Ongoing** - Featuring works by Greenville area artists. Hours: Mon.-Fri., 9am-5pm. Contact: 864/467-3132, or at ([www.greenvillearts.com](http://www.greenvillearts.com)).

**Museum & Gallery**, Bob Jones University, Wade Hampton Boulevard, Greenville. **Ongoing** - "Likely and Unlikely Pairings," featuring a fascinating juxtaposition of art and mundane objects revealing a variety of viewpoints. Through this special comparative display, the unique presentation serves as an engaging tool for all viewers interested in understanding the many facets of art, culture, and thought. **Ongoing** - Permanent exhibition of the finest collection of religious art in America, including works by Rubens, Botticelli, and Van Dyck. Offering visitors a 60-minute audio-guided tour of over 40 favored works for a modest fee. Hours: Tue.-Sun., 2-5pm. Contact: 864/242-5100, Ext. 1050 or at ([www.bjmg.org](http://www.bjmg.org)).

**Thompson Gallery**, Thomas Anderson Roe Art Building, Furman University, Greenville. **Through Dec. 8** - "2023 Furman Faculty Exhibition: (Re) Introductions." The Department of Art has seen profound changes since its last full faculty exhibition in fall semester 2016. Learn about new ventures for longtime faculty and witness practices of the department's newer faculty members. Hours: M-F, 9am-5pm. Contact: 864/294-2282 or e-mail to ([furmanart@furman.edu](mailto:furmanart@furman.edu)).

**Visual Arts Institute**, on the Greer Campus of Greenville Technical College about 4 miles north of Greer on Highway 290, Locust Hill Road, Taylors. **Benson Campus Galleries, Through Dec. 1** - "2023 Visual Arts Annual Student Exhibition (VAASE)," juried by Freda (Gin Wen) Sue. "VAASE" highlights 59 students' works in 10 categories. Department of Visual Arts (DVA) curriculum is comprised of multiple disciplines in fine art and applied art and most of these disciplines are showcased in "VAASE". For high school students considering furthering their studies in art, this is an especially apt exhibition to explore. For the general public "VAASE" can provide a glimpse of many of the fine arts, for example, painting, drawing, and printmaking. Web design, graphic art, photography and typography are also on view. DVA goals of preparing students to move directly into the workforce or on to four-year institutions are in evidence. Hours: Mon.-Thur., 9am-7pm & Fri., 9am-2pm. Contact: Laraine Wells, Administrative Assistant at 864/848-2023 or e-mail at ([laraine.wells@gvltec.edu](mailto:laraine.wells@gvltec.edu)).

ALTERNATE ART SPACES - Greenville **Centre Stage Theatre Gallery**, 501 River Street, Greenville. **Through Jan. 12, 2024** - "Darryl Debruhl and Tim Speaker". **Ongoing** - Featuring works by visual art members of MAC. Exhibits are offered in collaboration with the Metropolitan Arts Council. Hours: Tue.-Thur., 2-5pm & 2 hr. prior to shows. Contact: MAC at 864/467-3132, at ([www.greenvillearts.com/mac-featured-galleries/](http://www.greenvillearts.com/mac-featured-galleries/)).

## Greenwood

**Arts Center of Greenwood**, at the Federal Building, 120 Main Street, Greenwood. **Ongoing** - Featuring works by local and regional artists. Hours: Mon.-Fri., 10am-5pm & Sat., 10am-3pm. Contact: 864/388-7800 or at ([www.emeraldtriangle.us/arts-center/](http://www.emeraldtriangle.us/arts-center/)).

**Lander University Fine Art Gallery**, Cultural Center Building, 320 Stanley Ave., Greenwood. **Ongoing** - The Lander University Fine Art Gallery features a variety of exhibits throughout the year. The gallery features national and regional artist, as well as student and faculty work showcasing painting, sculpture, ceramics, graphic design, and photography. Hours: Mon.-Fri., 10am-4pm. Contact: call Jon Holloway at 864/388-8810 or at (<https://www.facebook.com/pages/category/Art-Gallery/Lander-University-Fine-Art-Gallery-166498067092236/>).

## Greer

**Edward R. Driggers City of Greer Center for the Arts**, 804 Trade St., Greer. **Dec. 9, from 10am-2pm** - "Holiday Arts Fair". **Ongoing** - Featuring artists studios. Hours: Tue., noon-8pm; Fri., 9am-3pm; & Sat., 10am-2pm. Contact: call Sara Odem at 864/5383 or at (<http://greerculturalarts.com/>).

## Hartsville

**Black Creek Arts Center**, 116 West College Ave., Hartsville. **Jean & James Fort Gallery, Through Dec. 11** - "Annual Holiday Market". **Ongoing** - Featuring works by local and regional

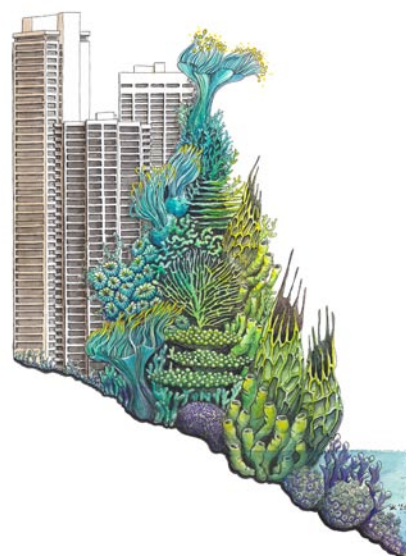
artists. Hours: Tue.-Thur., 10am-1pm and 2-5pm; Fri., 10am-2pm and 1st Sat. of the month 10am-1pm. Contact: 843/332-6234 or at ([www.blackcreekarts.org](http://www.blackcreekarts.org)).

**Hartsville Museum and Sculpture Courtyard**, 222 North Fifth Street, corner of Fifth Street and Home Avenue, Hartsville. **Ongoing** - Housed in a 1930's Post Office Building, the museum has kept many of the unique architectural features of the building. The skylight, original to the building, has been retrofitted with stained glass panels depicting the flora and fauna significant to the area. The Sculpture Courtyard added in 2000 features many different types of sculpture. The Showcase Gallery presents special exhibits focusing on history, the arts or present day events. Hours: Mon.-Fri., 10am-5pm (closed from noon-1pm on Fri.). Contact: 843/383-3005 or at ([www.hartsvilmuseum.org](http://www.hartsvilmuseum.org)).

**The Patz Fowle Visual Arts Studio**, SC Governor's School for Science + Mathematics, 401 Railroad Avenue, Hartsville. **Ongoing** - A public, boarding high school for students in grades 11 and 12. The school concentrates on science and mathematics, but offers the full spectrum of the humanities as well. For info visit ([www.scgssm.org](http://www.scgssm.org)).

## Hilton Head Island Area

**Art League of Hilton Head Gallery**, at the Arts Center of Coastal Carolina, 14 Shelter Cove Lane, Hilton Head Island. **Through Dec. 30** - "Holiday Gallery of Gifts," featuring handmade gift items, jewelry and artwork for sale by local artists. A festive tradition continues this holiday season as Art League Gallery is transformed into a Gallery of Gifts, featuring one-of-a-kind decor and gift items handmade by local artists. Shoppers can shop for works of art - paintings, photography, pottery, or mixed media - artistic stocking stuffers, jewelry, and unique ornaments and holiday decor. **Ongoing** - Featuring works by members of the Art League of Hilton Head. Hours: Mon.-Sat., 10am-4pm. Contact: 843/681-5060 or at ([www.artleaguehi.org](http://www.artleaguehi.org)).



Work by Stephanie Kilgast

**Coastal Discovery Museum**, at Honey Horn, off Highway 278, across from Gumtree Road, Hilton Head Island. **Main Gallery, Through Mar. 24, 2024** - "Intricate Oceans: Coral in Contemporary Art." Several Curator's Tours will be offered on Dec. 2, at 1pm, and Feb. 22, at 11am. Featuring work from seven contemporary artists who are deeply concerned with the health of the coral reefs, the exhibition will explore through their work the environmental pressures facing our oceans. International in scope, the exhibition will highlight work from ceramicists Courtney Mattison and Lauren Shapiro (USA), textile artist Vanessa Barragão (Portugal), painter Lisa Tubach (USA), mixed media artists Stephanie Kilgast (France) and Mara Lefebvre (USA), and sculptor Ginger Ertz (USA). **Ongoing** - This beautiful 68-acre site serves as the Museum's base for exhibitions and programs highlighting art, culture, history, and the environment of the Lowcountry. Visit the Discovery House to enjoy temporary exhibitions, see the permanent collection, and attend lectures and other programs. Seasonal attractions include the Karen Wertheimer Butterfly Habitat, Camellia Garden, and Heritage Gardens. Public Art on the Grounds, **Ongoing** - Featuring a butterfly sculpture by South Carolina artist Eric Moore; work by sculptor John Van Alstine; and murals by Italian artist Hitnes. Admission: FREE. Hours: Mon.-Sat., 9am-4:30pm & Sun., 11am-3pm. Contact: 843/689-6767 or at ([www.coastaldiscovery.org](http://www.coastaldiscovery.org)).

## Lake City

**Crossroads Gallery**, 124 West Main Street, Lake City. **Through Dec. 3** - "Southern Voices/Global Visions," an exhibition of work by 46 contemporary artists, presented by ArtFields Collective and South Arts. **Ongoing** - Featuring

past winning entries from ArtFields competitions on a rotating basis. Hours: Tue.-Sat., 11am-5pm. Contact: ([www.artfieldssc.org](http://www.artfieldssc.org)).

**Jones-Carter Gallery**, 105 Henry Street, next to The Bean Market, Lake City. **Through Dec. 3** - "Southern Voices/Global Visions," an exhibition of work by 46 contemporary artists, presented by ArtFields Collective and South Arts. Hours: Tue.-Sat., 11am-5pm. Contact: call 843-374-1505 or at (<https://www.facebook.com/JonesCarterGallery/>).

**TRAX Visual Art Center**, 122 Sauls Street, Lake City. **Through Dec. 3** - "Southern Voices/Global Visions," an exhibition of work by 46 contemporary artists, presented by ArtFields Collective and South Arts. Hours: Tue.-Sat., 11am-5pm. Contact: 803/435-3860 or at (<https://www.traxvisualartcenter.com/>).

**The ROB**, 245 S. Church Street, Lake City. **Through Dec. 3** - "Southern Voices/Global Visions," an exhibition of work by 46 contemporary artists, presented by ArtFields Collective and South Arts. Hours: Call about hours. Contact: 843/374-2115 or at ([www.artfieldssc.org](http://www.artfieldssc.org)).

## Lancaster



Catawba potter and Native American Studies Center 2023 Artist-in-Residence Bill Harris will demonstrate pottery techniques in the Center's galleries from 10am-3pm, on Saturday, Dec. 2.

**USC Lancaster Native American Studies Center**, 119 South Main Street, Lancaster. **Dec. 2, from 9am-4pm** - "10th Annual Winter Art Festival". Just in time for the gift-giving holidays, shop for jewelry, Catawba pottery, baskets, quilts, and more one-of-a-kind artwork at the 10th Annual Winter Native American Art and Craft Festival, held at USC Lancaster's Native American Studies Center. Held in conjunction with See Lancaster's Christmas in the City event, visitors can browse crafts, decorative items, mixed media artwork, and more from many regional Native American tribal communities. "Not only is the festival a great place to purchase unique artwork for holiday gifts, but it also presents a great opportunity to interact with the artists and hear the stories behind the creations," said Center Assistant Curator and Program Assistant Sharon Simmers-Norton, who coordinated the festival. "We have over two dozen Indigenous artists scheduled for the event, and they're excited to share their work and stories with the community." **Five Points Gallery, Through Aug. 5, 2024** - "More than a Game: Indigenous Sports and Athleticism". This exhibit is on display in conjunction with the 18th Annual Native American Studies Week, "Indigenous Athletes and Athleticism: Vital Contributions to a National Passion." The athletics-focused exhibit highlights information about Indigenous athletes- some with Carolina connections, such as Buck George, who played football for the Clemson Tigers and the team now known as the Washington Commanders- and their contributions to the Olympics and competitive sports such as basketball, hockey, football, wrestling, track and field, and more. "This exhibit takes a look at a subject we've never covered before," said Center Special Projects Coordinator Elisabeth Avelar. **North Gallery, Through Feb. 15, 2024** - "Backyard Vines: Artwork by Nancy Basket". "The Traditional Artwork of Nancy Basket" was open for a handful of weeks at the Center before the facility's temporary closure in March 2020 due to COVID-19. Some of the artwork featured in the original exhibit will return, such as the 8-foot sculptures of the "Uktena" (featuring motion-sensor eyes) and "Thunderbird," along with new pieces, like oversized kudzu chandeliers. Also included in the exhibit are thumb-sized miniatures, pine needle baskets, woven baskets, manikin floor lamps, and more. In addition to working with pine needles and kudzu, Basket has woven with corn husks, rye straw, horsehair, wisteria, grapevines, and cat tails. **Red Rose Gallery, Through Mar. 31, 2024** - "Exploring the Diversity of American Religious Life through Sound". Choirs singing. Monks chanting. The reading of religious texts. These are religious sounds. But so too are the creaking of church pews and the clanking of pots during the preparation of a communal meal. "Sounds of Religion" is a Smithsonian poster exhibition that explores how rituals and gatherings of religious communities create a complex soundtrack of religions in America that teaches how people behave, how they're different, and how they're alike. "Sounds of Religion" is organized by the Smithsonian Institution Traveling Exhibition Service in cooperation with the American Religious Sounds Project of The Ohio State University and Michigan State

continued on Page 33