

# NC Commercial Galleries

continued from Page 52

8am-5pm & Sat., 10am-6pm. Contact: call Ben Philips at 904/716-3116 or e-mail to (contact@crimsonlaurelgallery.com).

## Morehead City

**BluSail Gallery**, Artists' School & Pottery Studio, 903 Arendell Street, downtown art district, Morehead City. **Ongoing** - The gallery represents and exhibits work by over 30 local artists. The Artists' School and Pottery Studio are working studios designed to educate and enhance local talent for children and adults of all ages and all levels of experience. Hours: Mon.-Sat., 10am-5:30 or by chance. Contact: 252/723-9516 or at (www.blu-sail.com).

**Budding Artists, Ltd.**, 3000 Arendell Street, Unit 9, Morehead City. **Ongoing** - The gallery provides custom framing and artist liaisons for commissioned pieces. Hours: Mon.-Sat., 10am-6pm. Contact: 252/247-5111.

**Carteret Contemporary Art**, 1106 Arendell St., Morehead City. **Ongoing** - Featuring original paintings and sculpture from regional and national artists, and shows with gallery artists during spring and summer. Hours: Mon.-Fri., 10am-5pm and Sat., 10am-4pm. Contact 252/726-4071 or at (www.twogalleries.net).

**Morehead City Photography Gallery**, 1300 E Arendell Street, Morehead City. **Ongoing** - The gallery showcases the personal work of Mike Basher with a collection of limited edition black and white silver prints—images gathered alongside his fifteen-year career as an advertising and editorial photographer. A recent transplant to the Beaufort/Morehead City area, his collection consists of serene photographs of beautiful local coastal scenes, and diverse landscapes from around the country. Hours: Thur.-Sat., 10am-6pm; Sun., noon-4pm and by appt. Contact: 661/305-7026 or at (www.bashergallery.com).

**Impressions Art Gallery & Studio**, 4428 Arendell Street, Morehead City. **Ongoing** - Featuring works by Janet Jaworski, Kyle & Katie Highsmith, David Jaworski, Stephen Moore, Susan Love Moore, Drew Hoover, Rhonda Gardner, Jlyn Henderson, Kathleen Schaffer, and Lou Wilson. Hours: Thur.-Sat., 11am-5pm or by appt. Contact: 252/499-9226 or at (https://www.impressionsartgallery.com/).

## Morganton

**Hamilton Williams Gallery**, 403 East Union St., downtown Morganton. **Ongoing** - A gallery of fine craft featuring the pottery, jewelry, metal, fiber, and art of artists from Western North Carolina and the Appalachian region, adjoining the production studio of resident potter, Hamilton Williams. Hours: Mon.-Fri., 10am-6pm & Sat., 10am-5pm. Contact 828/438-1595 or at (www.hamiltonwilliams.com).

## Nags Head

**Seaside Art Gallery**, 2716 Virginia Dare Trail South, Nags Head. **Ongoing** - Featuring works of local and contemporary artists, as well as a wonderful selection of art by such masters as Picasso, Chagall, Whistler, Icar, Renoir and many others. Sculpture, porcelain and art glass by Hummel, Staffordshire, Tiffany and others are represented. As well as a fine selection of estate jewelry. Since the early 1980's, a major feature of Seaside Art Gallery has been our large collection of original animation art by such studios as Disney, Warner Bros., Hanna-Barbera, United Features Ltd., and other animation studios. Hours: Mon.-Sat., 10am-5pm. Contact: 252/441-5418, 1-800/828-2444 or at (http://www.seasideart.com/).

## New Bern

**Downtown New Bern, Oct. 14, 5-8pm** - "ArtWalk". Come and enjoy special events at downtown business in New Bern featuring art and a festive evening on the 2nd Fri. of the month. Contact: for info call Carolina Creations at 252/633-4369 or visit (www.carolinacreations.com).

**Carolina Creations Fine Art and Contemporary Craft Gallery**, 317-A Pollock Street, New Bern. NC. **Ongoing** - Featuring fine art and contemporary crafts including pottery, paintings, glass, sculpture, and wood by over 300 of the countries top artists. Hours: Mon.-Sat., 10am-6pm, & Sun., 11am-3pm. Contact: 252/633-4369 or at (www.carolinacreations.com).

**Living Color Ceramics**, 602 Pollock Street (entrance on Metcalf Street), New Bern. **Ongoing** - Suzanne W. Richey aspires to carry out

the North Carolina pottery traditions of making stoneware pots for food service, decor and entertaining. Pots are intended for everyday use and to be as durable as they are enjoyable. Richey makes most pots on the wheel, but occasionally they are hand built. After passing a greenware inspection for quality and appearance, they are then bisqued, decorated and atmospheric fired to cone 10. After passing a final inspection for quality, the pots earn placement in the gallery. Hours: open by appt. only. Contact: 252/675-2011 or at (https://livingcolorceramics.com/).

**Stardust Gallery**, 244 1/2 Middle Street, Suite D, New Bern. **Ongoing** - Featuring works by over 25 NC artists including works in acrylic, oil & watercolor; photography; pen & ink; digital pop art; pottery; weaving; handmade wood and iron creations; lampwork glass jewelry & handblown glass; fine handmade silver jewelry; stained glass; and handwoven baskets. Hours: Tue.-Thur., 11am-5pm & Fri.-Sat., 11am-7pm. Contact: 252/617-0209 or at (http://www.stardustartgallery/).

**The Art Gallery @ Le Bistro & Fine Dining**, 3402-B Trent Road, New Bern. **Ongoing** - Featuring works by local artists who explore a wide range of media including Gayle George, Nell Maha, John Dreas, Nada Behr, Doris Walker, Barbara Cornish, B. Chris Munyan, Douglas Rowe, Tess Luper, James King, William K. Henson, John Mitchell, Joan Russell, Betty Brown, Blain Kruger and Dan Wilson. Come in for lunch or dinner, have a glass of wine and peruse the work of these fine artists. Hours: Tue.-Wed., 10am-5pm; Thur.-Sat., 10am-8pm; and Sun., 9am-2pm. Contact: 252/637-7331 or at (http://www.lebistrofinediningandtheartgallery.com).

**The Dirty Bird**, 244 1/2 Middle Street, New Bern. **Ongoing** - Featuring an eclectic mix of paintings, ceramic items, jewelry and repaired and painted furniture. Hours: Tue.-Thur., 11am-6pm & Fri.-Sat., 10am-5pm. Contact: 252/626-1983.

**The Sanctuary Gallery**, 2601-A Trent Rd., New Bern. **Ongoing** - The Sanctuary Gallery is New Bern's newest art gallery and is artist owned and operated representing regional and national artists. The fine art and fine craft gallery has a diverse collection of paintings, drawings, sculpture and hand-craft2ed jewelry. Representing both regional and national artists. The fine art and fine craft gallery has a diverse collection of paintings, drawings, sculpture and hand crafted metal jewelry to complement any taste. Hours: Tue.-Thur., 10am-5pm & Fri.-Sat., 10am-6pm. Contact: 252/571-8562 or at (www.theSanctuaryGallery.com).

## Ocracoke Island

**Village Craftsmen**, 170 Howard Street, Ocracoke Island. **Ongoing** - We feature pottery, glass, jewelry, kitchen items, musical instruments, wrought iron, baskets, bells, boxes, soaps, accessories, clothes, games, kaleidoscopes, lawn sprinklers, lamps & lampshades, prints, tin ware, pewter items, tiles and much more - all made by American artists. Hours: Mon.-Sat., 10am-4pm & Sun., 10am-2pm. Contact: 252-928-5541 or at (www.villagecraftsmen.com).

## Old Fort



Works from Turtle Island Pottery

**Turtle Island Pottery**, 2782 Bat Cave Road, Old Fort. **Ongoing** - Featuring handmade pottery by Maggie and Freeman Jones, who create one of a kind, functional, decorative stoneware items. From cups to umbrella stands, mirror frames and clocks. Sculptural and inspired by nature, many forms are reminiscent of antique pottery from the arts and crafts movement and art nouveau styles. Hours: Showroom open most Saturdays, call ahead for any day of the week. Contact: 828/669-2713 or at (www.turtleislandpottery.com).

## Oriental

**Village Gallery**, 300 Hodges Street, Oriental. **Ongoing** - The Village Gallery features the

works of more than 40 member and consigned artists. The Gallery is staffed by its resident artists. As a cooperative gallery we offer great values. You buy directly from the juried artists. Hours: Wed.-Sun., 10am-5pm. Contact: 252/249-0300 or at (www.villagegallerync.com).

## Outer Banks Area

**Pea Island Art Gallery**, 27766 NC Hwy. 12, Salvo. **Ongoing** - Featuring handmade works by over 100 Outer Banks artists. Hours: call ahead. Contact: 252/987-2879 or at (www.peaislandartgallery.com).

**Swell Art Gallery**, 46854 NC 12, Hatteras Island, Buxton. **Ongoing** - Featuring fine art and craft works by local and NC artists. WE also do custom framing. Hours: Tue.-Fri., 11am-5pm & Sat., 11am-4pm. Contact: at (swellartgallery.com).

## Pinehurst - Southern Pines Area

**Broadhurst Gallery**, 2212 Midland Rd., Pinehurst. **Ongoing** - Featuring works by regional, national and international artists. Hours: Tue.-Fri., 11am-5pm & Sat., 1-4pm. Contact: 910/295-4817 or at (www.broadhurstgallery.com).

**Hollyhocks Art Gallery**, 905 Linden Rd., one mile from Pinehurst next to Elliott's restaurant, Pinehurst. **Ongoing** - Featuring original work by award winning local artists Jane Casnelie, Diane Kraudelt, Irene McFarland, Paula Montgomery, and Robert Gera. Offering a wide range of work from contemporary to traditional, the gallery includes portraiture, vibrant Tuscan scenes, palpable pet portraits, beautiful florals and more, in a wide variety of mediums including oils, acrylics, pastels and unusual black and white washes. Hours: Mon.-Sat., 10am-9:30pm. Contact: 910/255-0665 or at (www.HollyhockArtGallery.com).

**One of a Kind Gallery, LLC**, 128 W. Pennsylvania Ave., (Belvedere Plaza) Southern Pines. **Ongoing** - The Gallery is located in what was once an old hotel building (built in 1905). One of a Kind Gallery occupies three "hotel rooms" plus two alcoves, making it ideal for displaying fine art. The works of 25 artists are featured in the Gallery, with a wide range of media represented: photography, painting, pottery, sculpture, notecards, painted silk scarves, basketry, jewelry, scented candles, clocks, and fiber arts. All of the art is for sale. Hours: Tue.-Sat., 10am-5:30pm and open until 7pm on Fri. Contact: 910/725-0465 or at (www.oneofakindgalleryllc.com).

## Pittsboro

**Throughout Chatham County, Dec. 3&4 and Dec. 10&11** - "30th Anniversary Chatham Studio Tour," will welcome visitors into member artists' studios. Visitors will get a unique behind-the-scenes perspective on how art is made. The 2022 Tour features 54 participating artists in 39 studios. Members of the Guild will offer original works of art, including paintings, sculpture, pottery, photography, glass, wood, jewelry, and digital and fabric art. The tour is free. Visitors can use the map provided in the Tour brochure, which can be found in the Winter issue of "Chatham Magazine", at each studio, at libraries, galleries, community centers, local shops, and businesses all across the Triangle as well as online at (http://www.chathamstudiotour.org).

**All In One Pottery**, 115 Hobbs Road, Pittsboro. **Ongoing** - The pottery houses an eclectic mix of hand-painted maiolica dinnerware, pitfired & raku vases, and hand-crafted musical instruments by Allen McCanness; as well as pitfired sculptural ceramic artwork by Louise Hobbs McCanness. Hours: by appointment only. Contact: 919/542-6162

**Liquidambar Gallery & Gifts**, 80 Hillsboro Street, Pittsboro. **Ongoing** - Featuring the works of gallery owners Kitty and John Mecham. The gallery has also been a showcase for over 85 artists, featuring a wide variety of both 2-D and 3-D arts and crafts during the past 10 years. Hours: Wed.-Sat., 10:30am-5:30pm. Contact: 919/542-1773, e-mail at (liquidambargallery@gmail.com) or at (http://www.liquidambarstudio.com/).

**Mark Hewitt Pottery**, 424 Johnny Burke Road, Pittsboro. **Ongoing** - For thirty-seven years, Mark Hewitt has been making beautiful, functional and decorative pots, using locally sourced materials, and firing them in a large wood-burning kiln here in Pittsboro, NC. You can find a lovely selection of his finely crafted pottery in our barn/showroom.. Hours: by appt. only. Contact: 919) 542-2371 or at (https://hewittpottery.com/).

**Pittsboro Gallery of Arts**, 44-A Hillsboro Street, located at the center of downtown Pittsboro Pittsboro. **Through Jan. 31, 2023** - View our latest show at the gallery...high-quality fine art and fine craft created by 30 regional artists and craftspeople. When you visit you'll find that the gallery is a destination Art Gallery, situated in a historic, bustling small town, just steps from the County Courthouse. The gallery has a sense of space and beauty in every direction and includes a mix of many mediums. **Ongoing** - This gallery is owned and operated by local and regional artists who provide Chatham county and the surrounding area with high-quality fine art and fine craft. The gallery is spacious, allowing for over 30 artists to show their creations in many media...oil, acrylics, watercolor, etching, as well as collage and fiber arts. You'll find fine jewelry, sculptural ceramics and pottery, woodworks and baskets on display. Hours: Tue.-Sat., 10:30am-5:30pm & Sun., 11am-5pm. Contact: 919/704-8552 or at (https://www.pittsboroarts.org).

## Raleigh Area



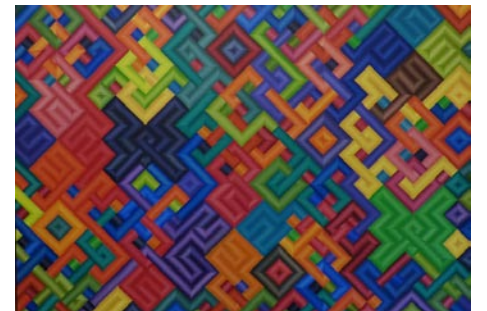
Work by David Zimmerman

**ArtSource Fine Art & Framing**, 4421-123 Six Forks Road (behind Bonefish Grill, across from Brother's Cleaners at North Hills...look for the red door), Raleigh. **Through Dec. 31** - "Annual 12x12 Holiday Exhibition," featuring works by dozens of participating artists with over 100 new small works. **Ongoing** - ArtSource is a fine art gallery housing over 1,600 works of art by 65+ artists. This award-winning gallery has assisted collectors and businesses in the selection of fine art, custom art pieces and framing for over 20 years. Hours: Tue.-Sat., 10am-6pm or by appt. Contact: 919/787-9533, or at (www.artsource-raleigh.com).

**Ashley's Art Gallery**, 701 N. Main St, located 12 miles south of Raleigh, Fuquay-Varina. **Ongoing** - Featuring fine art originals by national and local artist including Terry Isaac, Braidt Braldis and John Weiss and reproductions by Pino, Robert Bateman, Carl Benders, Bev Doolittle and William Mangum. Hours: Mon.-Thur., 11am-6pm & Fri.-Sat. 10:30am-5pm. Contact: 919/552-7533 ext.3 or at (www.ashleyart.com).

**Charlotte Russell Contemporary Fine Art Gallery**, 2012 A Fairview Road, Five Points area, Raleigh. **Ongoing** - Charlotte Russell Contemporary Fine Art Gallery offers original artworks by emerging and mid-career artists in our newly opened art gallery. Hours: Wed.-Sat., 11am-4pm or by appt. Contact: 415/601-0023 or at (www.charlotterussellcontemporary.com).

**Flanders Gallery**, 505 S. Blount Street, Raleigh. **Ongoing** - Flanders Gallery is committed to cultivating the careers of emerging artists. Through its rigorous exhibition program, the gallery continues to explore new concepts in contemporary art using various media. Flanders Gallery is dedicated to exhibiting provocative and innovative contemporary art, producing 14-18 exhibits each year both in the gallery and in alternative exhibit spaces. Hours: Wed.-Sat., 11am-6pm. Contact: 919/757-9533 or at (http://flandersartgallery.com).



Work by George Snyder

**Gallery C**, 540 North Blount Street, Raleigh. **Through Dec. 30** - "New Works by George Snyder". "For nearly five decades, George Snyder has methodically developed and transformed a personal visual language which he has used to create metaphors for his moods and concerns," said Dr. Patricia Mathews and Stanley Mathews, AIA Oberlin, OH. "What might appear to the casual observer to be similar, almost decorative compositions, on

continued on Page 54