

# Gibbes Museum of Art in Charleston, SC, Presents Several New Exhibitions

The Gibbes Museum of Art in Charleston, SC, is presenting several new exhibits including: *Mexico and the Charleston Renaissance*, on view in Gallery 2, through May 20, 2018; *Magic in the Mundane: Modernist Photography from the Robert Marks Collection*, on view in Gallery 3, through May 20, 2018; and *Pan American Modernism: Avant-Garde Art in Latin America and the United States*, on view in Galleries 8 & 9, through Jan. 7, 2018.

*Mexico and the Charleston Renaissance* explores the influence of Mexican art and culture upon American artists in the mid twentieth century, particularly artists associated with the Charleston Renaissance. The exhibition features paintings and works on paper from the Gibbes Collection by William Halsey, Anna Heyward Taylor, George Biddle, Charles Wilbert White, Edward Middleton Manigault and Corrie McCallum.

*Magic in the Mundane: Modernist Photography from the Robert Marks Collection* presents works that were influenced by surrealism and other modernist art movements. Early twentieth-century photographers expanded the traditional boundaries of the camera radically altering perceptions of everyday subjects. This exhibition features works by Alfred Stieglitz, Berenice Abbott, Laszlo Moholy-Nagy, Martin Munkácsi, and George Platt Lynes, from the Robert Marks Collection at the Gibbes.

*Pan American Modernism: Avant-Garde Art in Latin America and the*



Carlos Mérida, "Abstract with Three Figures", 1961, oil, sand, and pencil on wood, 34 5/8 x 41 3/8 x 1 3/8 in.

*United States* explores the rich visual dialogue that flourished across the Americas between 1919 and 1979.

Showcasing more than 70 important works of art, the exhibition examines Modernism as an international phenomenon, embracing the contributions of Latin American artists.

The exhibition was developed by the Lowe Art Museum, University of Miami, with the tour organized by International Arts & Artists, Washington, DC.

This exhibition is made possible by BlueCross BlueShield of South Carolina, the Gaylord & Dorothy Donnelley Foundation, the Ethel-Jane Bunting Endowment Fund, and Alice and Lance Wyatt.

For further information check our SC Institutional Gallery listings, call the Museum at 843/722-2706 or visit ([www.gibbesmuseum.org](http://www.gibbesmuseum.org)).

# City of Charleston, SC, Presents Works Focused on Charleston's Public Parks

The City of Charleston Office of Cultural Affairs presents *Posing Possibilities: Drawing Inspiration from and for Charleston's Parks*, on view at City Gallery through Dec. 18, 2017. This celebration of the beauty of Charleston's public spaces features the work of Jack Alterman, Janie Ball, Christophe Drumain, Karyn Healey, Alan Jackson, Hirona Matsuda, and Fletcher Williams III. An artists' talk with the exhibiting artists will be held on Dec. 9, at 2pm.

*Posing Possibilities* celebrates the promise of public parks and the people who nurture those spaces in a collaboration between multiple artists and the Charleston Parks Conservancy. Photographer Jack Alterman presents a series of portraits of the "Park Angels," the dedicated volunteer corps that helps the Conservancy improve and preserve Charleston's parks.

The exhibition also includes a display utilizing the artwork of architect Christophe Drumain highlighting the Conservancy's 10 years as a nonprofit organization that has collaborated with neighborhoods, businesses and the City of Charleston to renovate and beautify more than 25 city parks. Frequent collaborators Alan Jackson and Hirona Matsuda present a series of works based on five of Charleston's parks. Painter Karyn Healey examines the proposed Lowline linear park. Janie Ball shares landscape studies of the parks she knew growing up in Charleston. Fletcher Williams III's work meditates on public art.

Through this exhibition, City Gallery and the Charleston Parks Conservancy hope to engage visitors and Lowcountry residents alike in thinking about the role of art in public spaces, as well as to inspire them with the beauty of local parks and landscapes.

Photographer Jack Alterman has been framing the faces, buildings, and landscapes of Charleston since the 1970's.

Janie Ball has been engaged in creating art, for as long as she can remember. Her



Work by Karen Healey

paintings are composed of bold thoughtful shapes of color which when visually combined by the viewer "paint" the image.

Christophe Drumain is a partner at DesignWorks, a Charleston-based Landscape and Planning firm.

Karyn Healey has been an artist for many years, working as a graphic designer, a community art advocate, and adjunct faculty member teaching design and typography.

Alan Jackson is a professional architect who has an interest in abstract expressionism and minimalist artwork.

Hirona Matsuda uses primarily found and salvaged objects, refocusing the viewer's attention on things that have been deemed useless and of no aesthetic value. The assembled compositions are a delicate balance of color and texture and light and shadow.

Fletcher Williams III is a Charleston-based interdisciplinary artist whose theoretical and conceptual art making practice is rooted in a southern vernacular, which he finds essential to documenting the unweaving of Charleston's social and cultural fabric.

Established in 2003, the City Gallery at Waterfront Park is a free and non-profit gallery owned by the City of Charleston and operated by the Office of Cultural Affairs.

For further information check our SC Institutional Gallery listings, call the gallery at 843/958-6484 or visit ([www.charleston-sc.gov/citygallery](http://www.charleston-sc.gov/citygallery)).

# WELLS GALLERY



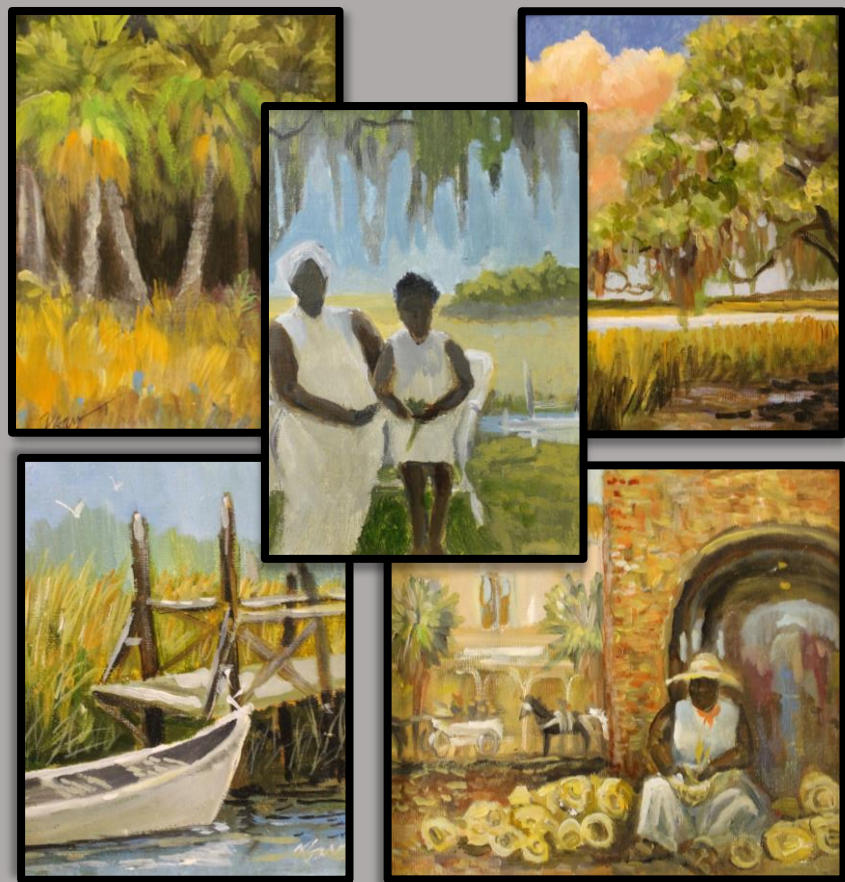
KAREN LARSON TURNER  
HUNTER MOON, 36x24, OIL ON LINEN

THE SANCTUARY AT KIAWAH ISLAND

1 SANCTUARY BEACH DR, KIAWAH, SC 29455

843.576.1290

[WWW.WELLSGALLERY.COM](http://WWW.WELLSGALLERY.COM)



## Karen Burnette Garner

Artist

Small Works Available!

at the Mt. Pleasant Mall, SC

We are on Facebook and Instagram

New works added daily!



[www.karenburnettegarner.com](http://www.karenburnettegarner.com)



The deadline each month to submit articles, photos and ads is the 24th of the month prior to the next issue. This will be Dec. 24th for the January 2018 issue and Jan. 24 for the February issue. After that, it's too late unless your exhibit runs into the next month. But don't wait for the last minute - send your info now. And where do you send that info? E-mail to ([info@carolinaarts.com](mailto:info@carolinaarts.com)).