

City of North Charleston

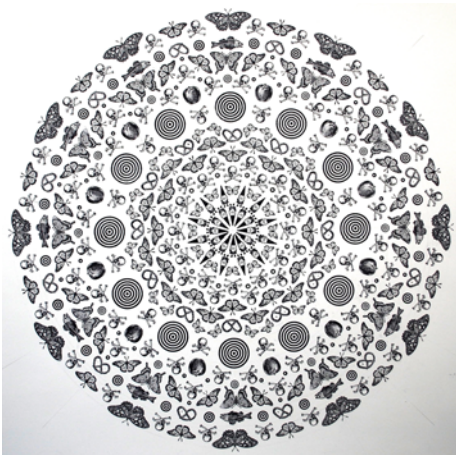
continued from Page 19 / [back Page 19](#)

ment Program, and offers residencies to North Charleston schools and community groups as the City's 2014/15 Artist-in-Residence.

In the exhibit, *Radiant Geometries*, Maryville, TN, artist, Dr. Carol Gombert, offers a unique display of hand drawn and hand stamped ink artworks on paper. The featured drawings rely on a radial structure to explore complexity and pattern formed by the application of simple rules. A number of the rubber stamp monotypes used to create his patterns take the form of mandalas, while others are derived from traditional quilt designs. The works attempt to balance opposites, relying equally on dark and light and on positive and negative shapes.

"In this little world I have created, there is symmetry, balance, and order," says Gombert, "but neither rhyme nor reason."

Gombert was born in Brimfield, OH, in 1959. He began taking painting lessons at the age of fourteen with money he earned delivering newspapers and went on to earn his BFA in Drawing from the University of Akron, his MFA in Painting from Kent State University, and his PhD in Interdisciplinary Fine Arts at Texas Tech University. Gombert has taught painting, drawing, and art history at Maryville College in Tennessee since 1993, and has exhibited in more than 200



Work by Carol Gombert

solo and group exhibitions throughout the country.

The North Charleston City Gallery is situated in the common areas of the Charleston Area Convention Center, located on Coliseum Drive in North Charleston. Parking and admission are free during regular Convention Center operating hours. Inquiries regarding the artists or purchase information may be directed to the North Charleston Cultural Arts Department.

For further information check our SC Institutional Gallery listings, call 843/740-5854 or visit (www.northcharleston.org).

Some Exhibits That Are Still On View

Our policy at *Carolina Arts* is to present a press release about an exhibit only once and then go on, but many major exhibits are on view for months. This is our effort to remind you of some of them.



Robert Rauschenberg, *The Ancient Incident* (Kabal American Zephyr), 1981. Wood- and metal stands and wood chairs, 86 1/2 x 92 x 20 inches (219.7 x 233.7 x 50.8 cm.). © Robert Rauschenberg Foundation / Licensed by VAGA, New York, New York.

Duke University in Durham, NC, is presenting *Rauschenberg: Collecting & Connecting*, featuring an ambitious exhibition originating at Duke in close collaboration with the Robert Rauschenberg Foundation in New York City, on view at The Nasher Museum of Art, Duke University Central Campus, through Jan. 11, 2015. The exhibition offers a fresh look at 34 of Rauschenberg's works spanning six decades of his career, art that he reserved in his own collection. Organized into eight sections, two gallery pavilions will feature Rauschenberg together with work by artists in the Nasher Museum's permanent collection, with special emphasis on its significant group of Russian nonconformist and conceptual art of the 1980s and 1990s, on view for the first time. For further information check our NC Institutional Gallery listings, call the Museum at 919/684-5135 or visit (www.nasher.duke.edu).



Works by Charles "Charlie" Brown

The North Carolina Pottery Center in Seagrove, NC, is presenting *A Handed Down Art: The Brown Family Potters*, featuring works by one of the South's

most significant pottery-making families, on view through Jan. 24, 2015. According to exhibit curator Stephen C. Compton, *A Handed Down Art: The Brown Family Potters* is a tribute to this family's long, unbroken, multigenerational chain of potters whose knowledge about making pottery has been passed down from family member to family member for about two centuries, and whose adaptive and innovative approach to the trade ensured its durability." For further information call the Center at 336/873.8430 or visit (www.ncpotterycenter.org).



"T.R. in Panama," by Edward Laning (American, 1906-1981) Created: 1939, Oil on fiberboard, Smithsonian American Art Museum. Gift of Mrs. Mary Fife Laning, 1984.148

The Mint Museum Uptown in Charlotte, NC, is presenting *Connecting the World: The Panama Canal at 100*, on view through Feb. 1, 2015. The exhibition, organized by the Mint is timed to coincide with the centennial of the opening of the Panama Canal in 1914, will feature a stunning selection of more than 50 works of art drawn from important collections across the country, fascinating historical ephemera, and two exciting new commissions created especially for the occasion by the internationally-renowned contemporary artist Mel Chin and the award-winning author Anthony Doerr. In addition, the exhibition will include a number of paintings by key 19th century American artists who had worked in South America, including Frederic Church and Martin Johnson Heade. It will also feature paintings by such early 20th century artists as Julien Alden Weir, Ernest Lawson, and George Bellows. For further information visit (www.mintmuseum.org).

The Greenville County Museum of Art in Greenville, SC, is presenting the exhibit, *Margaret Peery*, on view through Feb. 1, 2015. Longtime Charleston, SC, resident and artist Margaret Peery (born 1941) initially planned a career focused on objective numerals and factual data rather than such subjective elements as color and

continued on Page 22



Karen Burnette Garner ~Artist~

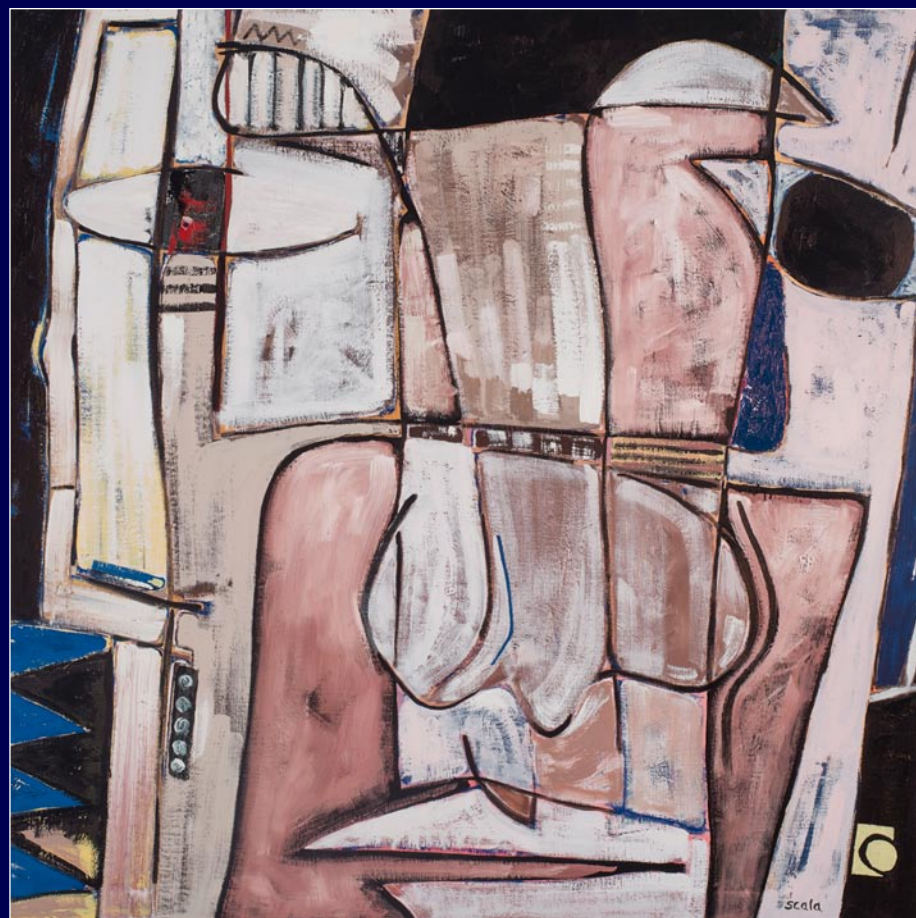
Represented by:

The Treasure Nest Art Gallery

1055 Johnnie Dodds Blvd., Suite 50
(Crickentree Village)
Mount Pleasant, SC 29464
(843) 216-1235

For the latest news and artworks, please visit
www.karenburnettegarner.com

SCALA Surrealist Painter



"Blue"

Oil on Linen

36 x 36 inches

www.peterscala.com

Studio:

843-225-3313