

NC Institutional Galleries

continued from Page 53

nual Members Exhibition." The Cary Photographers Artists (CPA) formed in January 2007 as Cary's only organization dedicated to photography as fine art. CPA is dedicated to expanding and enhancing knowledge, skill, appreciation, and sharing of both the artistry and the craftsmanship of photography. For more information about programs, outings, education, and fellowship with other photographers. **Cary Arts Center Principal's Hall, Nov. 19 - Jan. 24, 2025** - "Pastel Works by Joel Sobelson". "The approach to my work is to find a good story and tell it... with all the emotional authenticity, style and heart I can bring to the easel," says Sobelson. **Cary Arts Center Display Cases, Nov. 19 - Jan. 24, 2025** - "Linda Simpson: Metal Mania". Sculptural metal jewelry becomes dynamic wearable art. Small objects, tools, and utensils of iron and sheet metals are forged into art. Hours: Mon.-Thur., 9am-10pm & Fri.-Sat., 9am-11pm. Contact: 919/469-4069 or at (www.townofcary.org).

Cary Gallery of Artists, 200 S Academy St, Ste 120, Ashworth Square, Cary. Ongoing - The gallery offers high quality art in a variety of styles. Paintings, pencil and colored pencil artwork varies from traditional still lifes and landscapes to abstracts. Portraits of people or animals are available. Photographic work captures magnificent landscapes, small moments in life, portraits, and far away places. The pottery and clay art includes edgy handbuilt pieces, thought-provoking sculpted masks, and decorative and functional pottery that captures images of nature. Our jewelry artists provide a wide range of hand-crafted necklaces, earrings, bracelets and other ornaments from metals, stones, beads and fused glass. Our glass artist creates stained glass hangings, custom stained glass windows and fused glass art. You can also find unusual hand-made books and hand-painted porcelain both antique and new. Hours: Wed.&Thur., 11am-3pm and Fri.&Sat., 11am-5:30pm. Contact: 919/462-2035 or at (www.carygalleryofartists.org).

Herbert Young Community Center, 101 Wilkinson Avenue, Cary. Nov. 5 - 17 - "Red Ribbon Student Poster Show". Each year area middle school students express their creativity during Red Ribbon Week by creating posters that help promote drug and alcohol awareness. This program is a joint sponsorship of the Cary Parks, Recreation & Cultural Resources Department and the Cary Police Department. **Nov. 20 - Feb. 9, 2025** - "Bonnie Brooks". Brooks is a visual & NFT artist doing detailed paintings to full abstraction. She has a Master of Fine Arts and has been an artist for over 40 years. She is a traditional artist, painting mostly in oil on canvas. She does detailed, realistic landscapes which take her 3 to 18 months to complete, painting an inch an hour. She also does acrylic abstracts that are more relaxed and freer. Her abstracts are her stress relief paintings using oil and water with acrylics with up to a gallon of paint using palette knives. Her abstract art moves and flows with unique qualities. The best art doesn't tell your mind what to think but frees your mind in new ways. Hours: Mon.-Fri., 9am-10pm; and Sat., 9am-6pm. Contact: 919/4604965 or (www.townofcary.org).

Page-Walker Arts & History Center, 119 Ambassador Loop, Cary. Through Nov. 16 - "Casey Anderson: Elemental Art." Wild Bohemian Co. Clay & Decor was first created in Mebane, NC, in 2021 by husband and-wife, Casey, and Sara Anderson. Sara and Casey are both healthcare workers who during the pandemic decided to invest more time into the hobbies they loved. What started as a small side project to combine Sara's love of jewelry making and Casey's talent working with clay has grown into an exciting small business specializing in award winning crystalline pottery. **Through Nov. 16** - "Studio Art Quilt Associates (SAQA): Reflections". The exhibition features art quilts created by SAQA members that reflect the rich and diverse worlds of Virginia and North Carolina: the colors, shapes, textures, natural environments, structures, and cultures. All within an 18" by 18" format. **Nov. 20 - Jan. 4, 2025** - "Fine Arts League of Cary (FALC) Annual Members' Exhibition". A reception will be held on Dec. 1, from 2-4pm. Celebrate the arts in Cary with members of the Fine Arts League of Cary as they showcase their talents in this annual art exhibition which brings together a wide range of styles, imagery, and techniques. **Nov. 20 - Jan. 4, 2025** - "Ralph Souder: Creations in Wood". A reception will be held on Dec. 1, from 1-3pm. "I am a wood turner. I work with exotic woods from all over the United States; from Alaskan Birch to Mesquite from Las Vegas. I particularly love working with large burls. I enjoy creating large bowls, hollow forms and platters, as well as small spirit forms," said Souder. Hours: Mon.-Thur., 10am-9:30pm; Fri., 10am-5pm; & Sat., 10am-1pm. (It is strongly advised that you call ahead about hours this space will be open.) Contact: 919/460-4963.

Town Hall Gallery, City of Cary Town Hall, 316 North Academy Street, Cary. Nov. 20 - Feb. 7, 2025 - "Haruka Masuda". "The way I express my Art is called "KATAZOME", which is originally derived from the traditional technique of dyeing Japanese kimono. Using special carved paper called "KATAGAMI", I can express the intricate lines and patterns finely and repeatedly. Furthermore, KATAZOME allows me to dye fabric as if many layers were weaved on a single piece of cloth. Consequently, the figurative description and abstract expression are orchestrated on the screen," says Masuda Hours: Mon.-Fri., 8am-5pm. Contact: 919/469-4061.

Chapel Hill - Carrboro

Throughout Orange County, Nov. 2 & 3 and Nov. 9 & 10 - 2024 marks the 30th year for the Orange County Artists Guild's Annual Open Studio Tour. During the first two weekends in November, more than 100 artists located throughout Orange County will be participating in this juried event and opening their studios to visitors. OCAG's Open Studio Tour is a rare opportunity for art lovers from Orange County and beyond to meet artists in their places of work, to view and purchase art directly from the artists, and in many instances to watch as artists demonstrate how they create their pieces. Studio Tour brochures and maps of participants' studios are available at the Hillsborough Gallery of Arts and other area locations or on the Guild website at (<http://www.ocagnc.org>) where a Preview Exhibit is taking place.



Michiel Carrée, Dutch, 1657-1727, "River Scene with a Windmill," c. 1675-85, pen and brush in brown ink over traces of black chalk on paper, 6 3/8 x 9 3/4 in. (16.2 x 24.7cm). The Peck Collection, 2027.1.17.

Ackland Art Museum, UNC - Chapel Hill, Columbia & Franklin Streets, Chapel Hill. Through Jan. 5, 2025 - "Dürer to Matisse: 400 Years of European Prints". The exhibition offers an exceptional opportunity to view nearly 100 prints by some of the most recognized artists active from the late fifteenth century to the mid-twentieth century, beginning and ending with two towering giants of printmaking—Albrecht Dürer and Henri Matisse. The Ackland Art Museum holds North Carolina's largest and most comprehensive collections of art on paper, but due to light sensitivity, these works can only be displayed for short periods. Works by Rembrandt van Rijn, Giovanni Battista Piranesi, Francisco de Goya, Edgar Degas, Mary Cassatt, Vincent van Gogh, Käthe Kollwitz, Edvard Munch, and many others, showcase the craftsmanship, expressive power, and aesthetic beauty achieved through printmaking. While a more personal selection emphasizing high quality and good condition than a comprehensive history of the medium, the prints on view do chart the progression of art historical movements from the Renaissance to Cubism and beyond, through woodcuts, engravings, etchings, aquatints, mezzotints, and lithographs. Some newly acquired and never before displayed at the Ackland, and others off view for decades, these prints reveal how the use of black ink, paper, and various printmaking techniques can create a wealth of innovative and technically stunning works of art. **Through Nov. 10** - "Focus on the Peck Collection: Imagined Landscapes". Before the emergence of landscape as its own subject in Europe during the late sixteenth century, medieval and Renaissance artists crafted fantastical landscape backdrops for biblical and mythological subjects. Though artists in the seventeenth century, particularly in the Netherlands, increasingly studied the natural world and recorded existing views of their surrounding environments, painters and draftsmen often reordered, refashioned, or completely transformed observed elements, creating picturesque scenes that were conceived rather than experienced. This Focus on the Peck Collection installation presents three seventeenth-century drawings whose topographical specificity, atmospheric realism, and pictorial plausibility make it difficult to distinguish reality from imagination. **Permanent Collection Galleries, Through Dec. 31, 2025** - At any one time, there are about 250 works of art from the Ackland's distinguished permanent collection on view. The displays cover many eras and cultures, including most of the Museum's collection areas: the Ancient Mediterranean, Africa, Asia, the Americas, and Europe. Occasional galleries present small selections of prints, drawings,

photographs, and other light-sensitive works. You can search our online collection database and filter by works on view. Try saving your own collection of objects using the new "favorites" function! **Museum Store Gallery** (Franklin and Columbia Street), Store hours: Mon.-Sat., 10am-5:30pm & Sun., noon-5pm. Museum Hours: Wed.-Sat., 1-5pm. Contact: 919/966-5736 or at (www.ackland.org).

FRANK, 370 E Main St. Carrboro, Carrboro's East Main Square, next to Hickory Tavern and the Hampton by Hilton hotel, Chapel Hill. Through Nov. 9 - "Light Gestures Exhibition," part of the CLICK! Photo Festival 2024, featuring works by Ashlie Johnson Coggins, Peter Filene, Dan Gottlieb, and Barbara Tyroler. **Ongoing** - Featuring work from over 70 artists, Frank offers more than you'd expect from an art gallery. Frank is a collective, founded by the area's finest artists working together to open the door for creative innovation in the arts. Hours: Tue.-Sat., noon-5pm or by appt. Contact: Contact: 919/636-4135 or at (www.frankisart.com).

The ArtsCenter, 300-G East Main Street, Carrboro. Ongoing - Nurturing the arts in the triangle since 1974 through performance, education and exhibition. Hours: Mon.-Fri., 9am-9pm and Sat. 10am-5pm. Contact: 919/929-2787 or at (<http://artscenterlive.org>).

The Sonja Haynes Stone Center for Black Culture and History, UNC-Chapel Hill, 150 South Road, Chapel Hill. Ongoing - Dedicated in 2004, the Sonja Haynes Stone Center houses classrooms, a library, an art gallery and museum, an auditorium, and a dance studio. More than ninety-five percent of the Center's cost was met through private gifts, contributed by more than fifteen-hundred donors. Hours: Mon.-Fri., 8am-5pm. Contact: 919/962-9001, e-mail to (stonecenter@unc.edu) or visit (<http://sonjahaynesstonectr.unc.edu/>).

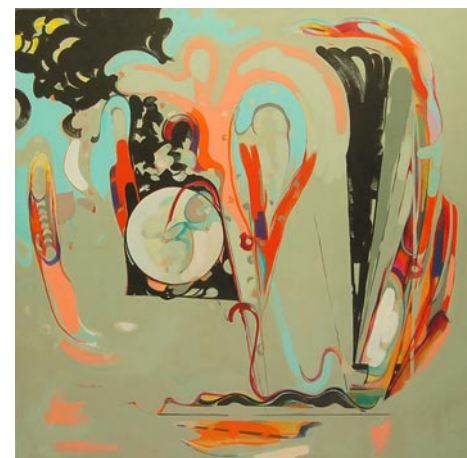
ALTERNATE ART SPACES - Chapel Hill Horace Williams House, 610 E. Rosemary Street, Chapel Hill. Ongoing - The Horace Williams House is the only historic house open to the public in Chapel Hill. The house retains its original architecture including woodwork, floors, ceilings, and mantles. They have a collection of antique furniture, including a set of four chairs and a newly acquired settee that once belonged to Horace Williams. They offer self-guided tours of the house, including an exhibit about the history of those who lived there. They also have a number of self-guided walking tours of the surrounding community, which you can pick up free of charge at the Horace Williams House. Explore the historic district along East Franklin Street, wander the Old Chapel Hill Cemetery, and more. Hours: Thur. & Fri., noon-4pm and Sun., 2-5pm. Contact: 919/245-4320 or e-mail to (info@visit-chapelhill.org).

Charlotte Area

South End Art Gallery Crawl - From 5-8pm on the 1st Friday of each month.

Bechtler Museum of Modern Art, Levine Center for the Arts, 420 South Tryon St., Charlotte. Through Jan. 20, 2025 - "Clare Rojas: Past the Present". Over the past twenty years, Clare Rojas (b. 1976) has developed a multifaceted art practice that draws on a wide range of inspirations, from ecofeminism to diverse literary and musical sources, the folklore of her Peruvian ancestry, the crisp formalism of 20th-century abstraction, and the fantastical spirit of Surrealism, which she has shaped into her own unique visual vocabulary. Clare Rojas: Past the Present features nearly 100 examples of the artist's work from the past five years, including large-scale and intimate paintings, bronze sculptures, works on paper, and an installation of wallpaper designed in collaboration with Schumacher x Peg Norriss. While Rojas has veered between abstraction and magical realist figuration throughout her career, the compelling recent work included in this exhibition deftly conjoins these modes of artmaking in compositions that center female empowerment and that marry an exploration of the legacies—and lacunae—of modernism with contemporary experience, confronting issues surrounding representation, the fragile state of the environment, and the patterns of everyday life. The exhibition launches the Bechtler Museum's 15th anniversary celebration, and with it, a year of exhibitions and programs dedicated to important female artists of the modern and contemporary periods. **Through Mar. 3, 2025** - "Chance Encounters: Surrealism Then and Now." Surrealism was an artistic and literary movement formed in Paris in 1924 that emphasized the fantastical, dream imagery, and subconscious thought. Privileging experimentation and uninhibited modes of expression, Surrealism produced radical new techniques and visual forms that continue to inspire artists today. Celebrating the 100th anniversary of the publication of the Surreal-

ist Manifesto, the Bechtler's new exhibition, *Chance Encounters: Surrealism Then and Now*, pairs examples of historical Surrealism from the museum's collection with works by contemporary artists whose practices extend the legacies of Surrealist exploration. Paying tribute to the inclusive and international scope of the movement, the exhibition includes Max Ernst, Meret Oppenheim, Rufino Tamayo, alongside Heri Dono and Naudine Pierre, and includes loans from local private and public collections. **Ongoing** - The Bechtler Museum of Modern Art is named after the family of Andreas Bechtler, a Charlotte resident and native of Switzerland who assembled and inherited a collection of more than 1,400 artworks created by major figures of 20th-century modernism and donated it to the public trust. The Bechtler collection comprises artworks by seminal figures such as Alberto Giacometti, Joan Miro, Jean Tinguely, Max Ernst, Andy Warhol, Alexander Calder, Le Corbusier, Sol LeWitt, Edgar Degas, Nicolas de Stael, Barbara Hepworth and Picasso. Only a handful of the artworks in the Bechtler collection have been on public view in the United States. Admission: Yes. Hours: Mon., Wed.-Sat., 10am-5pm; Sun. noon-5pm; and open until 9pm the 1st. and 3rd. Fri. of each month. Contact: 704/353-9200 or at (www.bechtler.org).



Work by Marge Loudon Moody

Bill and Patty Gorelick Gallery, at Central Piedmont Community College's Cato Campus, Cato III, 8120 Grier Road, Charlotte. Through Dec. 31 - "Intangible Words," featuring works by Marge Loudon Moody. Moody is a Professor Emerita of Winthrop University in Rock Hill, SC where she taught for over 30 years. Widely exhibited both nationally and internationally Moody's work exists in private and public collections worldwide. "Intangible Words" broadly investigates environments inspired by Moody's travels and imaginations. Through the use of bright colors, abstract forms and continuous reworking of the composition, Moody creates the "essential" feeling of certain environments. Non-representational imagery utilizes the "essential" nature in order to illuminate the unseen or intangible spirit of the subject. "Subject matter may serve as metaphor for intangible ideas. The work examines boundaries, addresses the fragility of existence, of presence, of absence, and of memory," says Moody. Moody will also serve as this year's Juror for Central Piedmont's "2024 Annual Juried Student Art Show". Hours: open while campus is open, but reservations help us alert our security team to visitors, provide directions to the galleries, and COVID-19 security protocol instructions to the visitors. Contact: 704/330-6869 or e-mail to (foundation@cpcc.edu) to schedule an appointment. For directions to Central Piedmont's campuses, visit (cpcc.edu/locations).

Bill and Patty Gorelick Gallery, at Central Piedmont Community College's Central Campus, North Classroom, 1320 Sam Ryburn Walk, Charlotte. Through Dec. 31 - "Archival Photos Reimagined," featuring works by Central Piedmont Students and Staff. In a joint effort between the Central Piedmont Archives and Art Galleries, students and staff came together to recreate photographs from the Central Piedmont Archives. Using the photographs as inspiration, each participant artistically reimagined a selected photograph using any media of their choice. The Gorelick Galleries will exhibit this collection of works on Cato, Levine and Central Campuses as part of a traveling exhibition series. With an emphasis on College history and student engagement the exhibition celebrates the some of the best moments in the College's history and in turn shines the spotlight back on students. Hours: open while campus is open, but reservations help us alert our security team to visitors, provide directions to the galleries, and COVID-19 security protocol instructions to the visitors. Contact: 704/330-6869 or e-mail to (foundation@cpcc.edu) to schedule an appointment. For directions to Central Piedmont's campuses, visit (cpcc.edu/locations).

Bill and Patty Gorelick Gallery, at Central Piedmont Community College's Harper Campus, Harper IV, 315 W. Hebron St., Charlotte. Through Dec. 31 - "A Journey Through Life",

continued on Page 55