

Charleston Crafts Cooperative

continued from Page 4 / [back to Page 4](#)

fabric or leather until something works.

Why the name Restoried? Powers' designs are centered around reuse; giving a new story to materials that have been discarded. She uses two types of leather; scrap remnants from the furniture making process or reclaimed leather which she has stripped from discarded leather bags or furniture. She strives to use every scrap, transforming those pieces into totes and from the tote's scraps, a wallet or bracelet is made, leaving only the scrap of a leather "string" she uses to tie her tags onto recycled grocery bags she uses for purchases. Powers hopes her leatherwork will make people feel good knowing it was crafted by hand here in South Carolina with a purpose of reuse in mind. Using the image of a wild horse, in her logo, honors the places they have lived,



Works by Courtney Powers

such as Corolla, NC and Hilton Head Island, SC., where wild horses have roamed.

For further information check our SC Commercial Gallery listings, call the gallery at 843/501-7522 or visit (<https://charlestoncraftsgallery.com/>).

Dare Gallery in Charleston, SC, Features Works by Brenda Orcutt

Dare Gallery in Charleston, SC, will present *BLOOM*, palette knife painting by Brenda Orcutt, from Nov. 3 - 24, 2023. A reception will be held on Nov. 3, from 5-8pm.

As we celebrate the beauty of nature in full bloom, we are happy to announce the opening reception for the latest exhibition at Dare Gallery featuring palette knife paintings by Brenda Orcutt. This showcase will appeal to both art enthusiasts and flower enthusiasts alike. Paintings will include still life pieces of fresh cut flowers and sprawling fields of wildflowers that convey both the delicacy and the strength of these natural wonders. Join us for insightful conversations with the artist, gain a deeper understanding of her creative process, and discover the stories that inspired each painting.

Orcutt captures the essence and vibrancy of flowers using the palette knife as her preferred method to apply and move oil on the canvas. With bold strokes and intricate details, the paintings breathe life into each blossom, with an explosion of color and texture. Each painting serves as a gentle reminder to cherish and appreciate the peaceful and fleeting moments of nature's



Work by Brenda Orcutt artist.

The Charleston Gallery Association First Friday Artwalk; a long standing, popular and very special event where neighbors and visitors to the area connect and celebrate the incredible talent within our community. Don't miss this opportunity to immerse yourself in Brenda Orcutt's captivating world of palette knife paintings and experience the majesty of flowers, fields and other vistas in all their glory.

For further information check our SC Commercial Gallery listings, call the gallery at 843/853-5002 or visit (www.daregallery.net).

Editorial Commentary

continued from Page 4 / [back to Page 4](#)

what I can tell you about an artist named Jim Bean (not a real artist) I might not know who it is, even if you saw them mentioned in an issue of our publication. There are thousands of names of artists mentioned in every issue and I don't know them all - I may never even remember typing their name in our last issue. It all depends on how active they are and what info was included in an article about an exhibit. If you're lucky it's an artist who has been very active and has

been mentioned many times over the years in our publication. I've got a pretty good memory about our publication, but not an IBM computer memory.

I hope it's easier to find something in *Carolina Arts* than on your feed on Facebook. At least we're more focused on the visual arts taking place in both North and South Carolina. I have no idea where a lot of the things in my Facebook feed come from or why they are on my feed. Go figure.

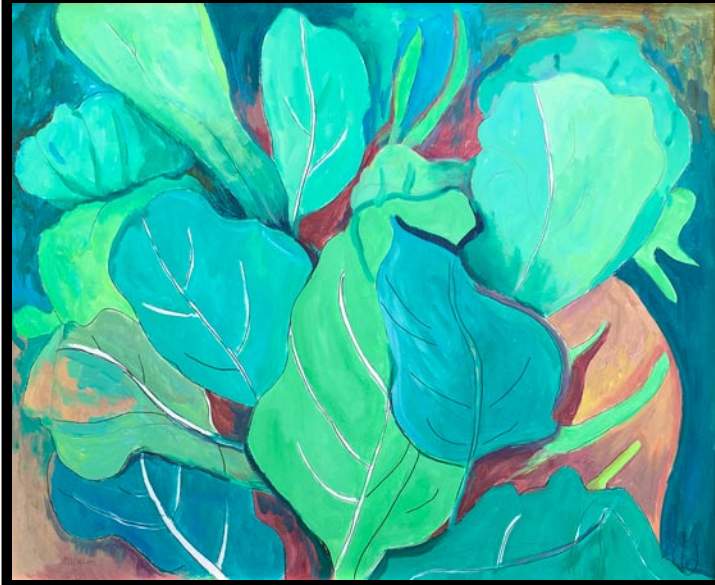


Visit
Carolina Arts
on Facebook

Go to this [link](#) and
"like" us!



Halsey - McCallum Studio William Halsey & Corrie McCallum



Painting by Corrie McCallum

Paintings
Graphics
& Sculpture for
the discerning
collector

Both artists are
recipients
of the
Elizabeth O'Neill
Verner Award



Duo by William Halsey, oil on paper, 11 x 15 inches

For information: David Halsey • 843.813.7542 • dhalsey917@comcast.net



K A R Y N H E A L E Y A R T



[Karyn Healey Art Pet Trix](#) • Summerville SC