

# NC Institutional Galleries

continued from Page 46

**Hands Gallery**, 543 West King Street, Boone. **Ongoing** - What began as the dream of a small group of craftspeople in 1975 continues today in a very personal and continually-changing environment. The history of Hands Gallery Co-op is as varied and intriguing as the artists who have come and gone over the years. Dozens of artisans have explored the business opportunities Hands has given their work, while donating time and ideas to the growth and success of the gallery. Today, the co-op serves as a role model for arts and crafts co-ops throughout the Southeastern US. Hours: daily, 10am-6pm, except Thanksgiving & Christmas. Contact: 828-262-1970 or at (<http://www.handsgallery.org/>).

**King Street Art Collective**, Watauga Arts Council, 585 West King Street, (above Doe Ridge Pottery) Boone. **Ongoing** - A gallery and interactive art space with changing exhibits and activities celebrating the arts. Hours: Thur., 11am-5pm; Fri.-Sat., 10am-6pm; and Sun., 10am-2pm. Contact: 828-264-1789 or at (<https://www.watauga-arts.org/kingstreetart.html#/>).

**Turchin Center for the Visual Arts**, Appalachian State University, 423 West King Street, Boone. **Mayer Gallery, Through Nov. 4** - "Memento Mori: Death and the Art of Living," featuring works by Larassa Kabel. Exploring that which makes us most uncomfortable, Larassa Kabel explores the emotional and intellectual space between life and death, love and loss. Through drawing, painting, performance, and sculpture, she confronts our view of ourselves "outside of Nature" and our desire to distance ourselves from our mortality. **Hodges, Bickers and Community Galleries, Through Dec. 2** - "Passage / Time Pieces". "Passage" is an installation of live music by Michael Harrison with musicians Elliot Cole, Ina Filip, and Benoit Roland, with lighting by Nina Elder, in partnership with "Time Pieces", featuring drawings by Nina Elder. "Passage" and "Time Pieces" are closely related but separate installations originally conceived by composer and performer Michael Harrison and artist Nina Elder. The immersive debut installation, "Passage", interprets Earth's light and dark, using illumination and shadow to simulate cosmic movements. In collaboration with composer/performers Elliot Cole, Ina Filip, and Benoit Roland, Michael Harrison presents an interactive performative artwork that responds to the passage of one day of celestial and human time. In addition to designing the lighting for Passage, Nina Elder created the exquisite graphite drawings in Time Pieces – contemplations on the physical texture of time and the potential for transformation. **Gallery A and Petti/Peiser Galleries, Through Nov. 4** - "Circular Solutions: CENTER Award + Grant Recipients 2021 & 2022". Founded in Santa Fe, New Mexico, the not-for-profit organization CENTER supports social and environmentally engaged lens-based projects through education, public platforms, funding, and partnerships. Image-making holds a unique power to confront audiences with uncomfortable truths, advance cultural understandings, and promote social justice. Through the advancement of artists and their work, CENTER serves to deepen public understanding of lens-based media's complex history and ongoing cultural significance. By establishing trans-disciplinary partnerships between artists and justice-driven communities, historians, cultural critics, students, and the art world, CENTER advances projects that respect all people, open minds, and engage our shared humanity.

Hours: Mon.-Thur., 10am-6pm; Fri., noon-8pm; & Sat., 10am-6pm. Contact: 828/262-3017 or at ([www.turchincenter.org](http://www.turchincenter.org/)).

## Brasstown

**Folk School Craft Shop**, John C. Campbell Folk School, Olive D. Campbell Building, Brasstown. **Ongoing** - The shop represents more than 300 juried craftspeople and features an impressive collection of traditional and contemporary Appalachian craft, including jewelry, pottery, wood, fiber, ironwork, basketry and other disciplines. You'll find marquetry earrings, clay serving platters, turned-wood bowls, functional fireplace poker sets and many more unique items. The shop is also proud to be the home of the world-renowned Brasstown Carvers. A book room houses hundreds of instructional and celebratory books on everything from basketry to writing. Buy a few art supplies or a CD from our collection of traditional Appalachian music. You can take home a Folk School t-shirt, hat or bag as a souvenir. Find the perfect scenic postcard to tell everyone back home about your visit to the Folk School. Hours: Mon.-Sat., 8am-5pm; Thur. til 6pm and Sun., 1-5pm. Contact: 800/365-5724 or at ([www.folkschool.org](http://www.folkschool.org)).

## Brevard

**Number 7 Fine Arts and Crafts Gallery**, 2 West Main Street, historic McMinn building, Brevard. **Ongoing** - A Fine Arts and Fine Crafts cooperative featuring the juried works of 22 of Transylvania County's finest artists and craftspeople. New works on display daily. Hours: Mon.-Sat., 10am-5pm. Contact: 828/883-2294 or at ([www.number7arts.com](http://www.number7arts.com)).

## Burlington

**Point of View Gallery**, 717 Chapel Hill Road, Burlington. **Ongoing** - Featuring works by member artists: Kathy Alderman, Frances Baker, India Cain, John Dodson, Steven Durland, Debra Farmer, Bill Ferree, Brenda Garner, Wendy Gellert, Michael Kennedy, Cheryl Knox, Peggy McCormick, Jacqueline Mehring, Christine Seiler, Lane Watson, and Rose Wenkel. Hours: Mon.-Fri., 10am-5pm and Sat. & Sun., 1-5pm. Contact: 336/270-4998 or at ([www.PointOfViewGallery.com](http://www.PointOfViewGallery.com)).

## Burnsville

**Throughout Mitchell and Yancey Counties, Nov. 10 - 12, 2023, from 10am-5pm** - "2023 Toe River Arts Fall Studio Tour". This driving tour through Mitchell and Yancey Counties will take visitors along the meandering Toe River, across its many bridges, around barns, acres of fields, and miles of forests all while visiting the talented studio artists and galleries participating. For more information about the Studio Tour, visit the website at ([www.toeriverarts.org](http://www.toeriverarts.org)) or call 828/682-7215 (Burnsville) or 828/765-0520 (Spruce Pine).

**Burnsville Gallery**, Toe River Arts Council, 102 W. Main St., Burnsville. **Ongoing** - Featuring works by artists from Mitchell and Yancey Counties sponsored by the Toe River Arts Council. Hours: Tue.-Sat., 10:30am-5pm. Contact: 828/682-7215 or at ([www.toeriverarts.org](http://www.toeriverarts.org)).

## Cary

**Throughout Cary, Final Friday of the Month, from 6-8pm** - "Cary Art Loop," featuring an evening tour of art spaces in Cary held on the final Friday of the month. Take the C-Tran to the Cary Art Loop! The free bus will make stops at Coffee and Crepes, Studio 180 Salon, Ashworth Village, Cary Arts Center and Page-Walker Arts & History Center/Cary Town Hall. Contact: ([www.caryartloop.org](http://www.caryartloop.org)).

**Bond Park Community Center**, 150 Metro Park Drive, Cary. **Through Jan. 14, 2024** - "Ari Ferro: Impressions from Nature". Ferro aims to capture the tranquility of nature and invite viewers to slow down and connect with the beauty of light and shadow. Inspiration for these oil paintings comes from places he has visited across the country, most recently a wilderness area in Wyoming. Hours: Mon.-Fri., 9am-10pm and Sat., 9am-6pm. Contact: 919/462-3970 or at ([www.townofcary.org](http://www.townofcary.org)).



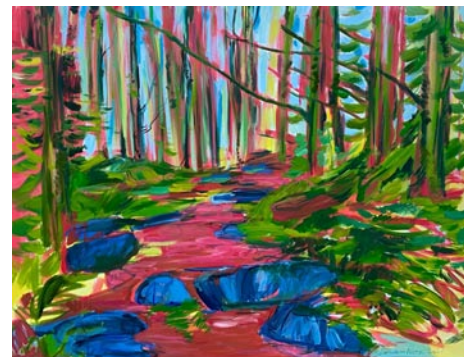
Work by Michael Andrews

**Cary Arts Center**, 101 Dry Avenue, Cary. **Cary Arts Center Gallery, Through Nov. 19** - "Jason Pak Swienckowska: A temple we built for ourselves". Mixed Artist Jason Pak Swienckowski curates an exhibition that includes artists: Jax Yao, Kai Cho, Lars Shimabukuro, and Monica Jon to present an immersive exhibition they describe as "A temple is designed as a place dedicated to the service or worship of a deity. Our show seeks to dedicate this space to the service and worship of those among the Asian diaspora and beyond. We artists have gathered to share work seeking to digest and dissect the complex emotional turmoil related to our identity as Asian Americans. A collection of objects dedicated towards healing, honoring, and respecting ourselves. We invite the public to hold reverence for each other in this space and celebrate our past, present and future selves." **Through Jan. 21, 2024** - "Resilience – The Heart of Ukraine – Photographs by Michael Andrews". As a volunteer with United States Peace Corps Ukraine in 2018 and 19, Andrews augmented his service as consultant to an HIV and AIDS service agency working as a photographer for the Baba Yelka Cultural Expedition. The Ukrainian group was formed in 2018 to preserve and share the unique cultural traditions of Ukraine's Kirovohod region

-- stories, songs, recipes and material culture. Resilience offers a unique window into remote village life before Russia's invasion and celebrates the lives of Ukrainian "babusyas" (grandmothers) and their cultural roots. **Nov. 22 - Jan. 22** - "Cary Photographic Artists Annual Members Exhibition". A reception will be held on Dec. 2, from 2-4pm. **Cary Arts Center Display Cases, Through Jan. 21, 2024** - "JoAnna Vitale: Art Glass Connection - Fused, Stained & Mosaics". Vitale's passion for glass has been a journey from studio glass sales to teaching different glass techniques. She brings a wealth of knowledge to her studio teaching at the Cary Arts Center. This show shows techniques in fused, stained and mosaic glass creations. Hours: Mon.-Thur., 9am-10pm & Fri.-Sat., 9am-11pm. Contact: 919/469-4069 or at ([www.townofcary.org](http://www.townofcary.org)).

**Cary Gallery of Artists**, 200 S Academy St, Ste 120, Ashworth Square, Cary. **Ongoing** - The gallery offers high quality art in a variety of styles. Paintings, pencil and colored pencil artwork varies from traditional still lifes and landscapes to abstracts. Portraits of people or animals are available. Photographic work captures magnificent landscapes, small moments in life, portraits, and far away places. The pottery and clay art includes edgy handbuilt pieces, thought-provoking sculpted masks, and decorative and functional pottery that captures images of nature. Our jewelry artists provide a wide range of hand-crafted necklaces, earrings, bracelets and other ornaments from metals, stones, beads and fused glass. Our glass artist creates stained glass hangings, custom stained glass windows and fused glass art. You can also find unusual hand-made books and hand-painted porcelain both antique and new. Hours: Wed.&Thur., 11am-3pm and Fri.&Sat., 11am-5:30pm. Contact: 919/462-2035 or at ([www.carygalleryofartists.org](http://www.carygalleryofartists.org)).

**Page-Walker Arts & History Center**, 119 Ambassador Loop, Cary. **Through Nov. 4** - "Charles Philip Brooks". The tradition of Tonalist painting is one of intimate and nuisance-filled art. Charles Philip Brooks returns to the roots of Tonalist landscapes with an emotive series of poetic and pastoral subjects including dark moonlit nights, rustic burning sunsets and wild seas. The artist's confident painterly craft is deeply rooted in historic tradition. **Through Nov. 4** - "Jamie Hansen: Serendipity". Cary native Jamie Hansen began painting as a child and attended classes at the Cary Arts Center. She studied fine art in the US and Germany and creates large scale watercolor art that is saturated with color and rich with detail. Her current series of work explores stories and connections created through shared musicmaking. Married to a musician, Jamie's art documents arrangements of concerts and rooms full of musical instruments. In her work, shapes meet each other in staccato notes, mingle in triads and overtones, and then decrescendo to soft whispers. The capricious nature of the watercolor medium helps translate the vibrant immediacy of live music into visual art. **Through Nov. 4** - "Junhong Ma: Tea and Coffee". The exhibit displays some of her most unique and well-loved tea sets and mugs. Having grown up in China before settling here, Jun has two different cultural backgrounds that start a day with a cup of tea, and / or a cup of coffee. Through her pottery, she creates functional vessels that work for either. Her colorful works bring together these two backgrounds in her own unique way. **Nov. 8 - Dec. 30** - "Fine Arts League of Cary Annual Member's Show". A reception will be held on Nov. 19, from 2-4pm. Celebrate the arts in Cary with members of the Fine Arts League of Cary as they showcase their talents in this annual art exhibition which brings together a wide range of styles, imagery, and techniques. **Nov. 8 - Dec. 30** - "Triangle Book Arts: Creative Explorations". A reception will be held on Nov. 19, from 2-4pm. Mixed Triangle Book Arts is a grassroots collective of artists in the greater NC Triangle. Their creative explorations include bookbinding, artists' books, printmaking and printing, papermaking, zines, calligraphy – followed by a hearty et cetera. Check out their artwork in this inventive display. Hours: Mon.-Thur., 10am-9:30pm; Fri., 10am-5pm; & Sat., 10am-1pm. (It is strongly advised that you call ahead about hours this space will be open.) Contact: 919/460-4963.



Work by Karen Rose

**Town Hall Gallery**, City of Cary Town Hall, 316 North Academy Street, Cary. **Through Nov. 10** - "Karen Rose: Mountains to the Sea Trail." Karen Rose has been a painter for over 30 years in New York City, San Francisco, and Raleigh. She

has recently been creating a series of paintings based on the North Carolina Mountains to Sea Trail, having hiked, biked, and kayaked different portions of the trail. She has been simultaneously painting a series of landscapes on both sides of the Mexican border, with the notion that landscapes transcend borders. Her identity and heritage straddle these places, as a half-Mexican. Her propensity for intense color is a by-product of this culture. As a longtime resident of North Carolina, she is also interested in plants such as the prickly pear cactus and yucca that are indigenous to both North Carolina and Mexico. Hours: Mon.-Fri., 8am-5pm. Contact: 919/469-4061.

## Chapel Hill - Carrboro



Elsa María Meléndez, "Milk" canvas with silk-screen, embroidery, ink, and other textiles, 2020

**Ackland Art Museum, UNC - Chapel Hill**, Columbia & Franklin Streets, Chapel Hill. **Nov. 3 - Jan. 21, 2024** - "The Outwin: American Portraiture Today". Launched in 2006 to support the next wave of contemporary portraiture in the United States, the National Portrait Gallery's celebrated Outwin Boochever Portrait Competition is a major survey of the best of American portraiture. Held every three years, and now in its sixth edition, "The Outwin: American Portraiture Today" presents forty-two works - selected from over 2,700 entries - foregrounding the vibrancy and relevance of portraiture now. In addition to paintings, photographs, drawings, and sculptures, The Outwin includes video, performance art, and textiles, highlighting the seemingly limitless possibilities of contemporary portraiture. **Museum Store Gallery** (Franklin and Columbia Street), Store hours: Mon.-Sat., 10am-5:30pm & Sun., noon-5pm. Museum Hours: Wed.-Sat., 1-5pm. Contact: 919/966-5736 or at ([www.ackland.org](http://www.ackland.org)).

## New Location

**FRANK**, 370 E Main St. Carrboro, Carrboro's East Main Square, next to Hickory Tavern and the Hampton on Hilton hotel, Chapel Hill. **Ongoing** - Featuring work from over 70 artists, Frank offers more than you'd expect from an art gallery. Frank is a collective, founded by the area's finest artists working together to open the door for creative innovation in the arts. Hours: Tue.-Sat., noon-5pm or by appt. Contact: 919/636-4135 or at ([www.frankisart.com](http://www.frankisart.com)).

**The ArtsCenter**, 300-G East Main Street, Carrboro. **Ongoing** - Nurturing the arts in the triangle since 1974 through performance, education and exhibition. Hours: Mon.-Fri., 9am-9pm and Sat. 10am-5pm. Contact: 919/929-2787 or at (<http://artscenterlive.org>).

## Charlotte Area

**Bechtler Museum of Modern Art**, Levine Center for the Arts, 420 South Tryon St., Charlotte. **Second Floor Gallery, Through Nov. 26** - "Art of Another Kind: Selections of Art Informel." Art Informel is a radical approach to abstraction that emerged in Europe in the years following World War II. In response to the horrors of the war, many artists rejected what they believed was realism's susceptibility to nationalistic narratives, and sought to develop a universal visual language that communicated freedom, individual expression, and inner states of being. Championing this new artistic tendency, in 1952 the French curator and art critic Michel Tapié organized the groundbreaking exhibition Un Art Autre—or Art of Another Kind—and published an accompanying catalogue, in which he coined the term "Art Informel." **Third Floor Gallery, Through Nov. 26** - "Lightness and Weight: Japanese Art from the Collection." This exhibition foregrounds work by Japanese artists in the Bechtler Museum's permanent collection, including Shikō Munakata (1903–1975), Kumi Sugaï (1919–1996), and Tetsuya Yamada (born 1968), all of whom are recognized for their innovative approaches to time-honored Japanese artmaking materials and forms. Employing bold and emotive lines, Munakata is best known for his woodblock prints that merged traditional Japanese art with a visual vocabulary influenced in part by European Post-Impressionism

continued on Page 48