

# NC Institutional Galleries

continued from Page 52

**HARRIS: Surface Expression**". Harris is an aluminum artist & sculptor living in Greensboro. The Upstairs Gallery will host "HOW I'M USING MY SOCIOLOGY DEGREE: Paintings by Jan Swanson". Swanson is a self-taught artist with a sociology degree from Clemson. The Hallway Gallery will feature a first-time exhibit by artist Katie Holden titled "New Beginnings". Holden approaches her art as a way to express the struggles she has undergone in her life. The Kaleidoscope Youth Gallery is hosting the "Annual Elementary Art Exhibit" with art work from the students of many of our Guilford County elementary schools. A reception will be held on Nov. 16, from 5:30-7:30pm. Hours: Tue.-Sat., noon-5pm. Contact: 336/887-2137 or at ([www.tagart.org](http://www.tagart.org)).

## Hillsborough

**Downtown Hillsborough, Nov. 30, from 6-9pm** - "Hillsborough Art Walk Last Fridays". The Hillsborough Arts Council invites you to visit walkable historic and hip Hillsborough. Park once and enjoy art galleries, artist studios, boutiques and award-winning restaurants. Stops on the Hillsborough Art Walk Last Fridays include: Hillsborough Arts Council Gallery & Gift Shop, Orange County Historical Museum, Hillsborough Gallery of Arts, Hillsborough/Orange County Chamber of Commerce, Hillsborough Artists Cooperative and The Skylight Gallery, Thomas Stevens Gallery, ENO Gallery, Coldwell Banker Howard Perry and Walston, The Paynter Law Firm, Margaret Lane Gallery, K's Closet - Hillsborough and Cedar Walk Wellness Center. Contact: ([www.lastfridaysartwalk.org](http://www.lastfridaysartwalk.org)).

**The HAC Gallery**, Hillsborough Arts Council, 102 North Churton Street, across the street from the Wooden Nickel, Hillsborough. **Ongoing** - Offers a venue for emerging and mid-career artists to show and sell their work. Hours: Wed.-Sat., noon-4pm. Contact: 919/643-2500.

## Kings Mountain

**Southern Arts Society Gift Shop & Gallery**, 301 N. Piedmont Ave. (NC 216), located in the old Southern Railway Depot at the corner of Battleground Ave and N. Piedmont Ave in the Kings Mountain Art Center, Kings Mountain. **Ongoing** - Exhibits, gift shop & classes. Hours: Tue.-Sat., 10am-4pm and by appt. Contact: 704/739-5585, e-mail at ([southernartsociety@gmail.com](mailto:southernartsociety@gmail.com)) or at ([www.southernartsociety.org](http://www.southernartsociety.org)) and Facebook.

## Lenoir

**Caldwell Arts Council Gallery**, 601 College Avenue, SW, Lenoir. **Through Nov. 30** - "Double Vision: Artists in Ireland" and "Correspondence: A Postcards Show". Two exhibitions and an artist talk are coming to the Caldwell Arts Council in October! "Double Vision: Artists in Ireland" will feature artists Jean Cauthen (Charlotte NC) and Diane Pike (Denver NC). "Correspondence: A Postcards Show" is an artist invitational with each exhibiting artist creating one or two works of art utilizing a 4" x 6" substrate, with all sales of postcards artwork benefitting the Caldwell Arts Council. **Satie's Gift Shop, Ongoing** - featuring gift items made by local artists. Hours: Tue.-Fri., 9am-5pm & Sat., 10am-2pm. Contact: 828/754-2486 or at ([www.caldwellarts.com](http://www.caldwellarts.com)).

**My Happy Place Gallery**, 210 Main Street NW, Lenoir. **Ongoing** - Featuring works by local artists working in all forms of art in our cooperative gallery. We are members of the Caldwell Chamber of Commerce with its advantages. Being a member also entitles your work to be shown and sold in our satellite partnership locations at The Local Bean in Hudson and the Blue Ridge Room, the large conference room at Bo's which accommodates 40 pieces of hanging work that changes every quarter. We also partnered with the City of Hudson in helping The Hudson Art Festival which will become an annual event established just last year. We are a busy, proactive group working together to help promote the arts and encouraging each other to keep creating and growing. Hours: Tue.-Fri., 11am-7pm and Sat., 11am-3pm. Contact: call 828/572-2688 or e-mail ti ([myhappyplacegallery@gmail.com](mailto:myhappyplacegallery@gmail.com)).

## Lumberton

**Inner Peace Center for the Arts**, 700 N. Roberts Avenue, Lumberton. **Ongoing** - We are an art gallery designed to educate, enlighten, enrich and entertain patrons of all ages while providing leadership and support to advance the visual and performing arts in our community. Hours: Wed.-Fri., 11am-5pm. Contact: 910/733-1046 or at ([www.ipcars.com](http://www.ipcars.com)).



Work by Turtle Island Pottery

## Marion

Alternative Art Space - Marion **McDowell High School**, 600 McDowell High School Road, Marion. **Dec 1, 10am-4pm** - "32nd Annual Appalachian Potters Market". Collectors and holiday shoppers will find a wide array of wares suitable to expand private collections as well as for holiday gift giving. The Appalachian Potters Market provides an opportunity to see and buy a variety of both traditional and modern clay work. Admission: \$5. Contact: visit (<http://www.mcdowellarts.org/appalachian-potters-market.html>).

## Marshall

**Flow Gallery**, 14 S. Main St., Marshall. **Ongoing** - Flow is a cooperative gallery owned, operated and curated by artists, offering for sale the best of local and regional crafted objects and arts, traditional and contemporary. Hours: Tue.-Sat., 10am-4pm or by appt. Contact: 828/649-1686 or at ([www.flowmarshall.com](http://www.flowmarshall.com)).

## Mooreville

**Depot Visual Arts Center**, 103 West Center Ave., Mooreville. **Ongoing** - MAGical Gallery shop, a great source for unique gifts. Hours: Tue.-Sat., 11am-4pm. Contact: 704/663-6661 or at ([www.MAGart.org](http://www.MAGart.org)).

## Morehead City

**Carolina Artist Gallery**, 800 Evans Street, Morehead City. **Ongoing** - The co-op continues to nurture emerging artists, gives them an opportunity to show and sell their work. The Gallery enjoys a steady stream of visitors. Vacationers and local residents purchase art and gifts. Nonmember artists frequently stop in for inspiration. Hours: Tue.-Sat., 11am-5pm. Contact: 252/726-7550 or at ([www.carolinaartistgallery.com](http://www.carolinaartistgallery.com)).

## Morganton

**KATZ Arts Collective**, 116 W. Union Street, Morganton. **Ongoing** - It is a collective of artists, both online and in-house. It operates as a non-profit; any money left over after expenses goes back into the cooperative. Many different specialties including weaving, painting, photography, pottery, sculpture, and more are represented at the KATZ. Included in its amenities are a free children's area, display galleries and shelves, rental studios, and an event space. Hours: N/A. Contact: visit us on Facebook (<https://www.facebook.com/thekatzartcollective>) or e-mail us at ([thekatzartcollective@gmail.com](mailto:thekatzartcollective@gmail.com)).

## New Bern

**Community Artists Gallery & Studios, Inc.**, 504 South Front Street, New Bern. **T - F. Ongoing** - We serve Craven, Pamlico, and Jones counties. Operated by member artists themselves on an exclusively volunteer basis, it's a great place to discover distinctive, affordable art for your home or office--or to find a truly unique gift. Visit our Gallery and Studios pages to see what's currently on exhibit--and on our easels! Community Artists Gallery & Studios supports working studio space for fifteen artists and exhibits nearly a dozen additional artists at any given time. Our members are engaged in creating jewelry, photography, weaving, found object art, sculpture, ceramics, digital art, watercolor, oil, baskets, stained glass, and acrylic paintings. Hours: Tue., Thur., Fri., & Sat., 10am-4pm. Contact: 252/571-8566 or visit ([www.communityartistsgallery.org](http://www.communityartistsgallery.org)).

## Old Fort

**Arrowhead Artists and Artisans League Inc.**, 78 Catawba Avenue, Suite C-D, next to the parker hosiery building, 2 minutes from

Exit 73 on Interstate I-40, Old Fort. **Ongoing** - The main Gallery space is about 1800 square feet, with an open, industrial feel. Art, ranging from traditional to abstract and mixed media, hangs on the walls. On the main floor are displays of various types of fine crafts, such as jewelry, pottery, fiber art, hand crafted baskets, and hand turned wooden bowls. You might even see a welded "junk yard" critter or two. After viewing all of the various arts and crafts, visitors can walk through a wide archway on the right to view more fine art and craft work and talk to the artists and students in several studios and the AGS classroom. If a studio door is open, visitors are being invited to step inside and enjoy the work. Currently, our Gallery and studio artists and artisans include: Lorelle Bacon, Ann Whisenaut, Karen Piquette, David Kaylor, Dawn Driebus, Len Eskew, Wayne Stroud, Susan Taylor, Cathy Green, Anne Bevan, John Sullivan, Evelyn Chrisawn, Tim Muench, Chuck Aldridge, Charles Davis, Fredreen Bernatovicz, Anne Allison, Darlene Matzer, Billie Haney, Marguerite Welty, Jean Ryan, Kasha Baxter, Linda Magnus, Kim Hostetter, Bunnie Burgin, Sonya Russell, Helen Sullivan, Janet Bennett, and Sabrina Miller. Hours: Tue.-Sat., 10am-6pm & Sun., 1-4pm. Contact: 828/668-1100 or at (<http://arrowhead-art.org/>).

## Outer Banks Area

**Dare County Arts Council Gallery**, 300 Queen Elizabeth, Manteo. **Nov. 2 - 30** - "Daniel Pullen Photography". A reception will be held on Nov. 2, from 6-8pm. Hours: Tue.-Fri., 10am-5pm and Sat., noon-4pm. Contact: Peggy Seporito at 252/475-4843, ([www.DareArts.org](http://www.DareArts.org)) or ([www.ncwatercolor.com](http://www.ncwatercolor.com)).

## Pembroke

**A.D. Gallery**, University of NC at Pembroke, 1 University Dr, Pembroke. **Ongoing** - The A.D. Gallery is sponsored by the Art Department of the University of North Carolina at Pembroke. Serving the university and local community, the gallery provides a venue for student and faculty work, as well as that of local, regional, national and international artists. The gallery helps fulfill the department's goal of providing outstanding educational opportunities for its students by bringing quality visual arts to the university and the community at large. Hours: Mon.-Thur., 9am-5pm; Fri., 9am-3pm and Wed. evenings, 5-8pm. Contact: Dr. Nancy Palm at 910/775-4264 or e-mail to ([nancy.palm@uncp.edu](mailto:nancy.palm@uncp.edu)).

**The Museum of the Southeast American Indian**, Old Main (first floor) at the University of North Carolina Pembroke, 1 University Drive, Pembroke. **Ongoing** - As part of the Southeast American Indian Studies Program at UNC Pembroke, The Museum of the Southeast American Indian maximizes the capacity of the University to address the complex historical, cultural and contemporary issues facing American Indian communities in North Carolina and the American Southeast. The Museum's cross-disciplinary collaborations greatly enhance the University's programs of research, service, outreach and instruction. The Museum is a multi-faceted museum and resource for scholarly research and community outreach. While the Museum contains exhibits of authentic Indian artifacts, arts and crafts from Indian communities all over the Americas, our primary focus is on tribes from the American Southeast. Many items come from North Carolina Native communities, with special emphasis on Robeson County Indian people. Specific focus is placed on the largest North Carolina tribe, the Lumbee, but our outreach activities have extended into Virginia and South Carolina with plans for further outreach throughout the Southeast. Hours: Mon.-Fri., 9am-5pm. We typically close for lunch from noon-1pm. Contact: call 910/521-6282 or e-mail to ([nativemuseum@uncp.edu](mailto:nativemuseum@uncp.edu)).

ALTERNATE ART SPACES - Pembroke **Artist Market Pembroke**, at the UNCP Entrepreneurship Incubator, 202 Main Street, Pembroke. **2nd Sat. every month** - Featuring handmade art and jewelry by local artists. Hours: 10am-4pm. Contact: 910/775-4065.

## Penland

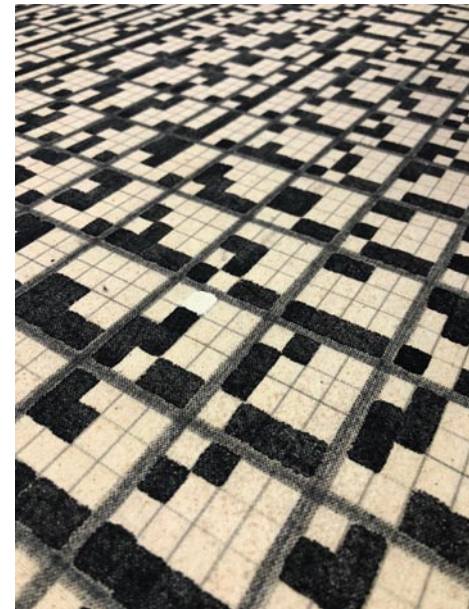
**Penland Gallery & Visitors Center**, Penland School of Crafts, 3135 Conley Ridge Rd, Penland. **Robyn & John Horn Gallery, Through Nov. 18** - "CONVERSATION / Pneuma," featuring works by Christopher Colville and Maggie Jaszczak. The exhibit is an ongoing series of exhibitions pairing two artists to create an opportunity for a deeper understanding of each of the artist's works. There is a reciprocity created by placing these works together, the notion that artworks create their own metaphorical dialog and give weight to non-material concerns. **Focus Gallery, Through Nov. 11** - "Bright House," featuring works by Eleanor Anderson and Ellie Richards. Anderson is a multi-faceted

artist unconstrained in her material choices. Richards creates contemporary wood furniture and mixed media sculpture with a fervent love of color and texture. **Ongoing** - The Penland Gallery and Visitors Center is one of the finest showcases for contemporary craft in the Southeast. The gallery exhibits and sells work by current and former Penland instructors, resident artists, and former students from around the country. A knowledgeable staff provides information about the school's programs, the artists, and studios in the area. The expanded exhibition spaces, sales gallery, and educational visitors center gallery provides a remarkable destination for visitors to Penland School and the surrounding arts community. Hours: Tue.-Sat., 10am-5pm & Sun. noon-5pm. Contact: 828/765-6211 or at (<http://penland.org/gallery/>).

## Raleigh

**Block Gallery**, 222 West Hargett Street, Raleigh. **Through Nov. 23** - "Mother, Daughters, and the Writing Life Barbara Tyroler and Elizabeth Matheson". A reception will be held on Oct. 5, from 6-8pm. Elizabeth Matheson and Barbara Tyroler use writing and photography to inspire memory and search for meaning in their latest project. With mothers and daughters as the central theme, they have extended their photographic journey with a group of writers who articulate these intimate intergenerational spaces through their essays in Mothers & Strangers, an anthology edited by Samia Serageldin and Lee Smith, to be released by UNC Press April 2019. Hours: Mon.-Fri., 8:30am-5:15pm. Contact: 919/996-3610.

**Collective Arts Gallery & Ceramic Supply**, 8801 Leadmine Road, Suite 103, Raleigh. **Ongoing** - Featuring works by local and nationally renowned artists on permanent exhibit. Hours: Tue.-Fri. 11am-7pm & Sat., 10am-6pm. Contact: 919/844-0765.



Work by Vernon Pratt

**Gregg Museum of Art & Design**, The Historic Chancellor's Residence, NC State University, located at 1903 Hillsborough Street, Raleigh. **Through Feb. 10, 2019** - "All the Possibilities of Filling In Sixteenths (65,536)", featuring a work by the late Durham artist and jazz musician Vernon Pratt (1940-2000). The exhibition is the first complete showing of a massive 256-panel work centering around Pratt's interest in systems and the variations, permutations, and the rhythms and harmonies within. At 18 feet high and 110 feet wide, it is the largest and most complex work of Pratt's ever exhibited, and has been called his "magnum opus" by Gregg Museum director Roger Manley. **First Floor Galleries of the Historic Residence, Through Nov. 25** - "Our Living Past," featuring photographs by Timothy Duffy. Photographer Timothy Duffy's wet plate collodion prints bring attention to the traditional musicians of the South. When Duffy began recording the music of folk and blues musicians for the Southern Folklife Collection at UNC Chapel Hill, he discovered many of them living in poverty, despite their significant contributions to American musical history. This inspired Duffy to found the Music Maker Relief Foundation, a nonprofit organization dedicated to helping to sustain elderly musicians while preserving their music. The Foundation, based in Hillsborough, NC, has supported nearly four hundred artists by helping them pay for medicines, meet mortgage payments, buy new instruments, find gigs, and gain long-overdue recognition for their great contributions. Duffy's wet plate photographic technique, which dates back to the mid-19th century, reveals the strong individual personalities that continue to keep the roots of American music alive. **Adams and Woodson Galleries, Through Dec. 30** - "RURAL AVANT-GARDE - THE MOUNTAIN LAKE EXPERIENCE". Painting with fire, dancing in ink, or exploiting decomposition, artists such as composer John Cage, choreographer Merce Cunningham, poet/ceramicist M.C. Richards, photographer Sally Mann came to Virginia's Mountain Lake for a series of art experiments in-

continued on Page 54