



Work by Earl B. Lewis

watercolors to the neighbors. **Ongoing** - Featuring original works by regular gallery artists: Marty Whaley Adams, David Ballew, Joseph Cave, Dan Cooper, Claire Farrell, Bill Gallen, Gary Gowans, Gary Grier, David Goldhagen, Russell Gordon, Glenn Harrington, E.B. Lewis, Whitney Krebs, Kate Long, Brad Lorbach, George Pate, Sue Stewart, Karen Larson Turner, Alex Zapata. Hours - Mon.-Sat., 10am-6pm. Contact: 843/853-3233 or at ([www.wellsgallery.com](http://www.wellsgallery.com)).

**Wells Gallery at The Sanctuary**, at The Sanctuary on Kiawah Island, about 30 minutes from Charleston, in Kiawah's newest and most luxurious resort. **Ongoing** - Featuring a selection of paintings, jewelry and sculptures of some of the Lowcountry's finest artists, Betty Anglin Smith, Shannon Smith, Jennifer Smith Rogers, George Pate, Glenn Harrington, Gary Gowans, Karen Larson Turner, Kim English, Felice Killian, Grainger McKoy and Darrell Davis. Hours: Mon.-Sat., 10am-8pm & Sun., 10am-6pm. Contact: 843/576-1290 or at ([www.wellsgallery.com](http://www.wellsgallery.com)).

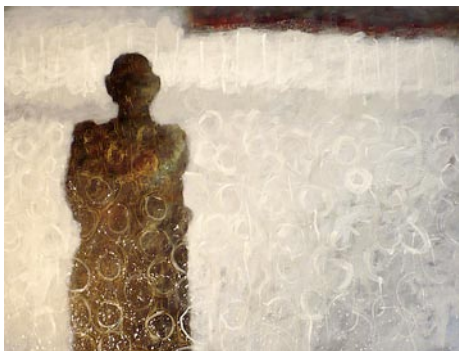
ALTERNATE ART SPACES - Charleston **The Real Estate Studio**, 214 King Street, Charleston. **Through Dec. 4** - Featuring a show by watercolor painter Frank Peabody. A reception will be held on Nov. 2, from 5-8pm. Hours: Mon.-Sat., 9am-5pm & Sun., noon-5pm. Contact: 843/722-5618.

#### Columbia Area

**Main Street**, downtown Columbia. **Nov. 1, 6-9pm** - "First Thursday on Main". This monthly event held on the 1st Thursday of the month features art presentation - up and down Main Street. Some of the participants include: S&S Art Supply, Tapp's Arts Center, Columbia Museum of Art, Anastasia & Friends Art Gallery, Frame of Mind, Artists in the Arcade, and more. For further information contact Mark Plessinger of Frame of Mind at 803/988-1065, e-mail at ([frameofmind@sc.rr.com](mailto:frameofmind@sc.rr.com)) or Lorri-Ann Carter of CarterTodd & Associates at 803/779-4005, e-mail at ([la@cartertodd.com](mailto:la@cartertodd.com)).

**Congaree Vista area of Columbia. Nov. 15, 2012, 5-10pm** - "27th Annual Vista Lights Celebration". The Vista's signature open house kicks off the holiday season with a night of culture, cuisine and artistic performances. More than 60 galleries, shops, restaurants, bars and entertainment venues will open their doors for the evening to showcase holiday treasures, followed by the annual tree lighting ceremony with Mayor Steve Benjamin. To learn more about the Vista Guild, call 803/269-5964 or at ([www.vistalightssc.com/about.aspx](http://www.vistalightssc.com/about.aspx)).

**Alicia Leeke Fine Art Studio**, 3821 Edinburg Rd., Columbia. **Ongoing** - Featuring original acrylic cityscapes, abstracts, monotypes, and drawings on canvas and fiber. Giclee's on canvas and paper also available. Hours: by appt. only. Contact: 803/429-5456 or at ([www.alicialeeke.com](http://www.alicialeeke.com)).



Work by Wayne Thornley

**Anastasia & Friends Art Gallery**, 1534 Main Street, front of building that Free Times is in across the street from the Columbia Museum of Art, Columbia. **Nov. 1 - 29** - "The Narrative Figure," featuring an exhibition of figure-related, mixed media paintings by Wayne Thornley and Lisa Gray. A reception will be held on Nov. 1, from 6-9pm during Columbia's First Thursday on Main event. Thornley's impressionistic figures were inspired by his father's descent into Alzheimer's Disease. Gray's highly layered work is a combination of acrylic paint, watercolor, ink, oil pastels and varied mediums such as molding paste. Hours: Mon.-Fri., 9am-5pm or by appt. Contact: 803/665-6902 or e-mail at

([stasia1825@aol.com](mailto:stasia1825@aol.com)).

**ArtCan Studio & Gallery**, 108 Beaufort Street, Chapin. **Ongoing** - Featuring original paintings, handpainted furnishing, and limited and open edition lithographs by Judy Bolton Jarrett. Hours: Thur. & Fri., noon-5:30pm; Sat., noon-4pm or by appt. (call before coming). Contact: 803/345-6588 or at ([www.judyjarrettgallery.com](http://www.judyjarrettgallery.com)).

**ART + CAYCE Gallery**, 1329 State St., opposite Brookland Cayce High School, Cayce. **Ongoing** - Our gallery hosts local artists from South Carolina showing works in various media. Every show is different and unique and displays work from abstract painting to mixed media assemblages. Currently we are displaying sculpture by Robin Jones and mixed media assemblage/painting by Andrew Norton Webber. One can expect to visit the gallery during the week and experience a calm atmosphere with engaging pieces. Hours: Mon.-Thur., 1-4pm; Sat., 1-4pm & by appt. Contact: 803/765-0838 or at (<http://artpluscayce.blogspot.com/>).

**Art Studios in the Historic Arcade Building**, 1332 Main Street, at the corner of Washington and Main Streets two blocks from the Statehouse, Columbia. **Ongoing** - Including works by Eileen Blyth (mixed media); Sylvia Potts and Richard Lund (sculptors); Page Morris, Beth West, Suzy Shealy, Walton Selig, Martha Thomas, Jan Swanson, Tish Lowe, Bettye Rivers, Debra Paysinger, Meredith Paysinger, McKenzie Seay and Leah Wimberly (painters). All studios on the main level have glass-fronts so that visitors can see art and the artists at work. Studio hours vary with each artist. Building hours: Mon.-Fri., 8am-6pm or by appt. Contact: Jan Swanson at 803/360-6794, e-mail to ([busstop2711@aol.com](mailto:busstop2711@aol.com)) or on Facebook.

**Artsy Fartsy Art Gallery and Coffee Bar**, 906 Knox Abbott Drive, Cayce. **Ongoing** - Featuring art by local artists and cafe and wine bar. We also have MIND GRAVY which is our poetry night every wed 8-10pm. Hours: Wed.-Sat., 7pm-2am. Contact: 803/7084731 or e-mail at ([Ladyartnsoul@gmail.com](mailto:Ladyartnsoul@gmail.com)).

**Bella Vista Art & Framing**, 705 Gervais St., downstairs of City Market Antiques, Columbia. **Ongoing** - Featuring original works of art of varied national artists, regional artists, vintage art, antiquarian engravings and etchings, original photography. Also a Mort Kunstler dealer and large selection of SC artists, giclees, and limited edition prints. And, offering a full service custom framing shop featuring professional, quality framing at below industry prices. Hours: Tue.-Sat., 10am-5:30pm. Contact: 803/765-0808 or e-mail at ([bellavistaart@bellsouth.net](mailto:bellavistaart@bellsouth.net)).

**Carol Saunders Gallery**, 922 Gervais St., Columbia. **Ongoing** - Featuring fine art objects and works by local artists, including Mana Hewitt, Stephen Chesley, Carol Pittman, Mike Williams, Laura Spong, Heidi Darr-Hope, Judy Hubbard, Jeri Burdick, Clay Burnett, and Eddie Bryan. Hours: M-F, 10am-5:30pm; Sat., 11am-5pm. Contact: 803/256-3046.



Work by Wanda Steppe

**City Art**, 1224 Lincoln Street, Columbia. **Through Nov. 10** - "Acclimations and Alterations," featuring a new body of work by artist Mary Robinson. Robinson is currently an Associate Professor of Art and Head of Printmaking at the University of South Carolina. She received her BFA in Studio Art from the University of Colorado, an MA in Art History from the University of Wisconsin, and an MFA in Printmaking from Indiana University. **Nov. 14 - Dec. 23** - "Sticks and Stones," featuring an exhibit of works by artist/painter Wanda Steppe. A preview reception will be held on Nov. 14, from 6-8pm. Another reception will be held on Nov. 15, from 5-9, during the Vista Lights celebration. Steppe says, "I have amassed a considerable collection of objects that hold personal meaning for me, everything from birds' nests and eggs to dead flowers and insects. They have one thing in common; all are a testament to what once was—elegant, haunting reminders of life at its fullest and the ravages of time". Wanda believes that, "painting has become not just a pursuit but a way of life". **Ongoing** - Featuring works by Jane

Aldridge, Jim Arendt, Randolph New Armstrong, Penny Baskin, Jo Dean Bauknight, Robbie Bell, Kimberly Betchman, Tarleton Blackwell, Angela Bradburn, Betty Bramlett, Joe Byrne, Carolita Cantrell, Kathy Casey, Anne Cunningham, Bob Doster, Gerard Erley, Claire Farrell, Amy Fichter, Tim Floyd, Michael Fowler, Teri Goddard, Harriet Goode, Vanessa Grubbs, Randy Hanna, Shelley Hehenberger, Mana Hewitt, David Kessler, Jan Kransberger, Robert Lyon, Rena MacQueen, Doug McAbee, Fred McElveen, Esther Melton, Max Miller, Lee A. Monts, Marge Loudon Moody, Blake Morgan, Bruce Nellsmith, Heather Noe, Susan Nuttall, Patrick Parise, Ann Hightower-Patterson, Leslie Pierce, Carol Pittman, Sylvia Ady-Potts, Alex Powers, Brian Rego, May Reisz, Tom Risser, Peggy Rivers, Cindy Saad, Sara Schneckloth, Ed Shmunes, Wanda Steppe, Nancy Thompson, Teri Tynes, Yisha Wang, Wendy Wells, Sam Wilkins, Rod Wimer, and Katarina Zaric. This represents a rare opportunity to view a very wide range of acclaimed SC artists at one time. City Art features three distinct gallery spaces. A complete fine artists supply store is located on the lower level. Fine custom designer framing is available at City Art. In addition the Gallery is often host to a variety of events hosted by rental clients. City Art is a wonderful space to enjoy and purchase original art, art supplies, fine framing, take art classes and have wedding receptions, etc. Hours: Mon.-Thur., 10am-6pm; Fri., 10am-5pm, & Sat., 11am-3pm. Contact: 803/252-3613 or at ([www.cityartonline.com](http://www.cityartonline.com)).

**Finleaf Gallery**, 2323 Devine Street, Columbia. **Ongoing** - Featuring original artwork by local and regional artists, whose work has been hand-selected for display in our gallery. Hours: Tue.-Fri., 10am-5:30pm & Sat., 11am-3pm. Contact: 803/254-8327 or at ([www.finleaf.com](http://www.finleaf.com)).

**Fontenay Fine Art, Antiques and Oriental Rugs**, 2716 Devine St., Columbia. **Ongoing** - Featuring antique and contemporary fine art in our gallery of fine rugs and antiques. We now offer full-service framing. Hours: Tue.-Fri., noon-5pm & Sat., 10am-6pm. Contact: 803/254-1352 or at ([www.fontenaydevine.blogspot.com](http://www.fontenaydevine.blogspot.com)).

**Frameland**, 619 Harden St., (Five Points, next to Grouchos Deli), Columbia. **Ongoing** - Featuring local art in Five Points, close to downtown. USC and college art, diploma frames, Columbia and vintage SC prints. Hours: Mon.-Fri., 10am-5:30pm & Sat., 10am-3:30pm. Contact: 803/771-4451.

**Havens Framemakers and Gallery**, 1616 Gervais St., Columbia. **Ongoing** - Exhibiting paintings by local artists: Jamie Blackburn, Diane Gilbert, Betsy Havens, Rob Shaw, Steven Whetstone, James E. Calk and others. Featuring an extensive collection of handcarved museum quality frames. Art and frame restoration. Hours: Mon.-Fri., 9:30am-6pm; Sat., 10am-5pm. Contact: 803/256-1616 or at ([www.havensframemakersandgallery.com](http://www.havensframemakersandgallery.com)).

**HoFP**, 2828 Devine Street, Columbia. **Ongoing** - Featuring original works of art from around the world and around the corner. Hours: Mon.-Fri., 9am-5:30pm; Sat., 10am-5pm, & by appt.. Contact: 803/799-7405 or at ([www.hofpgallery.com](http://www.hofpgallery.com)).

**if ART Gallery**, 1223 Lincoln St., Columbia. **Through Nov. 17** - "18/100 SOUTHERN ARTISTS: The if ART Contingency". The exhibit features works by the 18 if ART artists in the new book "100 Southern Artists" including: Carl Blair, Ashlynn Browning, Jeff Donovan, Phill Garrett, Peter Lenzo, Philip Morsberger, Marcelo Novo, Dorothy Netherland, Janet Orselli, Matt Overend, Paul Reed, Edward Rice, Laura Spong, Leo Twigg, Enid Williams, Mike Williams, David Yaghjian, and Paul Yanko. **Ongoing** - Featuring works by Don Zurlo, Paul Yanko, Edmund Yaghjian, David Yaghjian, Mike Williams, Katie Walker, Bram van Velde, Leo Twigg, H. Brown Thornton, Christine Tedesco, Tom Stanley, Laura Spong, Kees Salentijn, Silvia Rudolf, Edward Rice, Paul Reed, Anna Redwine, Herb Parker, Matt Overend, Janet Orselli, Marcelo Novo, Dorothy Netherland, Philip Morsberger, Joan Mitchell, Eric Miller, Sam Middleton, Reiner Mahrlein, Peter Lenzo, Deanna Leamon, Ger Lataster, Sjaak Korsten, Bill Jackson, Alvin Hollingsworth, Klaus Hartmann, Tonya Gregg, Mary Gilkerson, Ralph Gelbert, Phil Garrett, Jacques Doucet, Jeff Donovan, Stephen Chesley, Steven Chapp, Ashlynn Browning, Carl Blair, Aaron Baldwin, Karel Appel, Roland Albert and Benny Andrews. Hours: Mon.-Fri., 11am-7pm and Sat., 11am-5pm. Contact: 803/238-2351 or e-mail at ([wroefs@sc.rr.com](mailto:wroefs@sc.rr.com)).

**John Miranda's South Carolina Artists Gallery**, Dutch Square Mall, next to Belk, 421 Bush River Rd., Columbia. **Ongoing** - Featuring pastel portraits, pastel paintings and prints by John Miranda, as well as other works by SC artists. **Also** - Featuring a large selection of works by Erica Hoyt, including Charleston prints, colleges

of South Carolina and numbered reproduction prints. Hours: Mon.-Sat., 10am-9pm & Sun. 12:30pm-6pm. Contact: 803/750-6750.

**Lewis & Clark Gallery**, 1221 Lincoln Street, Columbia. **Ongoing** - Featuring work by Clark Ellefson and other contemporary artists. Hours: Mon.-Fri., 9am-6pm; Sat., 9am-3pm & by appt. Contact: 803/765-2405 or at ([www.lewisandclarklamps.com](http://www.lewisandclarklamps.com)).

**Michael Story Studio/Gallery**, 116 Brook Trout Ct., Lexington. **Ongoing** - Featuring traditional landscapes in oil & pastel by Michael Story. Giclee & reproduction prints. Hours by appt. only. Contact: 803/356-4268 or at ([www.michaelstory.com](http://www.michaelstory.com)).

**Mouse House, Inc.**, 2123 Park St. (historic Elmwood Park), Columbia. **Ongoing** - Featuring original fibers and mixed-media artwork by Susan Lenz. Also offering a wide selection of antiquarian prints and beveled mirrors. Hours: Mon.-Fri., 9:30am-5pm & most Sat., 10am-2pm. Contact: 803/254-0842 or at ([www.mousehouseinc.blogspot.com](http://www.mousehouseinc.blogspot.com)).

**Noble's Fine Art Gallery**, 3300 Forest Drive, Columbia. **Ongoing** - Featuring African-American art, originals, giclees, serigraphs, and lithographs. Portrait artist available. Artists featured include: Jim Wider, Tyrone Geter, John W. Jones, Alice Simmons Bing, Keith Tolen, Lori Starnes, and Carl Crawford. Also high quality African sculptures and handmade baskets. Hours: Tue.-Fri., 11am-6pm; & Sat., 10:30am-5pm. Contact: 803-790-5892 or e-mail at ([Cnoble3300@netzero.net](mailto:Cnoble3300@netzero.net)).



Works from One Eared Cow Glass

**One Eared Cow Glass Gallery & Studio**, 1001 Huger St., (just up the street from the old location) Columbia. **Through Dec. 31** - Pick from works that were featured this year at the "Four Seasons" display at the SC State Fair while items last. This is your opportunity to have an item associated with the largest display of handblown glass in SC or the Southeast. **Ongoing** - Handblown glass by Tom Lockart & Mark Woodham, including perfume bottles, ornaments, vases, sculpture, bowls, and paperweights, in all price ranges. Hours: Mon.-Fri., 9am-5pm & Sat., 10am-4pm. Contact: 803/254-2444 or at ([www.oneearedcow.com](http://www.oneearedcow.com)).

**Portfolio Art Gallery**, Five Points area, 2007 Devine St., Columbia. **Ongoing** - Featuring the work of local, regional & national artists. Hours: Mon.-Sat., 10am-6pm. Contact: 803/256-2434 or at ([www.portfolioartgal.com](http://www.portfolioartgal.com)).

**Prompt Designs Art Gallery**, 3041 N. Main St., near where the train truss crosses Main St., Columbia. **Ongoing** - Featuring original oils and giclees by Porter O'Brien Dodd. Hours: Mon.-Sat., 10am-6pm. Contact: 803/252-2927 or e-mail at ([promptdesigns@bellsouth.net](mailto:promptdesigns@bellsouth.net)).

**Rita Smith Gallery**, at Midtown At Forest Acres (formally Richland Mall) across from Barnes & Noble, corner of Forest Drive and Beltline Blvd., Columbia. **Ongoing** - Featuring original watercolors, acrylics and oil paintings and collector prints by Rita Smith as well as paintings and photography by 7 other SC artists. Also a selection of pottery, stained glass, wood turnings, jewelry and other original crafts. Hours: Mon.-Sat. 10am-6pm & Sun. 12:30-6pm. Contact: 803/790-0328.

**Southern Pottery**, 3105 Devine St., Columbia. **Ongoing** - Featuring pottery works by Ken Baskin, Donna Craven, Jeremy Davis, Kim Ellington, Bruce Gholson, Samantha Henneke, David Hooker, Rocky Lewycky, Peter Lenzo, Karen Newgard, Mark Peters, Ron Philbeck, Virginia Scotchie, Gay Smith, David Stempfle, Ben Truesdale and Mike Vatalaro. Hours: Tue.-Fri., 11am-6pm & Sat., 10am-6pm. Contact 803/251-3001 or at (<http://southern-pottery.com/>).

**The Gallery at DuPRE**, 807 Gervais St., DuPRE Building, in the Vista, Columbia. **Ongoing** - Featuring works by artists who are impacting the state and beyond artists who are impacting the state and beyond, in a variety of media. Hours: Mon.-Fri., 9am-6pm or by appt. Contact: Gallery Curator, Byers Greer at 803/546-1143 or at ([www.dupregallery.com](http://www.dupregallery.com)).