

:30pm and most weekdays or by appt. Contact: 828-776-2716 or at (<http://www.310art.com/main/>).

The Bender Gallery, 12 S. Lexington Ave., Asheville. **Through Dec. 28** - "Vitric Compositions: Assemblages in Glass". The exhibition will explore the work of three internationally collected glass artists who construct glass sculptures by assembling individual pieces of glass by fusing or laminating. The exhibit will showcase the work of Martin Kremer, Toland Peter Sand, and William Zweifel and their individual approaches to the assemblage of glass componentry in creating sculpture. **Ongoing** - The region's largest and most diverse studio glass gallery on two sun-filled levels features artists from around the country as well as around the world. Hours: Mon.-Sat., 10:30am-5pm & Sun., noon-5pm. Contact: 828/505-8341 or at (www.thebendergallery.com).

The Haen Gallery, 52 Biltmore Ave., a few steps south of the movie theatre, Asheville. **Through Nov. 30** - "Lynn Boggess: New Work 2012". Boggess is one of the most unique and noteworthy American landscape painters of the 21st Century. **Ongoing** - Committed to providing access to stunning and unique artwork for discerning collectors and our community in general. Our offerings will reflect the character and sensibilities of this wonderful region. Including works by Lynn Boggess, GC Myers, Jerry Bowman, Alvena McCormick, Volkmar Wentzel, and MM Pipkin. Hours: Mon.-Fri., 10am-6pm; Sat., 11am-6pm; and Sun., noon-5pm. Contact: 828/254-8577 or at (www.thehaengallery.com).

The Satellite Gallery, 55 Broadway, Asheville. **Ongoing** - Featuring works by the next wave of innovative and creative artists that are rising from the underground of contemporary street and pop culture. Hours: Tue.-Sat., 11am-6pm & Sun., noon-6pm. Contact: 828/505-2225 or at (<http://www.thesatellitegallery.com/>).

Woolworth Walk, 25 Haywood Street, Asheville. **Ongoing** - Featuring artwork and crafts by over 170 artists. Hours: Mon.-Sat., 11am-6pm, closed Tue. (until Mar.), & Sun. 11am-5pm. Contact: 828/254-9234 or at (www.woolworthwalk.com).

ALTERNATE ART SPACES - Asheville
89 Woodward Avenue, Norwood Park area of North Asheville. **Nov. 17, 10am-5pm & Nov. 18, noon-5pm** - "15th Voorhees Family Art Show and Sale". This year's annual event will feature new work created by six Voorhees family members along with two guest artists. Hosted in cousin Marien Bradsher's circa 1916 house with its majestic American Elm, the event will again be featured in a family home in Norwood Park. Meet this extraordinary family of artists known throughout North Carolina and the Southeast. A portion of the proceeds will be donated to MANNA FoodBank and to Kiva, helping others, locally and globally. For more information and map visit (www.handinhandgallery.com) or call Hand in Hand Gallery at 828/697-7719.

Hilton Asheville Biltmore Park, 42 Town Square Blvd, just off Long Shoals Road (I-26, Exit 37), lobby level of the hotel, adjacent to the Pisgah Ballroom, Asheville. **Through Jan. 8, 2013** - Award-winning photographer Rob Travis exhibits a series of kinetic images. Kinetic photography is an experimental photographic technique in which the photographer uses movement resulting from physics to create an image. Hours: regular Hotel hours. Contact: call 828/231-5355 or at (www.whoknowsart.biz).

The Captain's Bookshelf, 31 Page Ave., Asheville. **Ongoing** - Featuring original art, prints and poetry broadsides are displayed along with a quality selection of secondhand and rare books. Hours: Tue.-Sat., 10am-6pm. Contact: 828/253-6631 or at (<http://www.captainsbookshelf.com/>).

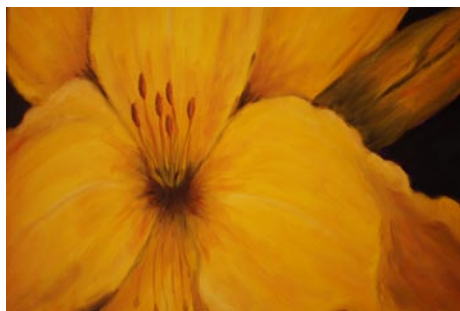
Atlantic Beach

Vision Gallery, 407 Atlantic Beach Causeway, Atlantic Beach. **Ongoing** - Featuring original paintings and three-dimensional work from regional and national artists, and one and two-person shows in summer months. Hours: 10:30am-5pm, closed Wed, Sun. Contact 252/247-5550 or at (www.twogalleries.net).

Bakersville

Crimson Laurel Gallery, Blevins Building, 23 Crimson Laurel Way, Bakersville. **Nov. 3 - Dec. 31** - "Source Material: An Exhibition on Water and the Ceramic Cup". A reception will be held on Nov. 3, beginning at 6pm. This is one of our most anticipated exhibitions of the year and Gainesville, Florida potter Lindsay Rogers has been selected to curate this year's event. Lindsay has selected 68 of her favorite ceramic artists from around the country for the exhibition and they represent a broad range of unique

styles and techniques. **Ongoing** - Featuring the largest selection of studio ceramics in Western North Carolina, including some of the finest art and craft to be found anywhere in Appalachia. We also represent select artists from around the country and their unique artwork. Representing more than 90 artists. Hours: Tue.-Sat., 10am-6pm and open daily Oct. - Dec. Contact: 828/688-3599 or at (www.crimsonlaurelgallery.com).



Work by Dorthy Buchanan Collins

Mica - Fine Contemporary Craft, 37 N. Mitchell Avenue, Bakersville. **Through Dec. 31** - "Late Bloomer, A Celebration of Color" featuring an exhibit of floral-inspired oil paintings by Dorothy Buchanan Collins. **Ongoing** - Our cooperative gallery currently has eleven members who are from the Bakersville, Penland, and Burnsville areas including: Jon Ellenbogen & Becky Plummer, Kent McLaughlin & Suze Lindsay, Gertrude Graham Smith, Susan Feagin, Cynthia Bringle, David Ross, Shauna Lyons, Joy Tanner, William Baker, Claudia Dunaway, Jenny Lou Sherburne, Jacque Allen, and Pablo Soto. Visit any day and you're likely to meet one or two of the Mica artists. Hours: Sun. - Sat., 10am-6pm. Contact: 828/688-6422 or at (<http://www.micagallerync.com>).

Michael Kline Pottery, 4062 Snow Creek Road, Bakersville. **Ongoing** - Featuring pottery by Michael Kline and jewelry by Stacey Lane. Contact: call 828/675-4097 or visit (<http://michaelklinepottery.blogspot.com/>).

Banner Elk Area

Alta Vista Gallery, 2839 Broadstone Road, (between Banner Elk and Boone) Valle Crucis. **Ongoing** - Featuring fine art gallery in historic farmhouse, located near the Original Mast General Store. In its 20th year and representing over 100 artists, the gallery specializes in oils and watercolors depicting mountain landscapes. Artists include: B. Jean Baird, Alan McCarter, Louise Pinto, Jean Pollock, Ray Byram, Joan Sporn, Elizabeth Ellison, Dotti Shelton. Also shown are original lithographs and original serigraphs from internationally-acclaimed artists such as ALVAR, Boulanger, and folk artist Will Moses, great-grandson of "Grandma Moses." Also: kaleidoscopes, stained-glass, pottery, jewelry, sculpture, and custom framing. Designer Bed-and-Breakfast rooms on-site. Open all year; hours vary according to season. Summer/Fall Hours: 11 am-5pm daily, except for Sun., which are by appt. Contact: 828/963-5247 or at (www.altavistagallery.com).

Art Cellar Gallery, 920 Shawneehaw Ave., Hwy 184, Banner Elk. **Ongoing** - Three floors of exhibition space featuring painting and sculpture from regionally and nationally known artists. Featured artists include: William Dunlap, Herb Jackson, Gregory Smith, Norma Murphy, Tim Turner, Deborah Jacobs Purves, Bill Brown, Scott Boyle, Margaret Salisbury, and others. Hours: Mon.-Sat., 10am-5pm. Contact 828/898-5175 or at (www.artcellaronline.com).



Work by Toni Carlton

Carlton Gallery, 10360 Hwy 105 South, Grandfather Community, near Linville. **Through Nov. 18** - "2012 Figurative Abstractions," featuring works by Warren Dennis. Dennis' oils on canvas in this exhibition are cubist based while his paintings for many years were naturalistic based with a little eccentricity. **Nov. 23 - Mar. 15, 2013** - "Winter Group Exhibition," featuring works by gallery artists. Nov. 23 & 24 - "Holiday Open House". **Ongoing** - Featuring the work of over 200 local, regional & national artists presenting fine art, woven works, sculpture, jewelry, pottery and contemporary crafts. Hours: Mon.-Sat., 10am-5pm & Sun., 11am-5pm. Contact: 828/963-4288 or at (www.carltonartgallery.com).

Sally Nooney, Artists Studio Gallery, located midway between Banner Elk & Valle Crucis

on Hwy 194 So. **Ongoing** - Featuring the rich, vibrant works of Sally Nooney in oil, acrylic, and watercolor. Hours: Tue.-Sat., 10am-5pm. Contact: 828/963-7347 or at (www.sallynooney.com).

Beaufort

Landscapes Gallery Fine Arts and Crafts, 410 Front Street, Beaufort. **Ongoing** - The Gallery promotes American traditions in pottery, jewelry and glasswork with an emphasis on North Carolina artists. Over 200 artists are represented in a full range of work from the traditional to the contemporary in pottery, glass, jewelry, metal, wood and other media. Hours: Mon.-Sat., 10am-6pm & Sun., 10am-5pm. Contact: 252-728-6805 or at (<http://www.landscapesgallery.com/>).

Belmont

JS Pottery Antiques and Collectibles, 27 North Main Street, Belmont. **Ongoing** - Offering pieces ranging from face jugs, vases, pitchers and planters with hand-painted iris, dogwood, and magnolia designs to beautiful hand-carved North Carolina lighthouses. Hours: Mon.-Sat., 9am-6pm & Sun., noon-5pm. Contact: 704/829-0360 or at (www.jspottery.com).

Black Mountain/Montreat/Swannanoa

Acoustic Corner, 105 F Montreat Rd, Black Mountain. **Ongoing** - Acoustic instruments hand-made or manufactured by hand in small factories. Guitars, mandolins, bouzoukis, banjos, violins, lap dulcimers, and other instruments popular in Celtic, Old-Time, Bluegrass, and other folk genres. Plus all accessories. Hours: Mon.-Fri., 10am-7pm & Sat., 10-5pm. Contact: 828/669-5162.

Black Mountain Iron Works, 120 Broadway, Black Mountain. **Ongoing** - Featuring works handcrafted in iron & other metals by Tekla and Dan Howachyn. Hours: Mon. -Sat., 10am-5pm. Contact: 1/888/689-9021 or at (www.BlackMountainiron.com).

Black Mountain Quilts, 121 Cherry St., Black Mountain. **Ongoing** - Heirloom quality quilts, accessories, handbags, tabletop, and baby quilts. Hours: Mon.-Sat. 10-6pm & Sun. 12-5pm. Contact: 828/669-0730.

Black Mountain Studios Inc., 626 Lytle Cove Rd., just 3 miles from downtown Black Mountain, Swannanoa. **Ongoing** - A fine pottery craft and art gallery featuring many local as well as some nationally know artists. Owner and operated by award winning potters Austin and Maud Boleman. Hours: 11am-6pm seven days a week. Contact: 828/686-1011.

Cherry Street Gallery, 132 Cherry Street, Black Mountain. **Ongoing** - Featuring arts and crafts by regional artisans. Hours: Mon.- Sat., 10am-5pm & Sun., 1-5pm. Contact: 828/669-0450.

Garrou Pottery, 100 State St., Black Mountain. **Ongoing** - Featuring a wide variety of handmade pottery by father and son, John and Derrick Garrou, and the works of other area craftsmen. Hours: Mon.-Sat., 11am-5pm. Contact: 828/669-0222.

Seven Sisters Gallery, 117 Cherry Street, Black Mountain. **Ongoing** - Featuring a large selection of arts and crafts by local, regional and national artists. Hours: Mon.-Sat., 10am-6pm & Sun., noon-5. Contact: 828/669-5107 or at (www.sevensistersgallery.com).

Song of the Wood, 203 West State St., Black Mountain. **Ongoing** - Home of rare, one of a kind, handcrafted musical instruments and enchanting recordings. Come enjoy our intimate approach to the senses. Hours: Mon.-Sat., 10am-5pm. Contact: 828/669-7675.

Sourwood Gallery, 110 Broadway, Black Mountain. **Ongoing** - Featuring a co-op gallery of local artists offering original art for sale, including: paintings, pottery, jewelry, photography, stained glass and other fine art. Artists are: Kent A. Barnes, Katrina Bass, Judith Bush, Sarah Campbell, Charley, Ruth Connor, Denise Geiger, Jean Hope, Elizabeth Kirk, Ida O'Connell, Billy Ogle, Eileen Ross, Marilyn Sobanski, Jenean Stone, Susan Taylor, Summer G. Ventis, Ann Whisenant, and Katherine Youtz. Hours: Mon.-Sat., 10am-5pm. Contact: 828/669-4975.

Studio 103 Fine Art Gallery, 103 West St, Black Mountain. **Ongoing** - Owned and curated by photographer Rebecca D'Angelo, the gallery will feature monthly shows by local and national artists. It will also offer local art and crafts for sale in its retail section. Hours: Wed.-Sat., noon-6pm or by appt. Contact: call Rebecca D'Angelo at 828/357-8327 or at (www.studio103fineartgallery.com).

Ten Thousand Villages, 303 Lookout Rd., Montreat. **Ongoing** - Fair trade source for handmade items from more than 30 countries in Africa, Asia and Latin America. Hours: Mon.-Sat. 10am-5pm. Contact: 828/669-1406.

The Ginkgo Tree Photo Gallery & Frame Shop, 128 Broadway, Black Mountain. **Ongoing** - Gifts, cards, prints, photography and framing. Hours: Mon.-Fri., 10am-5pm & Sat., 10am-4pm. Contact: 828/669-7721.

The Old Depot Arts & Crafts Gallery, intersection of Sutton and Cherry Streets, Black Mountain. **Ongoing** - A non-profit arts/crafts gallery representing local artists. Proceeds support arts in the schools program. Pottery, folk art and more. Hours: Tue.-Sat., 10am-5pm & Sun., 1-5pm. Contact: 828/669-6583.

Visions of Creation Gallery, 114 Cherry State Street, Black Mountain. **Ongoing** - Featuring unique, contemporary fine gold jewelry of incomparable beauty and quality handcrafted by Robert Vengoechea. Hours: Tue.-Sat., noon-6pm & Sun., 1-5pm. Contact: 828/669-0065.

Blowing Rock

IAGO, 1165 Main St., Blowing Rock. **Ongoing** - Featuring inspired, contemporary, fine art and handcrafts from a variety of artists working in the fields of jewelry, fashion accessories, art glass, functional art for the home, pottery, lighting, furniture, and garden art. New for 2006 are huge art glass bowls and platters from Dennis Mullen, raku mirrors and wall pieces by Bonnie J. Smith, and Sasaki crystal. New jewelry lines for 2006 include Tashi, Chenille, Messina Designs, and Jeannine and Charles MacKenzie. Reappearing at Iago this year are wall sculptures by David Bowman, tall iron vases from David Coddair, Blowing Rock scenes in watercolors by local artist, Tom Gruber, mountain and piedmont landscapes in acrylics from Ginny Chenet, art glass from Ioan Nemtoi, the finest in glass pumpkins and hummingbird feeders from Jack Pine, and pottery from Jan Phelan, and Ed and Julie Rizak. Hours: daily, 10am-6pm. Contact: 828/295-0033 or at (www.iagoblowingrock.com).

Main Street Gallery, 960-5 Main St., Blowing Rock. **Ongoing** - Featuring a co-op of area artists that has been opened since 1982. The gallery offers baskets, pottery, weaving, photography, jewelry, woodworking, glass art, fibers and much more. Hours: daily, 10am-6pm. Contact: 828/295-7839.

Morning Star Gallery, 915 Main Street, across the street from the Speckled Trout Cafe, Blowing Rock. **Ongoing** - Featuring oil and acrylic paintings by Ann Thompson featured with ceramic bas reliefs and sculptures from the studios of John Martin and Maryanne Bona Dayman and wildlife carvings by H. Gray Turner. Rod Shaw's terra cotta sculptures. Also, multiplate etchings, watercolors, jewelry, pottery, garden accessories, glass and wooden treasures. Hours: Mon.-Sat., 10am-5pm and Sun. 1-5pm. Contact: 828/295-6991.

The Bob Timberlake Gallery at Blowing Rock, 946 Main Street Blowing Rock. **Ongoing** - Featuring original artwork and reproductions by Bob Timberlake. Also furniture, gifts, apparel and collectibles. Hours: they vary - call ahead. Contact: 828/295-4855 or at (www.bobtimberlake.com).

Winterfire Craft Gallery, 1087 Main Street, Blowing Rock. **Ongoing** - Featuring pottery by Bill Campbell as well as hand-crafted jewelry, metal sculpture, hand-thrown pottery, art glass, and calligraphy prints. Hours: Mon.-Sat., 10am-6pm. Contact: 828/295-4880.

Boone

Miters Touch Woodworking, 6858 Hwy. 105 S., Foscoe, near Hound Ears. **Ongoing** - Featuring fine furniture by Denise Grohs and Miters Touch, pottery by Eric Reichard, art quilts by Linda Smith, stained glass by Dianne Radford, and wood turnings by Todd Davidson. Also cabinetwork and kitchen design services available. Hours: Mon.-Fri., 8am-5pm, Sat. 10am-2pm or by appt. Contact: 828/963-4445 or at (www.miterstouchinc.com).

Brevard - Cedar Mountain Area

Downtown Brevard, Nov. 23, 2012, 5-9pm - "Brevard 4th Friday Gallery Walk". Enjoy an evening stroll in downtown Brevard as you enjoy visiting the art galleries, art stores, retail stores and restaurants that are staying open late. Be sure to look for the 16 sculptures and five murals located in downtown as well. Galleries participating include: Art & Soul Marketplace and Gallery, Bluewood Photography, Drew Deane Gallery, Gallery on Main, Hollingsworth Gallery, Number 7 Fine Arts & Crafts Gallery, Red Wolf Gallery, Transylvania Community Arts Council, 32 Broad

continued on Page 56