

# Charleston Crafts Gallery

continued from Page 6

pre-felt. It is then framed.

While these talented artists will be featured, the work of all gallery members will also be on display at the gallery and all art is available for purchase, including jewelry, wood puzzles, encaustic paints, fiber art, mixed media collage, apparel and accessories, plus functional and decorative objects in wood, ceramic, and glass. Our new location has also afforded us the opportunity to jury-in additional new talented artisans to our growing Fine Crafts Cooperative.

For further information check our SC Commercial Gallery listing, call the gallery at 843/501-7522 or visit (<https://charleston-craftsgallery.com/>).



Work by Bonnie Younginer

## Lowcountry Artists Gallery in Charleston, SC, Features Works by Lisa Willits

Lowcountry Artists Gallery in Charleston, SC, will present *Mystic Vistas*, featuring new paintings by Lisa Willits, on view from Oct. 1 - 31, 2023. A reception will be held on Oct. 6, from 5-8pm.

This collection was inspired by the changing moods of the sky and its influence on the coastal landscape, from bright sunny days with the familiar "happy" clouds over the marsh to brooding storm clouds offshore. Says the artist, "for this series, I used different compositional formats and color palettes to heighten the sense of atmosphere and drama in each painting. I love capturing the fleeting effects of light in a moment in time. I hope viewers feel a deeper sense of connection to nature and the elements through this work."

Willits is one of the owner/members of Lowcountry Artists Gallery where she has exhibited her work since 2013. She paints at her home studio in Mt. Pleasant, SC. Her paintings are included in private and corporate collections across the country. She recently installed a commissioned triptych *Sky's the Limit* at the South Carolina Aeronautical Training Center at Trident Technical College.



Work by Lisa Willits

For further information check our SC Commercial Gallery listings, call the gallery at 843/577-9295 or visit ([www.lowcountryartists.com](http://www.lowcountryartists.com)).

## Dare Gallery in Charleston, SC, Features Works by Susan Hecht

Dare Gallery in Charleston, SC, will present *The Ripple Effect*, a show of new work by painter Susan Hecht, on view from Oct. 6 - 27, 2023. A reception will be held on Oct. 6, from 5-8pm.

*The Ripple Effect* is a collection of new work by painter Susan Hecht that explores the interconnectedness and profound impact of rivers, marshes and oceans on our world. You'll find pieces that showcase the serenity of calm waters, the rhythmic crashing of waves, and the life that thrives above the

surface. A celebration of bodies of water, these works of art encourage viewers to contemplate their own connection to the water and the impact of their actions on the delicate balance of nature. The smallest ripple can create a profound effect on the entire ecosystem.

Hecht says, "For me, art brings to life the details, the things we appreciate without realizing. My work focuses on the beauty of simplicity, the commonalities in the every-

continued above on next column to the right

**THE PASTEL SOCIETY  
OF SOUTH CAROLINA**

IS VERY PLEASED TO PRESENT:

**"PUSHING THROUGH THE LANDSCAPE!"**

A 2 DAY WORKSHOP WITH LAURINDA PHAKOS O'CONNOR, PSA



**Pastel Society  
of South Carolina**  
*Promoting the  
Fine Art of Pastel*

**NOVEMBER 17TH - 18TH, 2023**  
**10:00AM TO 5:00PM**

**TUITION:**  
**MEMBERS \$290**  
**NON-MEMBERS \$350**

FOR FULL DESCRIPTION, REGISTRATION  
& PAYMENT INSTRUCTIONS,  
VISIT [UPCOMING EVENTS](#)



*Winter's Edge by Laurinda O'Connor*



*Standing Time by Laurinda O'Connor*

**JAMES ISLAND ARTS & CULTURAL CENTER**  
**1248 CAMP ROAD**  
**JAMES ISLAND, SC 29412**  
**MWF 9-5, T/TH 10-6, SAT 12-5**

[HTTPS://WWW.PASTELSOCIETYOFSC.COM](https://www.pastelsocietyofsc.com)  
JOIN AT [PASTELSOCIETYOFSC@GMAIL.COM](mailto:PASTELSOCIETYOFSC@GMAIL.COM)

day, the things we can relate to. Because it's our relationships that matter most; relationships between people, between past and present, between light and dark, between the individual and the whole."

Favorite subjects of Hecht are the familiar saltmarshes and tidal creeks that weave throughout the coastal landscape. The dynamic ecosystems found in these wetlands provide endless sources of inspiration for her paintings. In these pieces, the sway of marsh grasses and the play of light on the water's surface are captured. The freedom of soaring seagulls and graceful egrets are portrayed in joyful, serene tones. With expressive brushwork and Hecht's signature warm and inviting palette, these paintings will leave you with a sense of peace and reflection.

This show also includes several large-scale paintings portraying the vastness and power of oceans, the ebb and flow of the tides, and whispering sea oats. The light and shadows in Hecht's paintings of dunes highlight the beauty of something as ordinary as sand, with footprints giving a subtle nod to the human connection. These works serve as

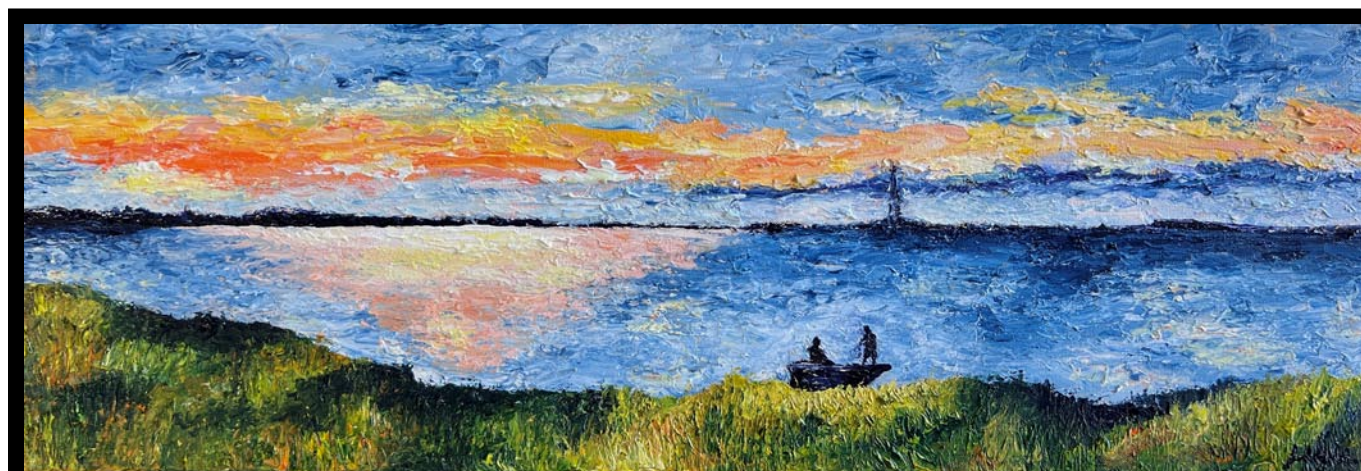


Work by Susan Hecht

a moving reminder of the immense beauty and fragility of our waterways, emphasizing the ripple effect that extends beyond their shores and impacts all life on Earth.

"Through my work, I hope to evoke that sense of connection and create something beautiful that others can enjoy," says Hecht.

For further information check our SC Commercial Gallery listings, call the gallery at 843/817-8826 or visit ([DareGallery.net](http://DareGallery.net)).



*Lowcountry Sunrise, 12 x 36 inches*

*Julie Byrd Diana*  
Byrd on the Wall

~ Award winning Painting and Photography ~



[www.byrdonthewall.com](http://www.byrdonthewall.com)

**BYRD ON THE WALL**

**FINE ART BY**

**JULIE BYRD DIANA**

**October Juried Exhibitions**

of works

in Charleston, SC, include:

The Charleston Artist Guild Gallery

City Gallery

Avery Research Center Cox Gallery  
(College of Charleston)