

Stormwater Studios in Columbia

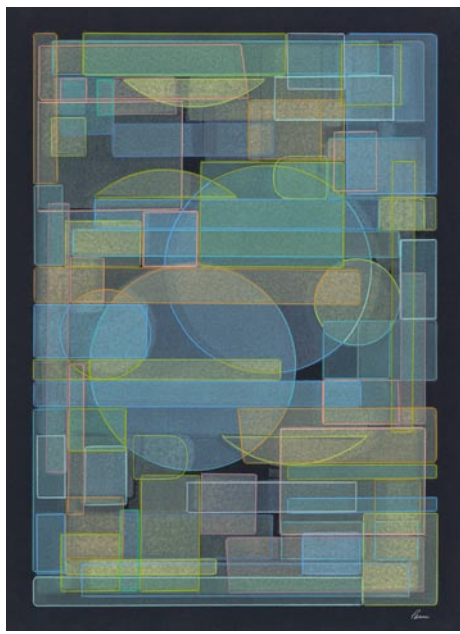
continued from Page 22

making original prints. From there, Parise expanded his pursuits to include working in oils, acrylics, mixed media, collages, and sculpture. He also creates custom inlaid floors with exotic woods and stone for private residences.

Numerous accomplishments include inclusion to Artfields Art Competition in Lake City, SC, six consecutive years. Parise was also selected, among international artists, as the monthly winner of "Your Studio Competition," Saatchi Gallery, London, England. Solo shows in 2006, 2007, 2008 and 2010 at Gallery 80808/Vista Studios in Columbia, SC, as well as City Art Gallery, Columbia, SC, in 2011 and 2015.

Parise was chosen to provide 150 etchings depicting South Carolina for gifts to foreign dignitaries presented by the SC State Development Board. He created seventy-one etchings for a twenty-five-room guesthouse at Houndslake Country Club in Aiken, SC. His work was selected to be awarded by the South Carolina Joint Legislative Committee on Cultural Affairs to fourteen South Carolina businesses recognized for their contributions to and support of the arts in South Carolina.

Parise participation in the "Palmetto Tree Project" with the Cultural Council of Richland and Lexington Counties of South Carolina brought the second-highest



Work by Patrick Parise

purchase price at auction by Sotheby's. He was also commissioned to design and create twenty-four 7-foot-tall mahogany and brass candelabras for Shandon Presbyterian Church in Columbia, SC.

For further information check our SC Commercial Gallery listing or visit (www.StormwaterStudios.org).

Rob Shaw Framing and Gallery in West Columbia, SC, Offers Works by Boyd Saunders & Russell Jeffcoat

Rob Shaw Framing and Gallery in West Columbia, SC, will present *La Femme*, featuring works by Boyd Saunders and Russell Jeffcoat, on view from Oct. 1 - 31, 2022. A reception will be held on Oct. 7, from 6-9pm.

The show's title, *La Femme*, recognizes this visual celebration of the eternal feminine presence. Artists throughout history have been inspired to depict women, honoring them both as the source of life and as the embodiment of physical grace and beauty.



Work by Boyd Saunders

Saunders' work spans more than fifty years. Painter, illustrator, printmaker, and distinguished professor emeritus of art at the University of South Carolina, he was born on a farm in Tennessee. Winner of multiple awards, Saunders has exhibited around the world, from Argentina to China. He began the printmaking program at the UofSC and has long been a fixture in the art scene throughout the Southeast.

Russell Jeffcoat, a native of South Carolina, specializes in portraits and fine art photography of the South, rendered with a painstaking attention to detail. His subject matter ranges from classical portraits to luminous figures and reflects his expert understanding of a nearly lost artform: the use of vintage cameras and film.



Work by Russell Jeffcoat

The celebration of the feminine form can be traced as far back as the 30,000-year-old Venus of Willendorf and includes the marble Statue of a Woman from ancient Greece and the many renditions of the Madonna during the Italian Renaissance. Saunders and Jeffcoat have often returned to this time-honored form of artistic expression that remains prominent in contemporary art.

Rob Shaw Framing and Gallery is a full-service frame shop and fine art gallery. Since opening his gallery in April of 2019, Shaw has hosted monthly exhibits to showcase South Carolina's many talented artists.

For further information check our SC Commercial Gallery listings, call the gallery at 803/369-3159 or visit (www.robshawgallery.com).

USC Lancaster's Native American Studies Center in Lancaster, SC, Celebrates Its 10th Anniversary

Celebrate with USC Lancaster's Native American Studies Center as it commemorates a decade in downtown Lancaster, SC's Cultural Arts District during its 10th Anniversary Celebration on Saturday, Oct. 8, 2022.

The event, held from 10am - 5pm, will

feature storytelling from Catawba artist and storyteller Beckee Garris at 11am, a pottery demonstration from Catawba potter Keith "Little Bear" Brown at noon, a beadwork demonstration from Wassamasaw artists Tammy Leach and Joshua Shumak at

continued above on next column to the right

1pm, and drumming and dancing from the Catawba Cultural Preservation Project from 2-4pm.



Catawba potter Keith "Little Bear" Brown will present a pottery demonstration at noon on Saturday, Oct. 8, 2022, as part of the Native American Studies Center's 10th Anniversary Celebration in downtown Lancaster, beginning at 10am.

Throughout the day, guests can enjoy food from the Smokin' Butts BBQ food truck and shop for crafts, decorative items, mixed media artwork, and more from Native American artists, including pottery by JoAnn Bauer, baskets and pottery by Faye Greiner, quilting by Teresa Harris, etched glass and wreaths from Marie Maynor, beadwork by Michelle Wise Mitchum, pottery and leatherwork by Barbara MorningStar Paul, pottery by Caroleen Sanders, beadwork by Jeannie Sanders, and crafts by the Catawba Nation Senior Center.

"We hope members of the Lancaster community, who have been so supportive



Shop for baskets, like these from artist Faye Greiner (pictured in background), Catawba pottery, quilts, beadwork, leatherwork and much more from art vendors from 10am - 5 pm at the Native American Studies Center's 10th Anniversary Celebration on Saturday, Oct. 8, 2022.

over the past 10 years, will come out and celebrate this milestone with us," said Dr. Stephen Criswell, Director of Native American Studies at USCL.

Artist demonstrations and performances are sponsored in part by the SC Arts Commission's Folklife and Traditional Arts Program and OceanaGold. Thank you to Duke Energy, the City of Lancaster, and the University of South Carolina Lancaster for their generous support of the 10th Anniversary Celebration.

For further information check our SC Institutional Gallery listings, call the Center at 803/313-7172 or visit (www.sc.edu/lancaster/NAS).

Stormwater Studios in Columbia, SC, Features Works by Robert Kennedy

Stormwater Studios in Columbia, SC, will present *My Life in the Figure*, a studio closing exhibition by Robert Kennedy, on view from Oct. 12 - 15, 2022. A reception will be held on Oct. 13, from 5-8pm.

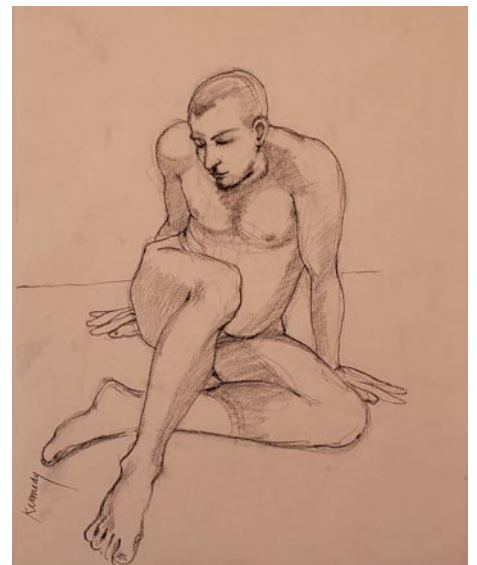
This exhibition is the culmination of the last 30 years of Kennedy's work, first at Gallery 80808 and now Stormwater Studios.

Kennedy's first opportunity to work from a model was when he enrolled in the Academia de Belle Arte in Florence Italy at age 23. Since that time, he has worked in a variety of media painting and drawing always with a live model. It has remained his favorite subject all these 60 odd years.

Drawing from a model is never the same from one to another. The variety never fails to inspire Kennedy. No two are alike as the movement of the model presents a new image each time.

Art has been in Robert Kennedy's blood from an early age and he has pursued his interest in it for many years, first as a watercolor student then oils, acrylic, and charcoal.

For the last 32 years Kennedy has focused on the figure as a subject using charcoal and conte crayon on paper or acrylic



Work by Robert Kennedy

on canvas as his medium. Working from the live model is the artist's choice setting, which is available with the group About Face or in his studio at Stormwater Studios.

For further information check our SC Commercial Gallery listing or visit (www.StormwaterStudios.org).

Asheville Art Museum in Asheville, NC, Offers Exhibit Exploring Gender

The Asheville Art Museum in Asheville, NC, is presenting *Rebel/Re-Belle: Exploring Gender, Agency, and Identity | Selections from the Asheville Art Museum and Rubell Museum*, on view through Jan. 16, 2023.

The exhibition combines works, primarily created by women, from two significant collections of contemporary art to explore how artists have innovated, influenced, interrogated, and inspired visual culture in the past 100 years.

According to Assistant Curator Hilary Schroeder, "expressions of identity are at the core of many artists' work, and artists have long used colors, imagery, gestures, and media to tell their stories and share their points of view. The 20th and 21st centuries are defined by movements to uplift the voices of the otherwise silenced and give agency to authentic expression."

Artists working in the United States have created artworks in support of and in response to these activist movements, including the Civil Rights Movement, feminist movements, and movements for lesbian, gay, bisexual, trans, and queer (LGBTQ) rights. "We're excited to share with the community artworks from both the Asheville Art Museum's collection and the Rubell Museum's extensive holdings of



Corn Wagon Thunder, "Laundromat" from the Wonder series, 2017. Archival print on Epson Ultra Premium Presentation matte paper, 10 x 15 inches, Asheville Art Museum. © Corn Wagon Thunder.

important American artists that inspire contemplation of ideas around agency, gender, and identity through a variety of materials, perspectives, and scales," says Schroeder.

Rebel/Re-Belle showcases the viewpoints of artists whose identities exist at the intersection of many lived experiences, including gender, race, and socio-economics in two sections: Rebel and Re-Belle. Featured artists in the exhibition include Anni Albers, Judy Chicago, Bessie Harvey, Wendy Red Star, and Liz Williams from the Asheville Art Museum's 74 years of collecting, and Marilyn Minter, Catherine Opie, Jennifer Rubell, Tschabalala Self, Cindy Sherman,

continued on Page 25