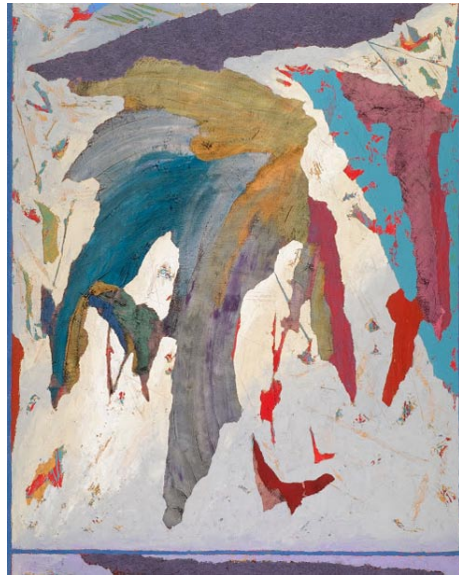


NC Institutional Galleries

continued from Page 56

Tue.-Fri. 11am-7pm & Sat., 10am-6pm. Contact: 919/844-0765.



Work by Herb Jackson

Gregg Museum of Art & Design, The Historic Chancellor's Residence, NC State University, located at 1903 Hillsborough Street, Raleigh. **Through Dec. 30** - "Show & Tell," celebrating the collections of the Gregg Museum of Art & Design. The exhibition explores the vast range of human creativity represented by the more than 35,000 objects that comprise the Gregg Museum's permanent collections. From disguised war maps and iconic industrial designs to New Guinea body masks, even long-term fans of the Gregg will discover plenty of surprises among the objects on view. **Through Jan. 28, 2018** - "A Door is not a Window," featuring paintings by Herb Jackson. This presentation features major abstract works from the past two decades by Raleigh native Herb Jackson, one of North Carolina's premier contemporary artists. The exhibition employs special lighting made possible by support from Wells Fargo. **Through Apr. 29, 2018** - "Treasures of Native America," featuring selections from the Drs. Norman and Gilda Greenberg Gift. This exhibition includes silver and turquoise jewelry (displayed in special visitor exploration drawers), Navajo weavings, Hopi katsinam, Apache basketry, Pueblo pottery and Northwest Coast masks. Together, they offer a glimpse into the riches of the Greenberg Collection, a major recent donation to the Gregg Museum. **Ongoing** - The Museum along with the 15,000 sq. ft. addition currently under construction will increase the museum's visibility while significantly adding to its exhibition and programming space. Hours: Mon.-Fri., 9am-5pm. Contact: Zoe Stirling, Curator of Education at 919/513-7244 or at (<https://gregg.arts.ncsu.edu/>).

North Carolina Museum of Art, 2110 Blue Ridge Road, Raleigh. **Oct. 28 - Jan. 21, 2018** - "Inspiring Beauty: 50 Years of Ebony Fashion Fair," which tells the remarkable story of an extraordinary fashion show. The exhibition explores the 50-year history of the Ebony Fashion Fair (1958-2009), an unparalleled charity fashion show event that redefined the concepts of beauty, fashion, and empowerment for African Americans. It features 40 stunning ensembles by designers such as Stephen Burrows, Pierre Cardin, Christian Dior, Givenchy, Patrick Kelly, Christian Lacroix, Yves Saint Laurent, Bob Mackie, Alexander McQueen, b. Michael, Missoni, Jean Patou, and Vivienne Westwood. The exhibition also includes archival photographs and memorabilia from "Ebony" magazine and Ebony Fashion Fair. **Joyce W. Pope Gallery, Through - Dec. 31** - "Donald Sultan: The Disaster Paintings". Each of these 11 paintings, created between 1984 and 1990, is an imposing, industrial-like structure, reinforced by Sultan's preferred media of Masonite tiles and tar. The resilience of his materials contrasts with his subject matter: fires, floods, and industrial catastrophes, which provoke feelings of fear, instability, and frailty. These large-scale paintings, most of which measure eight feet square, are heavy and dense, bringing a serious permanence to calamities that are often over in a flash. Sultan's images force us to confront the realities of contemporary life and dare us to remember the long-term effects of each accident or reaction. **East Building, Level B, Through Jan. 28, 2018** - "Andrea Donnelly: We've Met Before". North Carolina-raised artist Andrea Donnelly explores the dynamic between the formulaic methods of handwoven cloth and the impulsiveness of ink in the creation of her larger-than-life textiles, featuring images of the human body, blots, and delicate floral abstractions. Her art furnishes both mental and physical spaces by creating an intimate, tactile relationship between the viewer and cloth. She employs photography to create the silhouettes within her work, giving her art a precision that reiterates the meticulous process of hand weaving fiber. Calling her work "a literal record of its making," Donnelly

uses textiles to replicate the process of creating a mirror image on paper with ink through dyeing, weaving, unweaving, and weaving again. **East Building, Level B, Video Gallery, Through Jan. 28, 2018** - "Sabine Gruffat: A Kiss of the Earth". The exhibit is an interactive computer-animated video and sound installation inspired by Sergei Diaghilev's revolutionary 1913 Ballets Russes production of The Rite of Spring, scored by Igor Stravinsky. It is the story of a pagan tribe calling on its deities to restore the earth, a drama that ends with a sacrificial maiden's dancing herself to death. **East Building, Level B, Allen G. Thomas Jr. Photography Gallery, Through Jan. 28, 2018** - "Night(Light)". The exhibit explores light as it interacts with darkness in photography. In its purest form, photography harnesses light. The images give shape to light, immortalizing and suspending it. The eerie feeling of night is not lost in these photographs from the Museum's permanent collection. **East Building, Level B, Julian T. Baker Jr. Photography Gallery, Through Jan. 28, 2018** - "Rhythmic Vitality: Photographs by Barbara Morgan". This exhibition features photographs by Barbara Morgan from the NCMA's permanent collection. Although Morgan, one of the founders of the photography magazine Aperture, is best known for her studies of modern dance, she also created photomontages and light drawings. Morgan said: "Whether my work is large or small, abstract or realistic, the one thing that must be present is rhythmic vitality...it doesn't matter if it is dance or montage or people or nature. There always has to be the presence of energy." **African Art Gallery, East Building, Level A, Ongoing** - Featuring African creativity spanning 16 centuries. The new gallery will be three times as large as the old West Building gallery, allowing the Museum to display nearly twice as many works - including some that have not been on view in a decade, and others that are newly acquired and have never before been on display. The new gallery will feature improved light control so that light-sensitive works of art, such as textiles and works on paper, can be given more visibility, shown in curated rotations. The gallery will include a designated space to highlight North Carolina collections of African art from private collectors and public institutions, beginning with work from Bennett College. It will also incorporate African and African Diasporic modern and contemporary art, including a site-specific wall drawing by Nigerian-American artist Victor Ekpuk. **NCMA Park - The North Carolina Museum of Art (NCMA)** announces new works of art to be installed in the 164-acre NCMA Park. The works include a bronze tree by Italian artist Giuseppe Penone, a playful pair of benches designed by Hank Willis Thomas, and a 10-day installation of 23-foot-tall illuminated rabbits by Australian artist Amanda Parer. The sculptures will be featured at the NCMA's Park Celebration on Nov. 6, when the public is invited to experience the newly expanded Park with a variety of outdoor activities. **Ongoing** - Featuring 10 additional sculptures by the celebrated French artist Rodin on loan from Iris Cantor's private collection. **Ongoing** - "John James Audubon's The Birds of America". The state has owned this treasured volume since 1848, but it has never been exhibited. **Ongoing** - The North Carolina Museum of Art has an outstanding permanent collection of more than 5,000 objects spanning antiquity to the present day. On the occasion of the expansion, the Museum has acquired more than 100 new works of art. Representing commissions, gifts, and purchases, the new works encompass important and diverse examples of historic and contemporary art from around the world, and will be installed in the Museum's new building and the surrounding landscape. Highlights include a gift of 28 sculptures by Auguste Rodin, and work by such internationally acclaimed artists as Roxy Paine, Ursula von Rydyski, El Anatsui, Jaume Plensa, Jackie Ferrara, Ellsworth Kelly, and David Park, among others. Admission: Yes for some exhibits. Hours: Tue.-Sat., 9am-5pm; Sun., 10am-5pm; & open until 9pm on Fri. Contact: 919/839-6262 or at (www.ncartmuseum.org).

North Carolina Museum of History, 5 East Edenton Street, (between Salisbury and Wilmington Streets), Raleigh. **Through Jan. 6, 2018** - "American Red Cross: Healing the Warrior's Heart through Art." "The museum is pleased to partner with the American Red Cross to bring to the public this exhibit of the remarkable art created by these wounded warriors. We hope it will help people realize the incredible sacrifice these soldiers and veterans have made for our country," said Ken Howard, director of the NC Museum of History. This powerful exhibit features more than 20 paintings and three sculptures created by US Marines who were wounded while serving. **Lobby Case Exhibit, Through Mar. 4, 2018** - "Showcasing Art of Louis C. Tiffany". The exhibit features two of the artist's famous stained-glass windows,

a small number of blown-glass vases, and several lamps. Louis C. Tiffany offers visitors a taste of the variety and vibrancy of the artworks produced at Tiffany's companies around the turn of the 20th century. Tiffany became one of the best-known American proponents of the Art Nouveau movement, and the objects in this exhibit case depict the curved and flowing lines and the jewel-bright colors connected with this style. **Ongoing** - Featuring exhibits dealing with North Carolina's history as a theme. Admission: Free. Hours: Mon.-Sat., 9am-5pm & Sun., noon-5pm. Contact: 919/807-7900 or at (<http://www.ncmuseumofhistory.org/>).

ALTERNATE ART SPACES - Raleigh Progress Energy Center for the Performing Arts, 2 East South Street, Raleigh. **Betty Ray McCain Gallery, Through Oct. 1** - "The Fabric of Raleigh and People with Purpose - Two Photographic Portrait Series by Christer Berg". Award-winning photographer Christer Berg will be exhibiting two large portrait series called "The Fabric of Raleigh and People with Purpose". **Ongoing** - The Betty Ray McCain Gallery is nestled within the Duke Energy Center for the Performing Arts, and is the proud home of the North Carolina Artists Exhibition, a collection of work by state artists, selected each year by respected local museum and gallery directors from hundreds of submissions. For info contact Susan Garrity by e-mail at (artistsexhibition@gmail.com). Hours: during performances or call. Contact: call 919/831-6060 for hours and directions.

Rocky Mount

Mims Art Gallery, Dunn Center for the Performing Arts, NC Wesleyan College Campus, 3400 N. Wesleyan Blvd., Rocky Mount. **Through Oct. 29** - "A Journey Into My Parallel Universe," featuring works by Gayle Blackerby. Blackerby will be taking us on "a journey into her parallel universe in a search for infinity through abstract impressionist painting." Hours: Mon.-Fri., 9am-5pm & Sat., 9am-noon. Contact: call 252/985-5268 or at (www.ncwc.edu/Arts/Mims/).

North Civic Gallery, Dunn Center for the Performing Arts, NC Wesleyan College Campus, 3400 N. Wesleyan Blvd., Rocky Mount. **Civic Gallery, T -** ". Hours: Mon.-Fri., 9am-5pm & one hour before performances. Contact: call 252/985-5268 or at (www.ncwc.edu/Arts/Mims/).

Rutherfordton

Rutherford County Visual Arts Center & Gallery, 160 N. Main Street, at the intersection of W. Court St., Rutherfordton. **Ongoing** - Offering a changing exhibit of 2D and 3D art including oils, watercolor, scratchboard, calligraphy, fiber, wood, glass, pottery and fine craft by local artists/fine crafters. Hours: Tue.-Sat., 10am-3pm. Contact: 828/288-5009 or at (<http://www.rcvag.com/>).

Salisbury/Spencer

Waterworks Visual Arts Center, 123 E. Liberty St., Salisbury. **Through Jan. 3, 2018** - "In Stitches," will feature works by Columbia, SC, artist, Susan Lenz's "Stained Glass" and "In Box" fiber series. Waterworks' executive director, Anne Scott Clement challenged Lenz to approach the 24-foot back wall with a totally different series ... "CIRCLES", a celestial installation of orbs in response to the coming summer's total solar eclipse. Hours: Mon.-Fri., 10am-5pm; Thur. till 7pm & Sat., 11am-3pm. Contact: 704/636-1882 or at (www.waterworks.org).

Seagrove Area

Carolina Bronze Sculpture Garden, 6108 Maple Springs Road, Seagrove. **Ongoing** - The Carolina Bronze Sculpture Garden is a natural and landscaped area overlooking a beautiful 1.25 acre pond. A walking trail loops around the pond with benches and a picnic area along the trail. The Sculpture Garden collection consists of donated and loaned sculptures from emerging and established artists working in all 3D media suitable for the outdoors. There are currently 19 sculptures installed around the pond. The landscaped and natural areas have a focus on NC native plants and trees. As an extension of this park, a sculpture is installed in the downtown area of Seagrove. Hours: Mon.-Fri., 8:30am-4pm. Contact: 336/873-8291 or at (www.cbsculpturegarden.com).

Seagrove Area Pottery Center (Not the NC Pottery Center), 122 E. Main St., Seagrove. **Ongoing** - The former museum organization was founded twenty-five years ago in Seagrove, and is dedicated to preserving and perpetuating the pottery tradition. We strive to impart to new generations the history of traditional pottery and an appreciation for its simple and elegant beauty. A display of area pottery is now offered in the old Seagrove grocery building. Hours: Mon.-Sat., 9:30am-3:30pm. Contact: 336/873-7887.

North Carolina Pottery Center, 233 East Avenue, Seagrove. **Through Nov. 25** - "WHAT'S FOR DINNER?". Handmade dinnerware does more than feed a hungry body—it provides the user with visual nourishment and tactile delight. "What's for Dinner?" celebrates the connection between ceramics and food through the work of twenty North Carolina makers, including: Cady Clay Works, Courtney Martin, David Vorhees, Dean & Martin Pottery, Doug Dotson, East Fork Pottery, Great White Oak Gallery, HAAND, Heather Mae Erickson, Jugtown Pottery, Mangum Pottery, Melissa Weiss, New Salem Pottery, Nick Moen Studios, Nine Toes Pottery, Original Owens Pottery, Sedberry Pottery, Stanley Mace Andersen, Tom Gray, and Westmoore Pottery. **Ongoing** - Featuring permanent and changing exhibits on the history of North Carolina pottery, "The North Carolina Pottery Tradition" and "Seagrove Area Pottery". The Center also offers information on activities, maps and information about the potteries located in the Seagrove area and across the state. A display of representative works from more than 90 area potteries is also offered. Hours: Tue.-Sat., 10am-4pm. Contact 336/873-8430 or at (www.ncpotterycenter.org).

STARworks Center for Creative Enterprise, 100 Russell Drive, just seven miles south of Seagrove in Star. **Oct. 7, from 10am-4pm** - STARworks Pumpkin Patch. Choose from 3,000 hand-blown glass pumpkins and gourds in all sizes, shapes and color combinations. **Ongoing** - The gallery features hand crafted glass and ceramic items. The gallery will feature work from STARworks staff artists, interns and resident artists, as well as local ceramic artists and glass artists from across the Southeast. Gallery Hours: Mon.-Sat., 9am-5pm. Contact: (www.starworksncc.org).

Siler City

Throughout Siler City, Oct. 20, 6-9pm - "Siler City Art Walk," featuring exhibits at many of the city's exhibit spaces, live entertainment, artist demonstrations, food, local wine or beer tastings, offered in town on the 3rd Fri. of the month. Hosted by the North Carolina Arts Incubator. Contact: 919/663-2072 or at (www.ncartsincubator.org).

North Carolina Arts Incubator Gallery, 223 N Chatham Ave., Siler City. **Ongoing** - Featuring the handcrafted work of over 30 Incubator and regional artists in a variety of mediums including painting, pottery, stained and fused glass, fabric art, cards, photography, wood, jewelry, metal, baskets and more. There is a broad range of items and prices. Hours: Mon.-Sat., 10am-5pm; & 3rd Fri., 10am-9pm. Contact: 919/663-2072 or at (www.ncartsincubator.org).

PAF Gallery, 223 N Chatham Ave., Siler City. **Ongoing** - A gallery featuring works by local and regional artists. Hours: 3rd Fri. 6-9pm. Contact: 919/663-2072 or at (www.ncartsincubator.org).

Southport

Franklin Square Gallery, 130 E. West St., Southport. **Ongoing** - Works by members of the Associated Artists of Southport. Hours: Mon.-Sat., 10am-5pm. Contact: 910/457-5450 or at (www.franklinsquaregallery.com).

Spruce Pine



Work by Marobeth Ruegg

TRAC Arts Center, Toe River Arts Council. 269 Oak Avenue, Spruce Pine. **Oct. 7 - Nov. 4** - "Toe River Arts Fall Group Show," features diverse works submitted by local Mitchell-Yancey county artists and those from Asheville, Mt. Airy, Cary and into Tennessee. Awards totaling \$1,000 will be determined by votes cast by visitors during the four-week run and announced following the close of the show. Toe River Arts will host a reception from 5 to 7pm on Friday, Oct. 13. Hours: Tue.-Sat., 10:30am-5pm. Mon.-Sat., 10:30am-5pm. Contact: 828/682-7215 or at (www.toeriverarts.org).

ALTERNATE ART SPACES - Spruce Pine Cross Street Building, 31 Cross St., Spruce Pine. **Oct. 14 & 15, 10am-5pm** - "11th an-

continued on Page 58