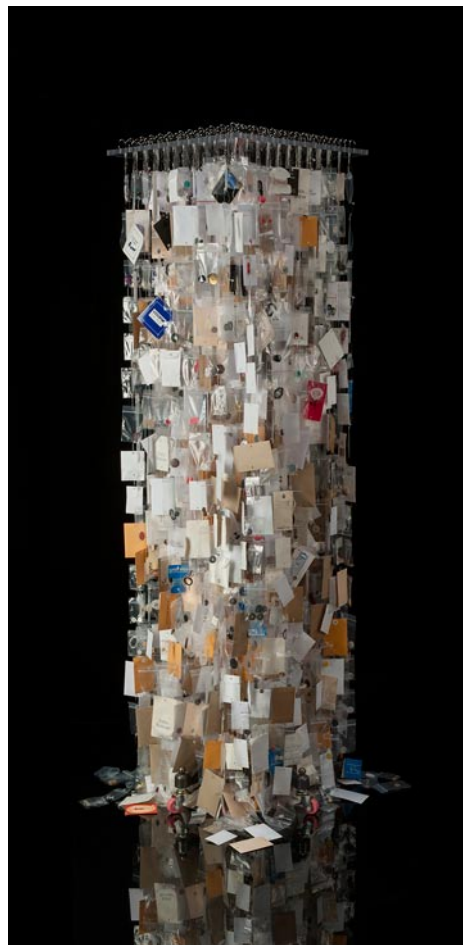


SC Institutional Galleries

continued from Page 43



Work by Fleming Markel

Lander Fine Art Gallery, in the Josephine B. Abney Cultural Center, Lander University, Greenwood. **Through Oct. 6** - "Fleming Markel: Pent Up Pink". Markel's artist's statement says, "Our culture perpetuates many traditions and beliefs within our governing, religious and social institutions. Many of these traditions and beliefs are myths, unfounded notions. Yet, these myths exert control on our daily lives, and on our world view. By constructing objects that question the veracity of those myths, I try to counteract their social control. I juxtapose disparate materials to make sculpture with titles that offer questions, but no answers. My sculpture, while humorously off-kilter, might also be uncomfortably confrontational." Hours: Mon.-Fri., 10am-5pm. Contact: Lander College Public Affairs at 864/388-8810.

Hartsville

Cecelia Coker Bell Gallery, Coker College, Gladys Coker Fort Art Building, near Third Street (on the Home Avenue side), Hartsville. **Through Oct. 20** - "Constrictions," featuring works by Monika Meler. Meler is originally from Brodnica, Poland; she received her BFA in printmaking with a minor in art history from the Milwaukee Institute of Art and Design. She received her MFA at the Tyler school of Art. She is currently Associate Professor of Art at the University of the Pacific in California. Hours: Mon., Wed., & Fri., 10am-4pm and Tue. & Thur., 10am-8pm. Contact: 843/383-8156 or at (<http://www.wix.com/cokerartgallery/ccgb>).

Hartsville Museum and Sculpture Courtyard, 222 North Fifth Street, corner of Fifth Street and Home Avenue, Hartsville. **W. Reaves McCall Gallery, T -** **Ongoing** - Housed in a 1930's Post Office Building, the museum has kept many of the unique architectural features of the building. The skylight, original to the building, has been retrofitted with stained glass panels depicting the flora and fauna significant to the area. The Sculpture Courtyard added in 2000 features many different types of sculpture. The Showcase Gallery presents special exhibits focusing on history, the arts or present day events. Hours: Mon.-Fri., 10am-5pm (closed from noon-1pm on Fri.) and Sat., 10am-2pm. Contact: 843/383-3005 or at (www.hartsvillemuseum.org).

Hilton Head Island Area

Art League of Hilton Head Gallery, Art Center of Coastal Carolina, 14 Shelter Cove Lane, Hilton Head Island. **Oct. 7, beginning at 2pm** - Hilton Head Art Auction, presented by Morris & Whiteside Auctions, LLC. A preview of works will be offered from Oct. 3-6, from 10am-4pm and Oct. 7, from 10am-2pm. For over fifteen years, Morris & Whiteside Auctions, LLC has produced premier fine art auctions on Hilton Head Island and in Charleston, South Carolina. Offering significant paintings, sculpture and vintage prints by deceased and contemporary masters of the South, the annual Fall event attracts an extensive database of proven collectors from throughout the United States. The firm has over 100 years of auction experience, providing full-service absentee and telephone bid arrangements and in-house art transporta-

tion for crating, shipping and delivery. With offices at 220 Cordillo Parkway, Hilton Head Island, SC, Hilton Head Art Auction, LLC seeks consignments with fair, simple and straightforward commission rates and no hidden fees. Internet bidding via invaluable at (www.invaluable.com). For info call 843/785-2318 or visit (www.morriswhitesideauctions.com).

Art League of Hilton Head Gallery, at the Arts Center of Coastal Carolina, 14 Shelter Cove Lane, Hilton Head Island. **Oct. 10 - Nov. 4** - "Side by Side," featuring works by Pepi McNair and Bill Bosley. A reception will be held on Oct. 12, from 5-7pm. Enliven your spirit and enrich your soul with the artwork of two Lowcountry neighbors side by side. Pepi McNair, a painter, and Bill Bosley, a photographer, are passionate about the beauty of the Lowcountry and express that passion through their work. McNair moved to Hilton head in 1979. She began painting as a teenager and received formal training at NC State and the Ringling School of Art. Pepi considers her painting as "a peaceful way to spend time and an expression of love". Bosley, originally from Toronto, Canada, moved to Hilton Head in 1982. His adventures as a wildlife and landscape photographer began when he received a professional camera as a gift in 2014. He says the Lowcountry offers "unlimited opportunity to enjoy amazing wildlife". Hours: Mon.-Sat., 10am-4pm. Contact: 843/681-5060 or at (www.artleaguehi.org).

Hilton Head Regional Healthcare Gallery, Coastal Discovery Museum, at Honey Horn, off Highway 278, across from Gumtree Road, Hilton Head Island. **Through Oct. 29** - "Escape Artists," featuring works by the Art Beyond Tradition group. The 12 artists of this group, which has been exhibiting here since 2006 will present their biennial exhibit of abstract art -- art that grows out of the best art traditions of both western and eastern art, but which aims at pushing boundaries of the expected in unique ways. They include: Earline Allen, Cindy Chiappetta, Margaret Crawford, Jo Dye, Vickie Jourdan, Mark Larkin, Mary Lester, Sharon Collings Licata, Lynne Riding, Mary Sullivan, Donna Varner, and Arla Crumlick Wible. **Ongoing** - This beautiful 69-acre site will serve as the Museum's base for programs highlighting the cultural heritage and natural history of the Lowcountry. And, it will provide a signature venue for community events for people of all ages. The opening includes the renovation of a 6,000 sq. foot former hunting retreat, renamed the "Discovery House," containing the Museum's new interactive exhibits, temporary gallery space and community meeting rooms. Hours: Mon.-Sat., 9am-4:30pm & Sun., 11am-3pm. Contact: 843-689-6767 ext. 224 or at (www.coastaldiscovery.org).

Lake City

Jones-Carter Gallery, 105 Henry Street, next to The Bean Market, Lake City. **Through Dec. 3** - "South Carolina Arts Commission Fellows 2018 Exhibition". The SC Arts Commission Board awarded fellowships to Linda Fantuzzo of Mt. Pleasant (Visual Arts), Jason Gourdine of Moncks Corner (Media Production), Leasham Hopkins of Columbia (Media Screenwriting) and Elizabeth Keller of Conway (Craft). Fellowships recognize and reward the artistic achievements of our state's exceptional individual artists, selected through a highly competitive, anonymous process based solely on artistic excellence. This exhibition is supported by the South Carolina Arts Commission, South Carolina Arts Foundation, and First Citizens Bank. Hours: Tue.-Fri., 10am-6pm & Sat., 11am-5pm. Contact: call 843-374-1505 or at (<https://www.facebook.com/JonesCarterGallery/>).

Lancaster

USC Lancaster Native American Studies Center, 119 South Main Street, Lancaster. **Oct. 5, from 4:30-7pm** - Join the Center for an evening of demonstrations, exhibit tours, food, Native American music, entertainment, and more celebrating the Center's fifth anniversary. Throughout the Center's galleries, celebration-goers can enjoy basket-weaving and Catawba pottery demonstrations, and flute and drum music from Cathy Nelson and Keepers of the Word. Beckee Garris, a member of the Catawba Nation, also will offer an invocation in both the English and Catawba languages. **Duke Energy Gallery, Through Mar. 1, 2018** - "Piedmont American Indian Association's Tribal Exhibit". Members of the Piedmont American Indian Association - Lower Eastern Cherokee Nation of South Carolina have put together an exhibit that represents their tribe, history, and culture. Curated by Chief Gene Norris and Victoria Norris, this exhibit is the second at the Center to be curated by one of the South

Carolina tribes. **Rose Gallery, Through Feb. 1, 2018** - "Clay Pit to Fire Pit: From the Beginning to the End," featuring an exhibit of works by Keith Brown's artist-in-residence. Funded, in part, by the South Carolina Arts Commission, the Native American Studies Center's artist-in-residence program allows the NASC to bring in Native American Artists to work within our galleries providing demonstrations and lectures for students and visitors. This exhibition showcases the work completed during our third residency with Keith "Little Bear" Brown, along with complimentary pieces from his portfolio that influenced the pottery created at the Center. **Ongoing** - The Center is 15,000 square foot facility in historic downtown Lancaster. Guests will have the opportunity to tour the NAS Center's gallery spaces, archives, classrooms, and archaeology, language, and audio-visual labs. Home to the world's largest collection of Catawba Indian pottery, the NAS Center will offer exhibits of regional Native American Art, classes and programs focused on Native American history, culture, archaeology, folklore, and language. Hours: Tue., Wed., Fri., & Sat., 10am-5pm; Thur., 10am-7pm; of Mon. by appt only. Contact: 803/313-7172 or visit (<http://usclancaster.sc.edu/NAS/>).

Laurens

The Artist's Coop, 113 E. Laurens St., on the Historic Downtown Square., Laurens. **Ongoing** - Featuring works by over 50 cooperative members, including paintings, jewelry, pottery and weavings. Also art classes for children and adults. Hours: Tue.-Fri., 10am-5:30pm & Sat., 10am-3pm. Contact: 864/984-9359 or at (www.laurensartistscoop.org).

Marion

Marion County Museum, 101 Wilcox Avenue, Marion. **Ongoing** - Changing exhibits are displayed in two galleries downstairs. These can be local exhibits, or traveling exhibits from the South Carolina State Museum's collections. The Magnolia Room of the museum is furnished with lovely antiques once used in the Aiken-Rhett House in Charleston. These pieces were a gift from the Charleston Museum. The upstairs galleries feature a turn-of-the-century classroom, a farm room, and a variety of displays concerning the people and places of Marion County. Hours: Tues.-Fri., 9am-noon & 1-5pm. Contact: 843/423-8299 or at (<http://www.marionsc.org/museum>).

McCormick

The MACK, McCormick Arts Council Gallery, 115 Main Street, located in the historic Keturah Hotel, McCormick. **Ongoing, The Artisans Gallery Shop at the MACK** - Featuring works of over 30 artisans including paintings, pottery, jewelry, jackets, gourds, woodworking, textiles, soaps and more. Hours: Mon.-Sat., 10am-4pm. Contact: 864/852-3216 or at (<http://mccormickarts.org/>).

Mount Pleasant

Sweetgrass Cultural Arts Pavilion, Mount Pleasant Memorial Waterfront Park, 99 Harry M. Hallman, Jr. Blvd., under the bridge, Mount Pleasant. **Ongoing** - The pavilion is a tribute to the generations of men and women who have carried on this African tradition for more than three centuries. Kiosks and panels tell the history of this unique craft, and the open-air facility provides a venue for local basketmakers to display and sell their wares. Hours: daily, 9am-5pm. Contact: 800/774-0006 or at (www.townofmountpleasant.com).

ALTERNATE ART SPACES - Mt. Pleasant area **Arts Council of Dewees Island**, 273 Old House Lane, Dewees Island. **Through Oct. 7** - "Flocks & Schools," featuring works by Nancy Hilliard Joyce. During Labor Day weekend, artist will partner with Dewees Island, a 1200 acre private island held in permanent conservation by South Carolina Department of Natural Resources, to display over 20 original works of art which include her paintings of both flocks of birds and schools of fish. 2017 marks an important year for Dewees Island as it is the 25th Anniversary as a community and marks the year they will undergo a 217 acre wetlands habitat restoration for the primary benefit of birds and fish. In this project, the island has ten prestigious conservation partners including The Nature Conservancy, two departments of the US Fish & Wildlife Services and South Carolina Department of Natural Resources. Hilliard Joyce will donate 30% of her sales and 10% to the Dewees Island Conservancy as well as 20% to the Arts Council on Dewees Island. The Dewees Island ferry runs year round from 41st Street on the Isle of Palms on the hour. It leaves Dewees on the half hour and runs on Saturdays from 7am to 12:30am. Visitors are met with golf carts at the ferry landing and it is a 3 minute ride to the Arts Council. Hours: call about hours. Contact: 843/886-6624 or Toll Free at 800/693-4876.

Myrtle Beach / Grand Strand

Chapin Park, 1400 Kings Hwy and 16th Ave. N., Myrtle Beach. **2017 Dates include: Oct. 7 & 8; and Nov. 4 & 5** - "45th Annual Art in the Park - Show & Sale," sponsored by Waccamaw Arts and Crafts Guild. We will have over 60 artists from the East Coast, as far away as TN, with about 20 of those artists from our local area. Typical art will include paintings, woodworking, photography, jewelry, fabric, glass, metal, pottery, leather and stone. Free admission. Child and Pet Friendly! For info call JoAnne Utterback, 843/446-3830 or at (www.artsyparksy.com).

Valor Memorial Park, 1120 Farrow Parkway, The Market Common, Myrtle Beach. Valor Park, at The Market Common, in Myrtle Beach. **Nov. 11 & 12** - "Waccamaw Arts and Crafts Guild's 45th Annual Art in the Park". We will have over 60 artists from the East Coast and as far away as Tennessee with about 20 of those artists from our local area. Typical art will include paintings, woodworking, photography, jewelry, fabric, glass, metal, pottery and stone. No admission charge. Child and Pet Friendly! Contact: JoAnne Utterback at 843/446-3830 or (www.artsyparksy.com).

Franklin G. Burroughs • Simeon B. Chapin Art Museum, 3100 South Ocean Blvd., beside Springmaid Beach, Myrtle Beach. **Through Dec. 14** - "Jocelyn Châteaupert: The South Carolina Arts Commission Turns 50," featuring a site-specific installation by Châteaupert made of suspended three-dimensional sculptures the artist creates from handmade paper. The exhibit is one of fifteen exhibitions taking place throughout South Carolina of current and past visual artist fellowship recipients. **Through Dec. 14** - "Grand Strand Collects," presents more than 200 works of art varying from ancient Egyptian artifacts and historical prints to modern and contemporary sculpture and paintings, on loan from 49 private Grand Strand collections. For the passionate collector, art is far more than something beautiful to put on the wall. Each piece comes with a story: where and when it was purchased, perhaps an event or occasion the item commemorates. Possibly there was the thrill of the hunt: to find a work by a particular artist or with a special subject. Hours: Tue.-Sat., 10am-4pm & Sun., 1-4pm. Contact: 843/238-2510 or at (www.myrtlebeachartmuseum.org).

Seacoast Artists Gallery, located at The Market Common, 3032 Nevers Street, Myrtle Beach. **Oct. 3 - 17** - "14th Annual Fall Arts Show & Sale". Featuring original work by over 70 local artists. An awards reception will be held on Oct. 6, from 5-7pm. **Ongoing** - features the works of over 70 local artists of the Seacoast Artists Guild of South Carolina, a nonprofit visual arts organization dedicated to advancing excellence in the visual arts through teaching, exhibits, workshops and special events. Guild membership benefits include monthly meetings, programs & presentations; and opportunities to participate in Spring & Fall Art Shows and Web Gallery. Artwork includes oil, acrylic, watercolor, fiber art, mixed media, clay, metal engraved jewelry, sculpture, assemblage, and fine art photography. Art classes and workshops offered. Hours: Mon.-Sat., 10am-6pm and Sun., noon-6pm. Contact: 843.232.7009, e-mail at (seacoastartistsgallery@gmail.com) or at (www.seacoastartistsguild.com).

Newberry

Wessels Library Gallery, Wessels Library, Newberry College, Newberry. **Through Nov. 15** - "Musings: Reflections on Line and Color," featuring works by Bonnie Goldberg. Abstract figurative artist Bonnie Goldberg will exhibit new works on paper and canvas that depict the model "as it moving in space". Hours: Mon.-Thur., 7:30am-11pm; Fri., 7:30am-5pm; and Sun., 4-11pm. Contact: 803/321-5229.

North Charleston

City of North Charleston Art Gallery, North Charleston Performing Arts Center & Convention Center Complex, common walkways, 5001 Coliseum Drive, North Charleston. **Oct. 5 - 31** - "Recent Paintings by Bradley Carroll". A reception will be held on Oct. 5, from 5pm. Carroll of Mount Pleasant, SC, will display recent oil and acrylic paintings that focus on the use of light to capture cityscapes in downtown Charleston. **Oct. 5 - 31** - "Ever Emerging," featuring a collection of mixed-media collage works that visually express the elements of life that connect us as human beings by Sharon Robinson. A reception will be held on Oct. 5, from 5pm. Hours: Mon.-Sat., 9am-5pm. Contact: 843/740-5854, or at (<http://www.northcharleston.org/Residents/Arts-and-Culture.aspx>) or (<http://northcharlestonartsfest.com/>).

ALTERNATE ART SPACES - North Charleston **Riverfront Park**, 1001 Everglades Dr., The Navy Yard at Noisette (former Charleston Naval

continued on Page 45