

SC Commercial Galleries

continued from Page 54

pm. Contact: 843/379-4774 or at (www.ipsgallery.com).

Indigo Gallery, 809 Bay St., Beaufort. **Ongoing** - Featuring a gallery of fine art, including a unique selection of paintings by local and regional artists. Represented are: Sandra Baggette, Alison Crossman, Gloria Dalvini, Janet Mozley, and Polly Swenson. Also: Peter Pettegrew, Kelley Sanford & Liz Reitz. Fine custom framing is also available. Hours: Mon.-Sat., 10am-5pm. Contact: Janet Deaton 843/524-1036.

Longo Gallery, 103 Charles Street, Beaufort. **Ongoing** - Featuring new works including paintings, collages and constructions by Eric Longo & sculptures by Suzanne Longo. Hours: Mon.-Sat., 10am-5pm. Contact: 843/522-8933.

Ly Bensons Gallery & Studio, 211 Charles Street, Beaufort. **Ongoing** - Featuring the exhibits, "The Gullah/African Link" and "Out of Africa," featuring rare Shona Verdite sculptures by various artists from Zimbabwe, Africa, and original photographs by Gullah photographer and gallery owner Rev. Kenneth F. Hodges. Also, an array of antiques, batiks, and artworks for the discerning collector. Hours: Mon.-Sat., 10am-5:30pm. Contact: 843/525-9006 or at (www.lybensons.com).

Rhett Gallery, 901 Bay St., Beaufort. **Ongoing** - Featuring prints and paintings of the Lowcountry by four generations of artists, wildfowl carvings by William Means Rhett, antique prints & maps, Audubons, and Civil war material. Hours: Mon.-Sat., 9am-5:30pm; Sun. 11am-2pm. Contact: 843/524-3339 or at (www.rhettgallery.com).

The Craftseller, 818 Bay St., Beaufort. **Ongoing** - Featuring unique works by American artists in pottery, jewelry, metal, glass, textiles, wood, painting and kaleidoscopes. Hours: Mon.-Sat., 10am-6pm and Sun., noon-4pm. Contact: 843/525-6104 or at (www.craftseller.com).

Belton

Carlene Shuler Brown Gallery, 3605 Old Williamston Road, Belton. **Ongoing** - Original watercolor paintings and prints by Carlene Shuler Brown. Also acrylic collages and paper collages using stained papers, oriental papers and lace papers by Carlene Shuler Brown. Commissioned paintings Painting and drawing classes are offered. Custom framing is offered also. Hours: Mon.-Fri., 10am-5pm or by appt. Contact: 864/225-3922.

Bluffton

Calhoun Street Gallery, 44 Calhoun Street, Bluffton. **Ongoing** - Featuring SC artists Michael Story and Jane Word, and local Bluffton artists Robert Sefton, Judith Beckler, Jay Kenaga, Linda Schwartz, Rima Bartkiene, as well as 18th & 19th century antique art, and many more. Hours: Mon.-Sat., 11am-5pm & Sun., noon-3pm. Contact: 843/837-4434 or at (www.redschoolhouseantiques.com).

Four Corners Art Gallery and Fine Framing, 1263 May River Rd., Historic District, Bluffton. **Ongoing** - Featuring works by 12 artists with an especially local flavor. The works are in acrylic, oil, mixed media, pen and ink, pottery and wire sculpture. A real treat. We have a fine collection of custom picture frame mouldings and an experienced staff to work with anything from the unusual to the museum treated piece. Hours: Mon.-Fri., 10am-5:30pm & Sat., 11am-2pm. Contact: 843/757-8185.

La Petite Gallerie, 56 Calhoun Street, adjacent to "The Store" in that charming and historic building Bluffton. **Ongoing** - Featuring works by five local artists that have combined forces to show their work. It is "an intimate little gallery with fine local art," as the owners proclaim. It features works in oil, acrylic, pastel, watercolor and mixed media by Peggy Duncan, Emily Wilson, Don Nagel, Margaret Crawford and Murray Sease. There is also lovely blown glass art by the Savannah artists at Lowcountry Glass, and whimsical and soulful clay pieces by sculptor Toby Wolter. Hours: Tue.-Sat., 11am-5pm. Contact: 843/304-2319 or e-mail at (lapetitegalerie9@gmail.com).

Maye River Gallery, 37 Calhoun St., Bluffton. **Ongoing** - Featuring works by: Anne Hakala, Barb Snow, Bobsy Simes, Carrol Kay, Diane Dean, Kelly Davidson, Donna Ireton, Jo dye, Joyce Nagel, Cora Rupp, Laura Silberman, Kathy Tortorella, Judy Saylor McElynn, Marci Tressel, Susan Knight, Vickie Ebbers, Julie Yeager. Hours: Mon.-Sat., 10am-5pm. Contact:

843/757-2633 or at (<http://www.mayerivergallery.com>).

Pluff Mudd Art, 27 Calhoun St., Bluffton. **Ongoing** - Featuring works by Terry Brennan, Bob Berman, Peggy Carvell, Laura Cody, Diane Dean, Cheryl Eppolito, Ed Funk, David Knowlton, Marilyn McDonald, Daurus Niles, Linda Patalive, Jim Renauer, Patti Seldes, Michael Smalls, Ellen Blair Rogers, Steve White, Pat Wilcox, Carol Williams and Irene K. Williamson. Hours: Mon.-Sat., 10am-5pm. Contact: 843/757-5590.

Preston Pottery Studio, 10 Church Street, Bluffton. **Ongoing** - Featuring above average pottery since 1973 by Jacob Preston. Hours: Tue.-Sat., 10am-5pm. Contact: 843/757-3084.

Camden

Artists' Attic, 930 S Broad St., Camden. **Ongoing** - Featuring a new frame shop and Saturday hours, along with our regular gallery, and cooperative open studios shared by 8 professional artists working in various mediums. Including Dot Goodwin, Jane Hannon, Ann Starnes, Emily Houde, Kathy Redner, Benira Sutphin, Tari Federer, and Deb Maza. Commissions are accepted. Hours: Mon.-Fri., 10am-4pm; Sat., 10am-3pm and by appt. Contact: 803/432-9955 or e-mail at (tarfederer@earthlink.net).

Dovetails, 645 Rutledge Street, Camden. **Ongoing** - Featuring custom bench crafted furniture by Jim Rose. Each piece is made by hand to the client's specifications. Jim works in a variety of woods including heart pine, walnut, cypress, maple, and cherry. Jim also works in exotic woods from South America and Africa. Visitors can watch individual pieces of furniture being built. Every piece has its own personality and becomes an instant heirloom. Hours: Mon.-Sat., 10am-5pm or by appt. Contact: 770/330-5000 or 803/446-3124.

Rutledge Street Gallery, 508 Rutledge St., Camden. **Ongoing** - Featuring original works of art from regional and national artists including Clara Blalock, Elizabeth Barber, Anne Bivens, Yong Chu Chang, Marjorie Greene, Joyce Hall, Seth Haverkamp, Carrie Payne, John Pototschnik, Bob Ransley, Dennis Snell, Maci Scheuer, and many more. Chinese Antique Furniture Pieces. Hours: Tue.-Sat., 11am-5pm. Contact: 803/425-0071 or at (www.rutledgestreetgallery.com).

Charleston

Broad Street, Charleston. Oct. 7, 5-7pm - "First Fridays on Broad," featuring an artwork with the following galleries: Ellis-Nicholson Gallery, Edward Dare Gallery, COCO VIVO, Mary Martin Fine Art, Spencer Galleries, Ella Walton Richardson Fine Art, and Martin Gallery. Contact: Jeannette Nicholson at 843/722-5353 or at (<http://www.charlestongalleryrow.com/>).

Throughout Historic downtown Charleston. Oct. 7, from 5-8pm - The Charleston Gallery Association ARTWALK. All Charleston Gallery Association galleries will be open with many of the artist in attendance along with refreshments served. Official Charleston Gallery Association ARTWALKS are held four times a year on the first Friday of March, May, October and December from 5 - 8pm. All CGA art galleries will be open. Contact: contact Julie Dunn, President, Charleston Gallery Association by e-mailing to (JulieDunn@CharlestonGalleryAssociation.com), calling 843/312-4550 or visit (www.CharlestonGalleryAssociation.com).



Work by Jennifer Smith Rogers

Anglin-Smith Fine Art, 9 Queen Street, corner of Queen & State Streets, Charleston. **Oct. 7 - 21** - "Twin Perspectives," featuring works by Shannon Smith Hughes and Jennifer Smith Rogers. A reception will be held on Oct. 7, from 5-8pm. The odds of having identical twins is about 3 in 1000, but what are the odds of these twins sharing the same profession in their careers? Shannon and Jennifer not only shared the womb, the cradle, their schools, their friends, their hobbies, their travels but also their chosen career in art. **Ongoing** - Featuring original works by Betty Anglin Smith, Jennifer Smith Rogers, Tripp Smith, Shannon Smith Hughes, Kim English, Darrell Davis,

Colin Page, Carl Plansky, and Victor Chiarizia. Hours: Mon.-Sat., 10am-5pm & Sun. 1-5pm. Contact: 843/853-0708 or at (www.anglinsmith.com).

Ann Long Fine Art, 54 Broad Street, Charleston. **Ongoing** - Classical Realism - still life, figurative work, landscapes and sculpture. The work represented by the gallery spans two generations of contemporary artists trained, in the most prestigious ateliers in Florence, Italy, to use the classical, realist techniques of European Old Master artists: oil paintings and drawings by Ben Long, as well as his studies for fresco; including Charleston artist Jill Hooper's still lifes and recent figure work; and many works by teachers of the Florence Academy, including its founder Daniel Graves. Also, represented are the figurative monotypes from the estate of deceased German Modernist Otto Neumann (1895 - 1975). Hours: Tue.-Sat., 11-5pm and by appt. Contact: 843/577-0447 or at (www.annlongfineart.com).

Artizom Framing & Gallery, 334 E. Bay Street, Suite J, Charleston. **Ongoing** - Featuring the contemporary artwork of Jackie and Charles Ailstock. Hours: Mon.-Fri., 10am-6pm or by appt. Contact: 843/723-3726 or at (www.artizom.com).

Atelier Gallery Charleston, 153 King Street, Charleston. **Ongoing** - The gallery's focus is to support and promote a variety of artists, from the Southeastern region, while merging the classics with the moderns. Traditional portraits and landscapes are displayed alongside contemporary canvases and sculptures. Hours: Mon.-Sat., 10am-6pm. Contact: 843/722-5668 or at (www.theateliergalleries.com).

Atrium Art Gallery, 61 Queen Street, Charleston. **Ongoing** - The gallery's open beautiful space in an historic Charleston building shows the works from over 10 artists offering contemporary, abstract, realism, landscape, lowcountry and photography. Hours: Mon.-Sat., 10am-6pm. Contact: 843/973-3300 or at (www.atriumartgallery.com).

Ben Ham Images, 416 King Street, Charleston. **Ongoing** - Ben Ham Images recently expanded to its new 2200 square feet of elegant gallery space in Charleston. Located downtown in the "Upper" King Street design district amidst world class shopping and restaurants, the Charleston gallery is truly a unique experience that transports you on a spectacular journey. Hours: Sun.-Mon., noon-5pm and Tue.-Sat., 11am-6pm. Contact: 843/410-1495 or at (<http://benhamimages.com/>).

Bird's I View Gallery, 119-A Church St., Charleston. **Ongoing** - Featuring originals and prints of bird life by Anne Worsham Richardson, as well as works by Nancy Rushing, Alice Grimsley, and Detta Cutting Zimmerman. Hours: Mon.-Sat., 10am-5pm. Contact 843/723-1276, 843/766-2108 or at (www.anneworshamrichardson.com).

Blue Heron Glass, 1714 Old Towne Rd., Northbridge Shopping Center near T-Bonz Steak House, Charleston. **Ongoing** - Whether by commissioning an exquisite stained glass panel for home or office, stocking up on hard-to-find supplies for the glass artist, or selecting the perfect gift, Blue Heron Glass is truly a place where light and color blend through imagination. We offer a wide variety of classes. Hours: Tue.-Fri., 10am-6pm, & Sat., 10am-3pm. Contact: 843/769/7299, or at (www.blueheron-glass.com).

Carolina Clay Gallery, Freshfields Village, 565 Freshfields Dr., located at the intersection of Seabrook and Kiawah Islands, 15 miles south of Charleston, Johns Island. **Ongoing** - Carolina Clay Gallery features the work of over 100 North and South Carolina potters and glass artists. Also available are the wonderful, whimsical life size copper frogs of Charles and Zan Smith. Hours: Mon.-Sat. 10am-8pm, & Sun., 11am-6pm. Contact: 843/243-0043 or at (www.carolinaclaygallery.com).

Carolina Antique Maps and Prints LLC, 91 Church St., Charleston. **Ongoing** - Featuring Antique Maps and Prints from the 16th to the 19th century. Hours: Tue.-Sat., 11am-5pm or by appt. Contact: 843/722-4773 or at (www.carolinaantiqueprints.com).

Charleston Art Brokers, AIM on King, 648 King Street, Charleston. **Ongoing** - Representing emerging and established fine art artists and photographers from Charleston and the Southeast. Hours: Mon.-Sat., 10am-5:30pm. Contact: (carol@charlestonartbrokers.com) or at (www.charlestonartbrokers.com).

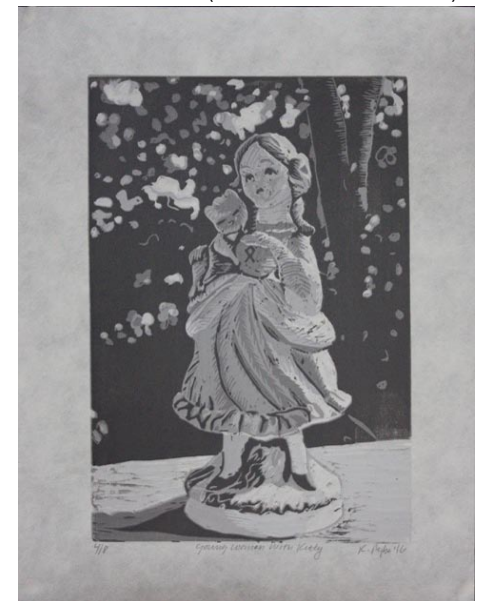
Charleston Crafts, 161 Church Street, across from Tommy Condon's, one block south of Market St., Charleston. **Ongoing** - Charleston Crafts is the longest operating craft cooperative in Charleston, featuring only items designed and created by SC artists. Gallery showcases a blend of contemporary and traditional craft me-

dia plus photography. Hours: Sun.-Thur., 10am-6pm & Fri.-Sat., 10am-8pm. Contact: 843/723-2938 or at (www.CharlestonCrafts.org).

COCO VIVO interior and fine art for relaxed living, Gallery Row, 25 Broad St., Charleston. **Ongoing** - Featuring works by Tony van Hasselt, aws, Mitch Billis, Patricia Roth and Roger Milinowski. Also representing jewelry designer Betty Holland and photographer Sandy Logan. Hours: Mon.-Sat., 9:30am-5:30 & Fri. till 8pm. Contact: 843/720-4027.

Coleman Fine Art, 79 Church St., Charleston. **Ongoing** - Both a fine art gallery, and a gold leaf studio, Coleman Fine Art has been representing regional and national artists for over 30 years. The Coleman studio produces the finest handcrafted gilt frames, and offers gilding restoration. The gallery specializes in Contemporary American paintings of both the American Impressionist and Realist schools. We proudly represent watercolor painter Mary Whyte, whose paintings focus on the life and culture of the indigenous people of the South Carolina Lowcountry. Currently we represent some of the country's leading plein-air painters, John Cosby, Gil Dellinger, Marc R. Hanson, Kevin Macpherson, Gregory Packard, George Strickland, and Mary Whyte. Hours: Mon., 10am-4pm; Tue.-Sat., 10am-6pm or by appt. Contact: 843/853-7000 or at (www.colemanfineart.com).

Cone 10 Studios, 1080-B Morrison Drive, in the heart of NoMo, Charleston. **Ongoing** - A studio and gallery of local potters and sculptors. We also offer classes in beginning to intermediate wheel throwing and clay sculpture. Hours: Mon.-Sat., 11am-5pm & Sun., 1-5pm. Contact: 843/853-3345 or at (www.cone10studios.com).



Work by Krista Ryba

Corrigan Gallery, 62 Queen Street, Charleston. **Oct. 5 - 31** - "Currently Extant," featuring works by Kristi Ryba. A reception will be held on Oct. 7, from 5-8pm. Ryba's works are always unique. They are slices of the 1950s' life raised to a royal level in the manner of Italian altarpieces. **Ongoing** - Contemporary fine art including paintings, photography, prints and sculpture. Now showing works by Manning Williams, Richard Hagerty, Joe Walters, Sue Simons Wallace, Gordon Nicholson, John Moore, William Meisburger, Mary Walker, Kristi Ryba, Paul Mardikian, Kevin Bruce Parent and Judy Cox. Located in the heart of the downtown historic district of Charleston's French Quarter. Artist at work on location - work in progress to be viewed. Hours: Mon.-Sat., 10am-5pm or by chance & appt. Contact: 843/722-9868 or at (www.corrigan-gallery.com).

Courtyard Art Gallery, 149 1/2 East Bay Street, Charleston. **Ongoing** - Featuring works by Veronique Aniel, Melissa Breeland, Mary Ann Bridgman, Renee Bruce, Beverly Brunswig, Wilma Cantey, Carole Carberry, Linda Churchill, Christine Crosby, Judy Jacobs, Alix Kassing, Jennifer Koach, Tug Mathisen, Yvonne Rousseau, Suzy Shealy, Coleen Stoioff, and Tom Tremaine. Hours: Mon.-Sat., 10am-5pm & Sun. noon-5pm. Contact: 843/723-9172 or at (www.courtyardartgallery.com).

Dog & Horse, Fine Art and Portraiture, & Sculpture Garden, 102 Church St. Charleston. **Oct. 7 - 29** - "Ready, Sit, Pose," featuring works by Roger Henry in celebration of the gallery's 15th Anniversary. A reception will be held on Oct. 7, from 5-8pm. Henry was the first to join the gallery stable and an inspiration for the owner, Jaynie Spector, because of his outstanding talent and originality. **Ongoing** - Did you know that many of the 30+ artists we represent paint people as well as animals? Portraits make a wonderful and unique gift and are a great way to commemorate a life event or honor a beloved pet. Visit the gallery in person or online and see a variety of styles and mediums. Hours: Mon.-Fri., 10am-5pm & Sat., 11am-5pm. Contact: 843/577-5500 or at (www.dogandhorsefineart.com).

continued on Page 56