

# SC Institutional Galleries

continued from Page 56

**Hyman Fine Arts Center**, Francis Marion University, Florence. **Through Oct. 3** - "World Without Walls," featuring ceramics by Hayley Douglas. Douglas is primarily a ceramic artist, but she also experiments in other mediums. As of May 2013, she received her Master's Degree in Ceramics at the University of South Carolina in Columbia, SC. She completed her Bachelors of Arts degree in 2009 at Francis Marion University in Florence, SC. She is currently continuing to explore her ocean-inspired concepts and pushing her experimentation to more cosmic levels. **Through Oct. 3** - "Empirical," featuring photography by Julie Mixon. Mixon is an image-based media artist that focuses on processes that merge analog and digital photography. Currently, Julie is an Assistant Professor of Photography at Francis Marion University in Florence, SC. She began her studies in photography as an undergraduate at Barton College where she received a Bachelor's Degree in Fine Arts. In 2004, she received her Master of Fine Arts Degree with a concentration in photography from East Carolina University. Hours: Mon.-Fri., 8:30am-5pm. Contact: 843/661-1385 or at (<http://departments.fmarion.edu/finearts/gallery.htm>).

## Fort Mill

**Historic District**, Fort Mill. **Oct. 5, from 10am-4pm** - "Art on Main," a Fine Art and Master Craft Festival. This year's festival is going to be an exciting one! In addition to all the very talented artists and craftsmen lining the street, we have a day filled with great entertainment, children's activities at the top and bottom of Main, and food vendors whose culinary delights will complement the downtown restaurants. We're planning a beautiful fall day after all the rain this summer and hoping for a great turnout of Fort Mill residents and guests from around the region. Prior to the festival on Saturday, The Art of the Knight Gala will be held on Friday evening, Oct. 4, at Knights Stadium. Tickets for the gala will go on sale so remember to get yours early! The food will be outstanding and we're very pleased to have Plair Band entertaining us for the evening. And it isn't too early to think holiday shopping -- get some great gifts at the live auction! Contact: 803/802-3646 or e-mail to ([Info@FortMillHistoryMuseum.org](mailto:Info@FortMillHistoryMuseum.org)).

**Fort Mill History Museum**, 310 N White Street, Fort Mill. **Through Nov. 9** - "Hugh White's Rent Book: An Introspection into Catawba Land Leases. Indian agent Hugh White's land lease rent book dates back to the late 1700's & early 1800's. The book documents and tracks land leases between the Catawba and white settlers in the greater York County area. **Ongoing** - Our mission is to promote the collection, preservation, educational interpretation, and display of those artifacts, documents, and events most representative of Fort Mill, South Carolina - its pre-history and history, its people and institutions, and its cultural and economic development. Hours: Wed.-Sat., 10am-4pm. Contact: 803/802-3646 or at ([www.fortmillhistorymuseum.org](http://www.fortmillhistorymuseum.org)).

## Gaffney

**Cherokee Alliance of Visual Artists Gallery**, 210 West Frederick Street, located in the former Old Post Office building one street over from the Main Street with the City of Gaffney Visitors Center, Gaffney. **Ongoing** - Featuring works in a variety of media by Cherokee County artists. Hours: Tue.-Fri., 8:30am-5pm & Sat., 9am-1pm. Contact: 864/489-9119 or e-mail at ([cavagallery@yahoo.com](mailto:cavagallery@yahoo.com)).

## Greenville

**Greenville**, 15-mile radius of downtown Greenville. **Nov. 2 & 3, 2013** - "12th Annual Greenville Open Studios," featuring a self-directed studio tour featuring 124 of Greenville's visual artists at work in their studios presented by the Metropolitan Arts Council. The tour will feature area artists with studios during the free weekend event. Hours: Sat., Nov. 2, 10am-6pm and Sun., Nov. 3, noon-6pm. Contact: 864/467-3132 or at ([www.greenvillearts.com](http://www.greenvillearts.com)).

**Downtown Greenville** - "First Fridays," featuring a gallery crawl presented on the first Fri, of the month from 6-9pm. Visit galleries throughout the downtown area. For info: ([www.fristfridaysonline.com](http://www.fristfridaysonline.com)).

**Baiden Gallery**, Herring Center for Continuing Education, Furman University, Greenville. **Through Oct. 31** - Featuring the Centers inaugural community art show. The art show highlights work from accomplished visual art instructors for Learning for You and the Osher Lifelong Learning Institute (OLLI), and selected student participants from Bridges to a Brighter

Future. Hours: Mon.-Fri., 8:30am-4:30pm. Contact: Furman's News and Information Office at 864/294-3107.

**Clemson University's Center for Visual Arts - Greenville**, The Village of West Greenville, 1278 Pendleton St., two story yellow brick building on corner of Pendleton St. and Lois Ave., Greenville. **Through Nov. 2** - "Sourcing New Mentors: Clemson Art Alumni Educating the Upstate". A reception and talk will be held on Nov. 1, beginning at 6:30pm. Capitalizing on the Art Department's theme for the year, 'Sourcing the Local' this exhibit features works from Clemson Art Alumni who are currently artists working as educators in upstate South Carolina. Featured artists are graduates of Clemson University's Master of Fine Arts program, each overlapping their experience by one or more exhibiting artists. Artists participating in the exhibition are Marty Epp-Carter ('09), Instructor at the SC Governor's School of the Arts in Greenville, SC; Michael Marks ('10), Adjunct Professor at Anderson University in Anderson, SC and Instructor at the S.C. Governor's School of the Arts; Elizabeth Snipes ('07), Assistant Professor at Lander University, Greenwood, SC; and Zane Logan ('12), Instructor at Greenville Technical College in Greenville, SC. Hours: Thur.-Sat., 1-6pm and on Frist Fridays, 1-9pm. Contact: call Gene Ellenberg at 864/656-3883 or e-mail to ([euberg@clemson.edu](mailto:euberg@clemson.edu)).

**Exhibition Corridor**, Art Wing, Fine Arts Center, Bob Jones University, Wade Hampton Boulevard, Greenville. **Nov. 5 - 7** - "BJU High School Festival". This exhibition showcases some 100 or more works in various media by outstanding young artists who visit the campus from all parts of the US for this annual competition. Hours: classroom hours. Contact: 864/242-5100, Ext. 2701 or at ([www.bjumg.org](http://www.bjumg.org)).

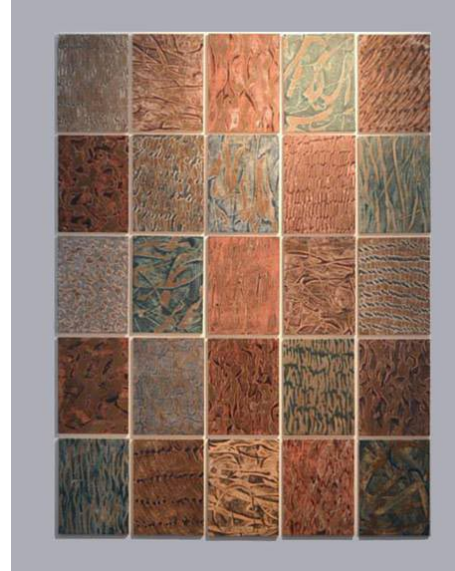
**Greenville County Museum of Art**, 420 College Street, Greenville. **Through Oct. 6** - "Southbound". Beginning in the 19th century and spanning the entire 20th century, this exhibition features important works by such artists as Thomas Hart Benton, John Ross Key, John Steuart Curry, Andy Warhol, Leo Twiggs, Lamar Dodd, and Roger Brown. Relying on stereotypes and symbolism, the images raise provocative questions about the Old South and the New. **Oct 6 - Dec 29** - "Wizards of Pop: Sabuda and Reinhart". Celebrated children's book creators Robert Sabuda and Matthew Reinhart combine their talents to create beloved and remarkable pop-up books. This exhibition, organized by the National Center for Children's Illustrated Literature in Abilene, Texas, features 80 original works from more than 16 of the duo's dynamic picture and pop-up books. Using a variety of media, including batik, mosaic, and delicate paper cutting, these artists have won numerous awards and garnered an international following for their magical pop-up creations. **Through Jan. 19, 2014** - "David Drake: Potter and Poet of Edgefield District". Experience the powerful story of David Drake, one of the 19th century's most remarkable artists. An enslaved African-American who worked as a "turner" in several pottery manufacturing facilities in South Carolina's Edgefield District, David Drake learned to read and write, dangerous and even illegal skills for a slave to possess. Apparently with his owner's approval, Drake openly expressed his literacy and his literary skills by inscribing original poems on many of the utilitarian works he created. Eight large pots, including three poem-incised vessels offer a captivating look at the inspiring figure of David Drake. **Ongoing** - "Andrew Wyeth: The Greenville Collection". The exhibition that brings Greenville national and international visitors has expanded to include eleven new paintings, including two temperas. Come see why the artist himself called it "the finest collection of his watercolors" at any museum. Admission: Free. Hours: Wed.-Sat., 10am-6pm and Sun., 1-5pm. Contact: 864/271-7570 or at ([www.greenvillemuseum.org](http://www.greenvillemuseum.org)).

**Lipscomb Gallery**, South Carolina Governor's School for the Arts and Humanities, 15 University St., Greenville. **Ongoing** - We feature several exhibitions throughout each year - our own students and faculty, plus many guest artists. Hours: Mon.-Fri., 10am-4pm. Visitors are asked to sign in at the Administration Building's front desk before entering campus. Contact: 864/282-3777 or at ([www.scgsh.state.sc.us](http://www.scgsh.state.sc.us)).

**Metropolitan Arts Council Gallery**, 16 Augusta Street, Greenville. **Ongoing** - Featuring works by Greenville area artists. Hours: Mon.-Fri., 8am-5pm. Contact: 864/467-3132, or at ([www.greenvillearts.com](http://www.greenvillearts.com)).

**Museum & Gallery**, Bob Jones University, Wade Hampton Boulevard, Greenville. **Ongoing** - "Likely and Unlikely Pairings," featuring a fascinating juxtaposition of art and mundane objects revealing a variety of viewpoints. Through this special comparative display, the unique presentation serves as an engaging tool for all viewers interested in understanding the many facets of art, culture, and thought. **Ongoing** - Permanent exhibition of the finest collection of religious art in America, including works by Rubens, Botticelli, and Van Dyck. Offering visitors a 60-minute audio-guided tour of over 40 favored works for a modest fee. Hours: Tue.-Sun., 2-5pm. Contact: 864/242-5100, Ext. 1050 or at ([www.bjumg.org](http://www.bjumg.org)).

**Museum & Gallery at Heritage Green**, Buncombe and Atwood Streets, downtown Greenville. **Through Apr. 31** - "Charles Dickens: The Continuing Victorian Narrative". The exhibit will incorporate the latest in museum technology along with 19th century paintings, period furniture, and interactive vignettes, all designed to elucidate the contrast of light and darkness that defined Victorian London. Admission: Yes. Hours: Tue.-Sat., 10am-5pm and Sun. 2-5pm. Contact: 864/770-1331 or visit M&G's website at ([www.bjumg.org](http://www.bjumg.org)).



Work by Jane Allen Nodine

**RIVERWORKS Gallery**, Suite 202, Art Crossing on the Reedy River in downtown Greenville. **Through Oct. 13** - "Jane Nodine - Thermal Response". Nodine's encaustic paintings ebb and flow through conventional descriptions of painting and relief sculpture just as the encaustic medium itself flows onto and across her surfaces. Hours: Tue.-Fri., 1-5pm and Sun., 1-5pm. Contact: call 864/271-0679 or e-mail to ([fleming.markel@gvltec.edu](mailto:fleming.markel@gvltec.edu)).

**Thompson Gallery**, Thomas Anderson Roe Art Building, Furman University, Greenville. **Through Oct. 5** - "Creating a Digital Museum: The Art and Theatre Work of Peter Wexler," featuring the works of this renowned New York theatre designer, producer, painter, sculptor and photographer. The exhibition is the product of an ambitious large-scale project involving the digitization of Wexler's professional art and design work by the Digital Collections Center of Furman's James B. Duke Library. The digitization project is made possible through a donation from Furman University trustee Todd Ruppert and his wife, Karen. **Oct. 9 - Nov. 1** - "Sarah Schuster, New Work: Descent". Schuster is an Associate Professor of Art, Oberlin College. A reception and gallery talk will be held on Oct. 24, from 6:30-8:30pm. Hours: M-F, 9am-5pm. Contact: 864/294-2074.

**Visual Arts Institute**, on the Greer Campus of Greenville Technical College about 4 miles north of Greer on Highway 290, Locust Hill Road, Taylors. **Through Oct. 13** - "Jane Nodine - Thermal Response". Nodine's encaustic paintings ebb and flow through conventional descriptions of painting and relief sculpture just as the encaustic medium itself flows onto and across her surfaces. Hours: Mon.-Fri., 8am-8pm. Contact: Laraine Wells, Administrative Assistant at 864/848-2023 or e-mail at ([laraine.wells@gvltec.edu](mailto:laraine.wells@gvltec.edu)).

**Centre Stage Theatre Gallery**, 501 River Street, Greenville. **Ongoing** - Featuring works by visual art members of MAC. Exhibits are offered in collaboration with the Metropolitan Arts Council. Hours: Tue.-Fri., 2-6pm & 2 hr. prior to shows. Contact: MAC at 864/467-3132 or at ([www.greenvillearts.com](http://www.greenvillearts.com)).

**Whole Foods Market**, café area, 1140 Woodruff Rd., Greenville. **Ongoing** - Featuring rotating exhibits of works by members of Upstate Visual Arts (changing every 60 days). Hours: Mon.-Thur., 8am-9pm; Fri. & Sat., 8am-10pm & Sun., 9am-9pm. Contact: 864/232-4433 or at ([www.upstatevisualarts.org](http://www.upstatevisualarts.org)).

## Greenwood

**CountyBank Art Gallery**, The Arts Center @ The Federal Building, 120 Main St., Greenwood. **Oct. 1 - 31** - "Independent Study," featur-

ing works by members of the Lander University Visual Art Faculty. A reception will be held on Oct. 17, from 5-6:30pm, with a live drawing performance by Dr. Tom Pitts and Doug McAbee. The exhibit will include creative work by Dr. Susan Deaton, Jon Holloway, Doug McAbee, Dr. Tom Pitts, Sandy Singletary, Jim Slagle, Elizabeth Snipes-Rochester and Fathima Nazim-Starnes. **Ongoing** - Featuring works by local and regional artists. Hours: Tue.-Fri., 10am-5pm. Contact: 864/388-7800 or at ([www.greenwoodartscouncil.org](http://www.greenwoodartscouncil.org)).

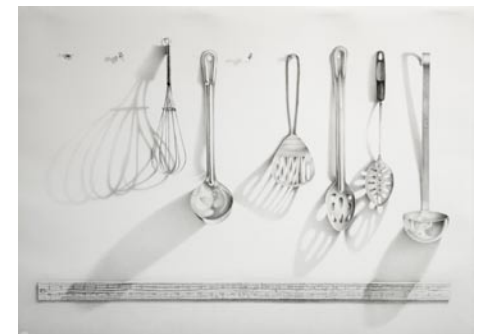


Work by Carey Smith

**Lander University Gallery**, in the Josephine B. Abney Cultural Center, Lander University, Greenwood. **Through Oct. 4** - "Conduit," a sculptural installation and performance by Todd Stewart. Stewart will transform the Lander University Gallery into a sculptural emotional gymnasium filled with interactive sculptures that invite the viewer to take part in the exhibition. Stewart's large sculptures stimulate the senses providing a visual, tactile and emotional experience. **Oct. 14 - Nov. 19** - "Magnanimous Body Talk," a joint exhibition by Denise Waldrep and Carey Smith. A reception and gallery talk will be held on Nov. 19, from 5-7pm. Hours: Mon. & Wed., 10am-7pm; Tue. & Thur., 10am-6pm; Fri., 10am-noon. Contact: Lander College Public Affairs at 864/388-8810.

## Hartsville

**Black Creek Arts Center**, 116 West College Ave., Hartsville. **Jean & James Fort Gallery**, **Through Oct. 25** - "Butterflies Are Free," featuring works by Bobbi Adams. **Ongoing** - Featuring works by local and regional artists. Hours: Tue.-Thur., 10am-1pm and 2-5pm; Fri., 10am-2pm and 1st Sat. of the month 10am-1pm. Contact: 843/332-6234 or at ([www.blackcreekarts.org](http://www.blackcreekarts.org)).



Work by John Rise

**Cecelia Coker Bell Gallery**, Coker College, Gladys Coker Fort Art Building, near Third Street (on the Home Avenue side), Hartsville. **Through Oct. 18** - Featuring an exhibit of mixed media paintings by John Chang. Chang's large calligraphic paintings combine the influence of America's Abstract Expressionist painters with the sacred nature of classical Chinese calligraphy. Chang notes, "Chinese students are conditioned to submit to authority, in part, through the rigorous requirement of learning to memorize and write several thousand characters flawlessly." **Oct. 21 - Nov. 15** - Featuring an exhibit of works by Savannah, GA, painter and draftsman, John Rise. A reception will be held on Oct. 21, from 7-8pm. Many in the art world know John Rise as the inventor of a stretcher bar system for painter's canvases and beautifully designed hardwood painter's easels. Students at Savannah College of Art and Design appreciate him as an award winning teacher of drawing. Many more know him as a painter and draftsman who values, in equal measure, finely honed artistic skills and intellectual depth. Hours: Mon.-Fri., 10am-4pm when classes are in session, or by appt. Contact: 843/383-8156 or at (<http://www.wix.com/cokerart-gallery/ccgb>).

**Hartsville Museum and Sculpture Courtyard**, 222 North Fifth Street, corner of Fifth Street and Home Avenue, Hartsville. **Ongoing** - Housed in a 1930's Post Office Building, the museum has kept many of the unique architectural features of the building. The skylight, original to the building, has been retrofitted with stained glass panels depicting the flora and fauna significant to the area. The Sculpture Courtyard added in 2000 features many different types of sculpture. The Showcase Gallery presents special exhibits focusing on history, the arts or present day events. Hours: Mon.-Fri., 10am-5pm (closed from noon=1pm on

continued on Page 58