



Giclée Fine Art Printers

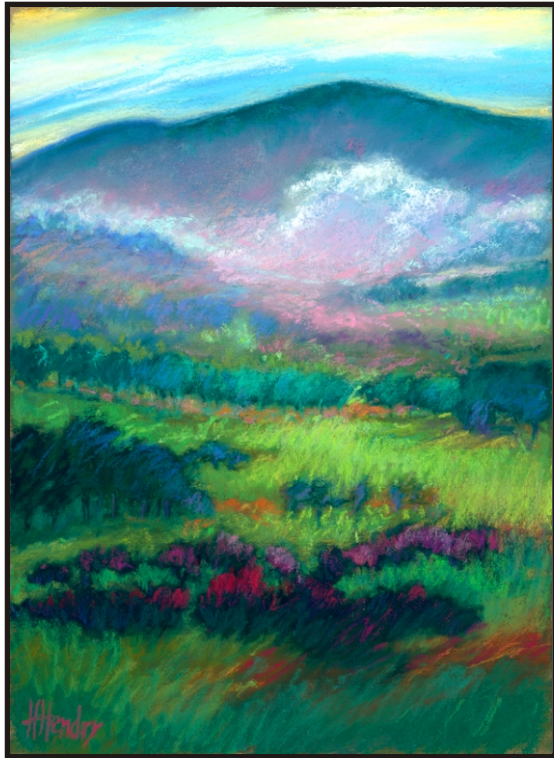
inkpressions®

www.inkpressionsllc.com



Attention Artists!

Your Artwork on Fine Art Canvas or Watercolor Paper



Heather Hendry

Summerville, SC

- Prints & Canvasses
- Scanning Services
- Full Color Banners
- Full Color Notecards & Rack Cards

Summerville, SC/Savannah, GA
(843) 821-8084

inkpress.sc@gmail.com

Serving the Art Community from New York to Charleston to Laguna Beach

CUSTOM PHOTO PRINTING

enlargements up to 44"x 96"
From negatives, slides, prints or digital files

TURN YOUR ARTWORK INTO T SHIRTS

FULL COLOR/SPOT COLOR/B & W

BRING OR SEND US YOUR FILE

NEW Quick Tees

SAME DAY NEXT DAY DAY AFTER

BY PHOTOGRAPHIK 821-3686

100 Old Trolley Rd. Summerville, SC

Charlotte, NC

(704) 780-3364

City of North Charleston Features Works by Redux Studio Artists

The City of North Charleston's Cultural Arts Department is pleased to announce that the North Charleston City Gallery will host its first annual *Redux Contemporary Art Center Studio Artists Exhibition*, on view in the North Charleston City Gallery, located at the Charleston Area Convention Center in North Charleston, SC, from Oct. 1 - 29, 2012. A reception will be held on Oct. 4, from 5-7pm.



Work by Jennifer Ervin

The group exhibition will feature an array of paintings, photographs, and mixed media pieces by artists currently participating in the studio program at Redux Contemporary Art Center in downtown Charleston, SC. The program offers emerging and mid-career artists full access to professional artist studios in an effort to grow and expand the contemporary art community in the area.

Xin Lu, Sarah Kalani, Camela Guevara, Savannah Rusher, and Jennifer Ervin are the studio artists participating in this inaugural exhibit. "We are excited to partner Page 30 - Carolina Arts, October 2012

with Redux for this first annual exhibition as it's a wonderful opportunity to expose residents and visitors of the North Area to some of the talented contemporary artists working locally," says Anne Trabue Nelson, Arts Coordinator with the City's Cultural Arts Department. "The diverse collection of works on display - Ervin's intimate photography, Rusher's nostalgic paintings, Guevara's delicate fiber works, Kalani's vibrant figures and landscapes, and Xin Lu's introspective monoprints - are a wonderful representation of the artistic innovation and creativity being fostered through Redux's studio program," she continues.

Sarah Kalani received a BA in Studio Art from the College of Charleston in 2008 with study abroad experience in Oahu, HI. Her most recent obsession is the common juxtaposition of nature and formations man-made. "Frequently, we see trees, marsh, river, beach, ocean, etc.; but, just as often as we see these natural things, we see bridges, power lines, street lamps, fire hydrants, and man-made things. Although, they have their stark differences, they are both necessary in our urban existence and worthy of glorification," she explains. You can often find Kalani practicing her passion in her Redux Annex Studio, at the beach, or literally running for inspiration.

Savannah Rusher grew up in Myrtle Beach, SC, where amusement parks, neon colors and the marketed theme of eternal summer were abundant. Through the eyes of a pre-teen, Rusher relishes in the absurdities of her surroundings and its own pop-culture. She works in a variety of mediums including printmaking, photography and acrylics to achieve her vision. Florescent pigments and salt water are frequently used materials that Rusher incorporates to create vibrant and nostalgic compositions.

Jennifer Appleton Ervin was born in 1971 in Pompton Plains, NJ, and later moved to South Carolina in her formative

continued above on next column to the right

years. Her camerawork has a modern sensibility shaped by both the formal studies of painting and graphic design. Ervin received an MFA in Graphic Design from Boston University and a BA in Painting from Francis Marion University. Her photographs are rich in sensory memory, often reflecting themes of solitude, intimacy, and the uniqueness of the ordinary.

Ervin actively exhibits her work in the Southeast and will participate in several upcoming group shows in the fall of 2012. Recent solo shows include, *Becoming* at Francis Marion University and *Moving Into Stillness* at the Saul Alexander Gallery. In 2009, she was awarded the Jo-Ann Fender Scarborough Award for work from her *Becoming* series. Ervin's most recent body of work, *This Side of Summer*, explores the ethereal world of childhood. The series was born from time spent with her children during the long, humid summer days at their family cabin in the woods and at their home in the Lowcountry. Photographs in *This Side of Summer* have been shot using a 1963 Polaroid Land 100 camera.

Camela Guevara received her BA from the College of Charleston. Her work as a seamstress informs her artwork, merging fashion and time-worn sewing techniques with fine art to create anachronistic, spare images with textiles. She is currently a studio renter at Redux Contemporary Art Center. Her work was recently featured in *Pinned Down*, a fiber exhibition at Stems in Charleston, SC.

Xin Lu was born in Fuzhou, China, but



Work by Savannah Rusher

moved to Eastern Tennessee with her family when she was seven. She has wanted to be an artist since the third grade. Lu received her BA from Vanderbilt University in Studio Art and Psychology. Her mixed media monoprints reflect the Asian aesthetics of simplicity and harmony and are often inspired by the many treasures she finds while roaming the streets of Charleston such as leaves, feathers, and moss. Lu's works are imbued with a sense of longing for a place to belong. She was the recipient of the prestigious Margaret Stonewall Wooldrife Hamblet Award and has had solo exhibits at the Vanderbilt Fine Arts Gallery (*Somewhere In Between*) and the Cumberland Gallery (*Celestial Comforts*). Lu is currently represented by Cumberland Gallery in Nashville, TN.

For further information check our SC Institutional Gallery listings, call the Cultural Arts Department at 843/740-5854 or visit (www.northcharleston.org).

Avery Research Center for African-American History & Culture in Charleston, SC, Features Annual MOJA Arts Festival Juried Show

The Avery Research Center for African-American History and Culture at the College of Charleston in Charleston, SC, is presenting the exhibit, *29th Annual MOJA Juried Art Exhibition*, on view through Oct. 30, 2012.

Featuring regional artists, this annual

juried art exhibition gives cash awards for first, second, third places, and three ribbons for honorable mentions. Artists selected to participate in this year's exhibition are Shelley Bonner, Eugene W.R. Campbell, Jr., John G. Croom, Amiri G. Farris, Antwon

continued on Page 31